



Santa Barbara County **REDISTRICTING**

DrawSantaBarbaraCounty.org

Traducción al Español Disponible

[Spanish Translation Available]

Meeting is being recorded

Welcome

Today's Schedule:

Start: 6:15

End: 8:15

Upcoming Meetings

Wednesday

August 4, 2021

6:00 p.m. to 8:00 p.m.

Betteravia Hearing Room
511 East Lakeside Parkway
Santa Maria, CA

Thursday

August 12, 2021

Noon to 2:00 p.m.

Solvang City Council Chambers
1644 Oak St.
Solvang, CA

Today's Goal:

You learn from the experts

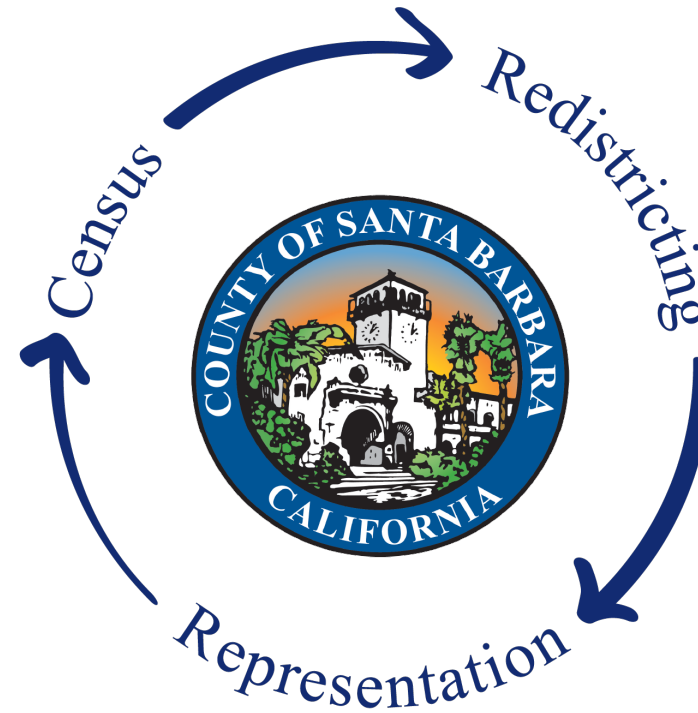
Experts listen to *You*

Mapping Tools Training

You leave empowered to give effective
feedback

What is redistricting?

- **Every 10 years** Census data are used to redraw election district lines.
- The new election lines determine which community members are placed in each supervisorial district, and voters within each district will elect one of their own as County Supervisor.



Why should I get involved?

Sharing your unique point of view will help ensure that our diverse communities are fairly represented.



What does redistricting look like?

- Community input via public hearings, workshops and public mapping tools
- Analysis of most recent census and other data
- Public review of all maps

Who draws the lines?

All residents of Santa Barbara County are encouraged to submit draft maps throughout the County's Redistricting process.

Who approves the lines?

In 2018, Santa Barbara County voters approved Measure G, creating the “Citizens Independent Redistricting Commission” (CIRC).

- *Requires an independent, transparent and nonpartisan process that creates the opportunity for everyone to be heard.*

The Santa Barbara County Citizens Independent Redistricting Commission



1st District Commissioner
Cheryl Trosky



1st District Commissioner
Karen Twibell



2nd District Commissioner
William McClintock



2nd District Commissioner
Megan Turley
(Vice Chair)



3rd District Commissioner
Norman Douglas
(Doug) Bradley



3rd District Commissioner
Kevin Kaseff



4th District Commissioner
Amanda Ochoa



4th District Commissioner
James H. Bray (Jim)

5th District Commissioner
(Vacant)



5th District Commissioner
Glenn Morris
(Chair)



At-Large Commissioner
Kathryn Adams

Engaging Residents

- Extensive public outreach
 - Online, traditional media, and face-to-face
- Seven hearings before drawing maps
- Residents define local communities of interest
- Residents draw initial draft maps
- Seven hearings to gather feedback on draft maps
- Deadline for final district map: December 15, 2021

Rules For Drawing the Lines

In accordance with federal, state, county law, the Commission must draw lines pursuant to the following criteria, which are listed in order of priority:

1. Federal Laws

- US Constitution – reasonable equal population and no racial gerrymandering
- Federal Voting Rights Act

2. State Law and Measure G Requirements

1. California Voting Rights Act
2. Geographical-contiguity
3. Undivided neighborhoods and “communities of interest”
4. Undivided cities and Census designated place
5. Easily identifiable boundaries
6. Compact
7. Topography, geography, and cohesiveness

3. Other Traditional Redistricting Principles

- Future population growth
- Minimize voters shifted to different election years

In addition, the Commission is prohibited from considering the residence of any incumbent or political candidate and districts shall not be drawn for purposes of favoring or discriminating against an incumbent, political candidate, or political party.

Demographic Summary of Existing Districts

<i>Santa Barbara County - Current Districts</i>							
District		1	2	3	4	5	Total
2020	2020 Est. Total Pop	84,425	86,819	95,166	90,348	89,744	446,503
	Deviation from ideal	-4,875	-2,481	5,865	1,047	444	10,741
	% Deviation	-5.46%	-2.78%	6.57%	1.17%	0.50%	12.03%
Citizen Voting Age Pop	Total	58,143	63,675	65,209	54,905	39,712	281,644
	% Hisp	24%	20%	25%	34%	58%	30%
	% NH White	69%	71%	59%	56%	32%	59%
	% NH Black	2%	2%	4%	3%	2%	3%
	% Asian/Pac.Isl.	4%	5%	9%	5%	7%	6%

Estimates using official 2020 demographic data and NDC's estimated total population figures.
Each of the five districts must contain about 89,300 people.

Communities of Interest (COI)

“A contiguous population that shares common social and economic interests that should be included within a single district for purposes of its effective and fair representation.”



Define Your Community

- How do you define your neighborhood or community?
 - *Around a park or a school, between major roads, or some other definition?*
- What are the community's geographic borders?
- What shared issues, concerns and/or demographics tie the community together?
 - *How is this community impacted by County policy decisions?*

Tell your community's story.

How you can participate



DESCRIBE
your community



DRAW
your community
on a map



PROVIDE
your input directly
to the commission

Provide your input today at: DrawSantaBarbaraCounty.org

Want to learn more?

- Visit our website:
DrawSantaBarbaraCounty.org
- Participate in one or more public meetings
 - See website for meeting schedule
- Forward contact information for community groups we should contact and urge them to contact us.
- Or email us at:
redistricting@countyofsb.org



Who else should we contact?

DrawSantaBarbaraCounty.org

Review the list of groups we are contacting.

- Provide the names and contact information of any additional community-based organizations we should contact.

A screenshot of a public outreach form from the County of Santa Barbara Citizens Independent Redistricting Commission. The header features a collage of local scenes and the commission's name. The main title is "Public Outreach to Community Organizations". The text explains that community-based organizations are invited to use the form to request public outreach materials. A "PLEASE NOTE" section states that all information submitted will be made available to the public and that personal information should not be submitted. A final note directs individuals and organizations interested in helping with outreach to sign up for a redistricting outreach email list using a "Click to Subscribe" link at the top of the commission's website, with the URL <https://drawsantabarbaracounty.org/> provided.

County of Santa Barbara
**Citizens Independent
Redistricting Commission**

Public Outreach to Community Organizations

Community-based organizations are invited to use this form to request public outreach materials from the County of Santa Barbara Citizens Independent Redistricting Commission.

PLEASE NOTE: All information submitted through this form will be made available to the public. Do NOT submit personal information.

Individuals and organizations personally interested in helping with outreach should NOT list their information here. Instead, please sign up for the redistricting outreach email list using the "Click to Subscribe" link at the top of the Commission website: <https://drawsantabarbaracounty.org/>

Question and Answer Time

Ask your questions of the experts about redistricting.

Neighbor Chat

- *15 Minutes*
- *Talk about communities of interest with your peers.*
- *Share ideas on where communities of interest exist.*
- *Review the paper maps and collaborate on ideas.*

Five Minute Break

Mapping Tools



DrawSantaBarbaraCounty.org

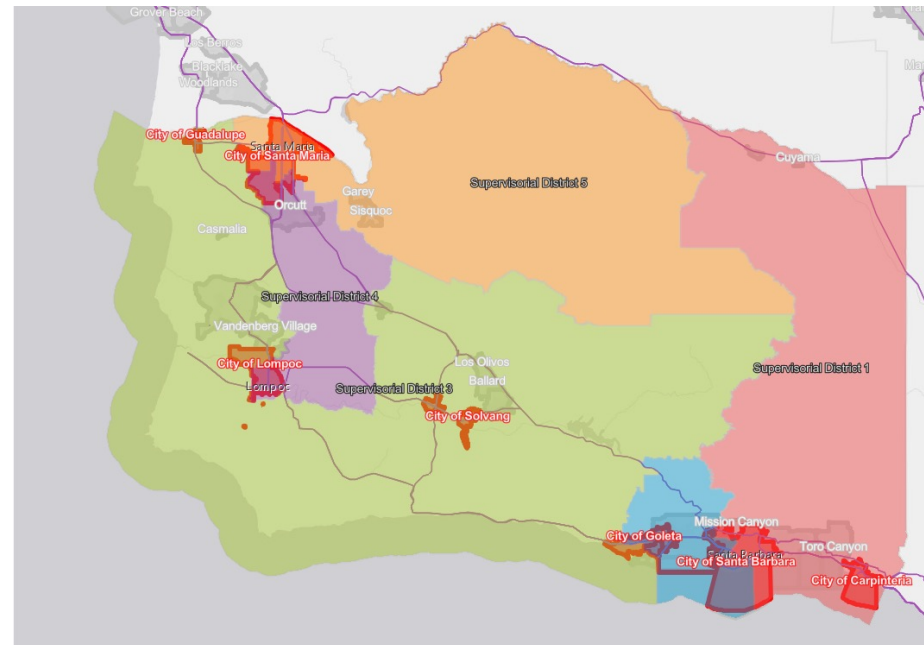
[Draw A Map](https://DrawSantaBarbaraCounty.org)

Story Map

- Easy to use “story” of demographic and other data
 - Similar to PowerPoint, but interactive
 - Used to identify “communities of interest”
 - [Santa Barbara County Story Map](#)

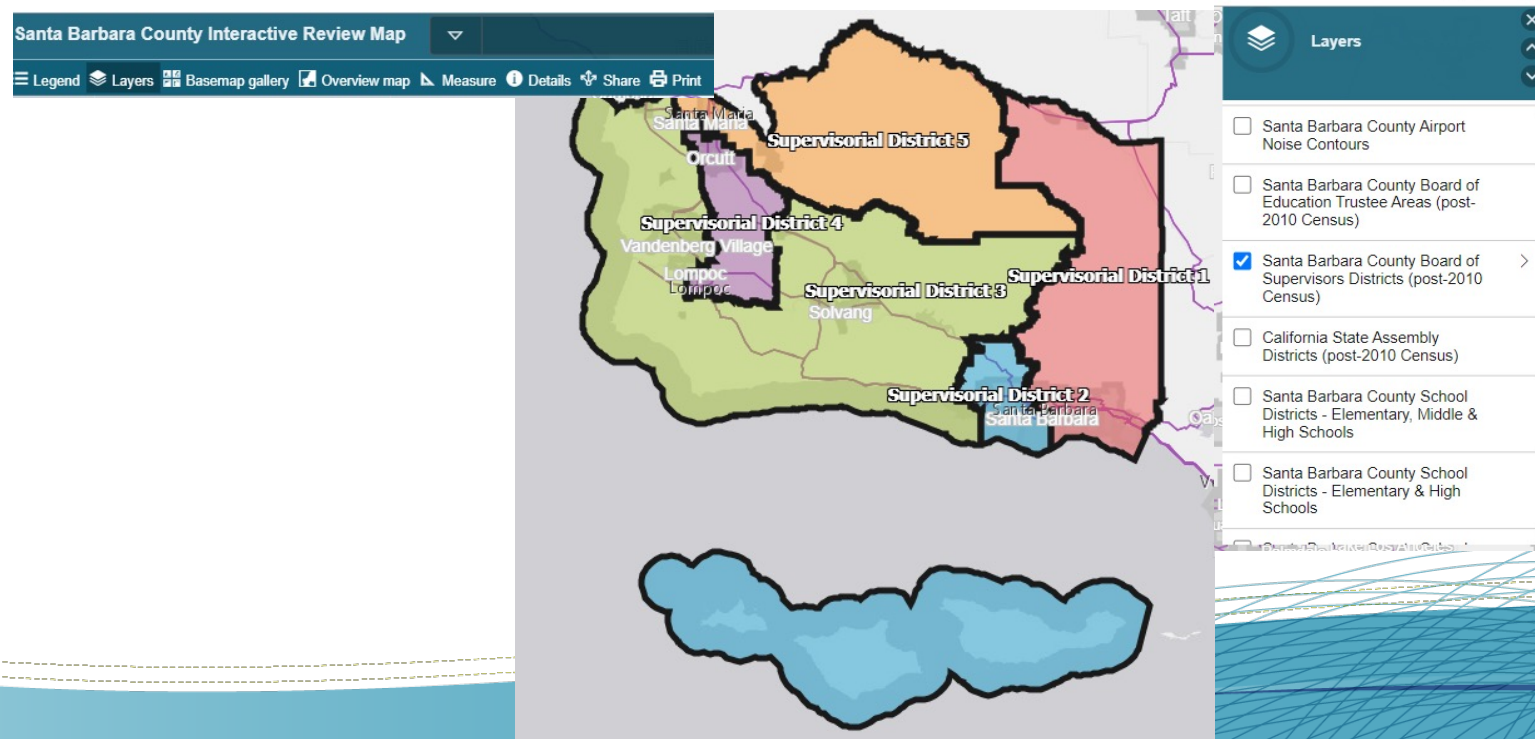
County Board of Supervisors Districts

The county is divided into **five** supervisorial districts

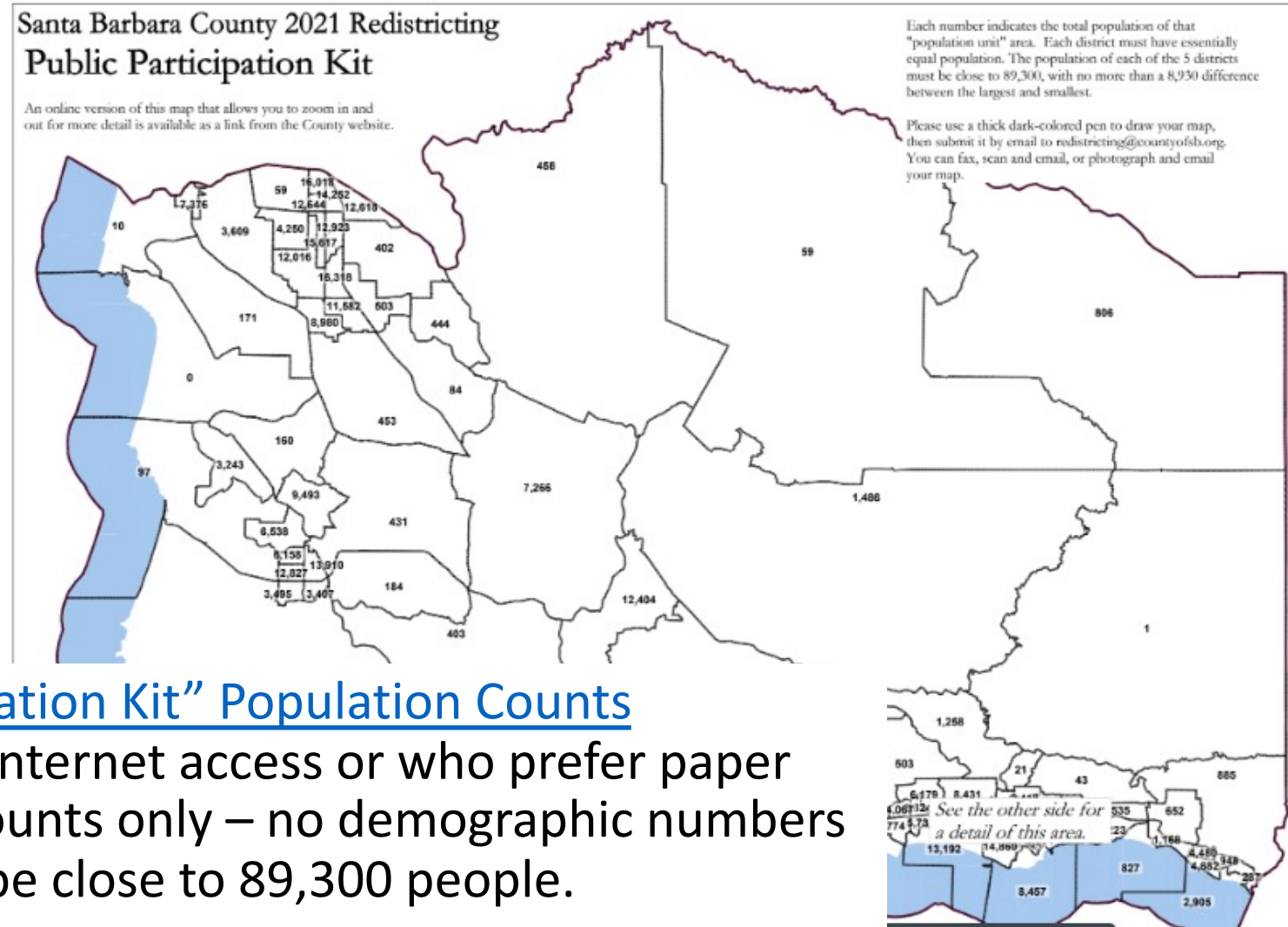


Simple Map Review Tool

- Online Interactive Review Map
 - ESRI's "ArcGIS Online" – similar to Google Maps in ease of use
 - Used to review, analyze and compare maps, not to create them
 - Includes overlays of "community of interest" and other Story Map data



Simple Map Drawing Tool



Paper “Public Participation Kit” Population Counts

- For those without internet access or who prefer paper
- Total Population Counts only – no demographic numbers
- Each district must be close to 89,300 people.

Simple Map Drawing Tool + Excel Supplement



Santa Barbara County 2021 Redistricting Population Unit ID Numbers

An online version of this map that allows you to zoom in and out for more detail is available as a link from the County website.

Use this map with the Microsoft Excel kit supplement.

Please use a thick dark-colored pen to draw your map, then submit it by email to redistricting@countyofsb.org. You can fax, scan and email, or photograph and email your map.

Paper “Public Participation Kit” Population Unit IDs

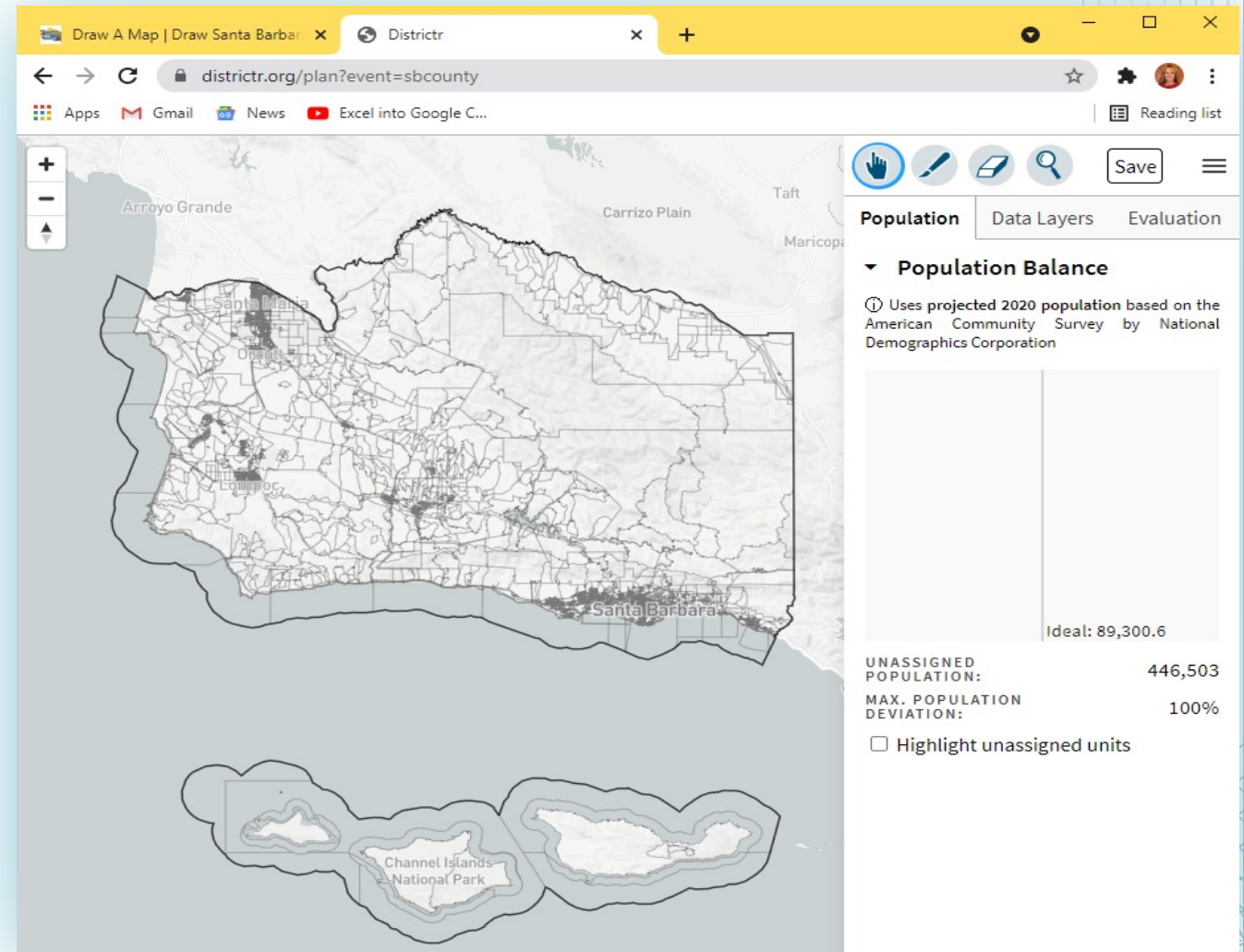
- For those who know Excel and do not want to use online tools
- Adds Total Population and CVAP data
- [Excel](#) does the math; each district must be close to 89,300 people.

			Quick Reference: Total Population & Deviation from Ideal by district												
D1:	89,801	501	D2:	0	-89,300	D3:	0	-89,300	D4:	0	-89,300	D5:	0	-89,300	
District (1-5)	Pop	Total	Citizen Voting Age Population					Nov. 2020 Registration				Nov. 2020 Voters			
	Unit	Est.	NH					Nov. 2020 Registration				Nov. 2020 Voters			
	Pop.	Pop.	tot	Hisp	Wht	NH Blk	Asn	tot	latino	asn	other	tot	latino	asn	other
1	1	806	487	119	333	3	7	403	155	0	248	323	102	0	221
1	2	1	1	0	1	0	0	0	0	0	0	0	0	0	0
1	3	885	679	152	514	0	6	708	114	19	575	646			

		Counts										
Group	Category	1	2	3	4	5	Unassigned	Total	1			
Total Est. 2020 Population	Tot. Pop.	89,801	0	0	0	0	359,138	448,939				
	Deviation from Ideal	501	-89,300	-89,300	-89,300	-89,300		89,801	0.56%			
Citizen Voting Age Population	Total CVAP	62,167	0	0	0	0	221,078	283,244				
	Hisp	14,829	0	0	0	0	70,618	85,448	24%			
	NH Wht	42,935	0	0	0	0	125,355	168,291	69%			
	NH Blk	1,312	0	0	0	0	6,335	7,647	2%			
	NH Asn	2,512	0	0	0	0	14,835	17,348	4%			

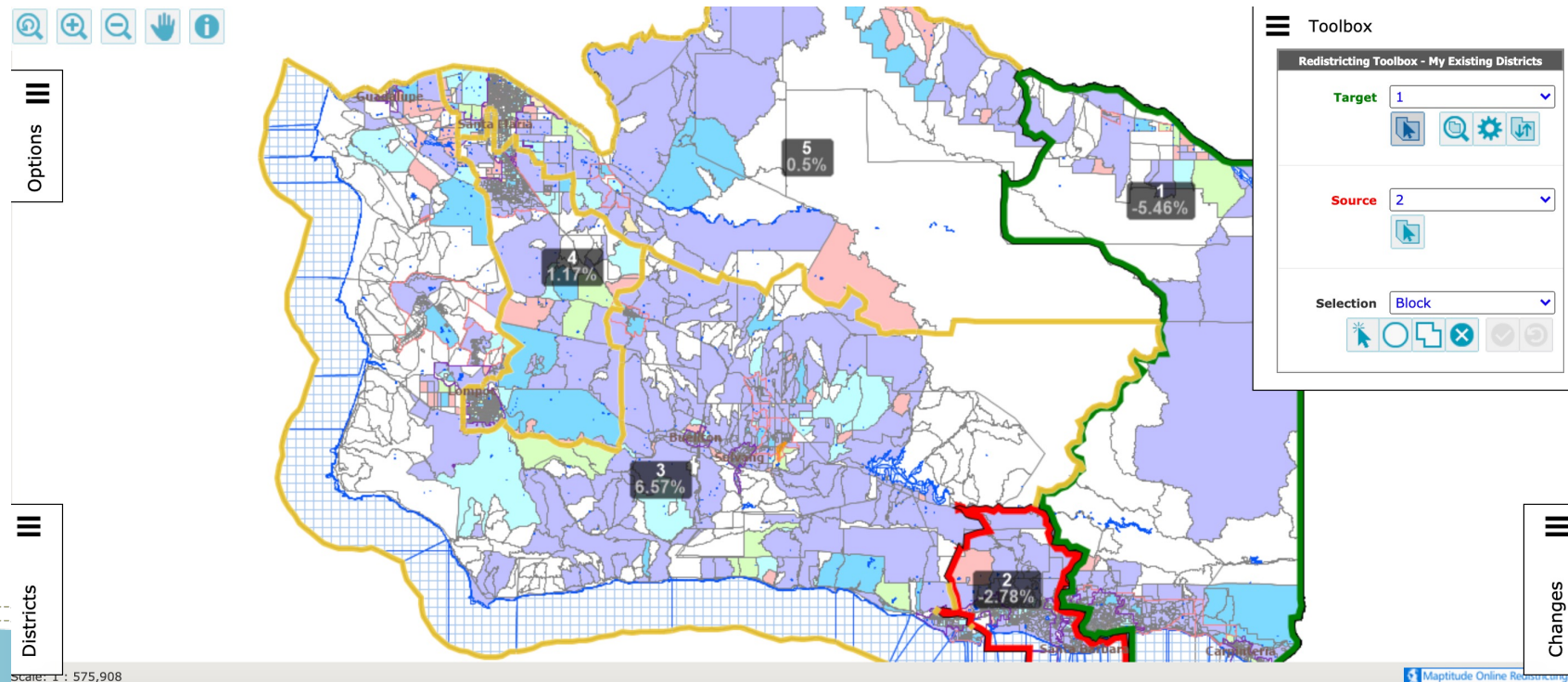
DistrictR

- “Draw Your Community of Interest” focus
 - [DistrictR](#)
 - Also includes simple district-mapping tool
 - Only available in English
 - Similar external options: [Representable.org](#), [DrawMyCACommunity.org](#)



Caliper's “Maptitude Online Redistricting”

- Full Database, Powerful Online Mapping Tool
- Six language options: English, Spanish, Portuguese, Vietnamese, Mandarin and Korean
- [Caliper MOR](#) [Quick Start Guide](#)



Upcoming Meetings

Wednesday
August 4, 2021
6:00 p.m. to 8:00 p.m.

Betteravia Hearing Room
511 East Lakeside Parkway
Santa Maria, CA

Thursday
August 12, 2021
Noon to 2:00

Solvang City Council Chambers
1644 Oak St.
Solvang, CA

DrawSantaBarbaraCounty.org