



# Santa Barbara County **REDISTRICTING**

[DrawSantaBarbaraCounty.org](http://DrawSantaBarbaraCounty.org)

# Rules For Drawing the Lines

In accordance with federal, state, county law, the Commission must draw lines pursuant to the following criteria, which are listed in order of priority:

## 1. Federal Laws

- US Constitution – reasonable equal population and no racial gerrymandering
- Federal Voting Rights Act

## 2. State Law and Measure G Requirements

1. California Voting Rights Act
2. Geographical-contiguity
3. Undivided neighborhoods and “communities of interest”
4. Undivided cities and Census designated place
5. Easily identifiable boundaries
6. Compact
7. Topography, geography, and cohesiveness

## 3. Other Traditional Redistricting Principles

- Future population growth
- Minimize voters shifted to different election years

In addition, the Commission is prohibited from considering the residence of any incumbent or political candidate and districts shall not be drawn for purposes of favoring or discriminating against an incumbent, political candidate, or political party.

# What do the Plan Numbers Mean?

100s: DistrictR Full Plans using estimated data (all five districts)

200s: DistrictR Partial Plans (fewer than five districts)

300s: DistrictR Communities of Interest

400s: Plans Derived from CSV Files (all are full plans)

500s: MOR Plans (all are full plans)

600s: Paper Participation Kit Plans (all are full plans)

700s: NDC Plans (all are full plans)

800s: DistrictR Full Plans using official data (all are full plans)

# How Many Plans Were Submitted?

100s: 47 DistrictR Full Plans using estimated population data

200s: 1 DistrictR Partial Plan (two districts)

300s: 8 DistrictR Communities of Interest

400s: 9 CSV Files

500s: 3 MOR Plans

600s: 2 Paper Participation Kit Plans

700s: 5 NDC Plans

800s: 21 DistrictR Full plans using official population data (thru 11/10)

96 Submissions Total (thru 11/10) + Current Plan

# Was My Plan Included?

As long as you submitted your plan before the final deadline of noon today, your plan will be presented to the Commission over the next three meetings

If you submitted a plan *after* November 10th, it has not yet been processed and posted, but it will be in time for the Commission's third meeting

If you were using DistrictR, your plan will only be included if you selected "Share Now" to save it to the Public Gallery; if you selected "Work in Progress" to save it as a draft, it will not be considered

You can check to make sure that your plan was included by going to "View Draft Maps" on the website and opening the file "Santa Barbara County Draft Plans by Source ID"; then you can check to see if your DistrictR or MOR ID is listed there, and which plan number it was assigned

If you submitted a CSV file or paper map, go through the 400s and 600s to check if your map is there, or send an email seeking confirmation

# How Can I Check if the Plan I Submitted is Population Balanced?

Given that the mapping tools were only recently updated with the official population data, any plans submitted using the estimated population data may not be population balanced according to the official population data, even if they appeared to be so according to the estimated population data

If you submitted a CSV file or paper map, you can send an email seeking confirmation that it is indeed balanced

If you open “Santa Barbara County Draft Plans by Source ID”, you can check to see if the DistrictR or MOR plan you submitted is balanced

# A Note about District Numbering

An attempt was made to keep the numbering of the districts consistent across all the plans, with consistent coloring as well

This means that District 1 is always based in Downtown Santa Barbara, District 5 is always based in Downtown Santa Maria, and Districts 2, 3, and 4 proceed in a south to north fashion as one would travel up US 101 from Santa Barbara to Santa Maria

District 1 is pink

District 2 is blue

District 3 is green

District 4 is purple

District 5 is orange

# What Key Stats are Shown on the Map of Each Plan?



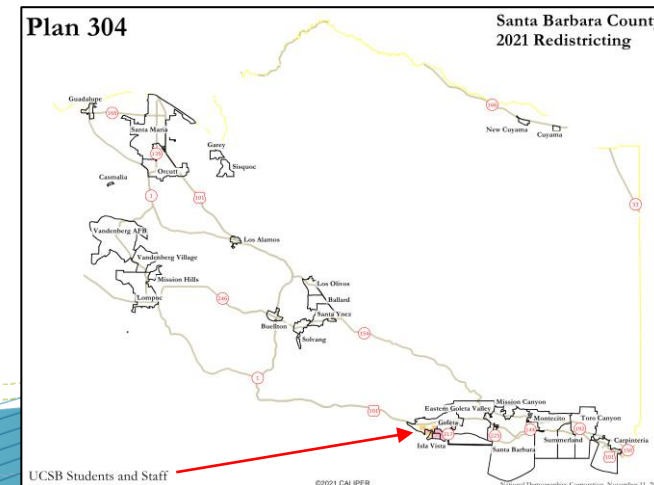
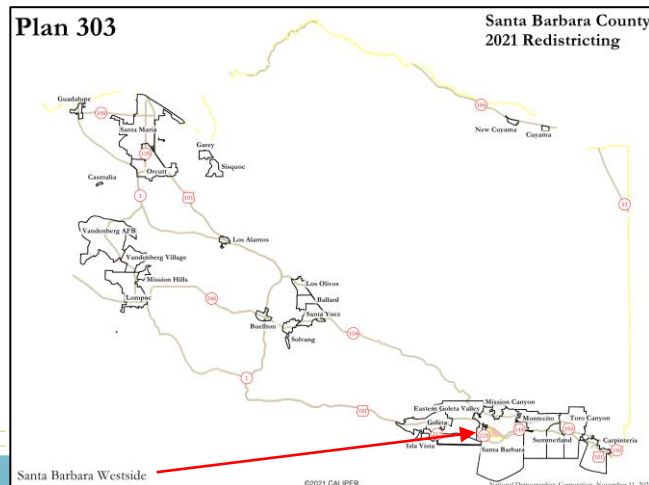
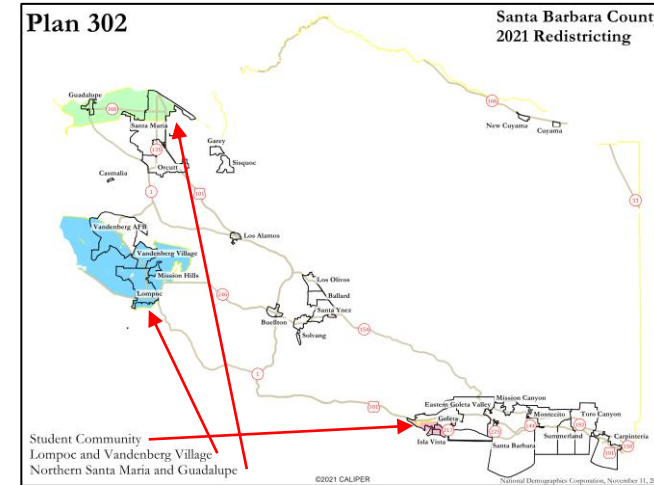
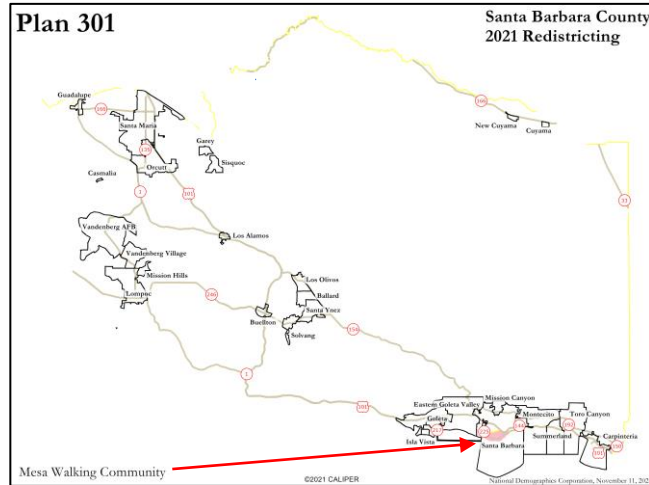
**Total Population Deviation:** The difference in population between the most populated district and the least populated district, divided by the ideal population of a district – should be less than 10%

**Maximum Latino CVAP:** The highest value among all districts for the proportion of the citizen voting age population that is Latino

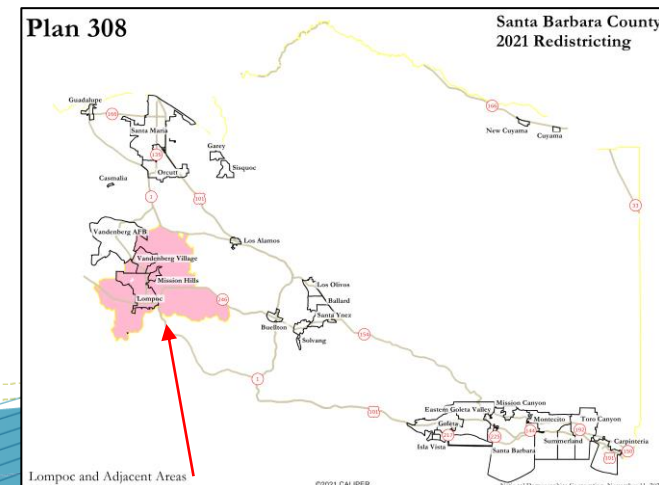
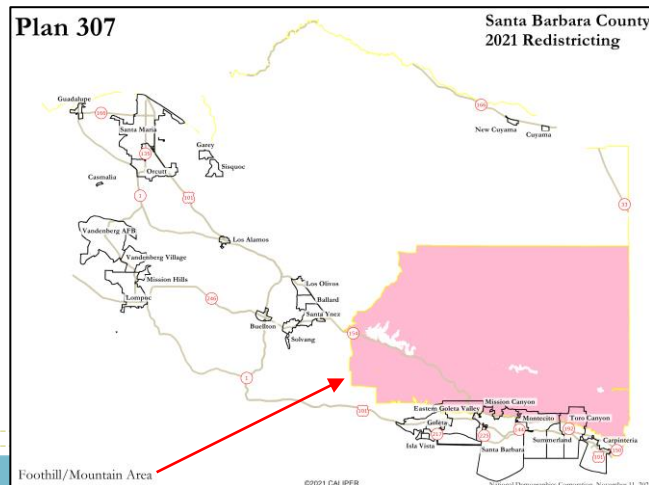
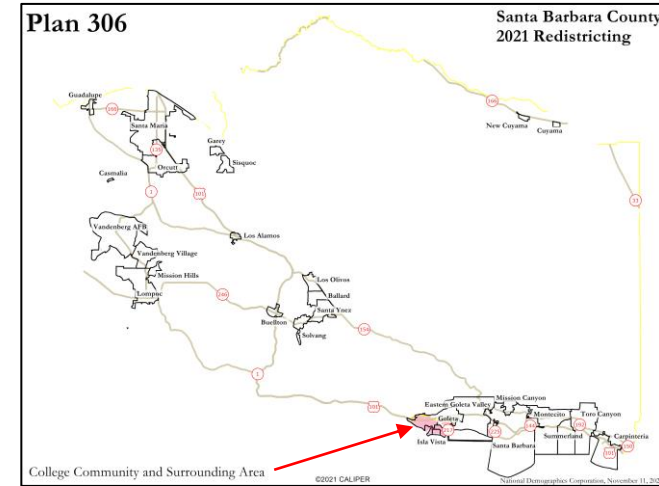
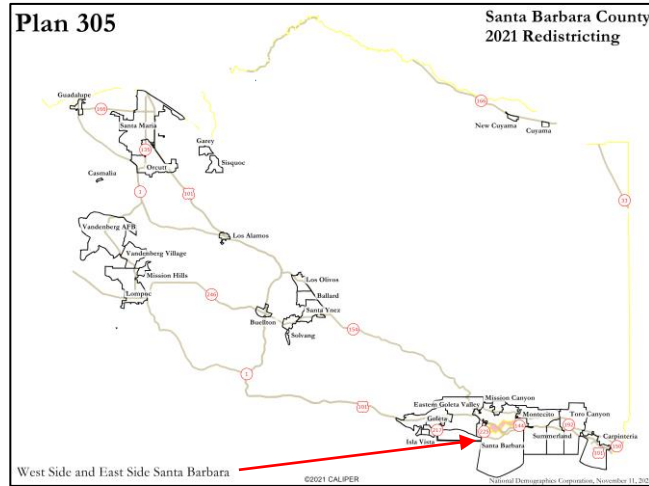
**Number of Split Places:** The number of Census places (either incorporated cities or unincorporated Census-designated places) that are split between multiple districts – the fewer the better

**More detailed stats are available in the full demographics table posted for each plan on the View Draft Maps page**

# Communities of Interest: 8 Submissions, 1 of Which Has Multiple

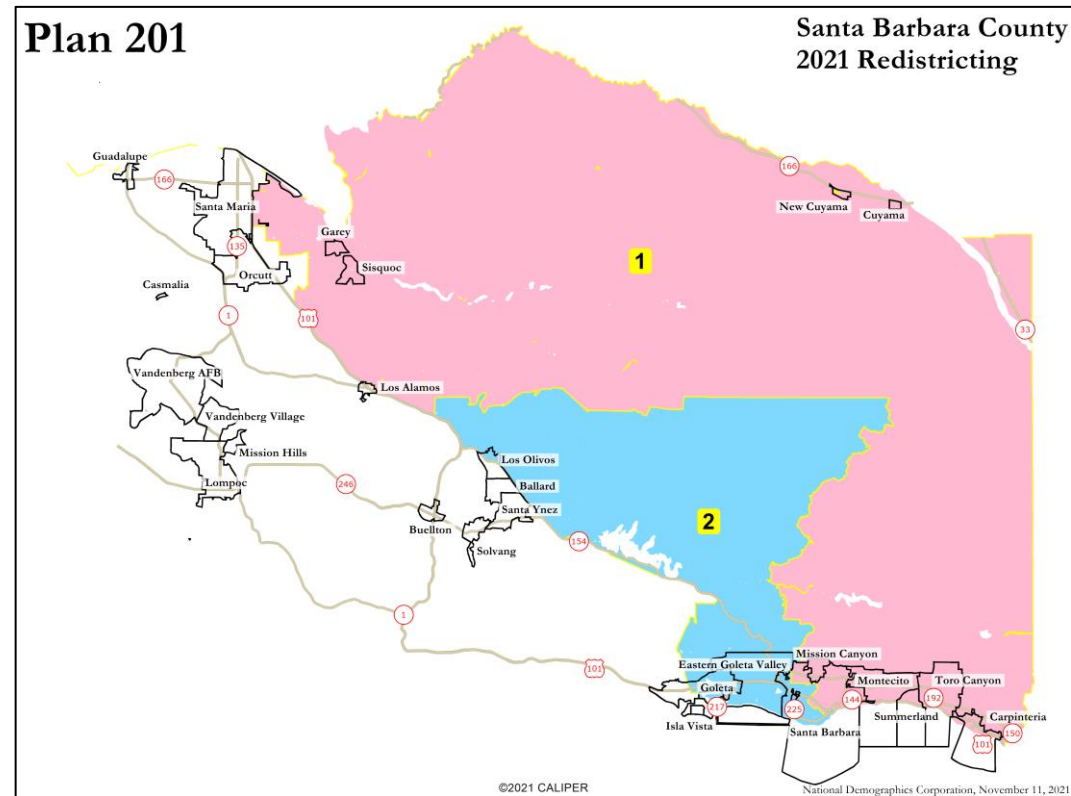


# Communities of Interest: 8 Submissions, 1 of Which Has Multiple

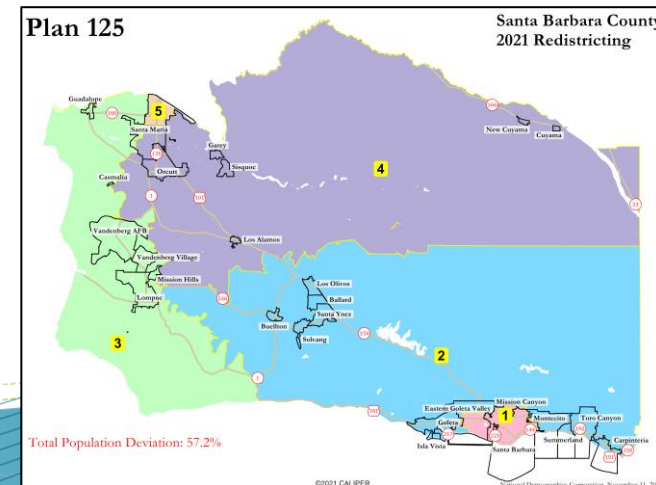
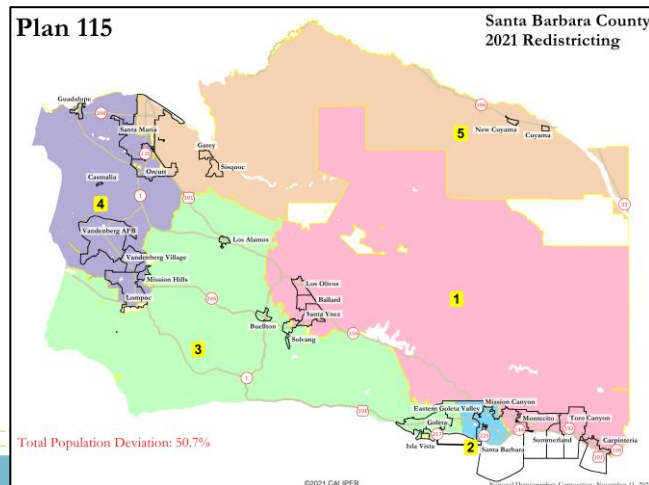
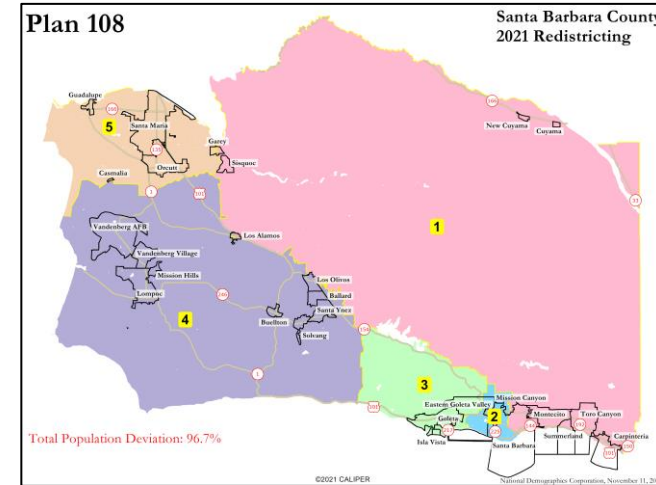
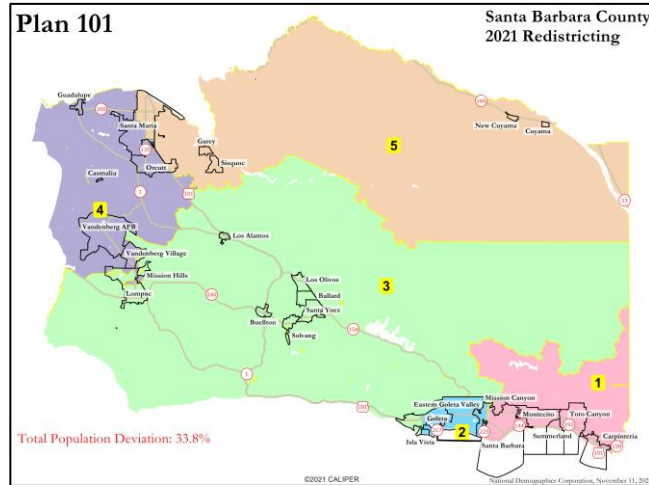


# Nonviable Plans:

## 1 Partial Plan



# Nonviable Plans: 4 Not Close to Population Balanced



# Viable Plans Grouped as so:

Guadalupe and Isla Vista seem to be the two hinge points, as they are currently the twin anchors of the Third District that cuts across the county

Draft plans are divided into six groups according to which part of the county each plan decides to join with Guadalupe:

- Group A (today): Join Guadalupe with Santa Maria (39 plans)
- Group B (today): Join Guadalupe with Santa Maria and Orcutt (4 plans)
- Group C (11/15): Join Guadalupe with Orcutt (24 plans)
- Group D (11/15): Join Guadalupe with Lompoc (8 plans)
- Group E (11/15): Join Guadalupe with Goleta (3 plans)
- Group F (11/15): Join Guadalupe with Isla Vista (6 plans)
- Considered on 11/18: Late arriving submissions

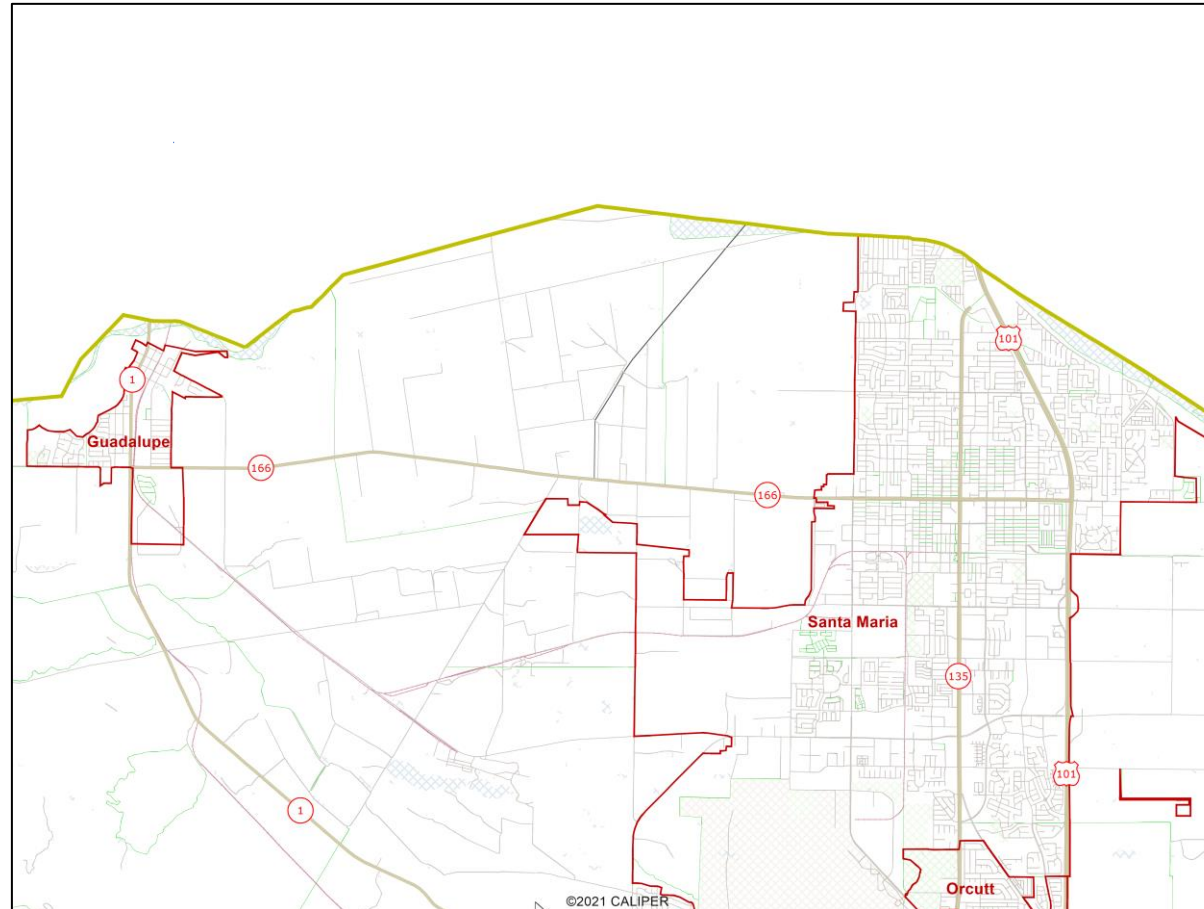
# Viable Plans Grouped as so:

Draft plans are further divided into six subgroups according to which part of the county each decides to join with Isla Vista

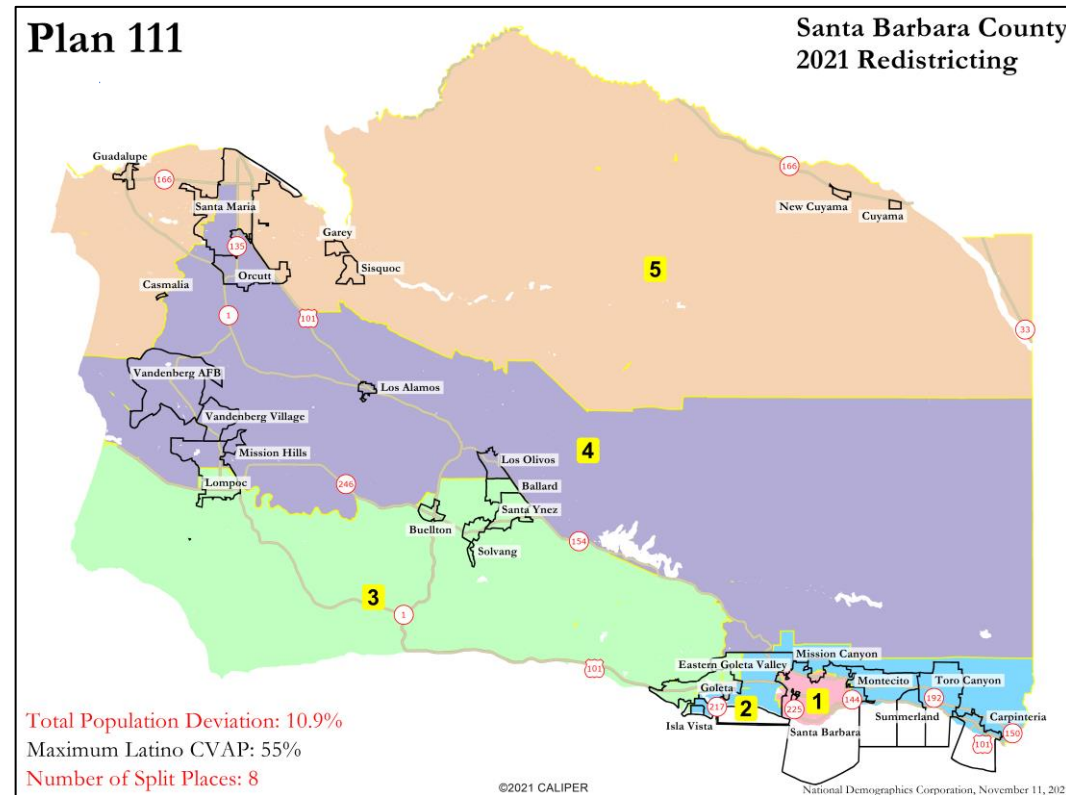
- Subgroup 1: Join Isla Vista with Carpinteria (6 plans total)
- Subgroup 2: Join Isla Vista with Santa Barbara (31 plans total)
- Subgroup 3: Join Isla Vista with Goleta (6 plans total)
- Subgroup 4: Join Isla Vista with Lompoc (30 plans total)
- Subgroup 5: Join Isla Vista with Guadalupe (6 plans total)
- Subgroup 6: Split Isla Vista Between Two Districts (5 plans total)

# Group A: Guadalupe + Santa Maria

## 39 Plans

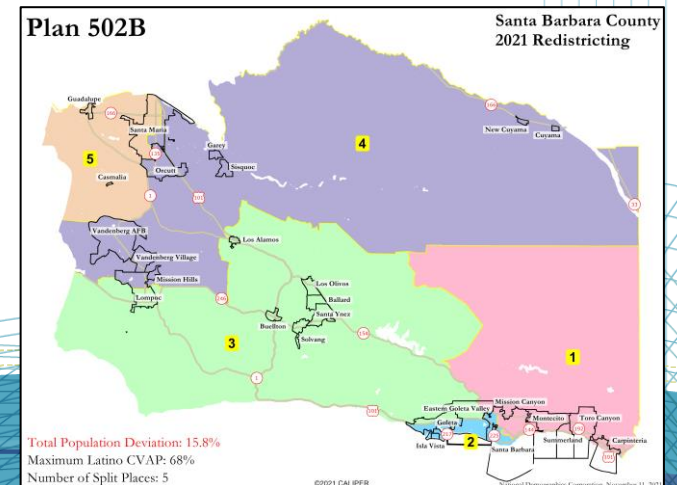
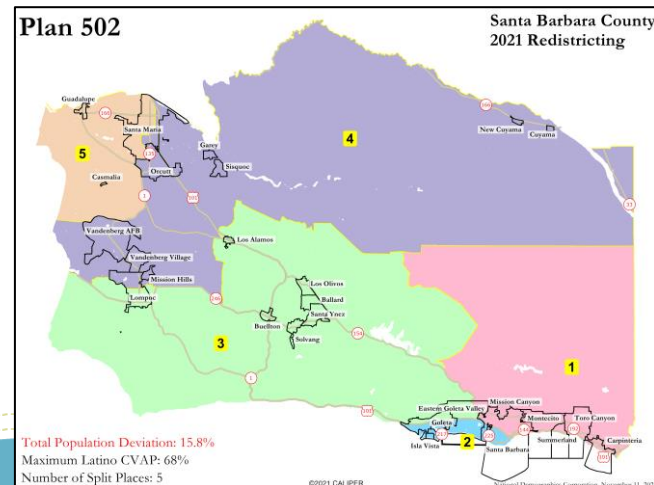
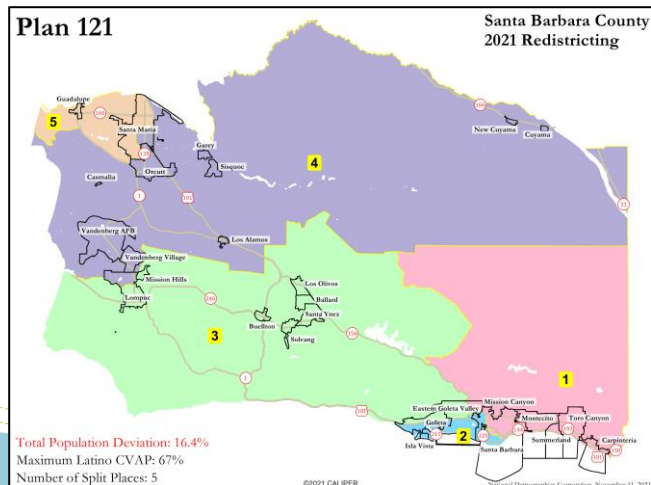
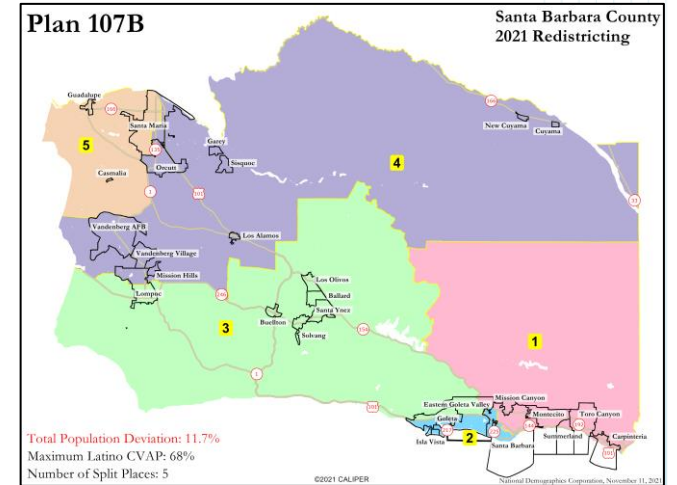
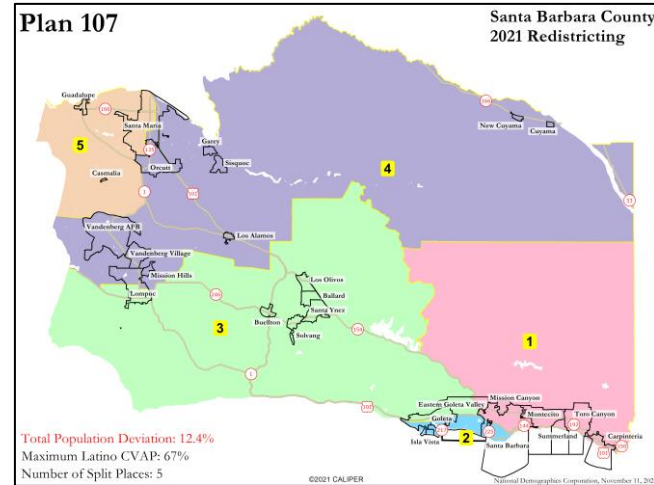
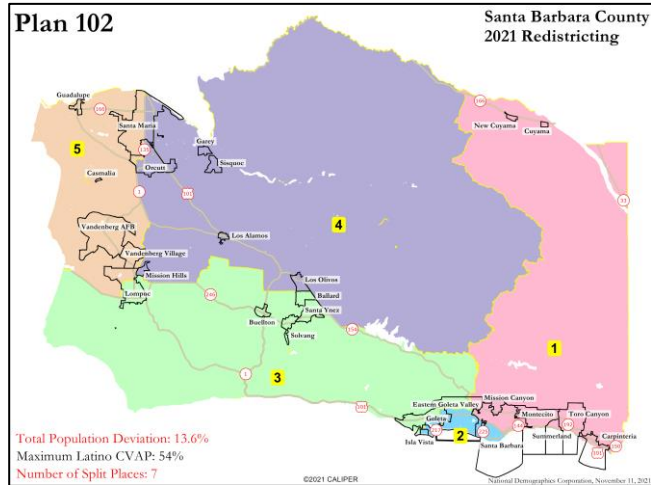


# Subgroup 1: Isla Vista + Carpinteria 1 Plan



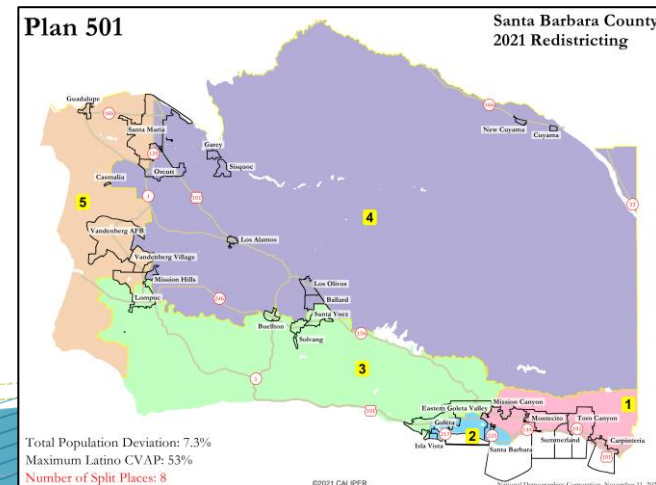
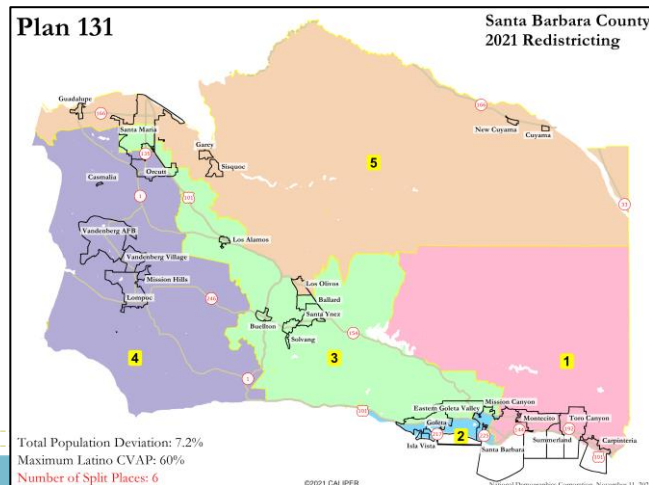
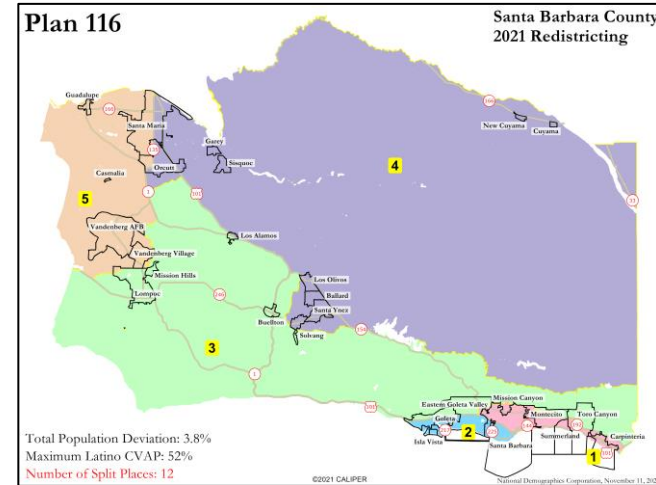
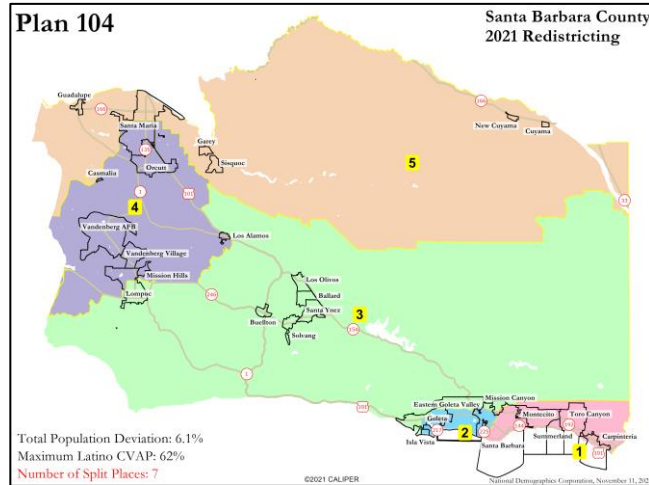
# Subgroup 2: Isla Vista + Santa Barbara

## 12 Plans, 6 of which are not population balanced



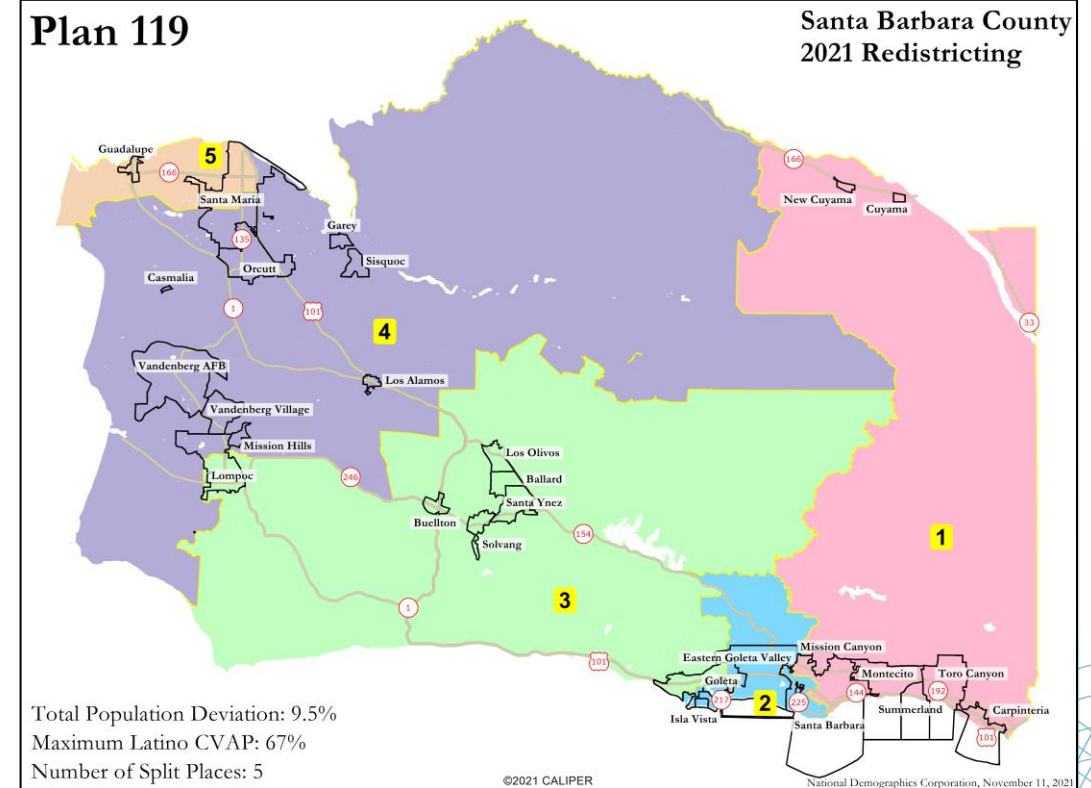
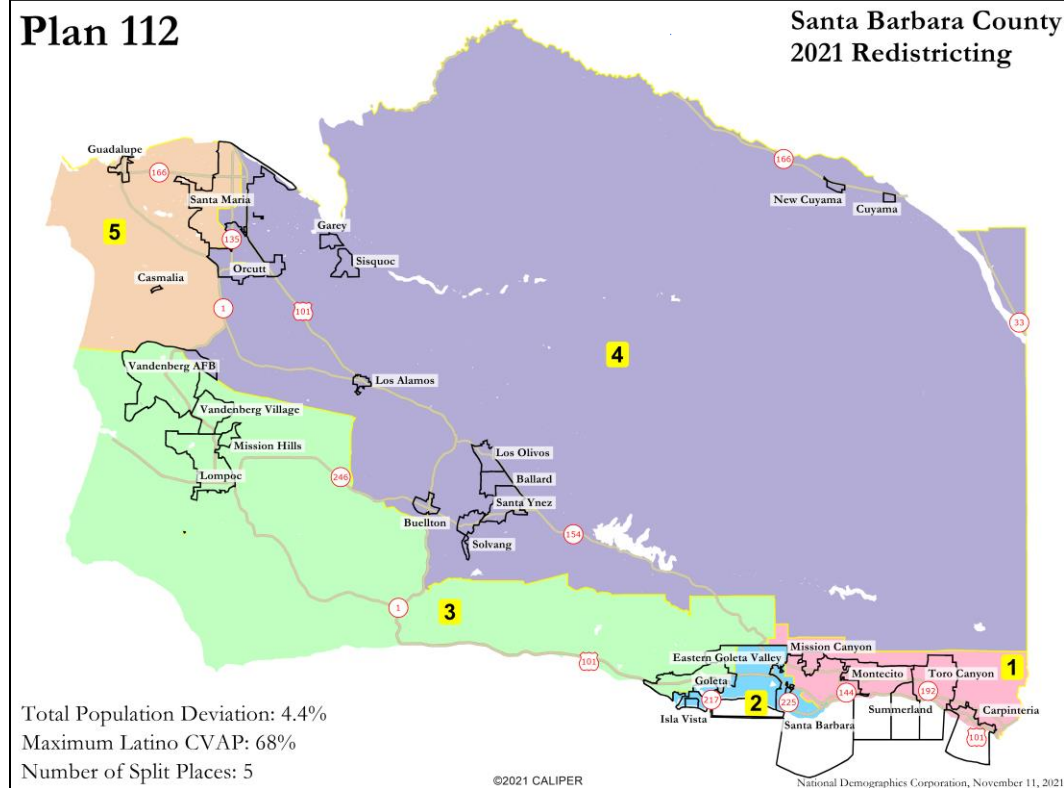
# Subgroup 2: Isla Vista + Santa Barbara

## 12 Plans, 4 of which split many places



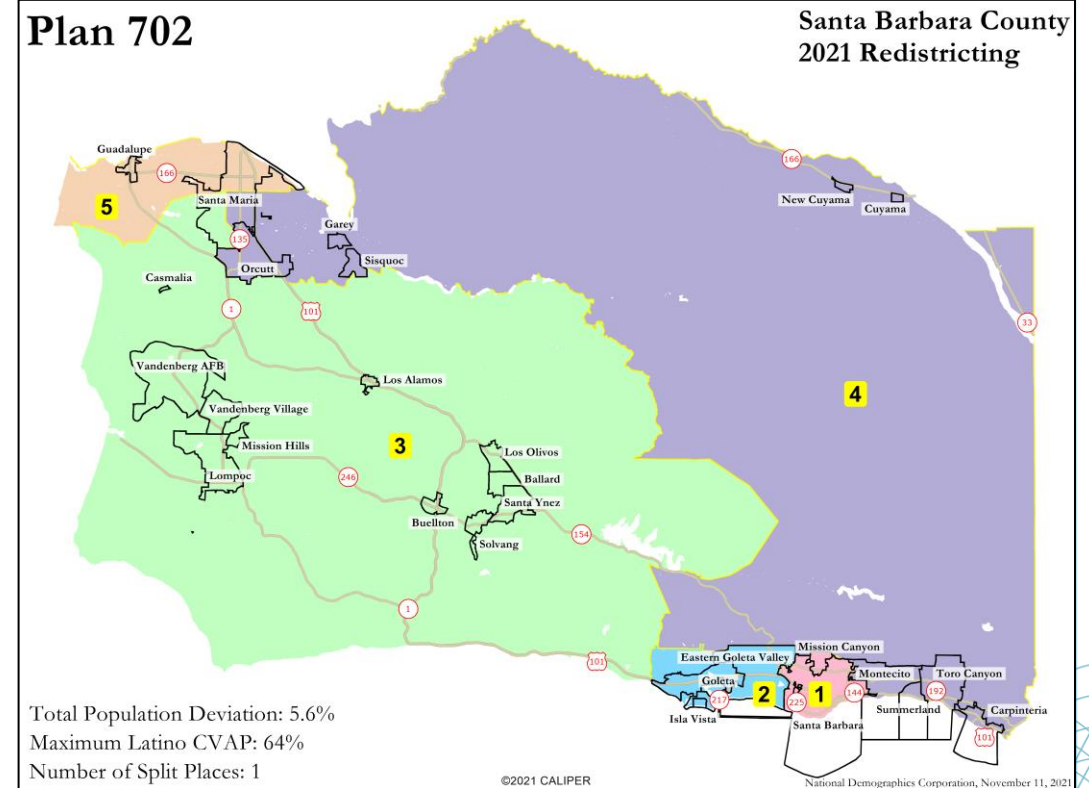
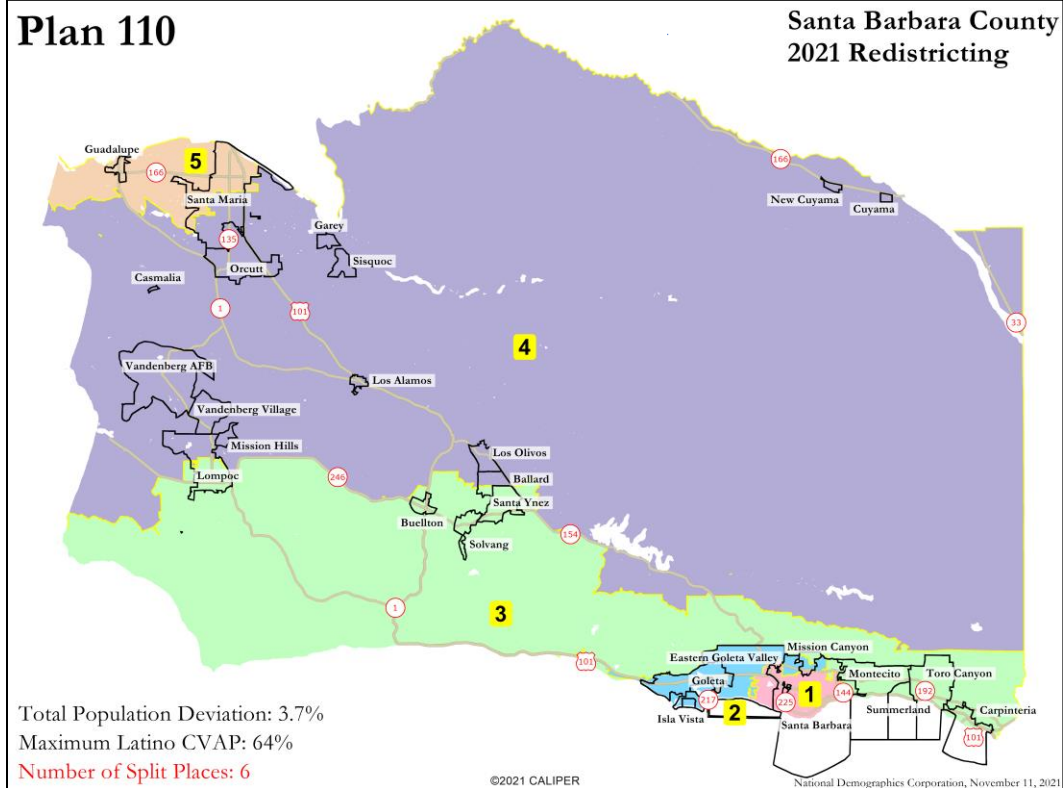
# Subgroup 2: Isla Vista + Santa Barbara

## 12 Plans, 2 of which remain



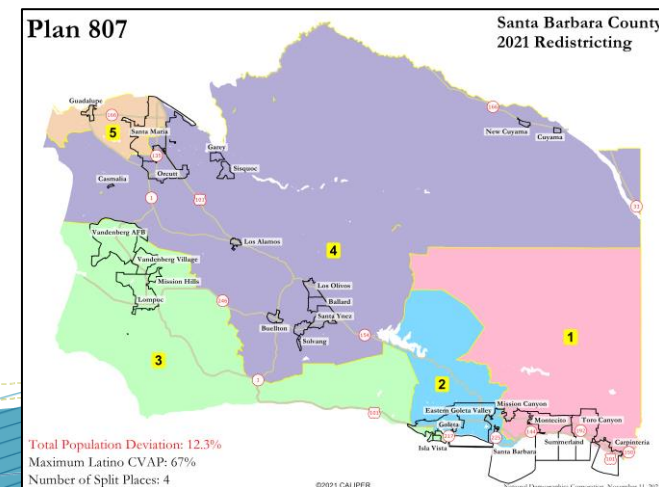
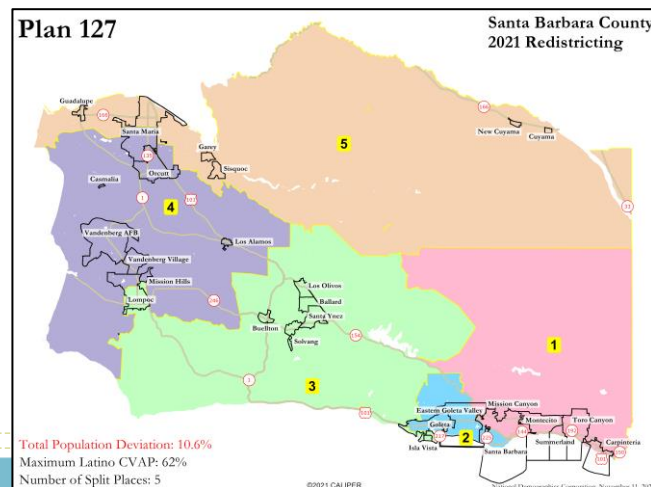
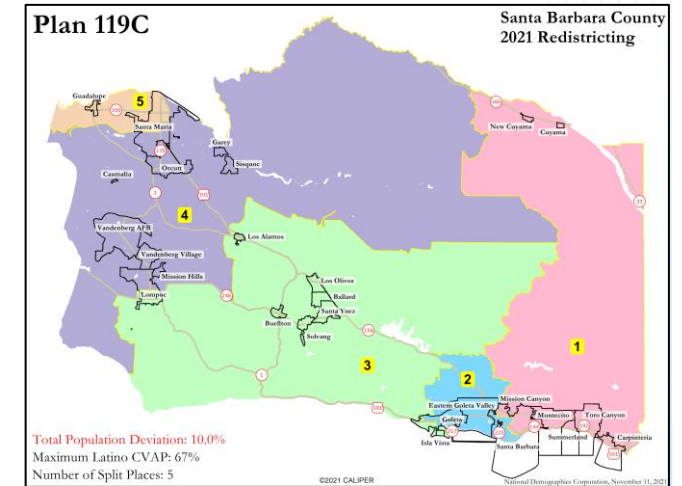
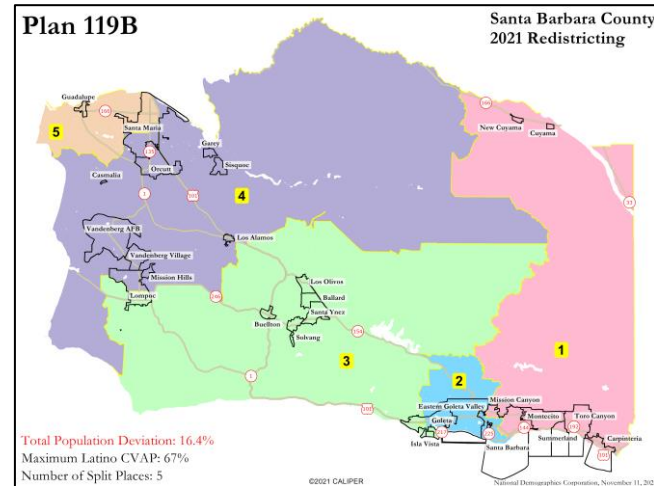
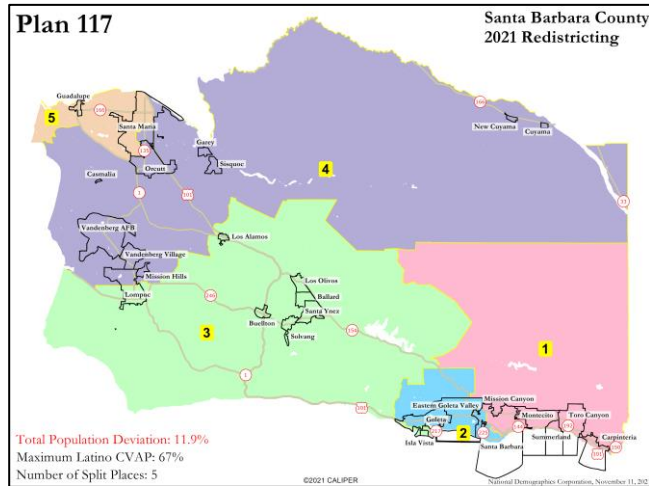
# Subgroup 3: Isla Vista + Goleta

## 2 Plans



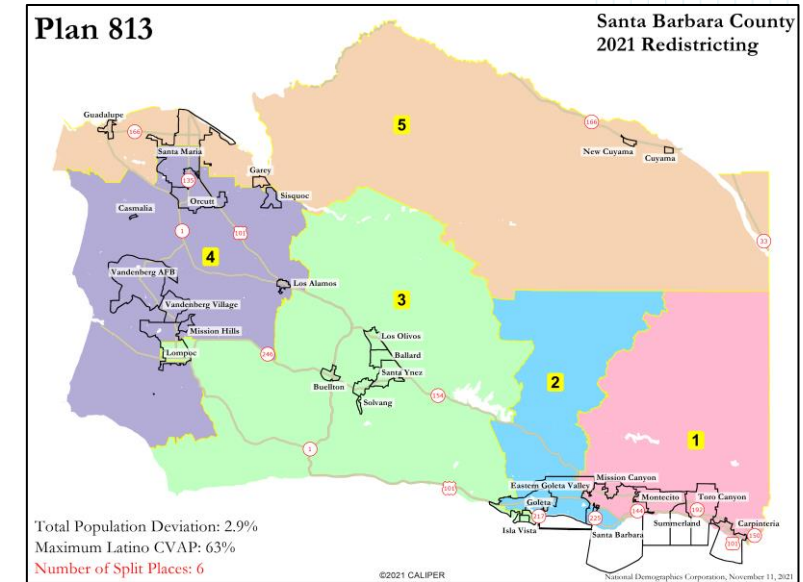
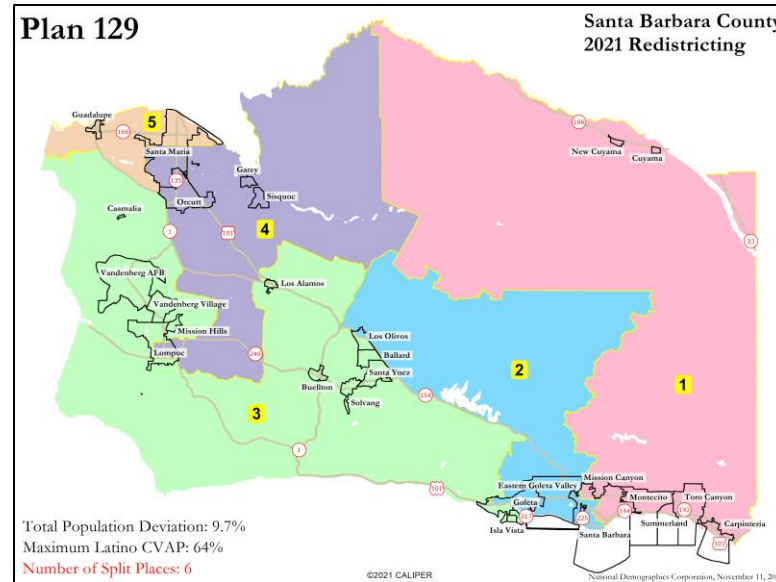
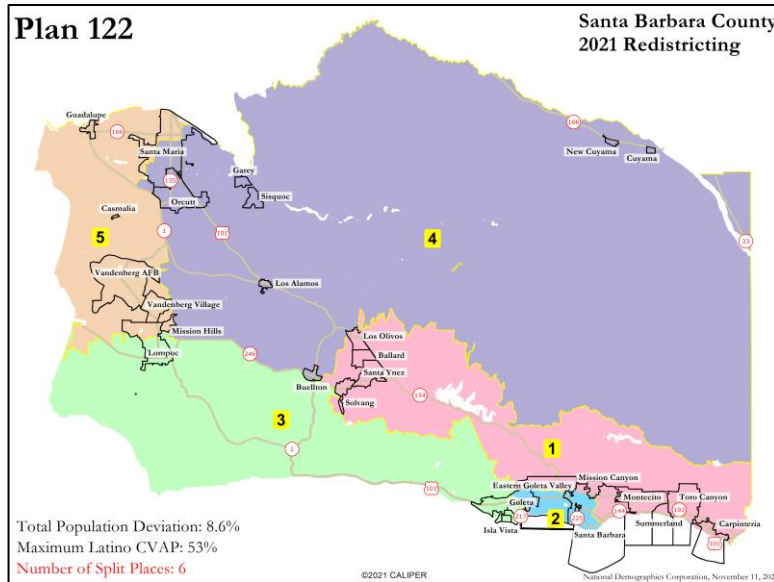
# Subgroup 4: Isla Vista + Lompoc

## 23 Plans, 5 of which are not population balanced



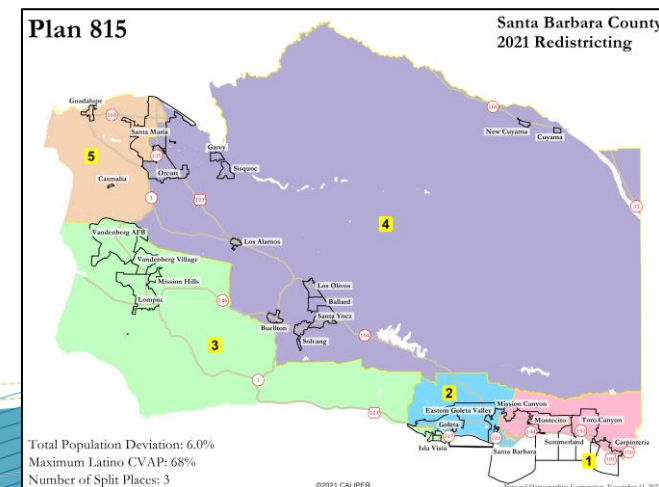
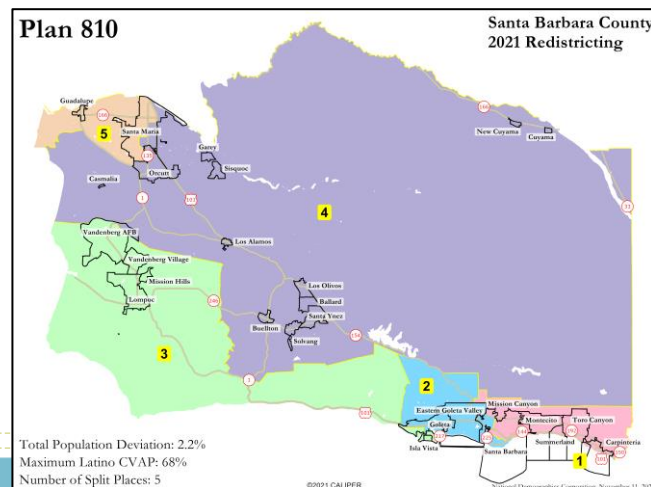
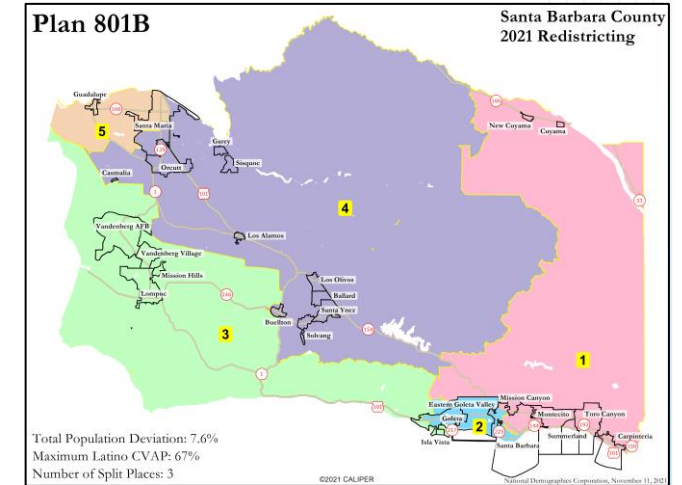
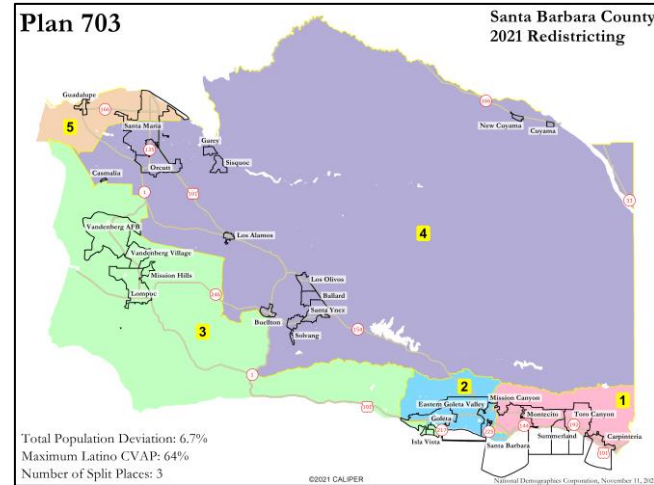
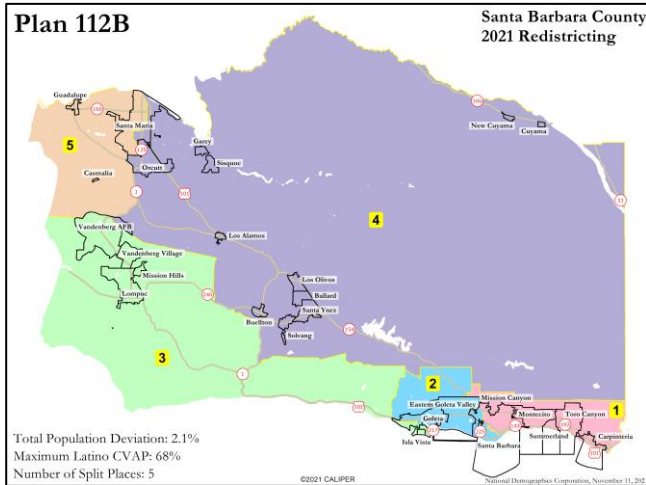
# Subgroup 4: Isla Vista + Lompoc

## 23 Plans, 3 of which split many places



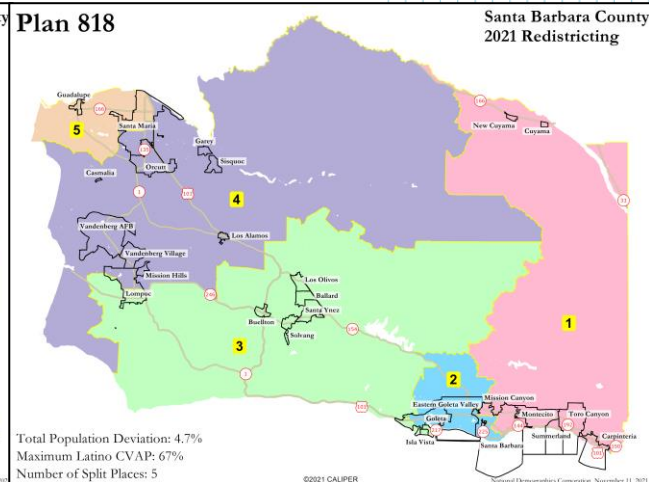
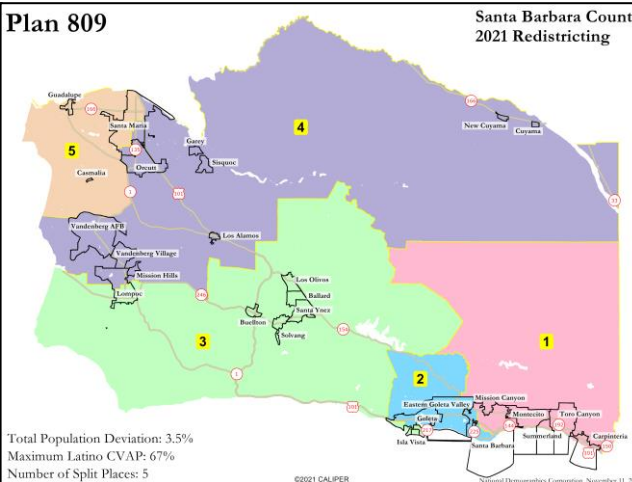
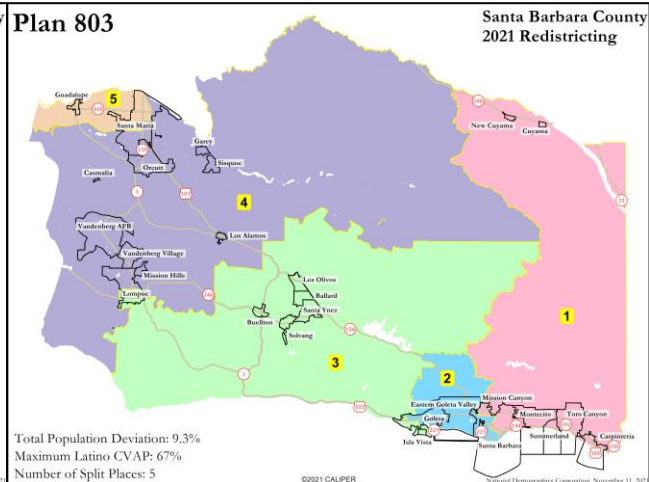
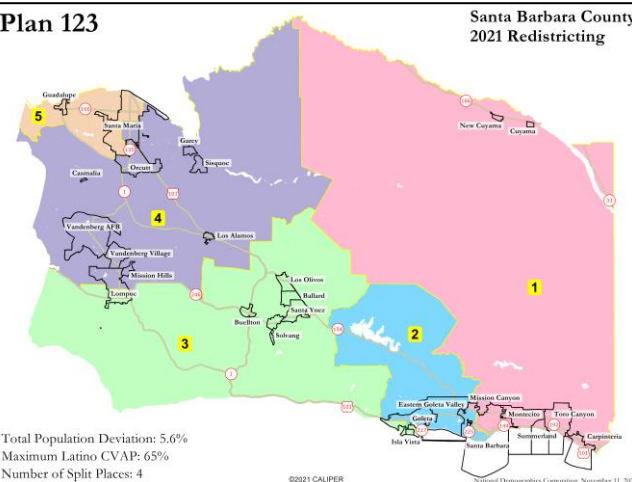
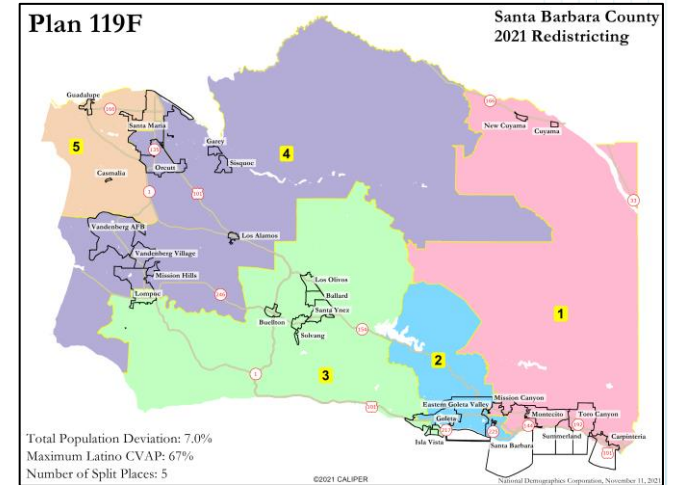
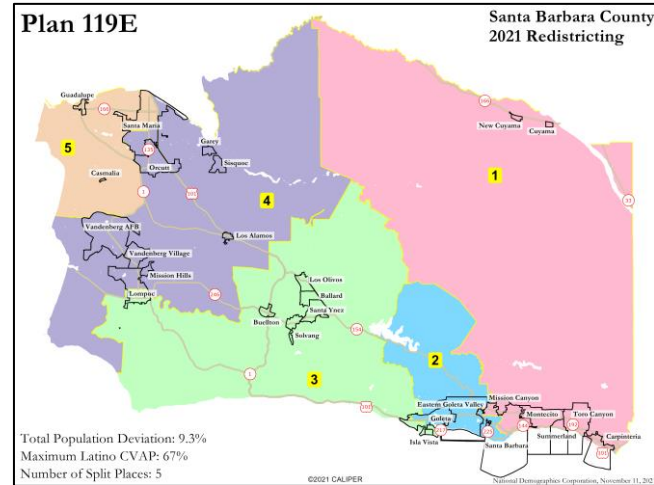
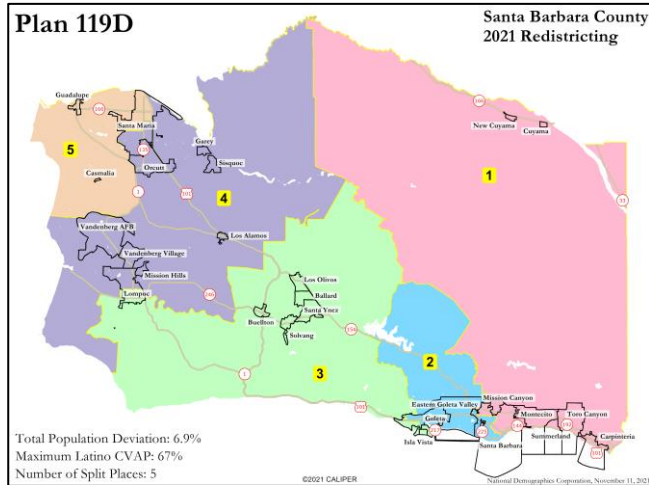
# Subgroup 4: Isla Vista + Lompoc

## 23 Plans, 5 of which include Vandenberg



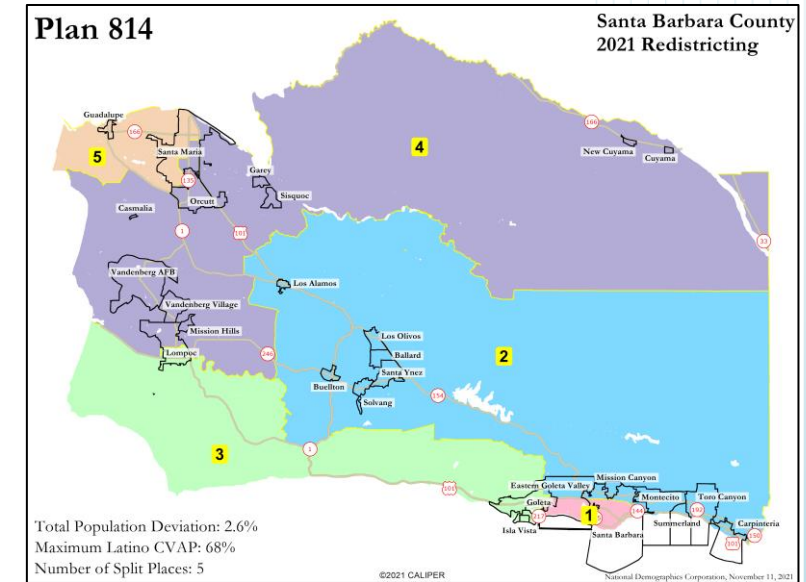
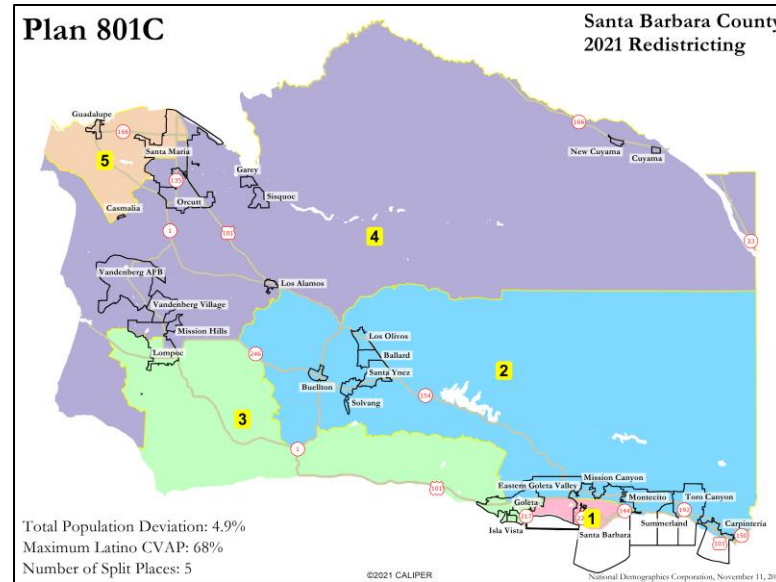
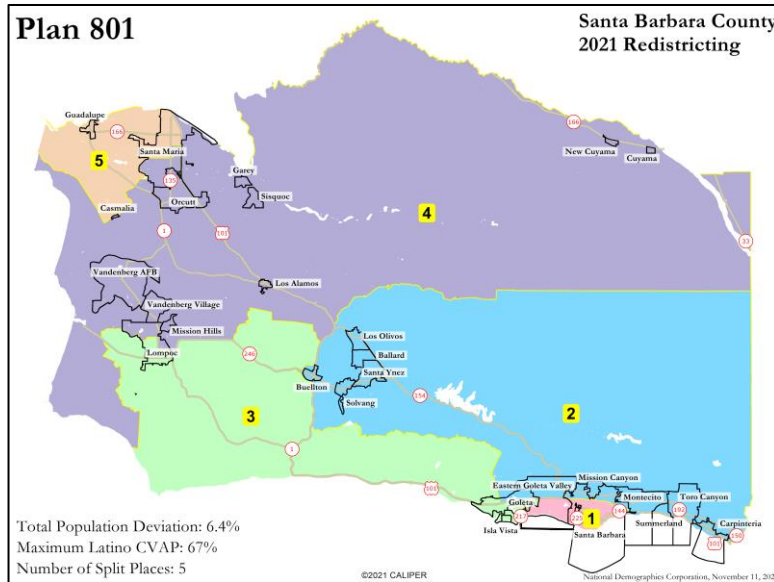
# Subgroup 4: Isla Vista + Lompoc

## 23 Plans, 7 of which include Santa Ynez Valley

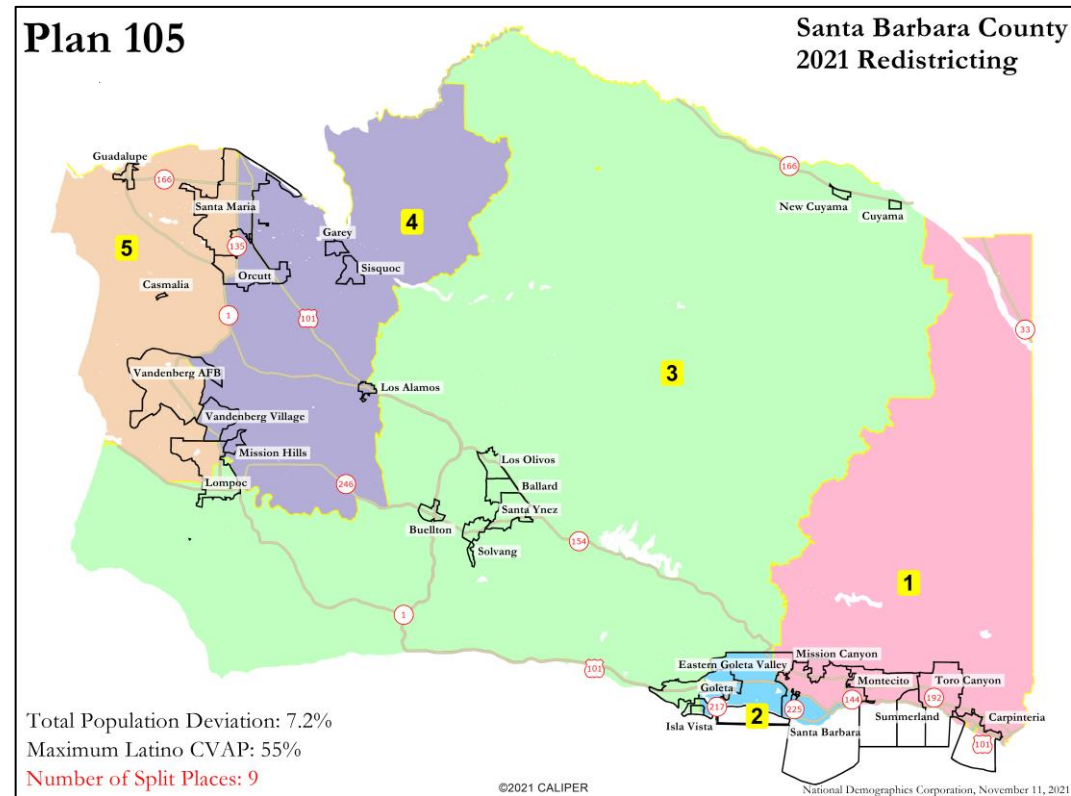


# Subgroup 4: Isla Vista + Lompoc

## 23 Plans, 3 of which include most of Goleta

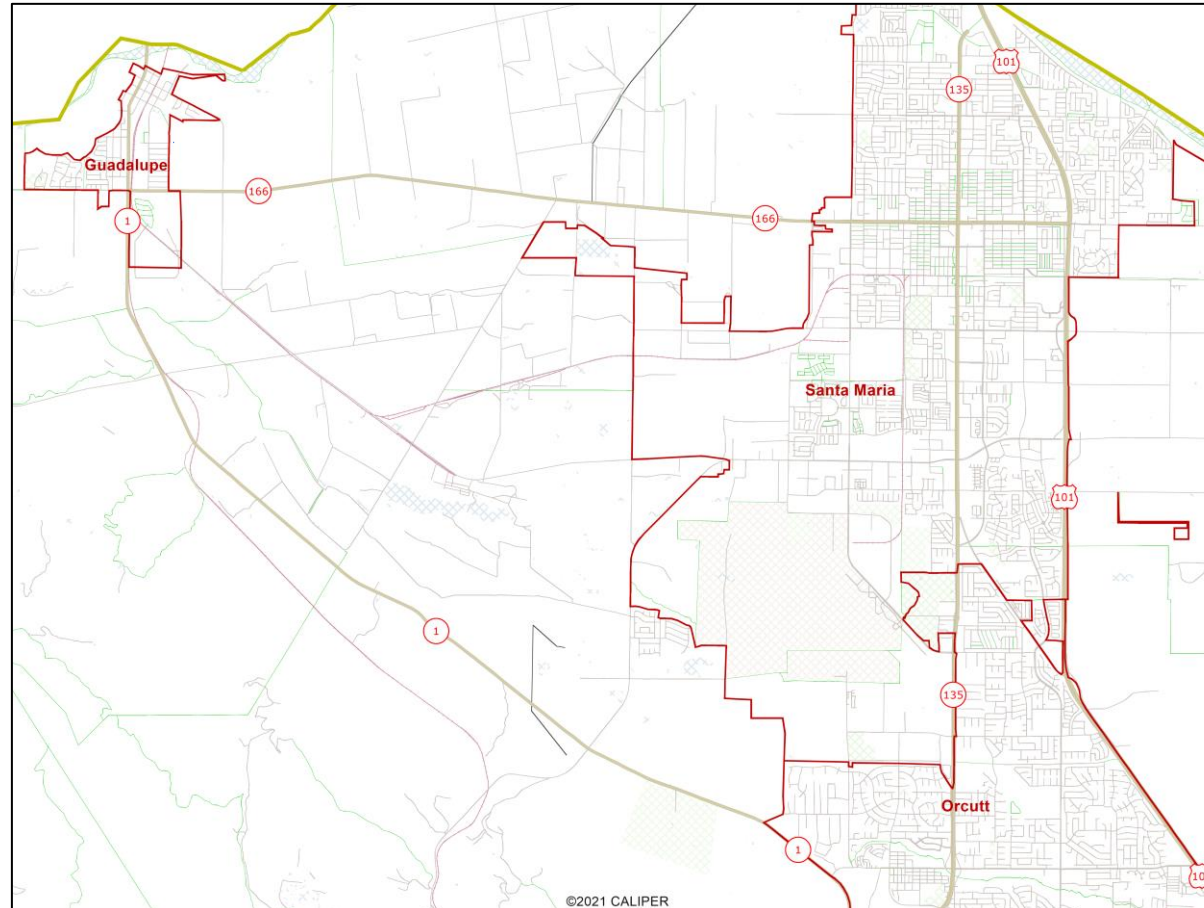


# Subgroup 6: Isla Vista Split 1 Plan

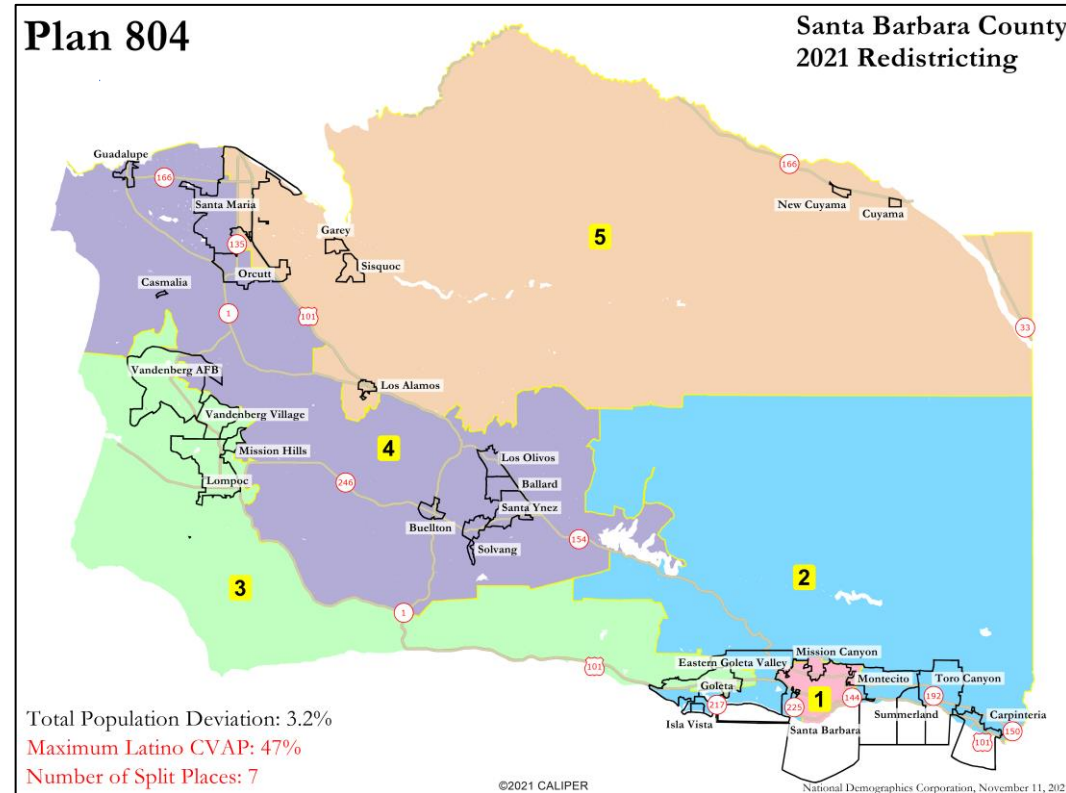


# Group B: Guadalupe + SM + Orcutt

## 4 Plans

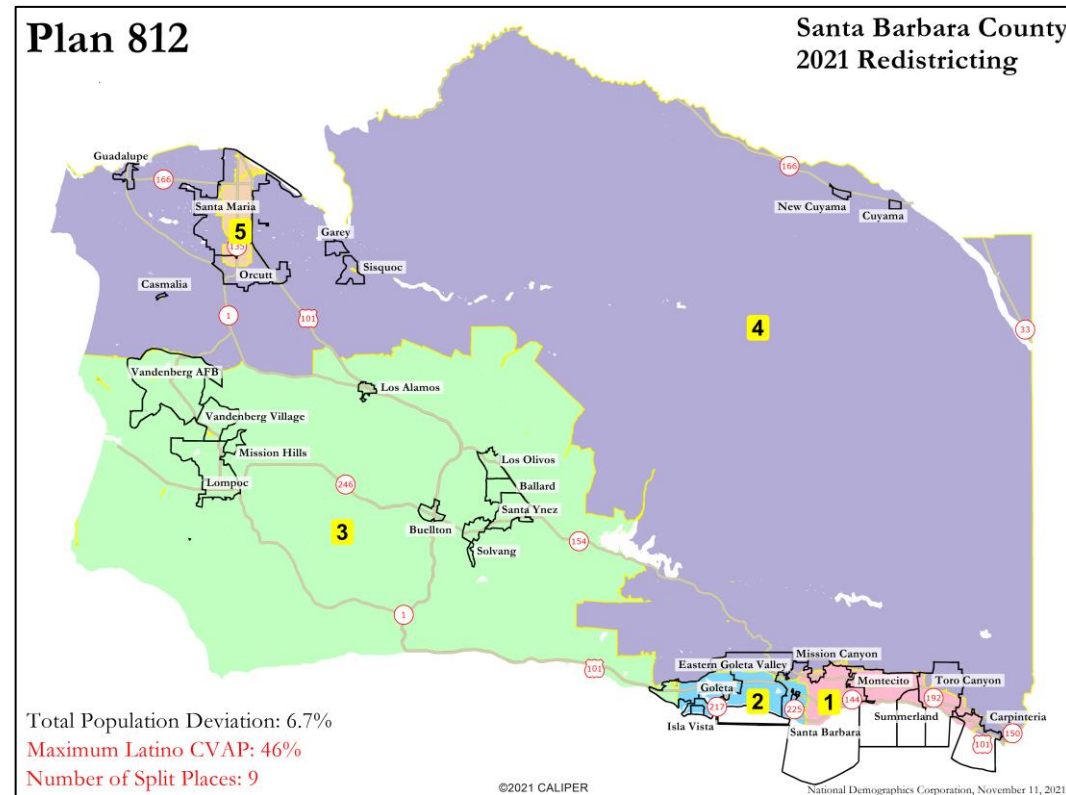


# Subgroup 1: Isla Vista + Carpinteria 1 Plan

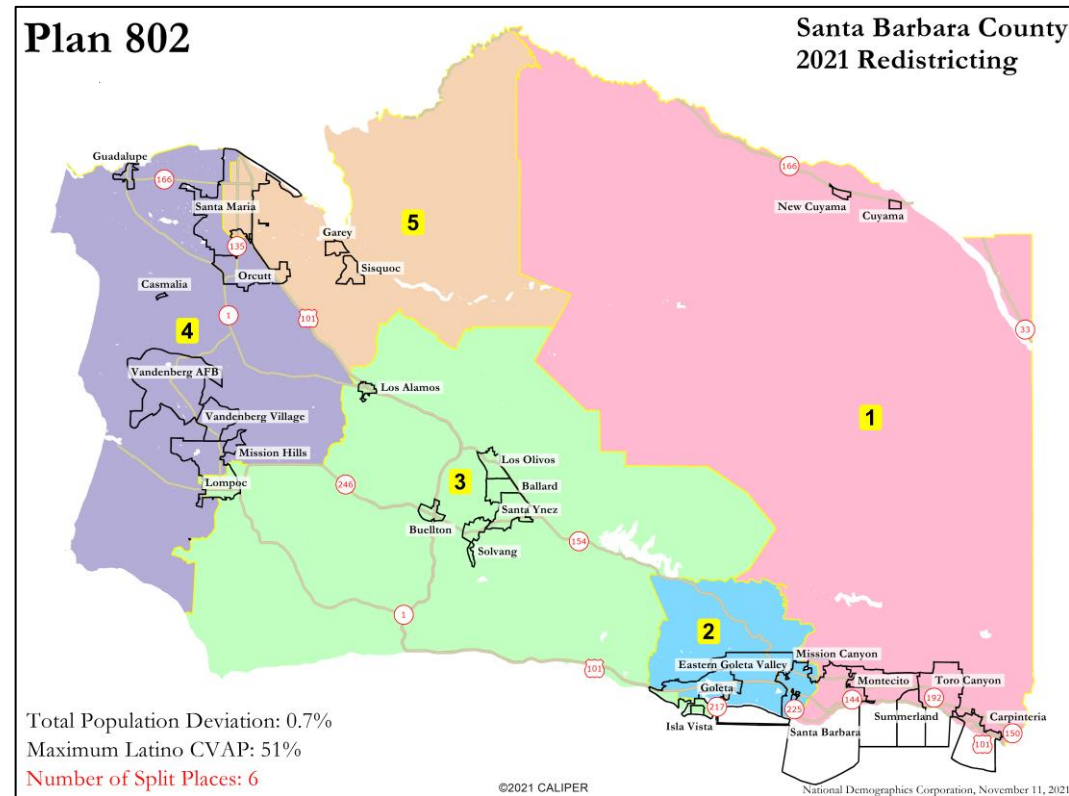


# Subgroup 2: Isla Vista + Santa Barbara

## 1 Plan

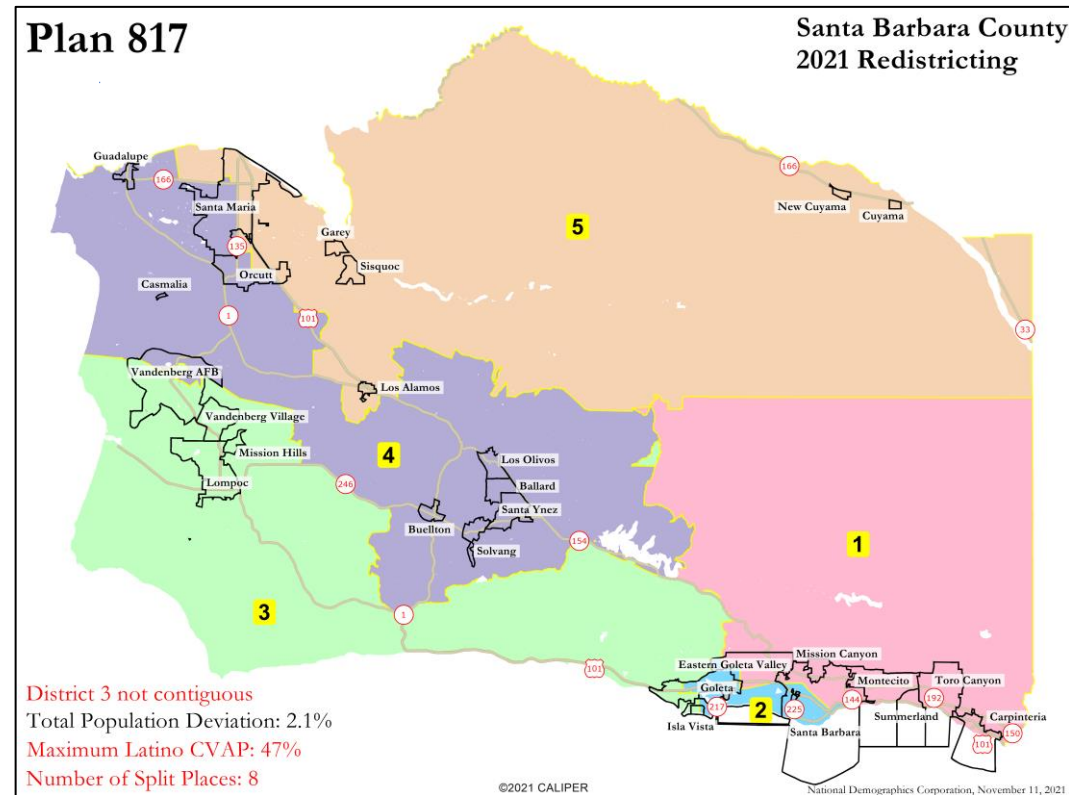


# Subgroup 4: Isla Vista + Lompoc 1 Plan



# Subgroup 6: Isla Vista Split

## 1 Plan



# Public Hearing & Discussion

Questions about the proposed redistricting plans?

Is there a particular plan or plans from each subgroup that jumps out at you or that you want to focus on?

If Guadalupe were to be joined with Santa Maria, where does it make the most sense for Isla Vista to go?

Please visit the [Interactive Review Map](#) on the View Draft Maps page on the website for a more detailed look at each draft plan

Please refer to the PDF postings on the View Draft Maps page for detailed demographics for each plan

# At Monday's Meeting:

Group C: Join Guadalupe with Orcutt (24 plans)

109, 109B, 113, 114, 114B, 118, 118B, 118C, 118D, 124, 133B,  
401, 402, 403, 404, 405, 406, 407, 408, 408B, 704, 806, 811 & 819

Group D: Join Guadalupe with Lompoc (8 plans)

103, 106, 106B, 120, 128, 130, 701 & 705

Group E: Join Guadalupe with Goleta (3 plans)

126, 132 & 805

Group F: Join Guadalupe with Isla Vista (6 plans)

Current, 133, 601, 602, 808 & 816

# At Thursday's Meeting:

Presentation of late-arriving DistrictR submissions (after 11/10) as well as 1 MOR submission

Followed by Commission deliberations and identification of focus maps

# Next Meeting

Monday  
November 15, 2021  
6:00 p.m. to 8:00 p.m.

Betteravia Hearing Room  
511 East Lakeside Parkway  
Santa Maria, CA

# [DrawSantaBarbaraCounty.org](http://DrawSantaBarbaraCounty.org)