



Santa Barbara County **REDISTRICTING**

DrawSantaBarbaraCounty.org

Rules For Drawing the Lines

In accordance with federal, state, county law, the Commission must draw lines pursuant to the following criteria, which are listed in order of priority:

1. Federal Laws

- US Constitution – reasonable equal population and no racial gerrymandering
- Federal Voting Rights Act

2. State Law and Measure G Requirements

1. California Voting Rights Act
2. Geographical-contiguity
3. Undivided neighborhoods and “communities of interest”
4. Undivided cities and Census designated place
5. Easily identifiable boundaries
6. Compact
7. Topography, geography, and cohesiveness

3. Other Traditional Redistricting Principles

- Future population growth
- Minimize voters shifted to different election years

In addition, the Commission is prohibited from considering the residence of any incumbent or political candidate and districts shall not be drawn for purposes of favoring or discriminating against an incumbent, political candidate, or political party.

A Note about District Numbering

An attempt was made to keep the numbering of the districts consistent across all the plans, with consistent coloring as well

This means that District 1 is always based in Downtown Santa Barbara, District 5 is always based in Downtown Santa Maria, and Districts 2, 3, and 4 proceed in a south to north fashion as one would travel up US 101 from Santa Barbara to Santa Maria

District 1 is pink

District 2 is blue

District 3 is green

District 4 is purple

District 5 is orange

What Key Stats are Shown on the Map of Each Plan?

Total Population Deviation: The difference in population between the most populated district and the least populated district, divided by the ideal population of a district – should be less than 10%

Maximum Latino CVAP: The highest value among all districts for the proportion of the citizen voting age population that is Latino

Number of Split Places: The number of Census places (either incorporated cities or unincorporated Census-designated places) that are split between multiple districts – the fewer the better

More detailed stats are available in the full demographics table posted for each plan on the View Draft Maps page

Viable Plans Grouped as so:

Guadalupe and Isla Vista seem to be the two hinge points, as they are currently the twin anchors of the Third District that cuts across the county

Draft plans are divided into six groups according to which part of the county each plan decides to join with Guadalupe:

- Group A (11/12): Join Guadalupe with Santa Maria (39 plans)
- Group B (11/12): Join Guadalupe with Santa Maria and Orcutt (4 plans)
- Group C (today): Join Guadalupe with Orcutt (24 plans)
- Group D (today): Join Guadalupe with Lompoc (8 plans)
- Group E (today): Join Guadalupe with Goleta (3 plans)
- Group F (today): Join Guadalupe with Isla Vista (6 plans)
- Considered on 11/18: Late arriving submissions

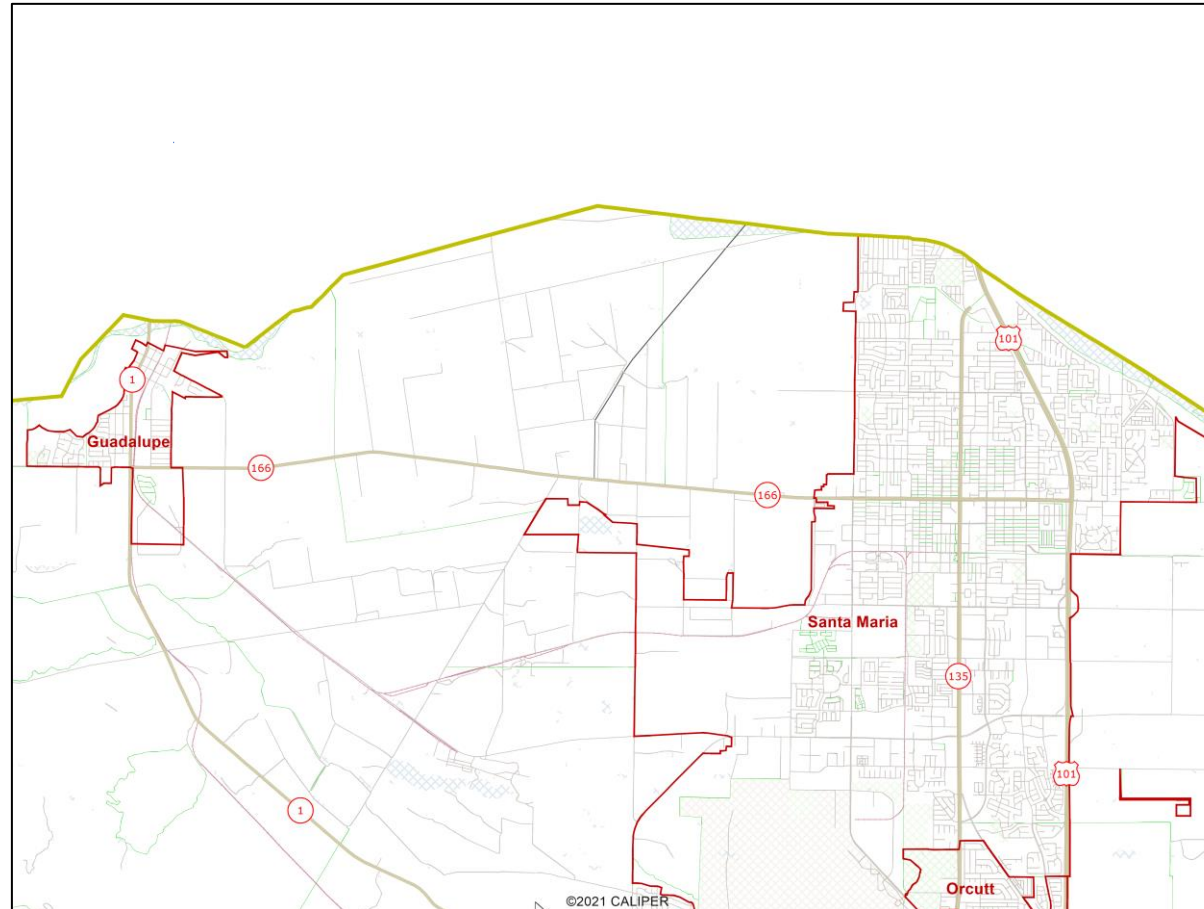
Viable Plans Grouped as so:

Draft plans are further divided into six subgroups according to which part of the county each decides to join with Isla Vista

- Subgroup 1: Join Isla Vista with Carpinteria (6 plans total)
- Subgroup 2: Join Isla Vista with Santa Barbara (31 plans total)
- Subgroup 3: Join Isla Vista with Goleta (6 plans total)
- Subgroup 4: Join Isla Vista with Lompoc (30 plans total)
- Subgroup 5: Join Isla Vista with Guadalupe (6 plans total)
- Subgroup 6: Split Isla Vista Between Two Districts (5 plans total)

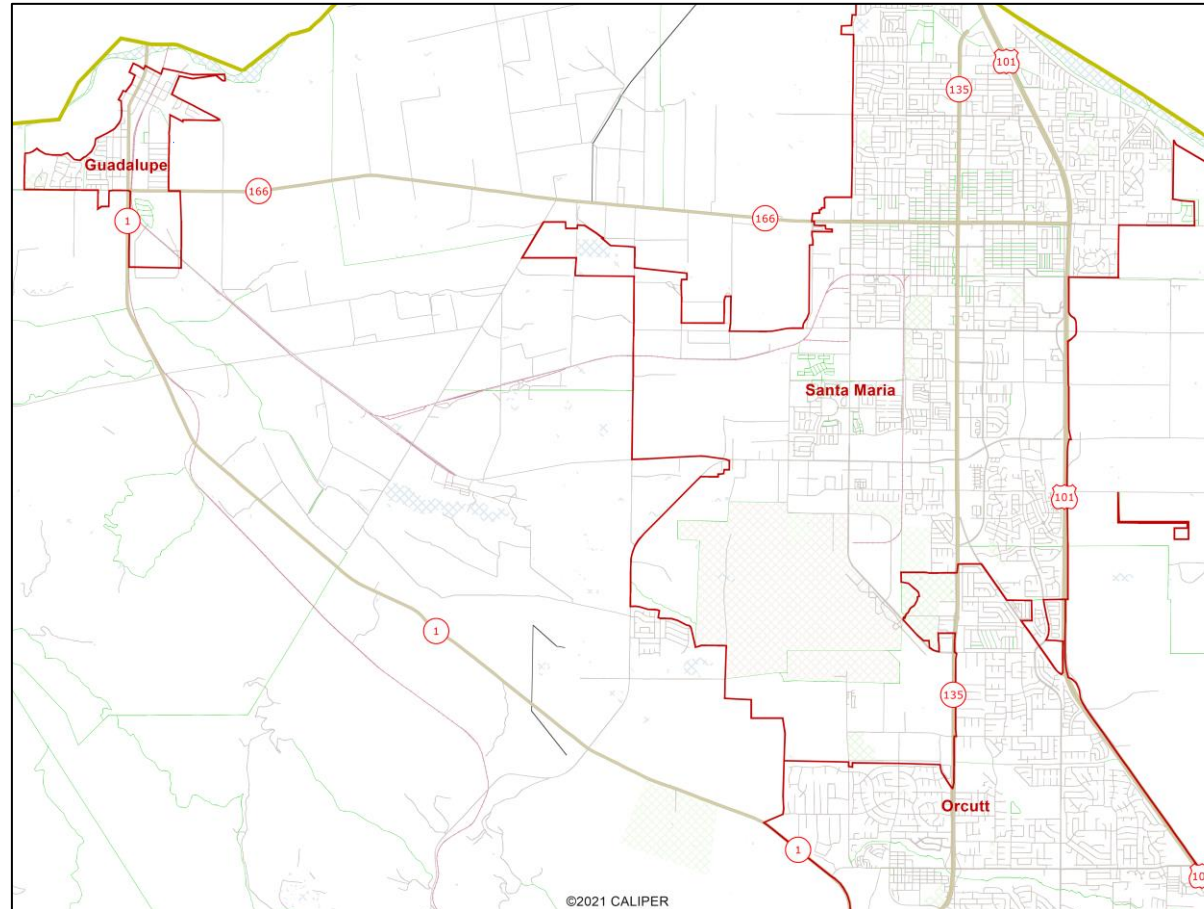
Group A: Guadalupe + Santa Maria

39 Plans



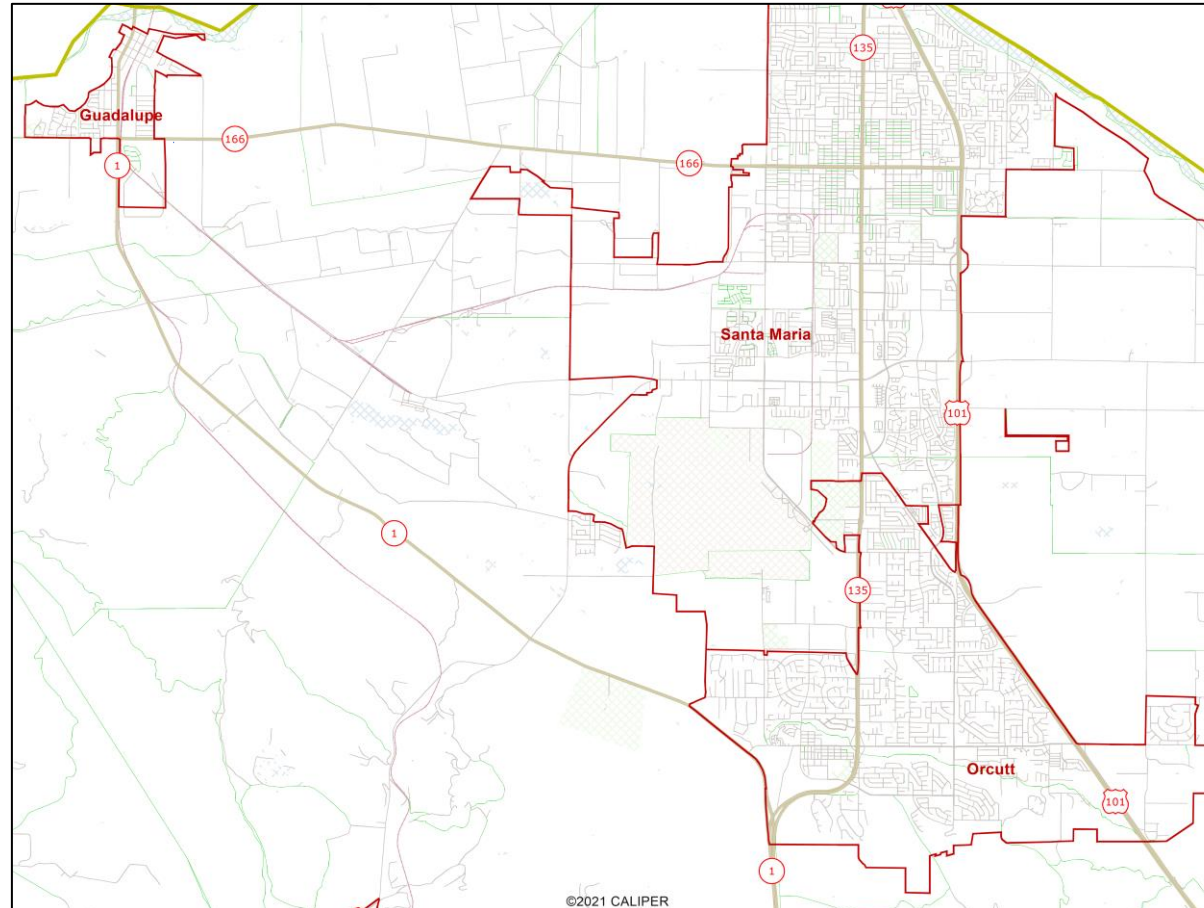
Group B: Guadalupe + SM + Orcutt

4 Plans



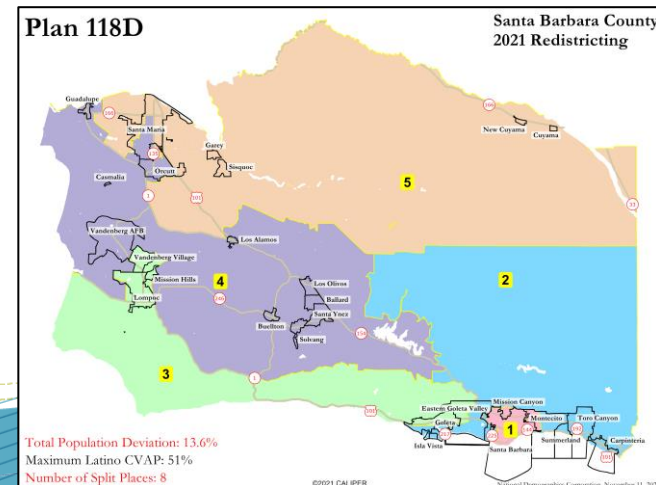
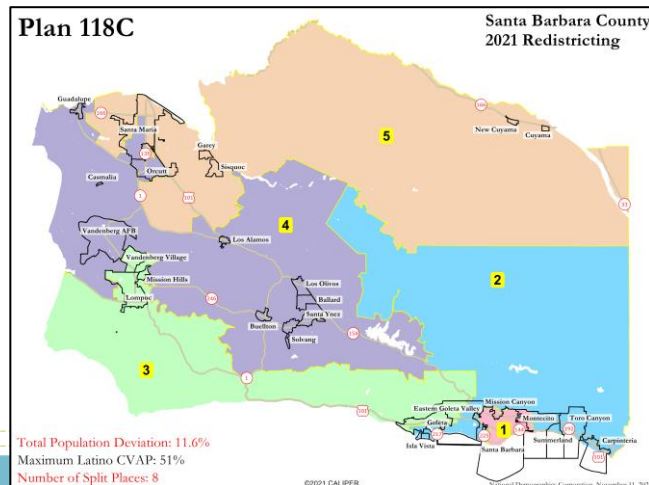
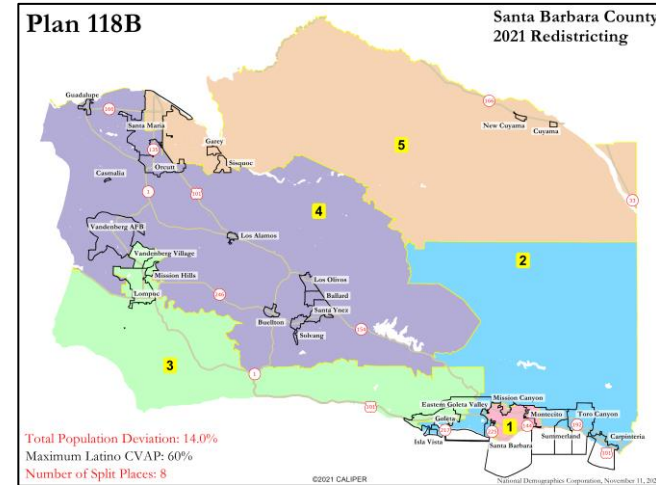
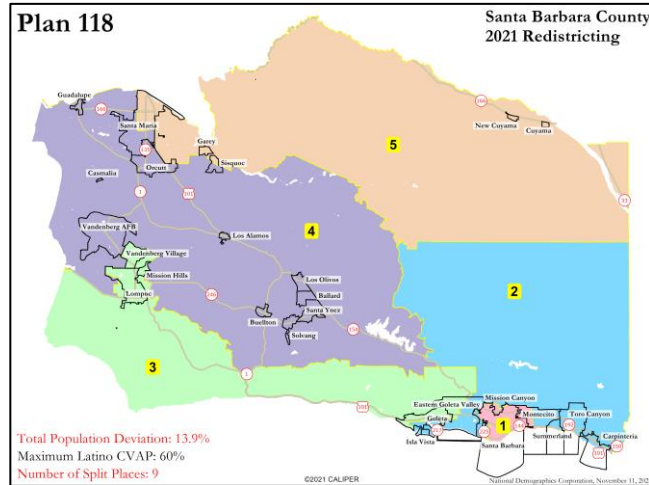
Group C: Guadalupe + Orcutt

24 Plans



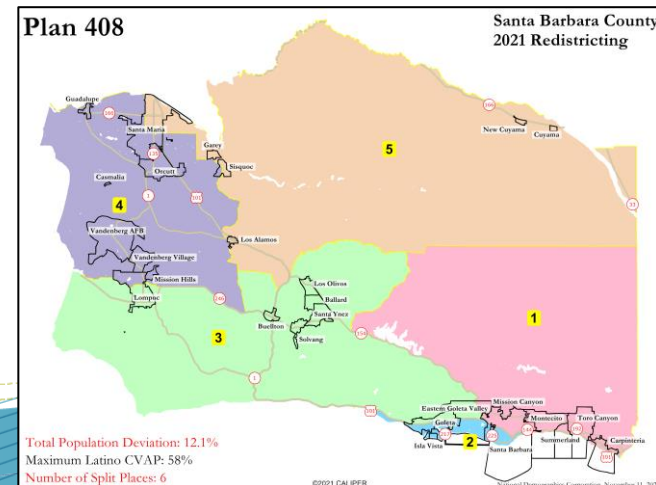
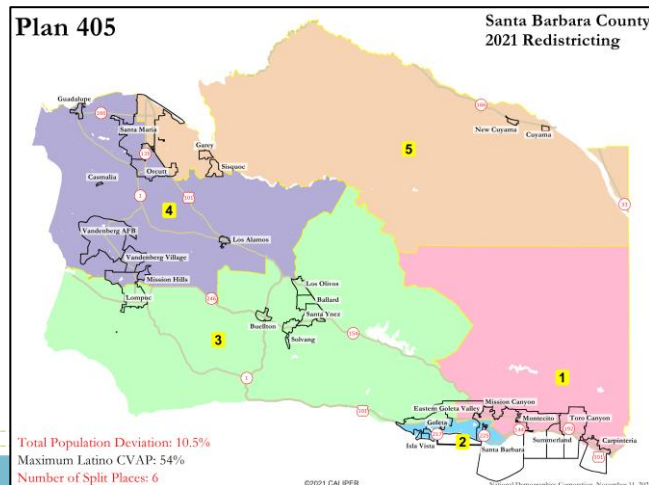
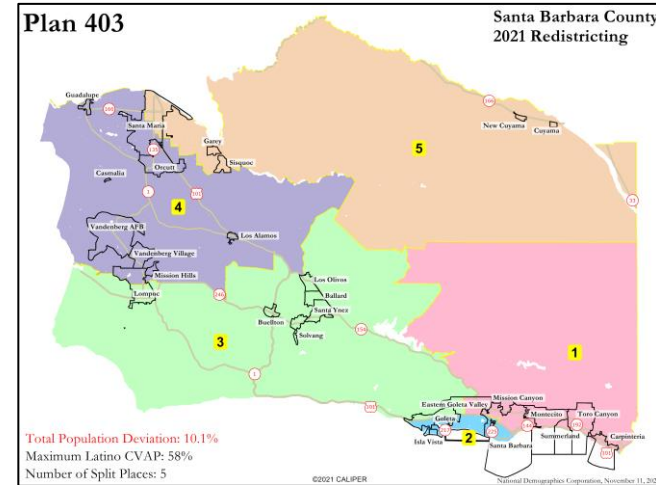
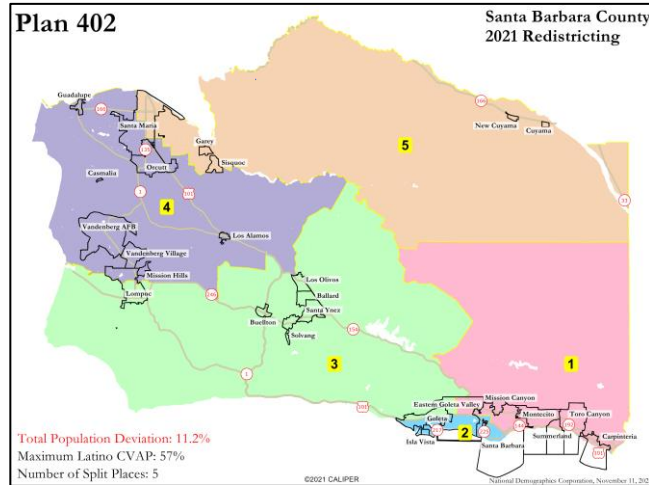
Subgroup 1: Isla Vista + Carpinteria

4 Plans, all of which are not population balanced



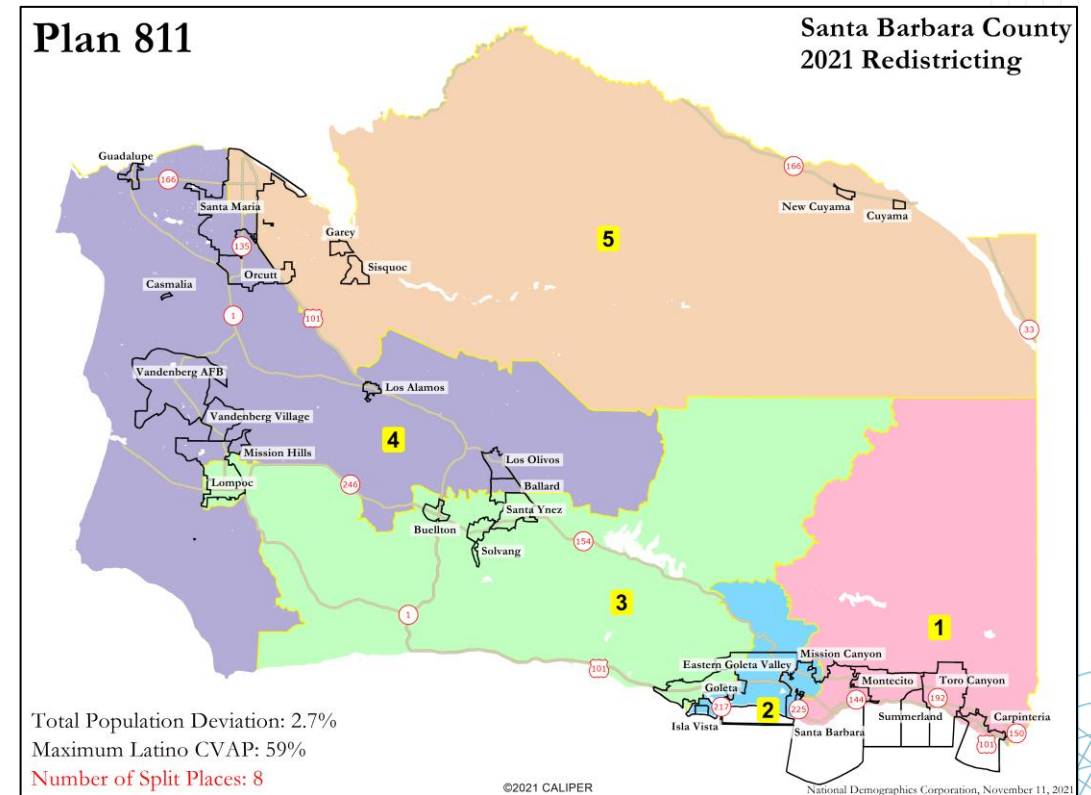
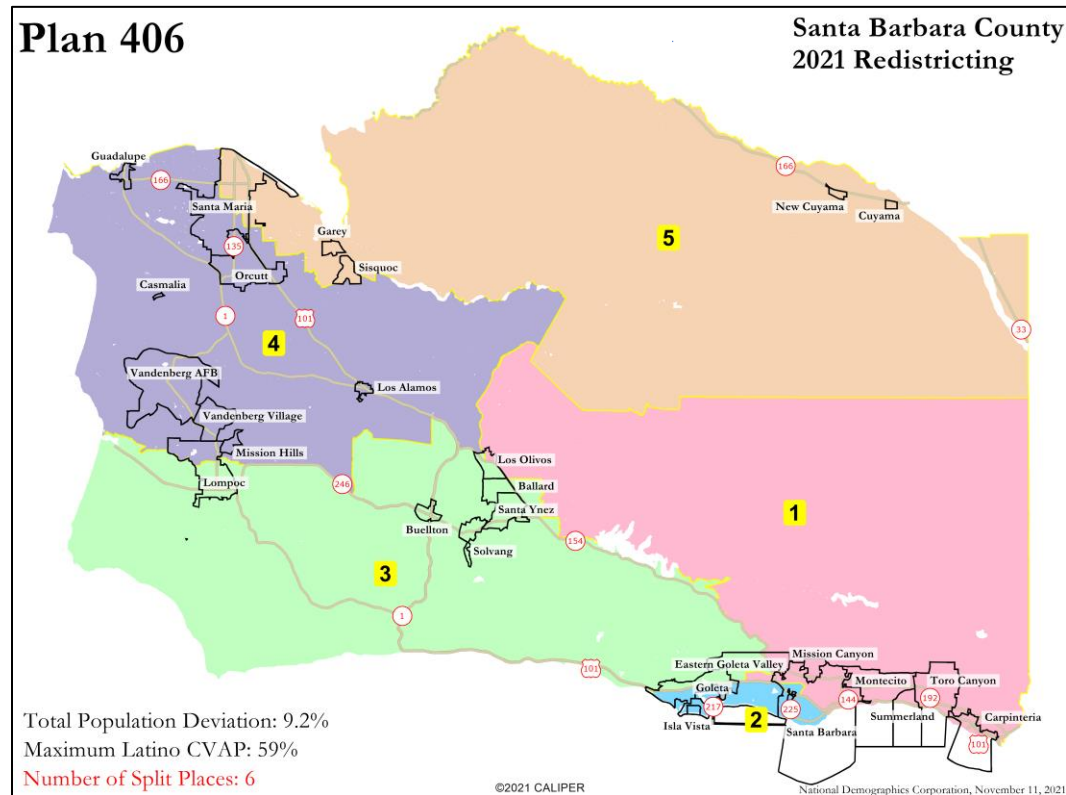
Subgroup 2: Isla Vista + Santa Barbara

11 Plans, 4 of which are not population balanced



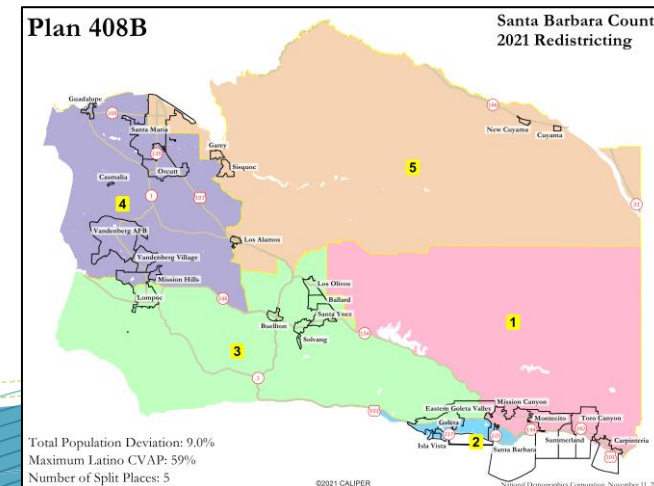
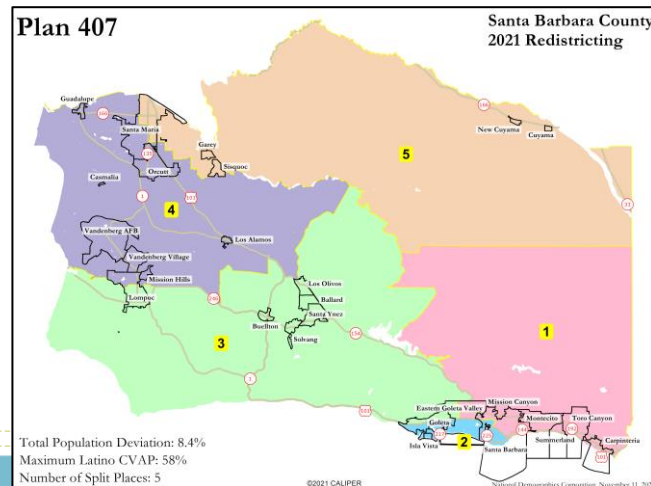
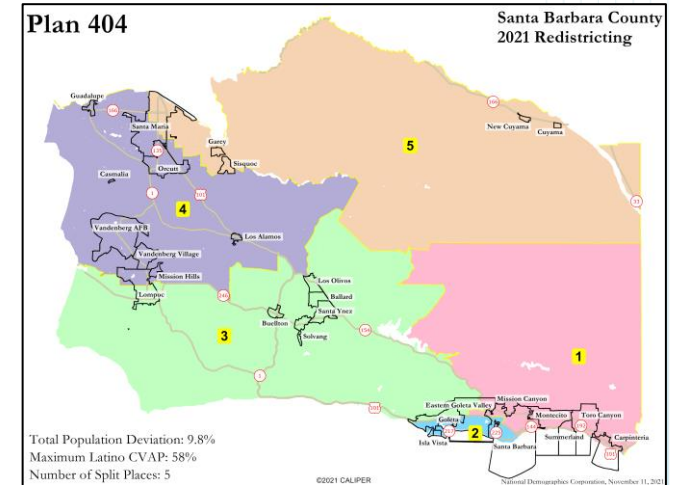
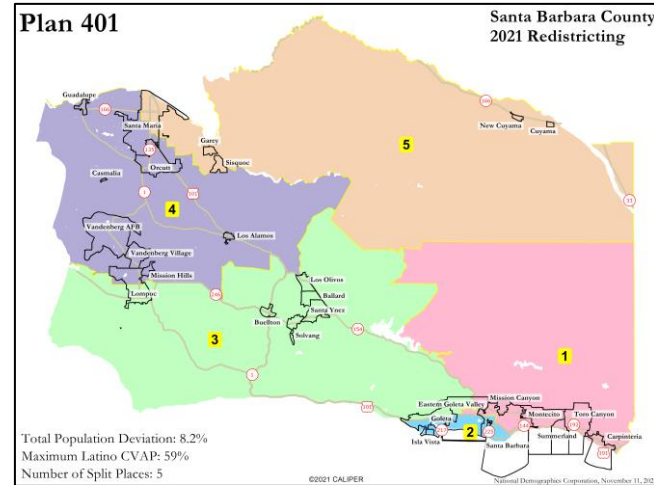
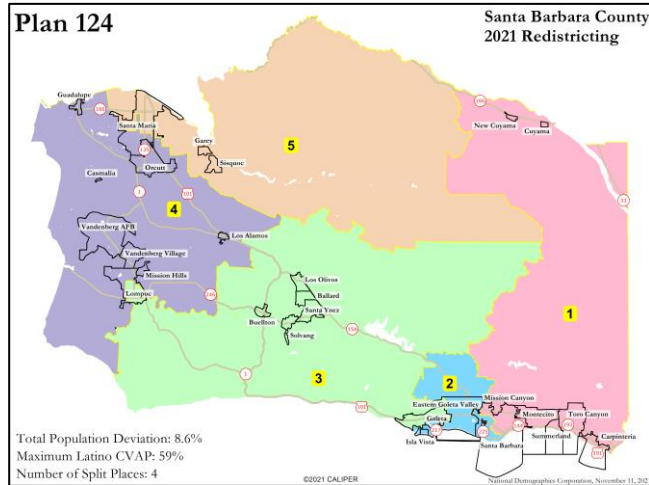
Subgroup 2: Isla Vista + Santa Barbara

11 Plans, 2 of which split many places



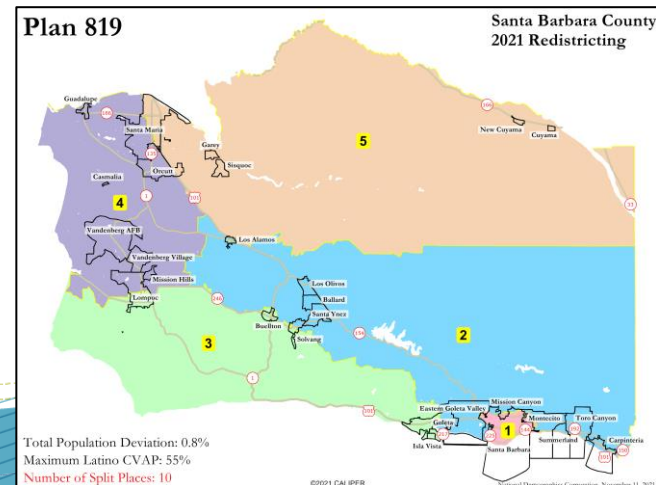
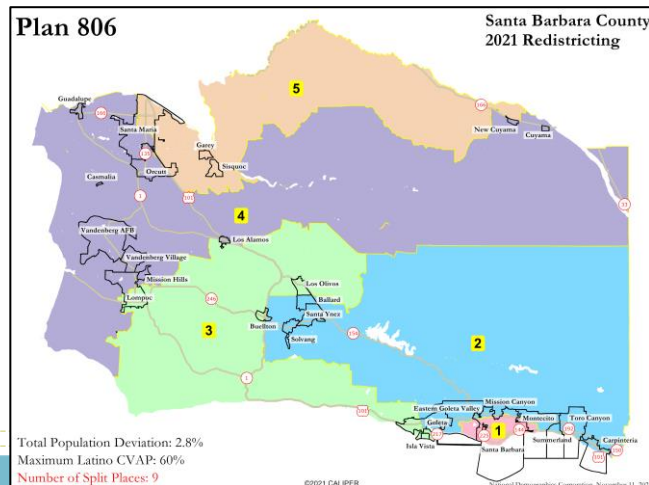
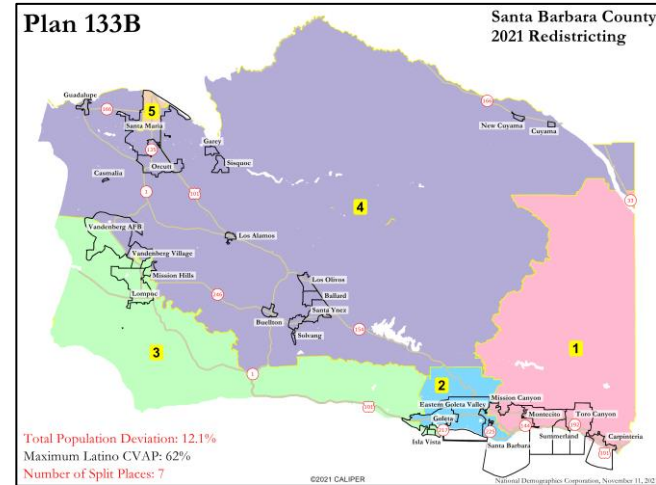
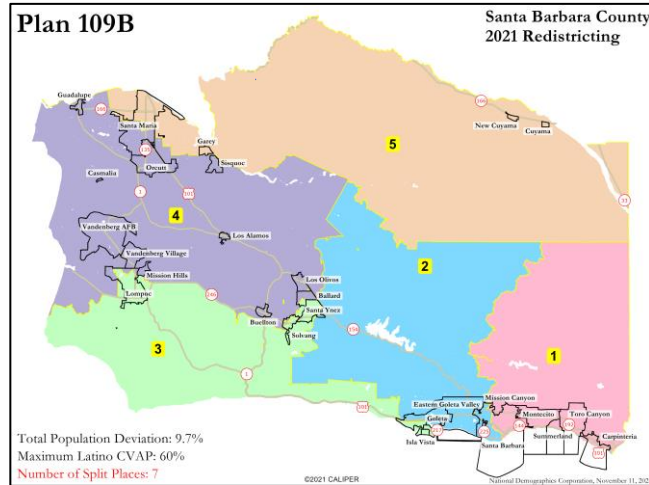
Subgroup 2: Isla Vista + Santa Barbara

11 Plans, 5 of which remain



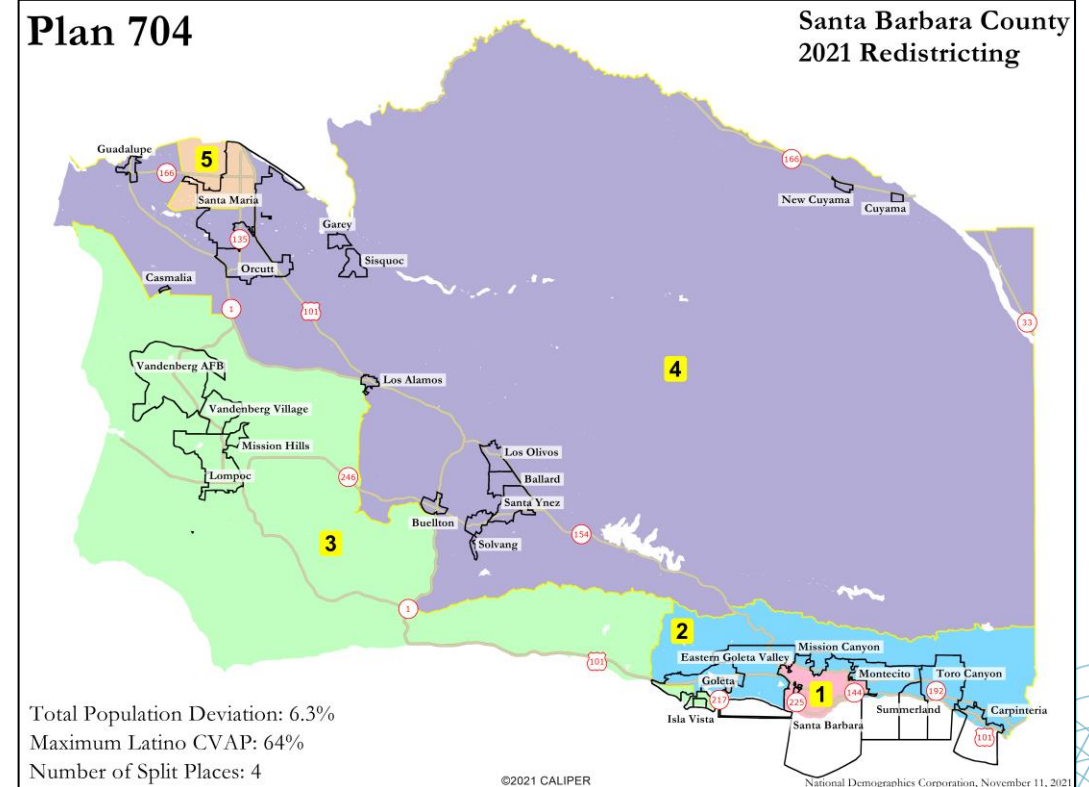
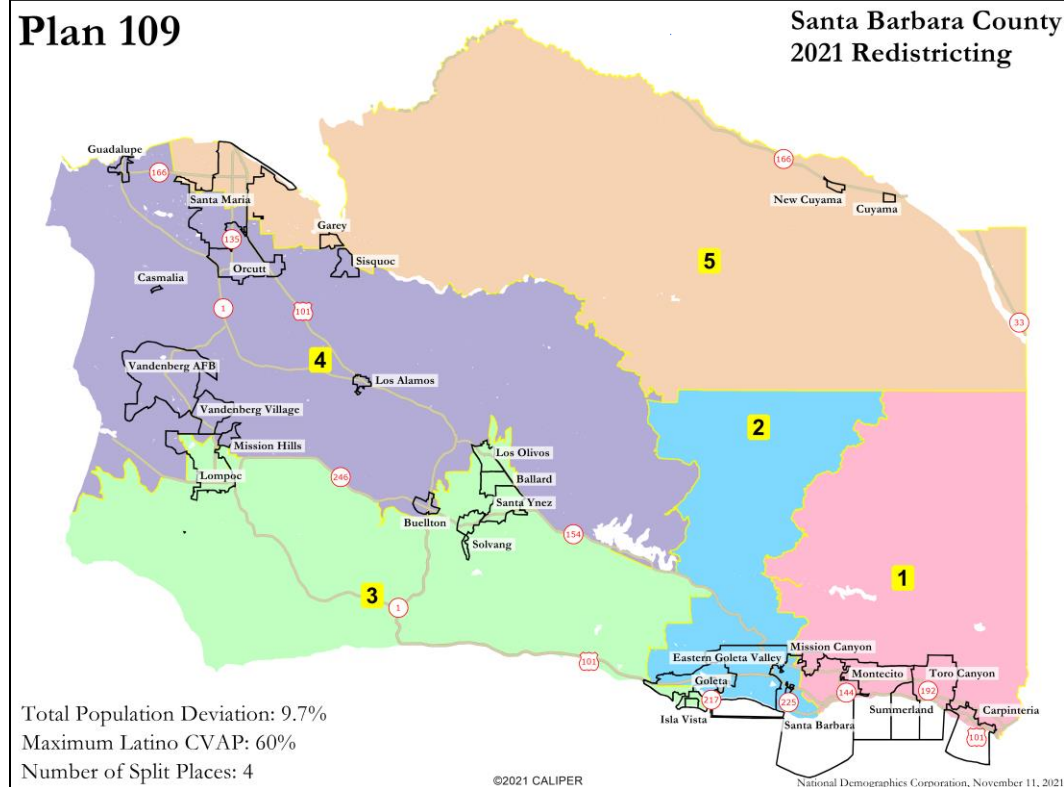
Subgroup 4: Isla Vista + Lompoc

6 Plans, 4 of which split many places



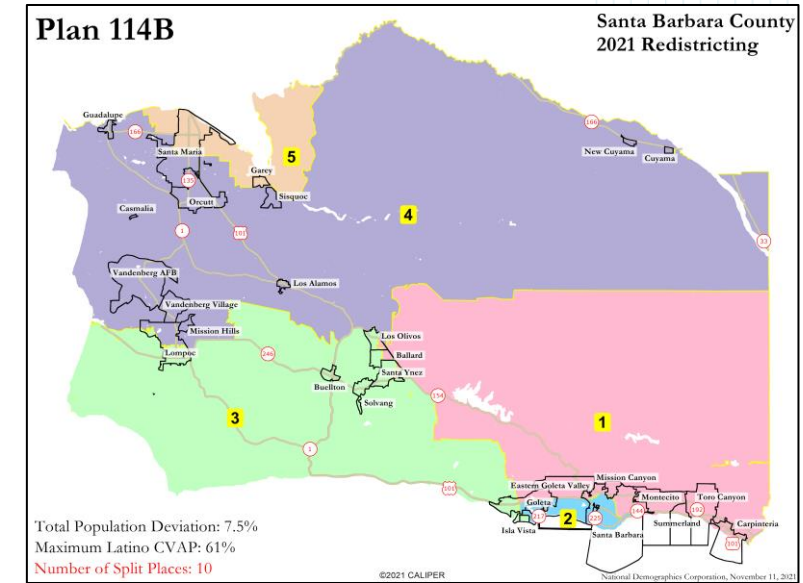
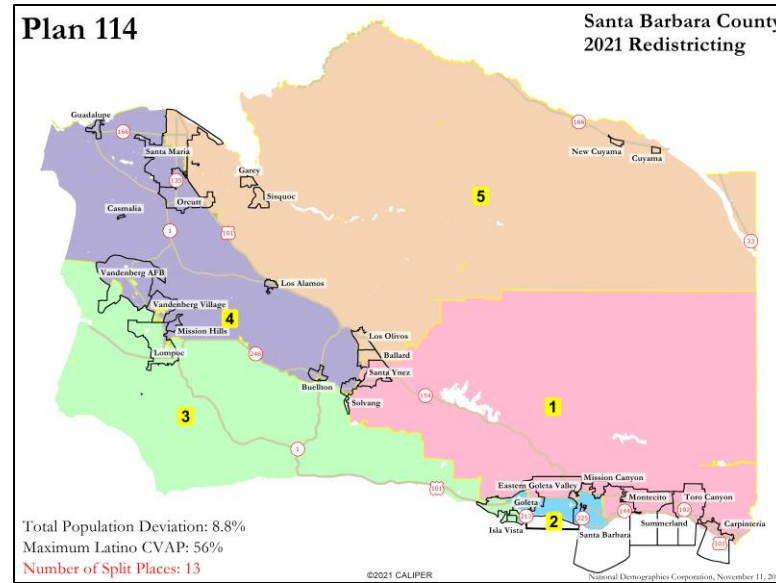
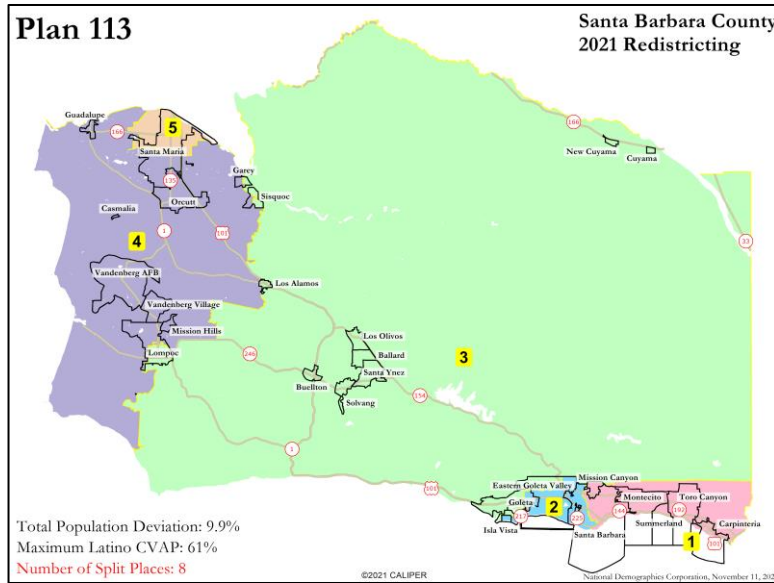
Subgroup 4: Isla Vista + Lompoc

6 Plans, 2 of which remain



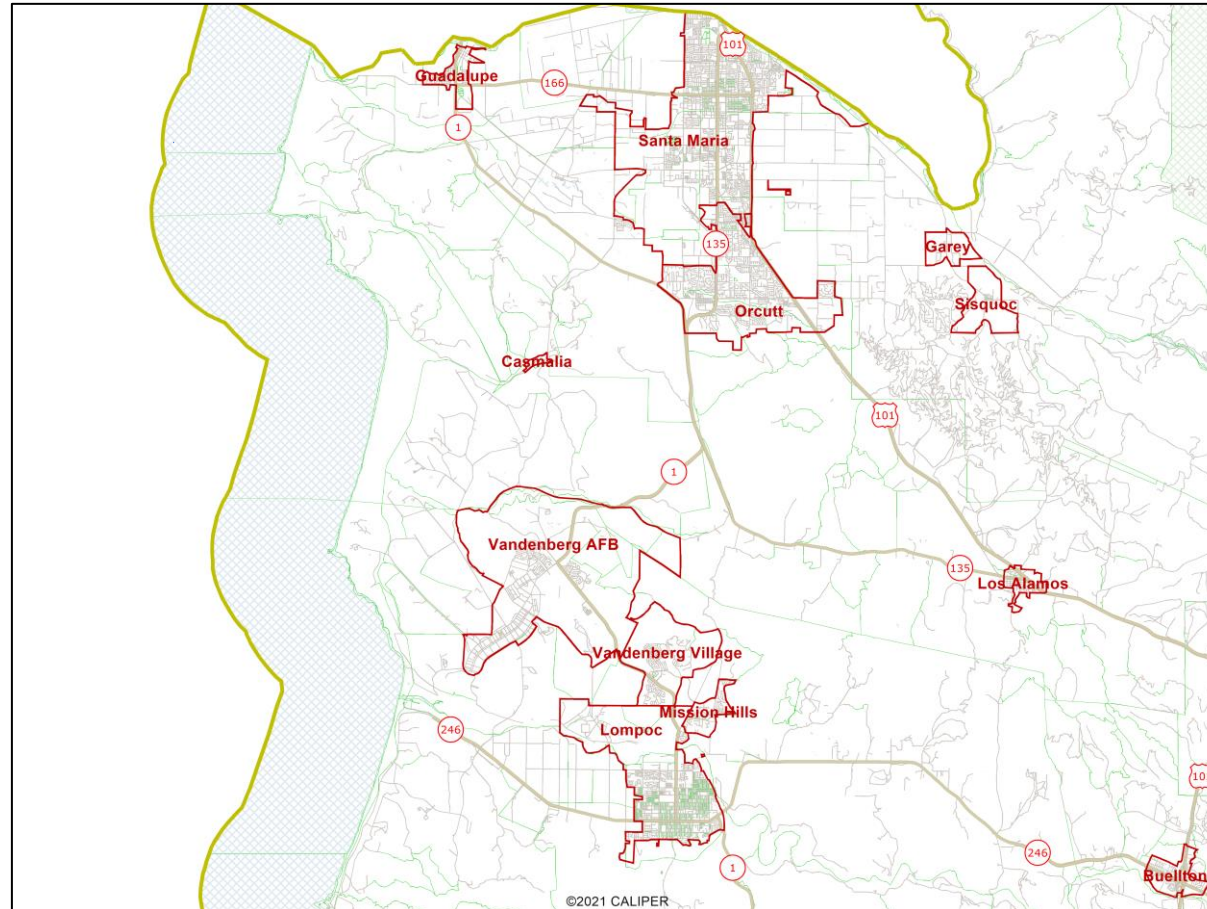
Subgroup 6: Isla Vista Split

3 Plans, all of which split many places



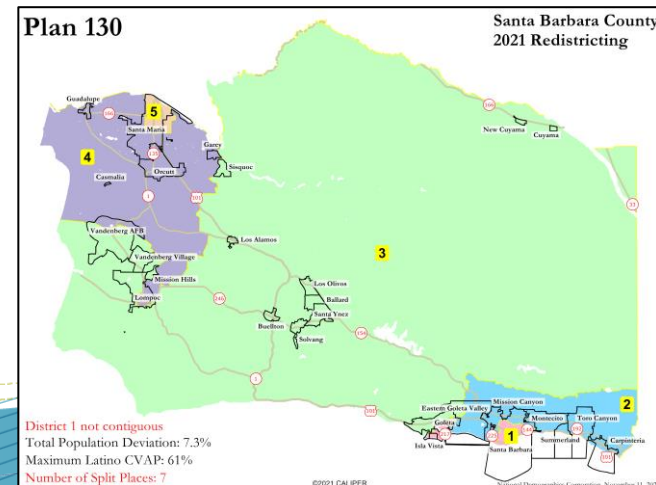
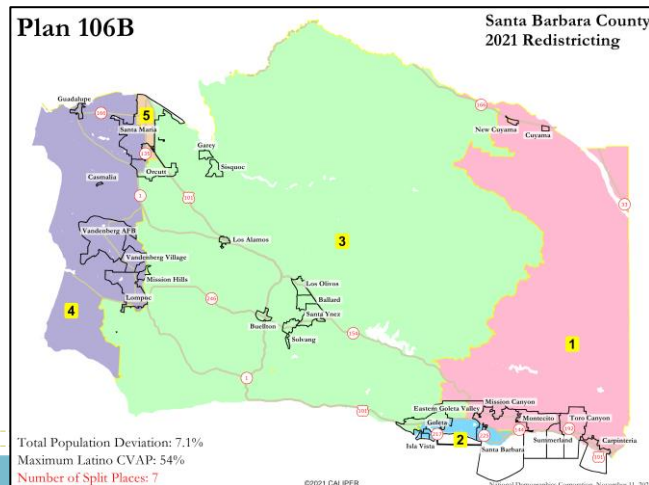
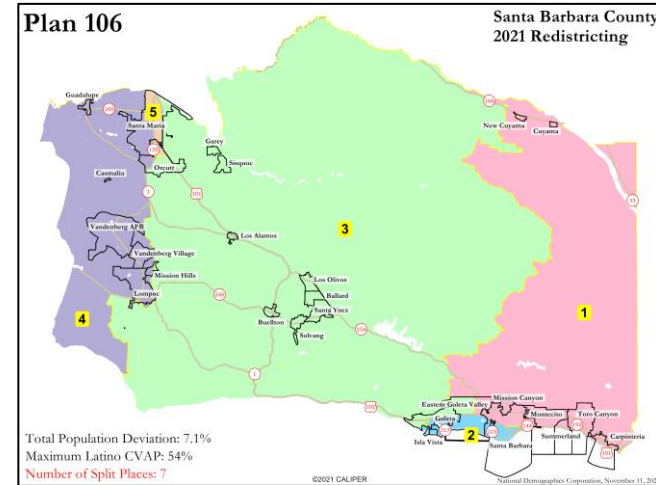
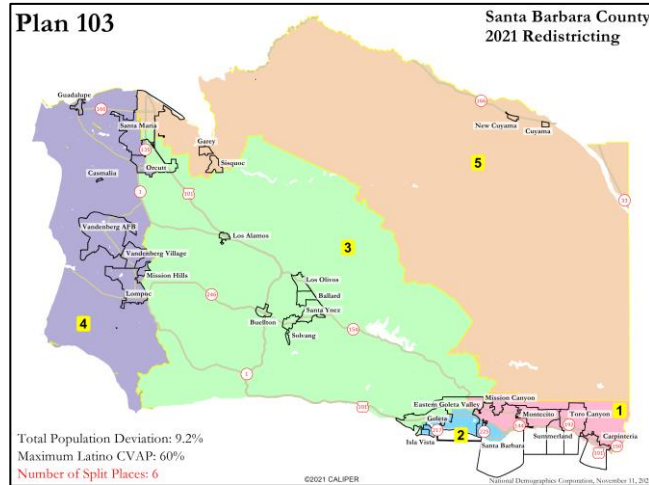
Group D: Guadalupe + Lompoc

8 Plans



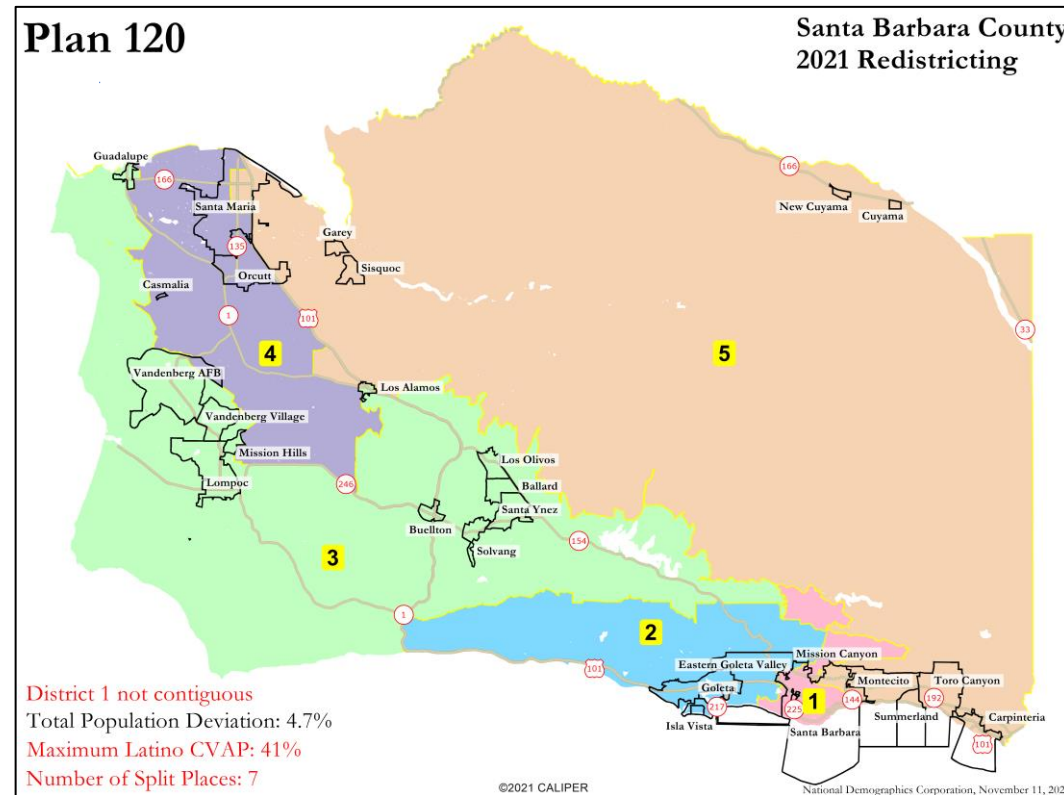
Subgroup 2: Isla Vista + Santa Barbara

4 Plans, all of which split many places



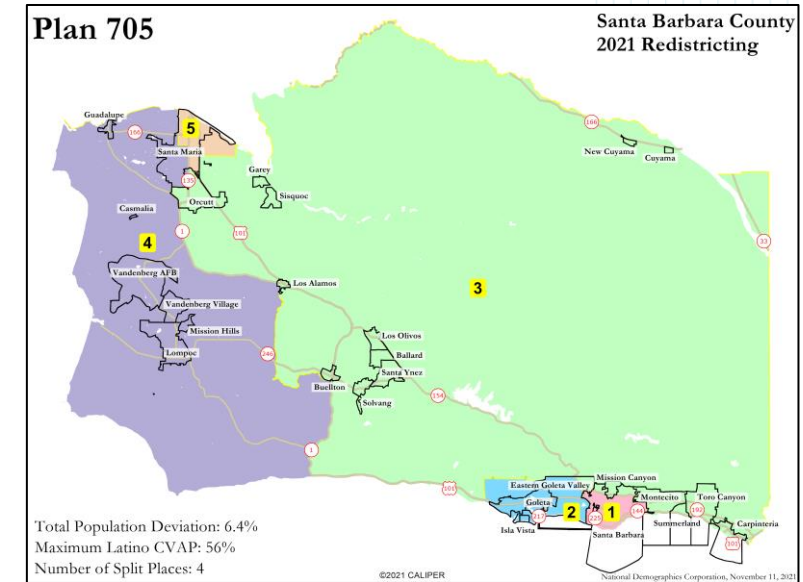
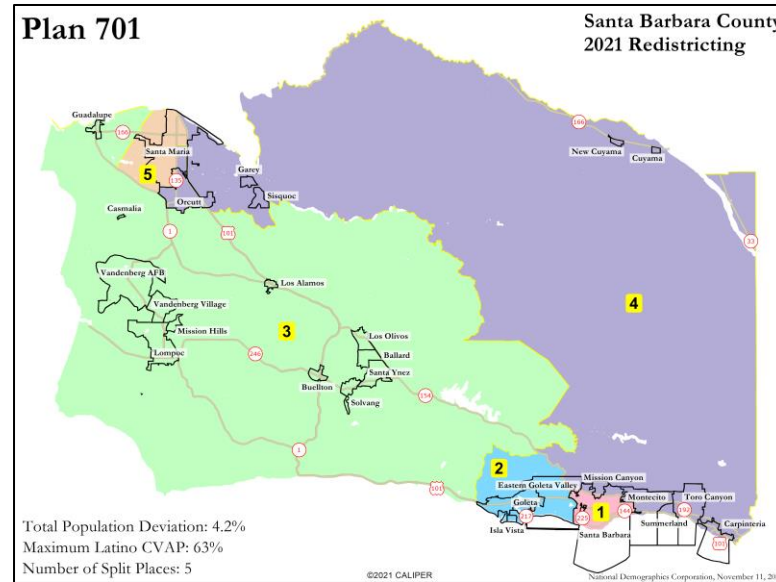
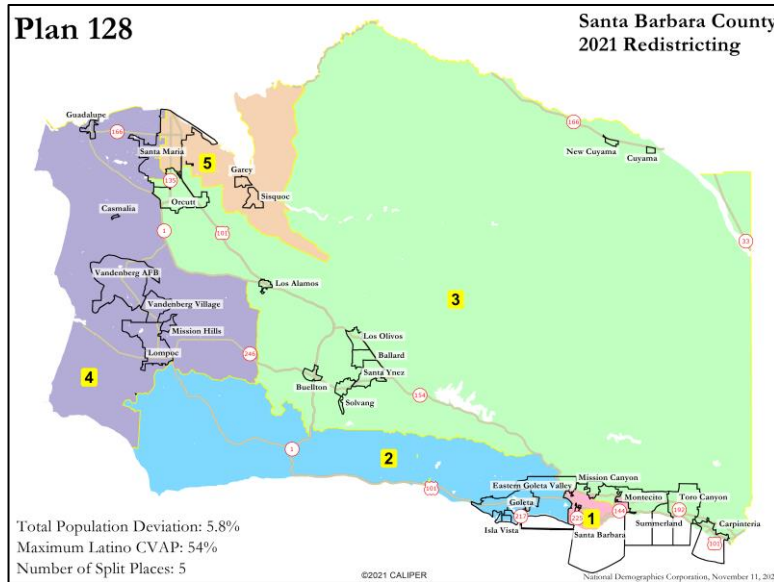
Subgroup 3: Isla Vista + Goleta

4 Plans, 1 of which lacks a majority Latino district



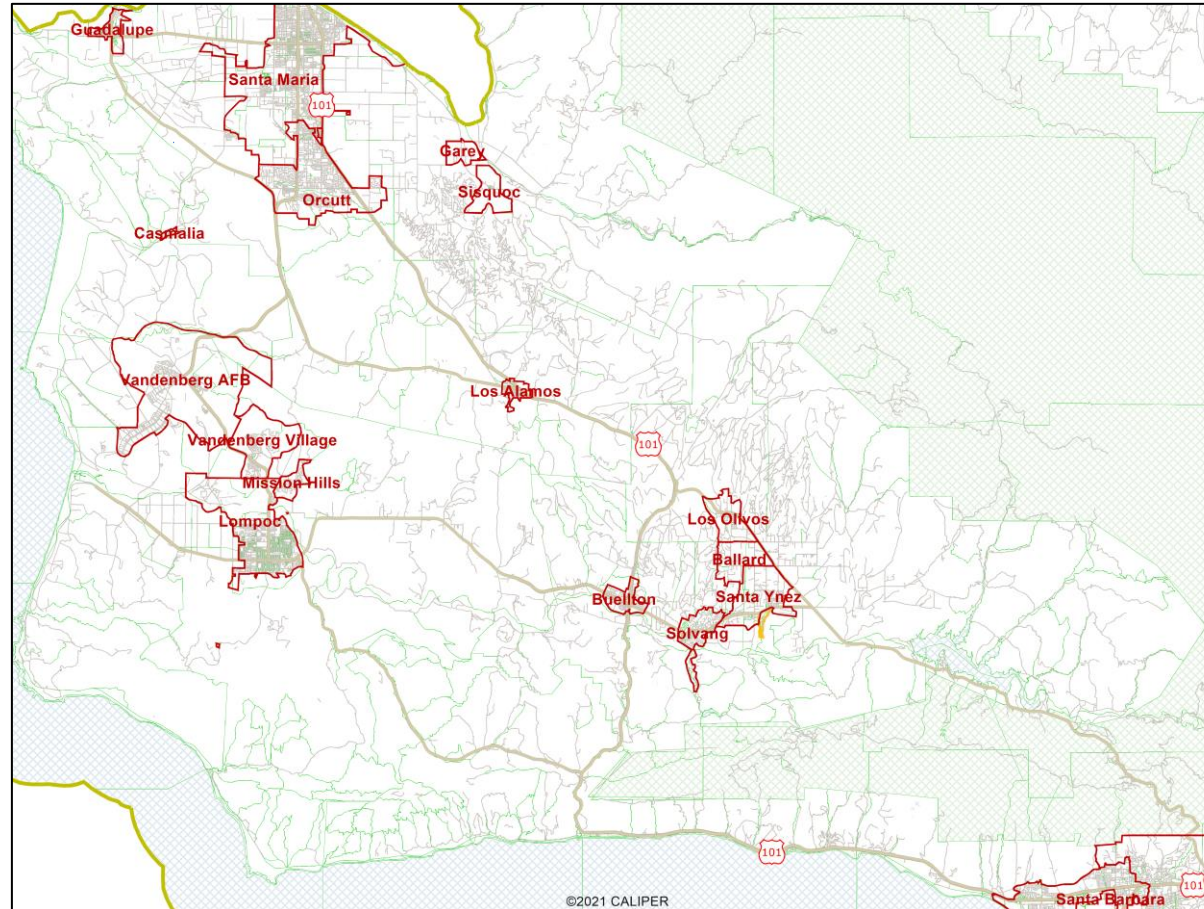
Subgroup 3: Isla Vista + Goleta

4 Plans, 3 of which remain



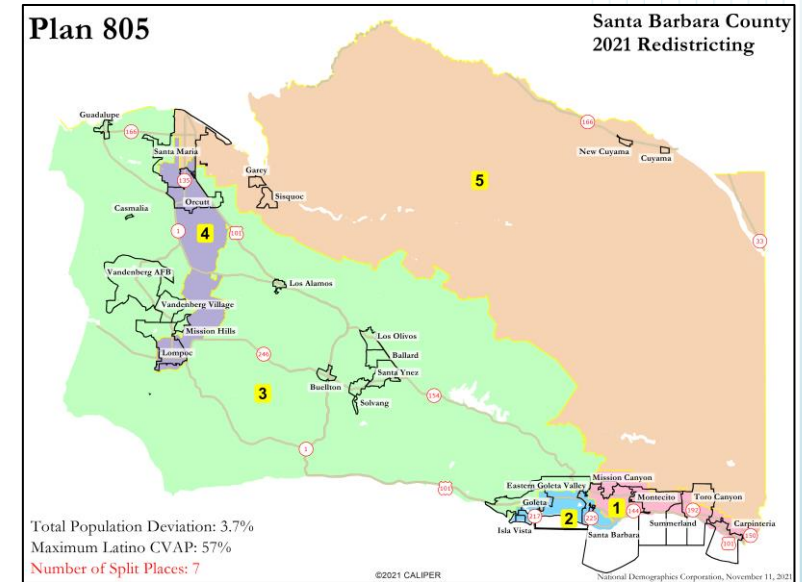
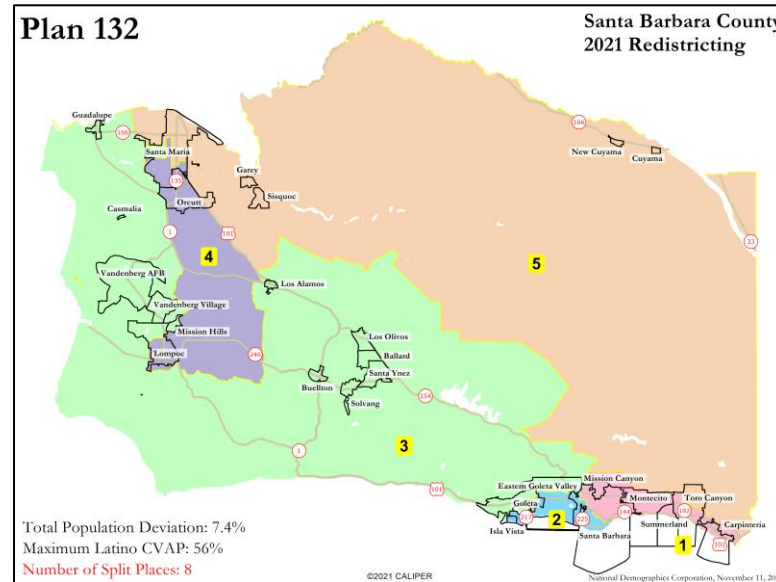
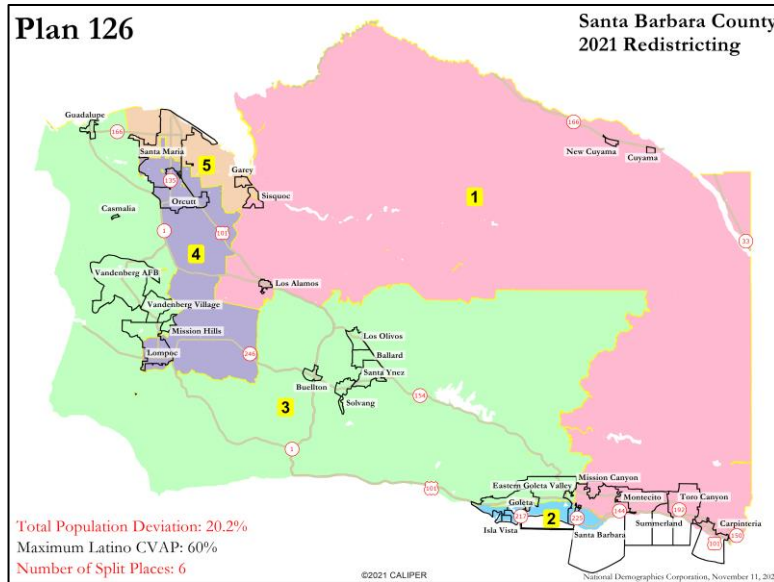
Group E: Guadalupe + Goleta

3 Plans



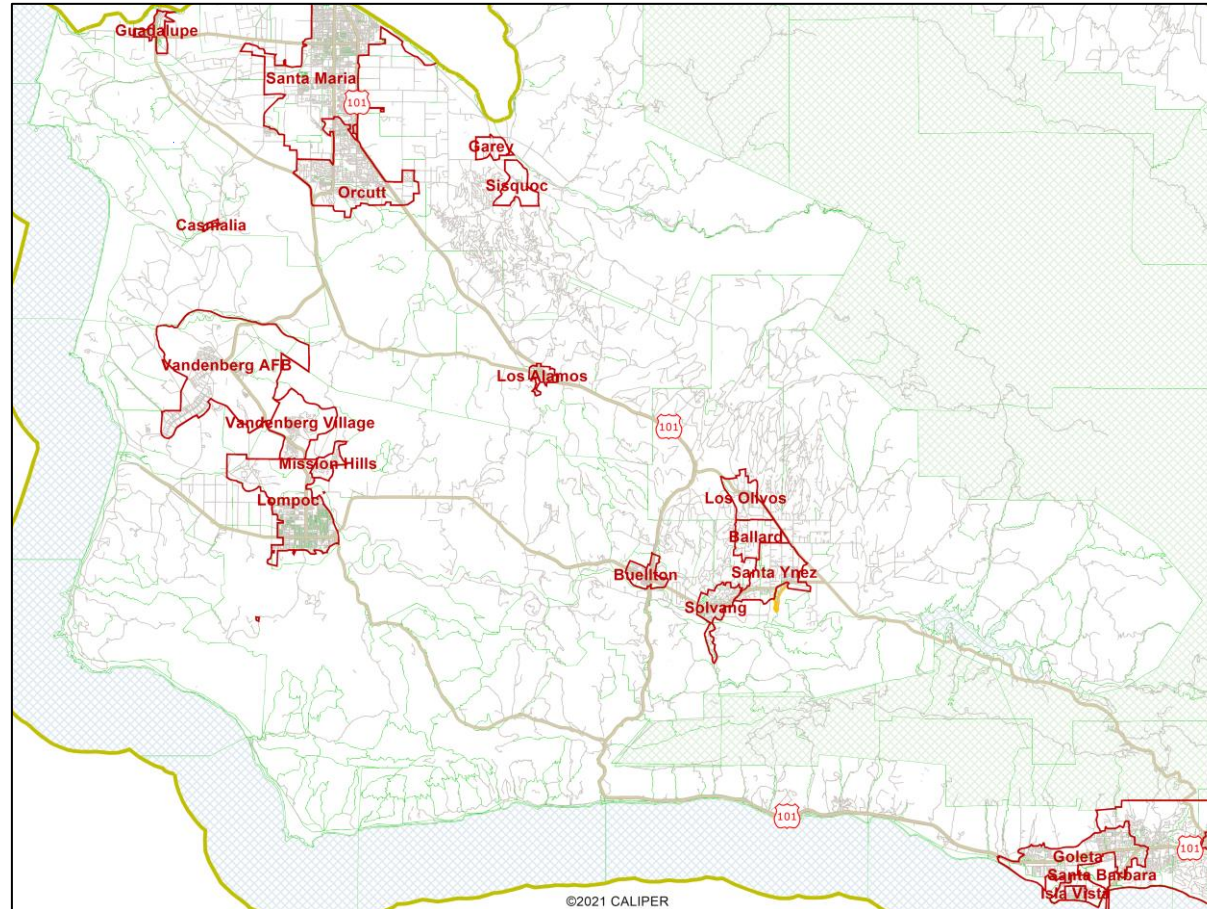
Subgroup 2: Isla Vista + Santa Barbara

3 Plans, all of which split many places



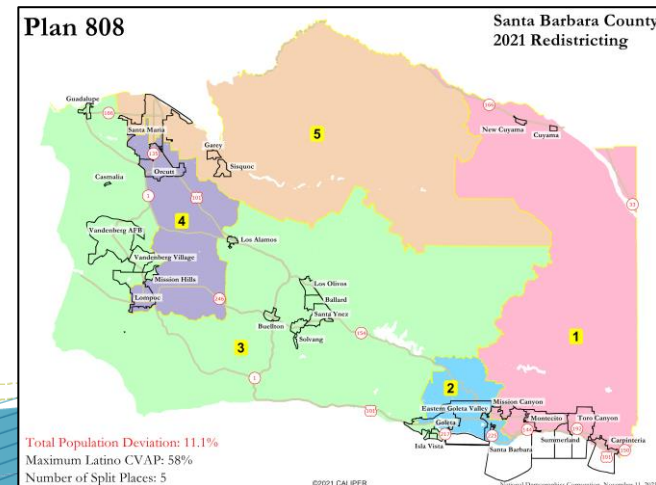
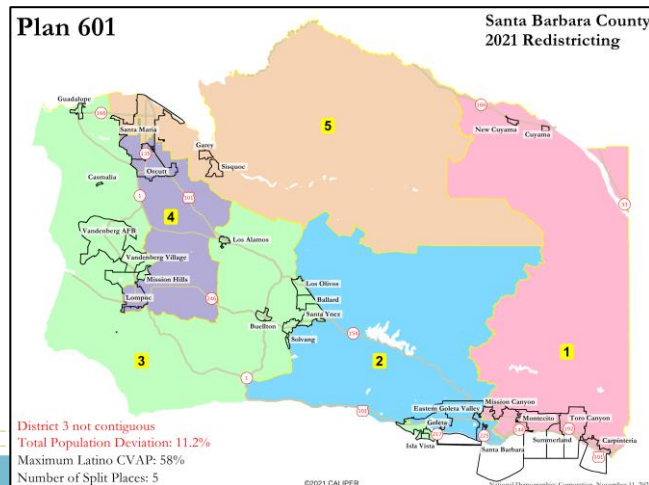
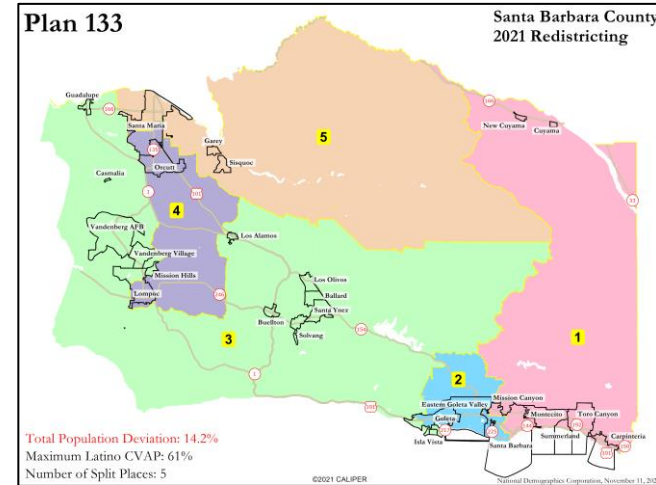
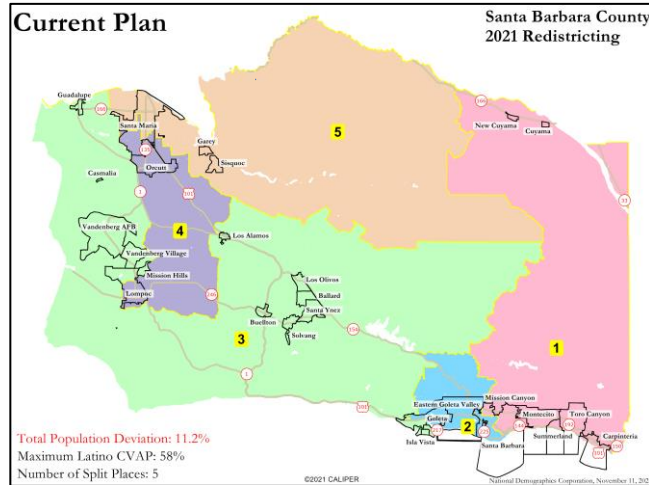
Group F: Guadalupe + Isla Vista

6 Plans



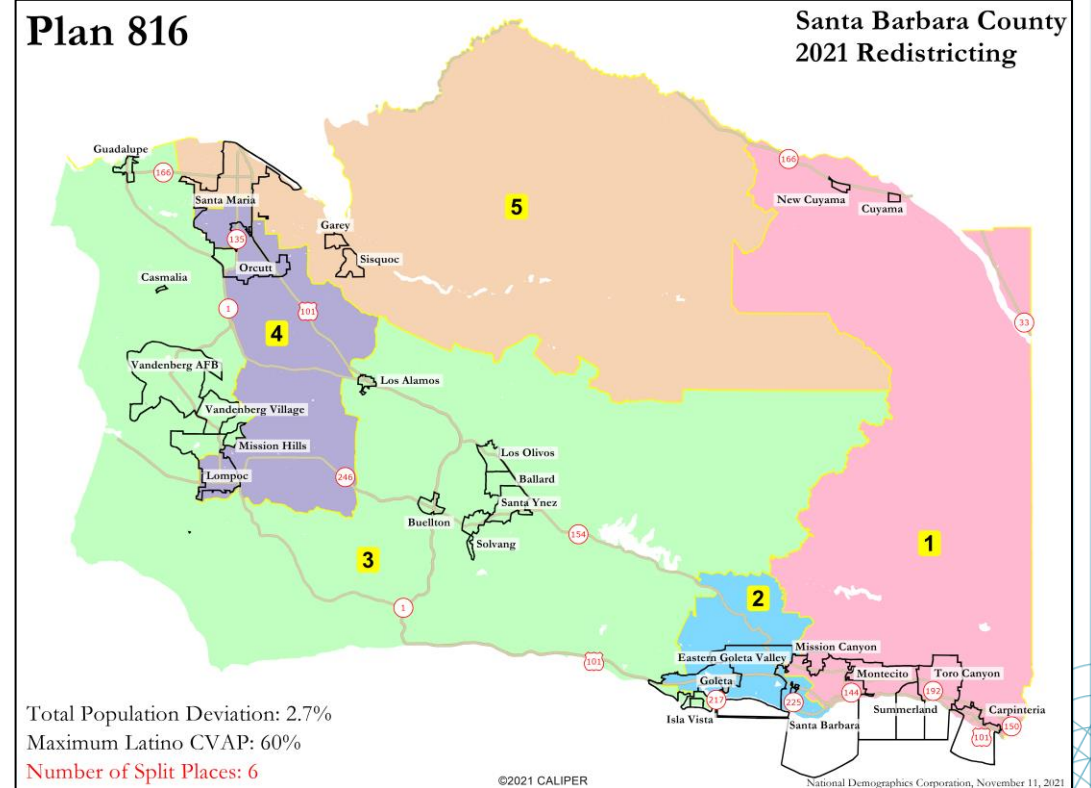
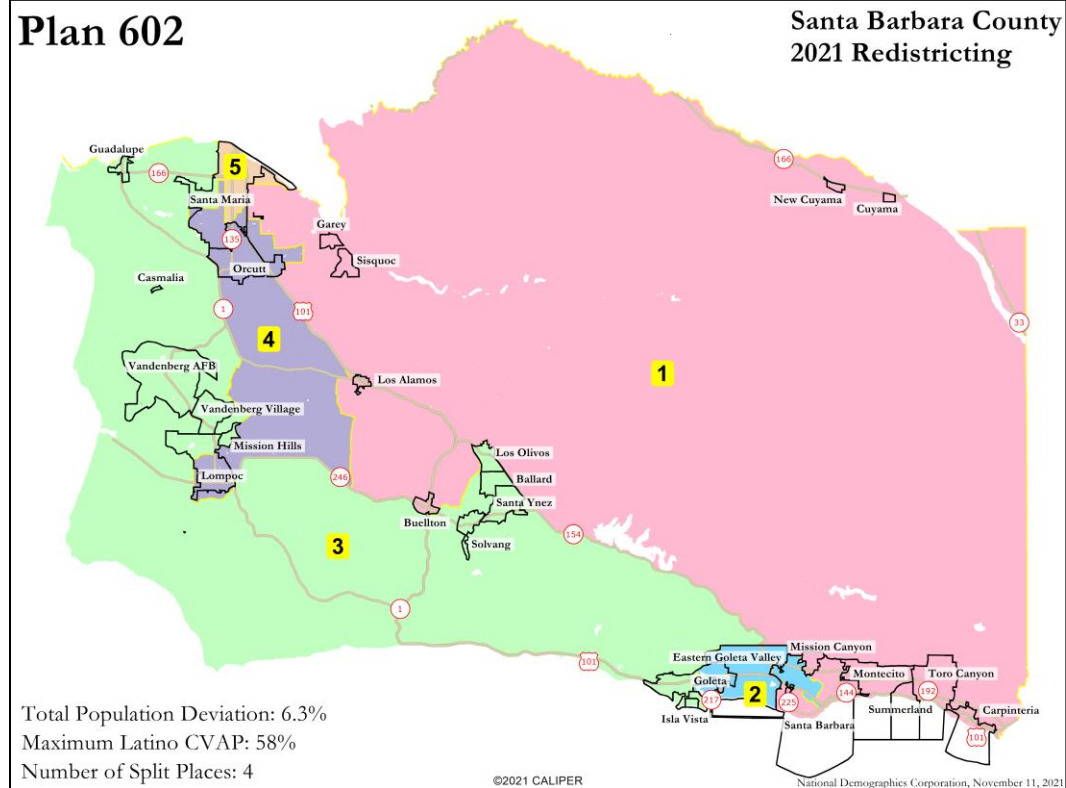
Subgroup 6: Isla Vista + Guadalupe

6 Plans, 4 of which are not population balanced



Subgroup 6: Isla Vista + Guadalupe

6 Plans, 2 of which remain



Public Hearing & Discussion

Questions about the proposed redistricting plans?

Is there a particular plan or plans from each subgroup that jumps out at you or that you want to focus on?

Please visit the [Interactive Review Map](#) on the View Draft Maps page on the website for a more detailed look at each draft plan

Please refer to the PDF postings on the View Draft Maps page for detailed demographics for each plan

At Thursday's Meeting:

Presentation of late-arriving DistrictR submissions (after 11/10) as well as 2 MOR submissions

Followed by Commission deliberations and identification of focus maps

Next Meeting

Thursday
November 18, 2021
12:00 p.m. to 2:00 p.m.

Virtual Only
Zoom ID 96627818457

DrawSantaBarbaraCounty.org