

From: [Steve Jordan](#)
To: [CEO Redistricting RES](#)
Subject: Map requests
Date: Thursday, November 18, 2021 9:25:58 AM

Caution: This email originated from a source outside of the County of Santa Barbara. Do not click links or open attachments unless you verify the sender and know the content is safe.

Maps **804, 404, 103, and 106**

Maps 804, 404, 103, and 106 please.

I am a Lompoc farmer and resident. Lompoc has much more in common with Goleta than IV. You have heard the residents complain about IV being in the north county. Your public outreach was consistent with that.

Please follow the comments. Follow the logic.

My roads have turned into third world hell roads. We have complained for years. We have the worst county roads in the county and the state. Absentee supervisors! My farm is west of Lompoc and nearest population is Buellton 20 miles east. The center of the third district is IV and no one cares about us. I pay taxes for potholes the size of manhole covers and 6 inches deep. People drive in the farms next to the paved county road to avoid the potholes!

Third world infrastructure! Every road turns into three roads. The center paved road with potholes and both sides dirt. People drive on the "smoothest" dirt road side. Is this anyway to run a government.

From: [Glenn Morris](#)
To: ["Todd Bodem"](#); [Karen Teibell](#)
Cc: [CEO Redistricting RES](#)
Subject: RE: Guadalupe Resolution Endorsing Redistricting Map
Date: Thursday, November 18, 2021 10:51:36 AM

Caution: This email originated from a source outside of the County of Santa Barbara. Do not click links or open attachments unless you verify the sender and know the content is safe.

Todd:

Glad to see the Council engaging and participating in this discussion!

You can send the resolution to Redistricting@CountyofSB.org and it will be added to the public record. We are meeting today, but our next meeting is Monday; if you can get the email in by 5pm tomorrow, it will be in Monday's packet. If not, the next meeting after that will be Dec 1.

Glenn Morris

SBC Citizens Independent Redistricting Commission
cell: 559.909.1012 | glenn.santamaria.com

From: Todd Bodem <tbodem@ci.guadalupe.ca.us>
Sent: Thursday, November 18, 2021 10:22 AM
To: Glenn Morris <glenn@santamaria.com>; Karen Teibell <karentwibell@cox.net>
Subject: Guadalupe Resolution Endorsing Redistricting Map

Hi Glenn and Karen:

The Guadalupe City Council Approved Resolution No. 2021-87, endorsing a proposed a map previously submitted to the Citizen Commission on Redistricting Supervisor Districts for Santa Barbara County. I am waiting for signatures from our Mayor and City Attorney.

Questions:

1. Where/who do we send the resolution?
2. What is the deadline?

Thanks,

Todd Bodem
City Administrator

From: [Scott Zimmerman](#)
To: [CEO Redistricting RES](#)
Subject: Maps redistricting
Date: Thursday, November 18, 2021 11:34:22 AM

Caution: This email originated from a source outside of the County of Santa Barbara. Do not click links or open attachments unless you verify the sender and know the content is safe.

Dear Commissioners,

I am writing in support of maps #804, 404, 103, and 106 to be considered for final adoption.

We want cities kept whole as possible and we do not want IV and UCSB placed into a North County District.

People residing in the IV area and those attending UCSB on what is most likely a short term basis should not have long lasting impact on those of us up to over an hour away from them. The consequences are too large and remain for years to follow. As one of those residents, urge you to support and adopt the maps referenced above.

Sincerely,

Scott Zimmerman

From: [Gianna Colombo](#)
To: [CEO Redistricting RES](#)
Subject: Plan 408B for Fair Representation: Santa Barbara County 2021 Redistricting
Date: Thursday, November 18, 2021 11:56:21 AM

Caution: This email originated from a source outside of the County of Santa Barbara. Do not click links or open attachments unless you verify the sender and know the content is safe.

Dear Redistricting Committee:

We have properties in both the 1st District (Montecito) and 3rd District (Los Olivos). I strongly encourage you to select Plan 408B during this unique opportunity to redraw district border lines. Plan 408B is a logical and a fair representation of the community members that live within each area. Our interests and lifestyle in Los Olivos are extremely different than any person living in Isla Vista.

Thank you for doing your civic duty as Commissioners. You will have the opportunity to make Santa Barbara County a more appealing place to live, especially to residents like us who are considering leaving California.

I will expect nothing less than a fair and honorable decision to accept Plan 408B.

Sincerely,

Gianna Colombo

From: [Raiza Giorgi](#)
To: [CEO Redistricting RES](#)
Subject: Request for Redistricting
Date: Thursday, November 18, 2021 12:38:34 PM

Caution: This email originated from a source outside of the County of Santa Barbara. Do not click links or open attachments unless you verify the sender and know the content is safe.

Dear Commissioners,

I am writing in support of maps #804, 404, 103, and 106 to be considered for final adoption.

We want cities kept whole as possible and we do not want IV and UCSB placed into a North County District.

Kind regards,
Raiza Giorgi
Gaviota
805-350-8786

From: [Mark Teixeira](#)
To: [CEO Redistricting RES](#)
Subject: FW: Redistricting Email
Date: Thursday, November 18, 2021 1:15:58 PM

Caution: This email originated from a source outside of the County of Santa Barbara. Do not click links or open attachments unless you verify the sender and know the content is safe.

Commissioners,

I would like to encourage you to consider redistricting plans 804, 404, 103, and 106 for final adoption.

Community members need more balanced representation on the board of supervisors. Unfortunately, as is, some areas get prioritized more than others. In district 3, for example, decisions made by the supervisor are heavily influenced by votes coming out of Isla Vista. These votes, in large part, come from temporary residents who do not have longevity and loyalty to their community, nor do the voters deeply care about or fully understand the impacts of their votes on those of us who do have longevity and loyalty to our community.

Redistricting needs to keep communities as whole as possible and keep the votes of Isla Vista and UCSB in south county. North county districts are predominately rural agriculture. When their voices become overshadowed by a smaller yet densely populated area, it inhibits the agriculture industry's ability to support the economic vitality of the entire county. When farmers are successful, our communities thrive. The aforementioned maps provide opportunity for fair economic growth and development for all residents and industries.

Sincerely,

Mark Teixeira

From: [Juana Escobar](#)
To: [CEO Redistricting RES](#)
Cc: [Todd Bodem](#)
Subject: Resolution No. 2021-87 (City of Guadalupe)
Date: Thursday, November 18, 2021 1:18:56 PM
Attachments: [Resolution No. 2021-87 Endorsing Proposed Map 801 to the Citizens Independent Redistricting Commission 11-17-2021.pdf](#)
Importance: High

Caution: This email originated from a source outside of the County of Santa Barbara. Do not click links or open attachments unless you verify the sender and know the content is safe.

Good afternoon,

Attached please find a signed copy of Resolution No. 2021-87 approved by the Guadalupe City Council endorsing proposed Map 801 to the Santa Barbara County Citizens Independent Redistricting Commission.

Should you have any questions, please feel free to contact me at 805.356.3891.

Thank you

Juana M. Escobar
Administrative Assistant
City of Guadalupe

805.356.3891 office
805.343.5512 fax

RESOLUTION NO. 2021-87

**A RESOLUTION OF THE CITY COUNCIL OF THE CITY GUADALUPE
ENDORISING PROPOSED MAP 801 TO THE CITIZENS INDEPENDENT REDISTRICTING COMMISSION**

WHEREAS, at a special City Council meeting held on November 17, 2021, the Council deliberated on some of the proposed maps for new districts for individual supervisors of the Santa Barbara County Board of Supervisors that had been submitted to the Citizens Independent Redistricting Commission; and

WHEREAS, after receiving input from members of the public and completing its deliberations, the City Council selected a proposed map as the redistricting map that would best serve the residents of the City of Guadalupe.

NOW, THEREFORE, BE IT RESOLVED, by the City Council of the City of Guadalupe that Map No. xxx will best serve the residents of the City of Guadalupe and the Council endorses this map and directs that this Resolution be provided to the Citizens Independent Redistricting Commission.

PASSED, APPROVED AND ADOPTED at a special meeting on the 17th day of November 2021 by the following vote:

MOTION: **TONY RAMIREZ / LILIANA CARDENAS**

AYES:	4	Councilmembers:	Ramirez, Cardenas, Julian, Robles
NOES:	1	Councilmembers:	Costa Jr.
ABSENT:	0		
ABSTAIN:	0		

I, Amelia M. Villegas, City Clerk of the City of Guadalupe DO HEREBY CERTIFY that the foregoing Resolution, being **Resolution No. 2021-87** has been duly signed by the Mayor and attested by the City Clerk, all at a special meeting of the City Council, held November 17, 2021, and that same was approved and adopted.

ATTEST:


Amelia M. Villegas, City Clerk


Ariston Julian, Mayor

APPROVED AS TO FORM:


Philip Sinco, City Attorney

From: lacy@teixeirafarms.com
To: [CEO Redistricting RES](#)
Subject: Redistricting Maps for Consideration
Date: Thursday, November 18, 2021 2:53:06 PM

Caution: This email originated from a source outside of the County of Santa Barbara. Do not click links or open attachments unless you verify the sender and know the content is safe.

Commissioners,

I would like to encourage you to consider redistricting plans 804, 404, 103, and 106 for final adoption.

Community members need more balanced representation on the board of supervisors. Unfortunately, as is, some areas get prioritized more than others. In District 3, for example, decisions made by the supervisor are heavily influenced by votes coming out of Isla Vista. These votes, in large part, come from temporary residents who do not have longevity and loyalty to their community, nor do the voters deeply care about or fully understand the impacts of their votes on those of us who do have longevity and loyalty to our community.

Redistricting needs to keep communities as whole as possible and keep the votes of Isla Vista and UCSB in south county. North county districts are predominately rural agriculture. When their voices become overshadowed by a smaller yet densely populated area, it inhibits the agriculture industry's ability to support the economic vitality of the entire county. When farmers are successful, our communities thrive. The aforementioned maps provide opportunity for fair economic growth and development for all residents and industries.

Respectfully,

Lacy Litten

Teixeira Farms

O: (805) 928-3801

C: (805) 801-7032

From: [Landon Stableford](#)
To: [CEO Redistricting RES](#)
Subject: Re districts
Date: Thursday, November 18, 2021 4:47:13 PM

Caution: This email originated from a source outside of the County of Santa Barbara. Do not click links or open attachments unless you verify the sender and know the content is safe.

SNAFU

Sent from my iPhone

From: [Larry Lahr](#)
To: [CEO Redistricting RES](#)
Subject: Comments on proposed redistricting maps
Date: Thursday, November 18, 2021 7:24:58 PM

Caution: This email originated from a source outside of the County of Santa Barbara. Do not click links or open attachments unless you verify the sender and know the content is safe.

Dear Commissioners,

I have reviewed the maps submitted to you. I believe that cities should be kept whole whenever possible and that it is highly inappropriate for Isla Vista and UCSB to be a part of a district located in the North County. Therefore I support maps #804, 404, 103, and 106 to be considered for final adoption.

Larry Lahr, President
Rincon Corporation
DRE #00935487



www.rinconcorp.com

Orcutt Office:
185 South Broadway, Suite 102
Orcutt, CA 93455

Mailing Address:
P.O. Box 1949
Buellton, CA 93427

Phone: 805-937-2492

Cell: 805-896-4605

From: [Jim Bray](#)
To: [CEO Redistricting RES](#)
Subject: Fwd: Concern about eliminating votes from maps receiving 3
Date: Thursday, November 18, 2021 7:53:07 PM

Caution: This email originated from a source outside of the County of Santa Barbara. Do not click links or open attachments unless you verify the sender and know the content is safe.

-----Original Message-----

From: fromero@solutions-plus.net
To: Jim Bray <jimdenbray@verizon.net>
Sent: Thu, Nov 18, 2021 3:45 pm
Subject: Concern about eliminating votes from maps receiving 3

Jim,

Just my opinion. Why combine some & not others? Either all the 3's go or they should stay. There is a weighting of the votes based on how this is going.

Frances

Cell 805.720.1120
Frances Romero
237 Town Center West #156
Santa Maria, CA 93458

From: terisue.harmon@gmail.com
To: [CEO Redistricting RES](#)
Subject: common sense please
Date: Thursday, November 18, 2021 9:24:43 PM

Caution: This email originated from a source outside of the County of Santa Barbara. Do not click links or open attachments unless you verify the sender and know the content is safe.

Dear Commissioners,

I am writing in support of maps #804, 404, 103, and 106 to be considered for final adoption.

I believe cities should be kept whole wherever possible and I do not want believe it is appropriate, pursuant to current legal redistricting guidelines, to give any consideration for placing IV and UCSB into a North County District. Should that decision be made I believe it is highly likely that legal action will be taken to challenge the newly drawn supervisory districts...not to mention the redistricting smacks of gerrymandering strictly for political purposes and not what is in best interest of the citizens on both sides of the mountain.

Do what you know redistricting guidelines require and place IV and UCSB in a south county supervisorial district.

Sincerely,

Teri Harmon

P.O. Box 1800

Santa Ynez, CA 93460

805-688-6776

805-693-8842 fax

Terisue.harmon@gmail.com

From: [Ron Rogers](#)
To: [CEO Redistricting RES](#)
Cc: [Caldwell, Andy](#); [Edith Robinson](#); [Ned Oakley](#); [Netta Jones](#); [Richard Jenks](#); [Shirley Olsen](#); [Bill Pattee](#); [Betsy Sansby](#)
Subject: Re-Districting Maps
Date: Thursday, November 18, 2021 2:29:38 PM

Caution: This email originated from a source outside of the County of Santa Barbara. Do not click links or open attachments unless you verify the sender and know the content is safe.

To the committee making the decision on which re-districting map to use in the future, I strongly suggest you select map #106. I have long objected that the Santa Ynez Valley be directly linked to the student population of UCSB and Isla Vista. We have absolutely nothing in common with each other. I have copied my friends living here in the Valley and would hope they support my views.

<https://drawsantabarbaracounty.org/view-draft-maps/>

Ronald W Rogers
Buellton, CA 93427
805-686-2090
ronnpat@verizon.net

From: [betsy sansby](#)
To: [Ron Rogers](#)
Cc: [CEO Redistricting RES](#); [Caldwell, Andy](#); [Edith Robinson](#); [Ned Oakley](#); [Netta Jones](#); [Richard Jenks](#); [Shirley Olsen](#); [Bill Pattee](#)
Subject: Re: Re-Districting Maps
Date: Thursday, November 18, 2021 11:14:26 PM

Caution: This email originated from a source outside of the County of Santa Barbara. Do not click links or open attachments unless you verify the sender and know the content is safe.

I am a SY resident and I agree. we should be using the District 106 map. It more clearly represents our residents. We are rural folks. Not Santa Barbarbarians!

[Betsy Sansby](#), MS, LMFT

952-221-6752
BetsySansby.com

On Nov 18, 2021, at 2:29 PM, Ron Rogers <ronnpat@verizon.net> wrote:

To the committee making the decision on which re-districting map to use in the future, I strongly suggest you select map #106. I have long objected that the Santa Ynez Valley be directly linked to the student population of UCSB and Isla Vista. We have absolutely nothing in common with each other. I have copied my friends living here in the Valley and would hope they support my views.

<https://drawsantabarbaracounty.org/view-draft-maps/>

Ronald W Rogers
Buellton, CA 93427
805-686-2090
ronnpat@verizon.net

From: [Gerardo Ayala](#)
To: [CEO Redistricting RES](#)
Subject: In support of map 818
Date: Thursday, November 18, 2021 11:15:30 PM

Caution: This email originated from a source outside of the County of Santa Barbara. Do not click links or open attachments unless you verify the sender and know the content is safe.

Dear Members of the Redistricting Commission,

My name is Gerardo Ayala and I have lived in Santa Barbara County almost my whole life. I am emailing to express my support for map 818 to be adopted.

As someone from a Latino family and community, I am particularly sensitive to the ways in which Latinx people have been disempowered by the political structures here. I think it's very important that there be a strong Latinx majority district and the most logical place for that is district 5, combining the communities of Guadalupe and the western portion of the city of Santa Maria. If Guadalupe is put with Orcutt there is a great risk of racially polarized voting which would cancel out the power that Latinx voters need to have under the Voting Rights Act.

I also think that connecting Lompoc with Isla Vista and the western portion of Goleta makes sense since those are working class and renter heavy communities. I have been a renter my whole life and come from a working class family and I understand the political ramifications of this all too well, especially as the housing crisis only gets worse.

It's an additional advantage that the newly drawn third district keeps the Santa Ynez Valley connected to the coastline because this is something that really matters to the Santa Ynez Tribe of the Chumash people.

I know that some people think it is bad to split a city, but I have lived in Santa Barbara for decades with two supervisors and this has worked very well for us. There are two different offices we can go to if we have needs.

I also think it's important that the first district continue to connect Carpinteria with the east and west sides of Santa Barbara since those are strong communities of interest. I have lived on both the east and west sides and have many connections to Carpinteria. That's another reason I support map 818.

Thank you for your consideration.

Gerardo Ayala
Santa Barbara CA

Gerardo Ayala
805.284.5905
gera@heddaproductions.com

From: [Margaret Lazarus](#)
To: [CEO Redistricting RES](#)
Subject: Redistricting comment
Date: Friday, November 19, 2021 6:50:47 AM

Caution: This email originated from a source outside of the County of Santa Barbara. Do not click links or open attachments unless you verify the sender and know the content is safe.

Dear commissioners,

Now that you have boiled down 100 maps to 10 for consideration, I would like to share my support for map 818.

It seems to me that two things are important here: to support and empower racial minorities, while causing a minimum of disruption to voters as a whole. I believe that map 818 accomplishes this best.

This map creates a new fifth district that unites Guadalupe with western Santa Maria, empowering working class and farmworkers Latinx residents and ensuring them more voting power than they have ever had. It also keeps the Chumash connected to the coastline that matters to them, and they were here long before we were.

Although it makes some changes, map 818 is less disruptive than many of the maps you are considering and is likely to change the voting schedule of the fewest number of people. This is also very important.

For these reasons I hope you will support map 818.

Thank you for your consideration,

Margaret Lazarus
Santa Barbara

Sent from my iPhone

From: [Joyce Howerton](#)
To: [CEO Redistricting RES](#)
Subject: Map
Date: Friday, November 19, 2021 9:02:36 AM

Caution: This email originated from a source outside of the County of Santa Barbara. Do not click links or open attachments unless you verify the sender and know the content is safe.

I would like to add my voice to the many Santa Barbara County residents who support map 818.

I have been very involved with the redistricting process for the past 30 years and I think by far map 818 is the fairest for all county residents.

Reasons:

I support splitting the city of Lompoc because it is a unique community, isolated from other cities and needs the support and attention of two supervisors.

It empowers minority communities, both by connecting Guadalupe to western Santa Maria and by keeping the Chumash tribes connected to the coast line that they are so long associated with.

I think that fewer changes rather than more are in the best interests of Santa Barbara County residents. It will be less confusing, and easier to accept.

I understand the heavy load you all carry and wish you the best in your work.

Joyce Howerton, former mayor of Lompoc

From: [Janice Battles](#)
To: [CEO Redistricting RES](#)
Subject: Districting maps
Date: Friday, November 19, 2021 10:28:42 AM

Caution: This email originated from a source outside of the County of Santa Barbara. Do not click links or open attachments unless you verify the sender and know the content is safe.

Please consider Map # 404, 103, 106, and 103 for redistributing. I prefer Northern county I to be free of UCSB in the northern district.

Thank you.

Janice Battles

Santa Maria

Sent from my iPhone

From: [Ruth Johnson](#)
To: [CEO Redistricting RES](#)
Subject: Redistricting Map 818
Date: Friday, November 19, 2021 12:02:10 PM

Caution: This email originated from a source outside of the County of Santa Barbara. Do not click links or open attachments unless you verify the sender and know the content is safe.

Dear members of the commission,

I spoke in front of you recently and I am now emailing to express my support for map 818.

I currently live in western Goleta and in the past have lived in Santa Barbara. Map 818 preserves the districts that have worked for us in the south county. It also improves the third district by connecting less empowered residents of Lompoc with the eastern coastal portion of the current district.

I realize that there are people in the Santa Ynez Valley who do not like being with Isla Vista but there needs to be more population in that district and creating one huge all rural district would be very difficult for a supervisor to serve. It would also fail to be compact which is one of the criteria you are supposed to be considering.

I also think that the newly drawn fifth district is a better reflection of the relationships between Guadalupe and the bulk of Santa Maria and would better serve as a majority minority district.

Thank you,

Ruth Johnson
Goleta

From: [Martie Levy](#)
To: [CEO Redistricting RES](#)
Subject: Redistricting Map
Date: Friday, November 19, 2021 12:11:47 PM

Caution: This email originated from a source outside of the County of Santa Barbara. Do not click links or open attachments unless you verify the sender and know the content is safe.

Dear Commission Members,

I am a long time resident of the South Coast, and I am concerned that we end up with supervisorial districts that best represent the various communities in our county. That's why I support map 818 and hope you will also.

Map 818 does some important new things: it enhances minority voting power with its 5th District; it honors the Chumash connection between the Santa Ynez Valley and the Gaviota Coast; and it links working/renter residents of Lompoc with their counterparts on the south coast.

Map 818 also retains some important elements of the current districts: it keeps most of the 1st and 2nd Districts as is, which works well, as those districts have strong communities of interest. It keeps Cuyama in the 1st District, which many residents do like, as they have so much in common with parts of that district, especially around water and agriculture. And from my perspective, it doesn't make unnecessary changes. This process is already disruptive enough to voters, who often find local/regional politics confusing. The less we confuse them, the more likely they are to participate!

Thank you for your consideration of my comments.

Sincerely,

Martha Levy
Santa Barbara CA

From: [Brian Ross Adams](#)
To: [CEO Redistricting RES](#)
Subject: District 3
Date: Friday, November 19, 2021 2:12:06 PM

Caution: This email originated from a source outside of the County of Santa Barbara. Do not click links or open attachments unless you verify the sender and know the content is safe.

Dear Commission,

I have lived in Los Alamos for the past 2 years and have been very glad to be a part of District 3.

Isla Vista and the Santa Ynez Valley have been in the 3rd District for decades and should remain.

The valley's small rural communities, lack Los Alamos, lack the population numbers to be their own district; those numbers have to be boosted by some urban population source, and it has to be geographically contiguous as noted above.

Isla Vista and the Valley work together perfectly in that important way.

Thank you.

Brian Ross Adams
(310) 592-1799
www.TrustedMessengerMarketing.com

From: [Lata Murti](#)
To: [CEO Redistricting RES](#)
Subject: public comment for Nov. 22 CIRC meeting
Date: Friday, November 19, 2021 2:39:54 PM

Caution: This email originated from a source outside of the County of Santa Barbara. Do not click links or open attachments unless you verify the sender and know the content is safe.

Dear Chair Morris and Commissioners:

As you embark on the difficult task of narrowing down maps to select the single, best choice for Santa Barbara County, I would like to draw your attention again to Maps 801c and 818. Thank you for including both in your final ten maps.

Both 801c and 818 redraw County district lines for stronger Latinx representation in North County, by joining Guadalupe with Western Santa Maria in the fifth district. At the same time, Map 818, in particular, would lead to the least disruption to current districts in South County, thereby maintaining communities of interest, their political representation, and their voting schedules.

Map 818 does reverse districts for the mid-County city of Lompoc so that most of the city would be in District 3 while Vandenberg Air Force Base and North Lompoc are in District 4. However, this change better reflects current communities of interest while giving Lompoc residents the opportunity to be represented by two County Board of Supervisors, not just one. Meanwhile, with Map 818, Buellton and the Santa Ynez Valley would remain in District 3, meaning that they too, like South County, would maintain their communities of interest, political representation, and voting schedules.

Overall, Map 818 balances necessary change with a quite functional status quo so that all Santa Barbara County residents may experience fair and equal representation at the county level. I hope that both Map 818 and 801c are included in your next round of 4-5 maps.

Thank you very much.

Warmly,
Dr. Lata Murti

From: [Gabe Escobedo](#)
To: [CEO Redistricting RES](#)
Subject: County of Santa Barbara Redistricting Map Public Comment
Date: Friday, November 19, 2021 2:48:06 PM

Caution: This email originated from a source outside of the County of Santa Barbara. Do not click links or open attachments unless you verify the sender and know the content is safe.

Hello Commissioners,

I ask that you support map 818. Of all of the draft maps, map 818 is the best compromise that enhances the political power of historically underrepresented residents while also avoiding the movement of large populations to new districts.

This map keeps Carpinteria, the city with the largest Latinx population on the South Coast, with similar Latinx majority neighborhoods in the city of Santa Barbara – the Eastside and Westside. For the same reasons, it is important that map 818 combines Guadalupe with western Santa Maria. As a Chicano that lives on the Eastside of Santa Barbara, this map ensures our community has a voice in our representation.

For these reasons, I ask that you please support map 818.

Thank you so much for your work on this critical work effort.

Best,
Gabe Escobedo

Gabriel "Gabe" Escobedo, M.A.
He|Him|His
E: Gabe.Escobedo@outlook.com

From: [Sharon Broberg](#)
To: [CEO Redistricting RES](#)
Subject: Support Map #818
Date: Friday, November 19, 2021 3:00:17 PM

Caution: This email originated from a source outside of the County of Santa Barbara. Do not click links or open attachments unless you verify the sender and know the content is safe.

Dear Redistricting Commission,

I am emailing in support of map #818. To me, it best represents our county's needs and population.

The south county should not undergo significant changes; our current first and second districts make sense and serve our communities well. For example, I think it's important that Carpinteria remain connected to Santa Barbara's east and west sides, as we have a lot in common as renters with a large Latino/a population. I also think it's important that the 3rd District continues to connect the Santa Ynez Valley with the south coast, as it is the 'bridge' district for many reasons, including the Chumash having a long history on both sides of the mountains!

Where 818 is superior to the current districts is how it strengthens minority representation in the 5th District, and where it connects Lompoc to communities on the south coast with which it has a lot in common, like IV/UCSB and western Goleta. This will strengthen those communities, which are too often left less powerful by virtue of their racial and socioeconomic conditions.

Thank you,

Sharon Broberg
Eastside of Santa Barbara

From: [Pamela Wilkinson](#)
To: [CEO Redistricting RES](#)
Subject: Comments on redistricting - support maps 818 and 816B
Date: Friday, November 19, 2021 3:01:21 PM

Caution: This email originated from a source outside of the County of Santa Barbara. Do not click links or open attachments unless you verify the sender and know the content is safe.

Dear Commissioners,

Please support maps 818 and 816B getting into the next round of map selection.

I favor these maps because they don't make too many changes, especially 816B. It seems to me to follow the best 'do no harm' approach to redistricting.

However, I also see the value of what map 818 accomplishes, as it connects communities that have historically been separated and disempowered, like Guadalupe with Santa Maria and Lompoc with the western Goleta/IV area.

Please do not make changes that move too many people around and disrupt voting patterns, as this will suppress voter participation.

Thank you,
Pamela Wilkinson

From: [Andrea Jackson](#)
To: [CEO Redistricting RES](#)
Subject: Redistricting Commission
Date: Friday, November 19, 2021 3:07:06 PM

Caution: This email originated from a source outside of the County of Santa Barbara. Do not click links or open attachments unless you verify the sender and know the content is safe.

To whom it may concern,

I am a resident of the Santa Ynez Valley, located in Santa Barbara County's Third District. I grew up in the Santa Ynez Valley in a family that has lived here for generations. My experiences living in both the Santa Ynez Valley and Santa Barbara, where I spent time in Isla Vista, have informed my opinion that these areas belong together in the Third District of Santa Barbara County, and I would like to see the Third District preserved to as close a configuration to what it is currently as possible. The low population of the Santa Ynez Valley means that this area must join with geographically contiguous urban areas to boost population numbers to the point of forming an acceptable district. Because the Santa Ynez Valley and Isla Vista have been in the Third District together for decades, in my opinion, it only makes sense to continue governing these areas at the County level jointly. Both areas have small many special districts/community services districts that provide services, which rely on County support for implementation of projects. These areas would be best served with County support by remaining as they have been – in the Third District. Thank you for your consideration.

Sincerely,
Andrea Jackson

From: [Nancy DuVall](#)
To: [CEO Redistricting RES](#)
Subject: Please keep our cities whole.
Date: Friday, November 19, 2021 3:19:01 PM

Caution: This email originated from a source outside of the County of Santa Barbara. Do not click links or open attachments unless you verify the sender and know the content is safe.

Sincerely,

Nancy DuVall
13940 Spring Meadow Ln, Atascadero, CA 93422
Atascadero, CA 93422

Dear Commissioners,

I am writing in support of maps #804, 404, 103, and 106 to be considered for final adoption.

We want cities kept whole as possible and we do not want IV and UCSB placed into a North County District.

From: [Lee Heller](#)
To: [CEO Redistricting RES](#)
Subject: comments for Mon. 11/22/21
Date: Friday, November 19, 2021 3:25:37 PM

Caution: This email originated from a source outside of the County of Santa Barbara. Do not click links or open attachments unless you verify the sender and know the content is safe.

Dear Chair Morris and Members of the Commission,

I try not to submit too many written comments, saving them for the 'live' event, but given that you will be making decisions before Monday night, I wanted to share my thoughts with you.

As I have said, in general I am opposed to unnecessary changes in the district maps. That's why I have repeatedly opposed changing the numbering system, as it is likely to confuse and disenfranchise voters. It's also why I favor maps 816B and 818.

What I like about 816B is that it does, what I think Commissioner Bradley referred to as "the least harm." It correct population imbalances and keeps district lines pretty near to where they are. To me, this approach makes sense to prevent too much disruption to voting schedules. Presumably this approach would involve 'moving' the fewest number of voters.

However, 818 does a better job of creating stronger communities of interest that have traditionally been less empowered in elections. You've heard this many times, but I will reiterate: Guadalupe and western Santa Maria as a combined district will strengthen minority representation. That's why the Guadalupe City Council voted to support this approach. I do understand those who oppose what they are calling "the CAUSE map" - they do not understand that dispersing Latinx voters actually hurts them by diluting their vote in each district. Indeed, having Guadalupe in the 4th District may well result in the kind of racially polarized voting that you are obligated to avoid if at all possible.

818 does something interesting and valuable with the densely populated, more Latinx and working class parts of Lompoc: it puts those with south coast communities that share demographics. This is much less of a stretch, in terms of compactness and contiguity, than trying to connect Lompoc to Guadalupe, for example. It puts the Lompoc Valley with the more white/middle class/agricultural interests of Orcutt and related communities. It keeps the Santa Ynez Valley whole. And it connects the traditional Chumash inland and coastal territories, something that the band's letter makes clear is very important to them.

For those in Lompoc who think it's bad to split a city -- I have lived in Santa Barbara and/or Summerland for 25 years, and it's been great to have two supervisors. We get double the bang for our buck, as two supervisors are beholden to us as voters, and interested in our needs. It also provides an opportunity for different populations to elect supervisors with different viewpoints, something that folks in Lompoc, which is pretty politically diverse, should value and benefit from.

818 keeps most of the south county districts roughly as-is, and that is important, as these districts reflect the connections between communities of interest here.

I will say, AGAIN -- it's nearly impossible to draw districts that only reflect one political point of view or community of interest. If you try, you end up with the huge, unwieldy 4th District in map 821B, for example. Contiguity and compactness requirements mean that there will be diverse voices in any given district. The VRA does not require or expect districts that contain only a single point of view. So those who are emailing and speaking to say that they do not 'want' Isla Vista in the same district as the Valley, for example, do not understand how electoral districts function. It's unfortunate that they do not, as they will continue to be dissatisfied, but the reality is that we have diverse districts at every level, from cities to assembly and senate to our congressional district(s). The only alternative is illegal gerrymandering, which is illegal for a reason.

Finally, I want to thank you ALL for all your hard work this past year. I try not to take up public comment time on this, but I do realize just how hard you are all working, reading comments, looking at maps, attending so many meetings, and more. Your service is a gift to us all, and I am grateful!

Warm regards,

Lee E. Heller, Ph.D. J.D.
Santa Barbara CA

From: [Erica A. Reyes](#)
To: [CEO Redistricting RES](#)
Subject: Public Comment - Erica Reyes
Date: Friday, November 19, 2021 3:26:42 PM

Caution: This email originated from a source outside of the County of Santa Barbara. Do not click links or open attachments unless you verify the sender and know the content is safe.

Dear Chair Morris and Members of the Redistricting Commission,

Foremost, I would like to thank you all for the work that you all have done throughout the redistricting process. It is fundamental to our democratic process that we have an independent and fair redistricting process that results in districts that reflect the true political will of our diverse communities. Too often we have experienced the result of gerrymandered districts that seek to further marginalize communities of color and the economically disadvantaged. I am hopeful that the work that you have done over the course of the last few months will result in districts that are representative and fair.

As a resident of the current second district and a former resident of the first district, I recognize the importance of maintaining the connections between the westside and the eastside with Carpinteria. These Latine, working-class, renter-heavy communities have more political power if kept together. Some of the proposed maps want to change that, but map 818 preserves these important connections.

I know there are mixed feelings about Cuyama. The residents I have spoken with feel that they are benefited from staying in the First District because of the groundwater issues that they have in common with other communities that have GSAs. It's such a long drive for them to any other populated area it makes little difference if they are in the First or the Fifth District.

Likewise, I think it is important to keep the Santa Ynez Valley connected with the coastline as was requested by the letter from the Chumash tribe. We should respect the views of the people who have been here longer than any of us. I realize that they asked to keep the current map but that is not likely.

The other really important reason that I support map 818 is that it improves connections between communities of interest in Central and North County. Moving the densest portion of Lompoc into the third district makes sense because of the commonalities with residents of Isla Vista and western Goleta. It also creates a fifth district that would strengthen the voting power of my community, Latine community members. It's been apparent for too long that that power has been diluted and would certainly continue to be weakened if it were placed with Orcutt where racially polarized voting is all too likely.

Thank you for your attention and consideration and for all the work you have and continue to do on a fair redistricting process.

Regards,

Erica Reyes
Santa Barbara

Erica A. Reyes
reyesericaa@gmail.com | (805) 705-7621

From: [Janice Keller](#)
To: [CEO Redistricting RES](#)
Subject: Comments to Consider re. Redistricting
Date: Friday, November 19, 2021 3:26:43 PM
Attachments: [Letter re redistricting.docx](#)

Caution: This email originated from a source outside of the County of Santa Barbara. Do not click links or open attachments unless you verify the sender and know the content is safe.

Please include this letter in the packet for the upcoming Citizens Independent Redistricting Commission meeting. Thank you.

Janice Keller
P.O. Box 504
Lompoc, CA 93438-0504
(805) 291-9777
jkeller2002@msn.com

November 19, 2021

Commission Members
Santa Barbara County Citizens Independent Redistricting Commission

Dear Commissioners:

I have been a Lompoc City resident since October 1988. Prior to that, I lived in the southern portion of Santa Barbara County for over 20 years. During my years in Lompoc, I have served as a City Councilmember, a Planning Commissioner, and a Human Services Commission. I also was a County employee for 13 ½ years. I am well aware of the issues the City faces independently and as a part of the larger Santa Barbara County community.

One of the issues the Citizens Independent Redistricting Commission faces is whether to keep the City of Lompoc in one supervisorial district or allow it to be divided between two districts. The same issue extends to the communities of Mission Hills, Mesa Oaks and Vandenberg Village. As you are well aware, these communities have been both unified and divided in the past. I strongly believe that there has been no significant disadvantage to these communities by being divided.

Therefore, the City of Lompoc and the rest of the Lompoc Valley do not have to be in the same supervisorial district. Lompoc is a racially, culturally, and politically diverse community. It makes sense that the southern portion of Lompoc be in the same district as Isla Vista and Western Goleta as they share the same communities of renters, LatinX, and working class populations.

Please give my thoughts consideration during your upcoming deliberations.

Sincerely,

Janice Keller

From: [Constance Penley](#)
To: [CEO Redistricting RES](#)
Subject: public comment
Date: Friday, November 19, 2021 3:32:52 PM

Caution: This email originated from a source outside of the County of Santa Barbara. Do not click links or open attachments unless you verify the sender and know the content is safe.

Dear Chair and Commissioners,

I am emailing to express my support for maps 818 and 816B.

I am a long-time professor at UCSB and have a very well-developed sense of the University and its surrounding community. I urge you to support a map that maintains Isla Vista and UCSB as a community of interest and keeps it in the 3rd District, with western Goleta. This works well for our population. 818 has the added advantage of connecting our minority and renter communities with those in Lompoc, which would strengthen them both. It would also keep the Santa Ynez Valley with the Gaviota Coast, which is a critical intersection for the Santa Ynez Tribe of the Chumash. Their letter was very persuasive to me on that point. It also strengthens minority voices in the 5th District.

816B is a good map if you elect to go with the least changes, and work on minor variations on the status quo.

I know this is a difficult process, but I urge you to adopt a map that maintains our current strengths and adds to them with the changes described above.

Thank you for your consideration.

Constance Penley
Goleta

From: [elizabeth farnum](#)
To: [CEO Redistricting RES](#)
Subject: Re-districting criteria
Date: Friday, November 19, 2021 3:37:20 PM

Caution: This email originated from a source outside of the County of Santa Barbara. Do not click links or open attachments unless you verify the sender and know the content is safe.

Re-Districting Commissioners,

I am writing in support of the following principles to consider when choosing a new map for Santa Barbara County.

1. Having heard the consultant's presentation at the November 12th meeting, I believe that compliance with the Voting Rights Act means putting Guadalupe and a majority of Santa Maria in one district.
2. Having worked for the county in various capacities including constituent service for county supervisors, I believe there is value in minimizing changes to district boundaries. This allows for continuity in work projects, and for building relationships in the community. Many projects, particularly infrastructure, take years to complete and staff familiarity with the background and goals optimizes the outcome of these projects.
3. Finally, the third district has historically included the Santa Ynez Valley, the Gaviota Coast, and Isla Vista. Within this area the different communities also have their own Community Service Districts and in two cases their own city governments. A largely rural area, with the largest number of folks living in unincorporated areas, the third District has a particular sort of identity and supervisorial history. Finally, although the Santa Ynez Band of Chumash are a sovereign nation, the band is an important part of the third district and retains cultural connections to the coast.

I believe Map 818 embodies these principles with the highest (except for map 809) CVAP, very acceptable population deviation, and acceptable number of "splits".

Thank you for your work.

Elizabeth Farnum

From: [Rennah Al-Naser](#)
To: [CEO Redistricting RES](#)
Subject: Redistricting SB county
Date: Friday, November 19, 2021 3:45:19 PM

Caution: This email originated from a source outside of the County of Santa Barbara. Do not click links or open attachments unless you verify the sender and know the content is safe.

Dear Commissioners,

My name is Rennah Al-Naser. I moved to the Santa Ynez Valley in early 2020 with my husband and our family. I'm community minded and have been following the activity of the redistricting committee. As I see it, the current mapping that was drawn up 10 years ago that puts Isla Vista an urban area in the same district with the Santa Ynez Valley is shocking! We have little but nothing in common and it's only reasonable that SBCC and UCSB would be in the same district.

As I view the various maps that you are considering, I would like to recommend two maps #404 and/or 408B. This change would greatly serve our community and our neighbors to the North!

Thank you.

Rennah Al-Naser

Santa Ynez, CA

--

Rennah Al-Naser

From: [John Duncan](#)
To: [CEO Redistricting RES](#)
Cc: [John Duncan](#)
Subject: Map 818 with Revised Cuyama Designation
Date: Friday, November 19, 2021 3:56:54 PM

Caution: This email originated from a source outside of the County of Santa Barbara. Do not click links or open attachments unless you verify the sender and know the content is safe.

Dear Commissioners,

Watching your deliberations Thursday afternoon, two things were readily apparent. First, there is no perfect map that addresses all issues in a manner that is satisfactory to all of you and/or all of the public. A number of maps were endorsed but only with the caveat that certain modifications were necessary. Second, there is very strong support amongst commissioners to adopt a map that creates a district with a supermajority of Latino citizens of voting age (CVAP.)

One of the maps your commission advanced for careful consideration was Map 818 which attaches Guadalupe to Santa Maria to create a 67% Latino CVAP in the Fifth District. Map 818 manages to achieve this without unnecessary disruption of the entire county. It preserves communities of interest and their historic patterns of representation.

Map 818 honors the Santa Ynez Band of Chumash Indians request to preserve the connection between the Santa Ynez Valley and the Gaviota Coast from the Goleta Slough to Point Conception and “leave the boundaries of the Third District unchanged as much as possible.” Map 818 leaves the Santa Ynez Valley along with its connection to the Gaviota Coast intact, and the watershed of the Santa Ynez River is substantially unified.

The principal objection made to the map was the assignment of Cuyama to the First District and it was suggested that a modification be made to address that. A DistrictR map that incorporates that suggestion along with other minor adjustments that result in substantial improvements to the map has been drawn. This link will take you to it.

<https://districtr.org/plan/84365?event=sbcounty>

This Improved 818 shows Cuyama and the entire Hwy. 166 corridor as part of the Fourth District which encompasses the majority of the rural area in the northern part of the county.

Minor modifications to the boundary of the First and Second Districts within and around the City of Santa Barbara eliminate the “split” of the Eastern Goleta Valley in the San Roque area, reducing the number of splits to 4. All the remaining splits occur in “places” that have historically been split.

Very minor modifications to the boundary of the Second and Third districts at the edge of Goleta simplify the line. Minor adjustment to the boundary between the Third and the Fourth Districts in the Lompoc area, allow Hwy. 246 to serve as the boundary east of Lompoc, and the Santa Ynez River to serve as the boundary west of Lompoc.

The combined minor adjustments to the boundaries reduce the population deviation from 4.7% to 4.0%. All five districts are connected to the coastline in their traditional sequence.

In addition to having balanced populations, all five districts appear proportional with no single district encompassing virtually all the unincorporated area of the county. Instead

there are two somewhat larger districts, one in the north and one in the south, that include the more rural areas of the county.

This results in district sizes that are more supportive of efficient representation by a single supervisor. Unfortunately, many of the maps your commission has selected for further consideration include Godzilla-like “MegaDistricts” that defy adequate representation of the entire area and all residents, and cannot be considered compact.

Rather than turn the entire county topsy-turvy with a map that disrupts every district with questionable benefit, please consider how modifications to 818 can result in a map that efficiently addresses the great majority of your goals and comports with the legal requirements of your very challenging responsibility.

Thank you for your consideration,

J. Lansing Duncan

From: [Linda Honikman](#)
To: [CEO Redistricting RES](#)
Subject: comments for Redistricting Commission for County
Date: Friday, November 19, 2021 4:07:46 PM

Caution: This email originated from a source outside of the County of Santa Barbara. Do not click links or open attachments unless you verify the sender and know the content is safe.

Dear Redistricting Commission Members,

I am a long time resident of Santa Barbara County, and have worked on issues of affordable housing for some time, recognizing the impact that lack of housing security has had on half of our County's residents. This has made me particularly sensitive to the needs of renters, working class residents, and minorities trying to live in the same County where they work.

That's why I support map 818. It keeps important south coast communities connected (Carpinteria with Santa Barbara's east and west sides), and makes connections in north county by putting Guadalupe and part of Santa Maria together, and builds a strong bridge between the central and south coast by linking the densest portion of Lompoc with Isla Vista/UCSB and parts of western Goleta. This will empower voters who struggle the most, and often have the least voice in critical policies that have a huge impact on their lives.

I have heard that some residents of the Santa Ynez Valley don't want to be with Isla Vista. But there is no way to create a district for them that doesn't have some urban population in it, and the current district has been this way for as long as I can remember. I don't think that the sprawling rural district in map 821B is a good idea, since it is just too large and dispersed. I believe it also fails the test of compactness.

I hope you will adopt a map that protects our most vulnerable residents and empowers them to participate more in the electoral process.

Thank you for this important work!

Linda Honikman
resident of unincorporated southwest part of County since 1990

Future Housing Communities

Facebook Page: [Facebook.com/SBHousingHub](https://www.facebook.com/SBHousingHub)

From: [Elizabeth Bustamante](#)
To: [CEO Redistricting RES](#)
Subject: Please vote for Map 822
Date: Friday, November 19, 2021 4:12:08 PM

Caution: This email originated from a source outside of the County of Santa Barbara. Do not click links or open attachments unless you verify the sender and know the content is safe.

Santa Barbara County Citizens Independent Redistricting Commission

Dear Members of the Commission,

The task of redistricting Santa Barbara County is very important, and you are to be commended for your participation in this process. I support Map 822. It creates a majority Latino CVAP supervisorial district in Santa Maria.

I also support keeping Isla Vista in a supervisorial district including southern Santa Barbara county. Many local students attend SB City College and then UCSB. Many SBCC students live in Isla Vista. Many thousands of UCSB alumni live in Santa Barbara.

Map 822 respects communities of interest and results in all supervisorial districts having significant agricultural and rural, as well as suburban and urban, areas. It keeps cities and other places as whole as possible in the redistricting process.

Thanks for listening and for your important work.

Respectfully,

Liz Bustamante

From: [mewylie](#)
To: [CEO Redistricting RES](#)
Subject: Public Comment For November 22
Date: Friday, November 19, 2021 4:41:49 PM

Caution: This email originated from a source outside of the County of Santa Barbara. Do not click links or open attachments unless you verify the sender and know the content is safe.

Dear Commissioners,

I'm writing today on behalf of myself and my husband, Dennis Wylie. We have lived in Goleta since 1970 and raised our two children here. We first were renters and have owned our home for 43 years. We feel fortunate to live in the City of Goleta and enjoy the representation of two County Supervisors responding to our community needs and services.

Our preferred draft district map is numbered 818.

We have many shared interests and concerns with UCSB and neighboring Isla Vista such as roads, traffic and transit, shopping and recreating, housing availability and costs, elementary and secondary education of faculty, staff and all our community's children, the ocean and coastline, and environmental protections. We urge you to keep UCSB and Isla Vista together in the Third District where they always have been.

We are proud to have UCSB as our neighbor, and frequently enjoy the cultural opportunities afforded to us and the entire South Coast. It's important to recognize that UCSB's influence and interests extend far beyond Goleta up the Gaviota Coast.

Thank you for serving and for addressing the multiple impacts of your decision making by focusing on communities of interest and recognizing the need to advance the ethnic and cultural diversity that enhances our lives here.

Mary Ellen & Dennis Wylie

Sent from my iPad

From: dallen4191@aol.com
To: [CEO Redistricting RES](#)
Subject: supporting redistricting map #818
Date: Friday, November 19, 2021 4:48:31 PM

Caution: This email originated from a source outside of the County of Santa Barbara. Do not click links or open attachments unless you verify the sender and know the content is safe.

Dear Commission Members,

We have lived in southern Santa Barbara County for 40+ years, some of it in the Mission Canyon area, some downtown. We have seen the value of our current south coast supervisorial districts, as two supervisors have advocated for resources for our area, especially as we deal with the challenges of fire, housing shortages, and homelessness. We want to continue to have that!

We also recognize that our Latinx neighbors need stronger representation, so we urge you to keep the first district because it does this, and to link Guadalupe and Santa Maria in a new district to give those residents greater voting power. We believe this is required under the Voting Rights Act as well.

We have long and deep ties to UCSB and Isla Vista, and think that the needs of that community would be better met if they were strengthened by a link to Lompoc, where they have so much in common (ethnicity, housing status, economic challenges).

All of this is our way of saying, please support Map #818.

Thank you for your work on this important matter!

Dennis Allen and Jenny Cushnie
Santa Barbara

From: [Andee Gaines](#)
To: [CEO Redistricting RES](#)
Subject: Redistricting Maps
Date: Friday, November 19, 2021 10:34:34 AM

Caution: This email originated from a source outside of the County of Santa Barbara. Do not click links or open attachments unless you verify the sender and know the content is safe.

To the Citizens Independent Redistricting Commission,

Thank you for all your hard work on behalf of the residents of our County.

I would like to express my support for maps 816B and 818. They are different in some ways, but I know that you are considering different approaches.

816B: this is the best option for doing no harm, as I think one of you said yesterday. It makes important changes, but preserves the essence of the current districts. For many of us, least change is best since it causes the least disruption. I am concerned especially that moving around too many voters will disrupt their voting cycles, and that is a form of disenfranchisement.

818: this is my preferred map. It makes as few changes as it can while adding important support to communities that traditionally have less voting power. Thus, the new 5th district combines Guadalupe with the parts of Santa Maria that it has most in common with. This would create a Latinx majority-minority district that would really empower those voters. It also adds to renters' power by changing Lompoc to connect it to Isla Vista and western Goleta. Those are also more Latinx as well as heavily populated by renters. Beyond that, this map doesn't make changes it shouldn't, like to much of the 1st and 2nd districts. Those of us living in Santa Barbara and Goleta are pretty happy having two supervisors, by the way. We don't want to lose that, and we recommend that other larger cities embrace it also!

Andrea Gaines
Robert Gaines MD

[3940 Camellia Lane](#)
[Santa Barbara, Ca. 93110](#)

805-687-6051

From: [Nikolaus Schiffmann](#)
To: [CEO Redistricting RES](#)
Subject: Redistricting Maps
Date: Friday, November 19, 2021 4:49:55 PM

Caution: This email originated from a source outside of the County of Santa Barbara. Do not click links or open attachments unless you verify the sender and know the content is safe.

Dear Commission Members,

Having attended and participated in your hearings, I support Map 822. As I expressed at the most recent hearing, Map 822 results in majority Latino districts in 3 county supervisorial districts. It would place UCSB and Isla Vista in the 2nd District. I strongly support this move. As a former student at SBCC and UCSB, I know how close the connection between UCSB and Santa Barbara is.

To continue to place Isla Vista and UCSB in the 3rd District would be disadvantageous to them. There is almost no contact between residents in the Santa Ynez Valley, much less Lompoc, with UCSB and Isla Vista, but there is tremendous contact between Isla Vista and UCSB and Santa Barbara.

Supervisorial lines should be based on true communities of interest. Please do what is right for Santa Barbara County.

Nik Schiffmann

From: lannyebenstein@aol.com
To: [CEO Redistricting RES](#)
Subject: MAPS 822, 822a, AND 822b
Date: Friday, November 19, 2021 4:57:22 PM
Attachments: [Maps 822, 822a, 822b.pdf](#)

Caution: This email originated from a source outside of the County of Santa Barbara. Do not click links or open attachments unless you verify the sender and know the content is safe.

County of Santa Barbara
Citizens Independent Redistricting Commission

Dear Commissioners,

Thank you for your dedication and service to Santa Barbara County.

I was very glad that **Map 822** received the support of 5 of the 11 commissioners at the first round of deliberation on Thursday. I hope that Map 822 or its variants described here--822a and 822b--will remain in consideration after the next round of deliberation this Monday.

Strengths of Map 822 include very low population deviation between districts, high Latino CVAP proportion in the 5th District and thus compliance with the California Voting Rights Act, majority minority total populations in two other districts, few significantly divided places, greatest communities of interest, retention of existing supervisorial lines to the greatest extent feasible, location of significant rural and urban areas in all supervisorial districts, and use of easily identifiable roads and other boundaries to identify supervisorial districts.

The main concern with Map 822 expressed yesterday was that in it District 5 did not include Cuyama and New Cuyama. Accordingly, a variant of Map 822 that I would propose would be to move Cuyama and New Cuyama to District 5 from District 1. This variant of Map 822 would be **Map 822a**.

This next variant requires more discussion. While listening to deliberations of the Commission and public input, I have been impressed at the number of people who have said that the best resolution would be a plan everyone could live with--not a plan that everyone agreed with in every respect (that isn't possible), but a plan in which everyone felt that they have been heard and their input considered.

The two most emphatic areas of public testimony have been concerning Guadalupe and Isla Vista-UCSB.

Accordingly, I would also like to propose what I would call a "Grand Compromise" that perhaps everyone could live with, that would not give anyone all of what they wanted, but would give everyone some of what they would like and what is most important to them. For purposes of consideration, I call this compromise, **Map 822b**.

Map 822b would be based on Maps 822 and 822a in that it would incorporate the countywide aspects of the original Map 822, together with moving Cuyama and New Cuyama from District 1 to District 5 as in Map 822A.

In addition, Map 822b would move Guadalupe into District 5 and otherwise alter the boundary between the proposed Districts 4 and 5 so each would have equal population.

Since Map 822 already moves Isla Vista-UCSB to District 2, that aspect of the compromise proposed here is already accomplished in the previously submitted Map 822.

I attach a map of the new District 5 including the changes outlined here, including those suggested for both Map 822a and Map 822b. I also enclose a second map showing just the Santa Maria-Guadalupe area, as a result of its population density, together with the original Map 822.

As you will see, the proposed lines for the new District 5 meet the Commission's requirements for supervisorial districts very well. The population deviation is tiny, 0.04%. The boundaries in the City of Santa Maria follow among the most identifiable and major city streets--Stowell and Highway 101. The 4th District "peninsula" into District 5 would be eliminated. East of the City of Santa Maria, the boundary is the existing 5th District boundary, except that the Cuyama valley area would be included in District 5. West of the City of Santa Maria, all of Guadalupe and Highway 166 would be included in District 5 extending to the Pacific Ocean. In this way, as a result of Map 822b, all supervisorial districts would have coastal area and access.

I would like to comment again on the desirability of placing Isla Vista-UCSB in Supervisorial District 2. I first lived in Isla Vista as a toddler in 1961, 60 years ago. My father taught at UCSB and I teach at UCSB. Two of my brothers as well as I graduated from UCSB. Members of my family have lived in Isla Vista for 40 of the past 60 years. I believe I know the community as well as anyone.

Isla Vista and UCSB have far more connection to the South Coast than to any part of North County. Also, it is not possible to continue to place Isla Vista and UCSB in the 3rd District without dividing the City of Goleta through having Ellwood also be part of District 3. This division of Goleta is also not desirable for it.

Isla Vista and UCSB do not share a community of interest with Lompoc or the Santa Ynez Valley. The best placement of communities of interest in supervisorial redistricting is Isla Vista and UCSB in the 2nd District; and the City of Goleta, the Santa Ynez Valley, and almost all of the City of Lompoc in the 3rd supervisorial district.

Thank you for your consideration. Again, I hope that you will include **Map 822** or its variants, **Maps 822a** and **822b**, in the next round of deliberations of the Commission. A "Grand Compromise" of Guadalupe and Cuyama to District 5 and Isla Vista and UCSB to District 2 would be the best course for the future of Santa Barbara County.

Sincerely,
Lanny Ebenstein



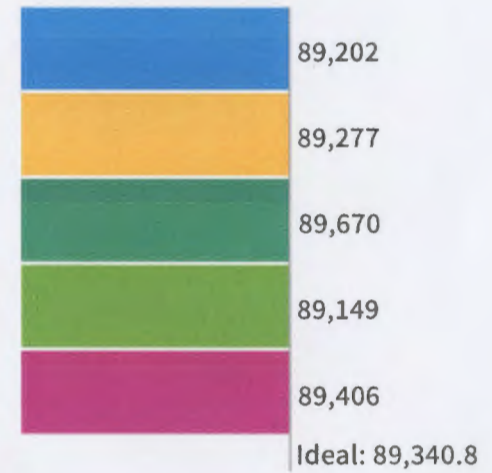
Population

Data Layers

Evaluation

Population Balance

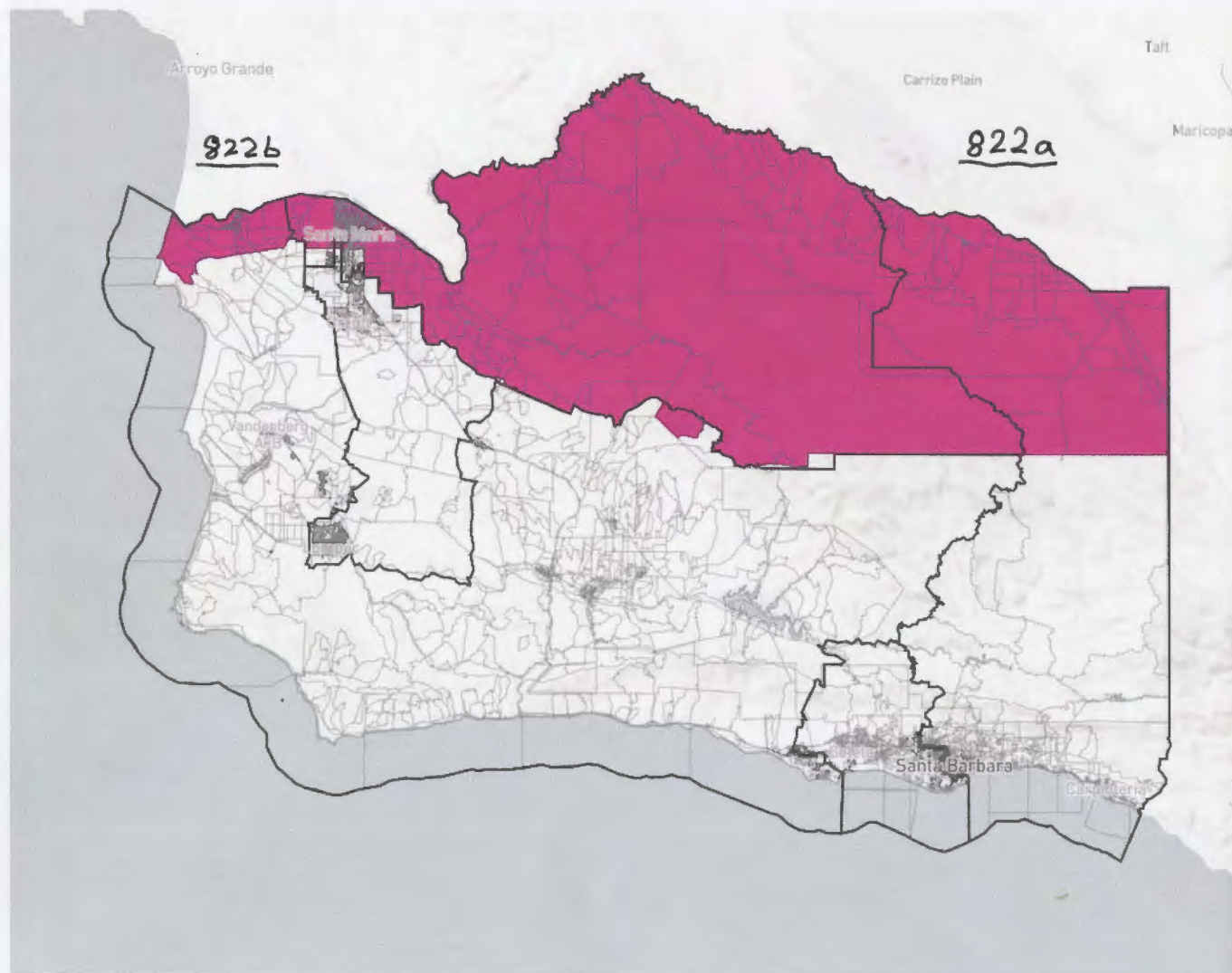
① Uses adjusted 2020 Decennial Census population with processing by National Demographics Corporation on 2020 Blocks.



UNASSIGNED POPULATION: 0

MAX. POPULATION DEVIATION: 0.37%

Original Map 822



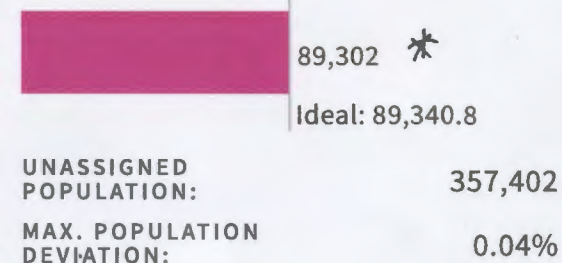
Population

Data Layers

Evaluation

Population Balance

① Uses adjusted 2020 Decennial Census population with processing by National Demographics Corporation on 2020 Blocks.

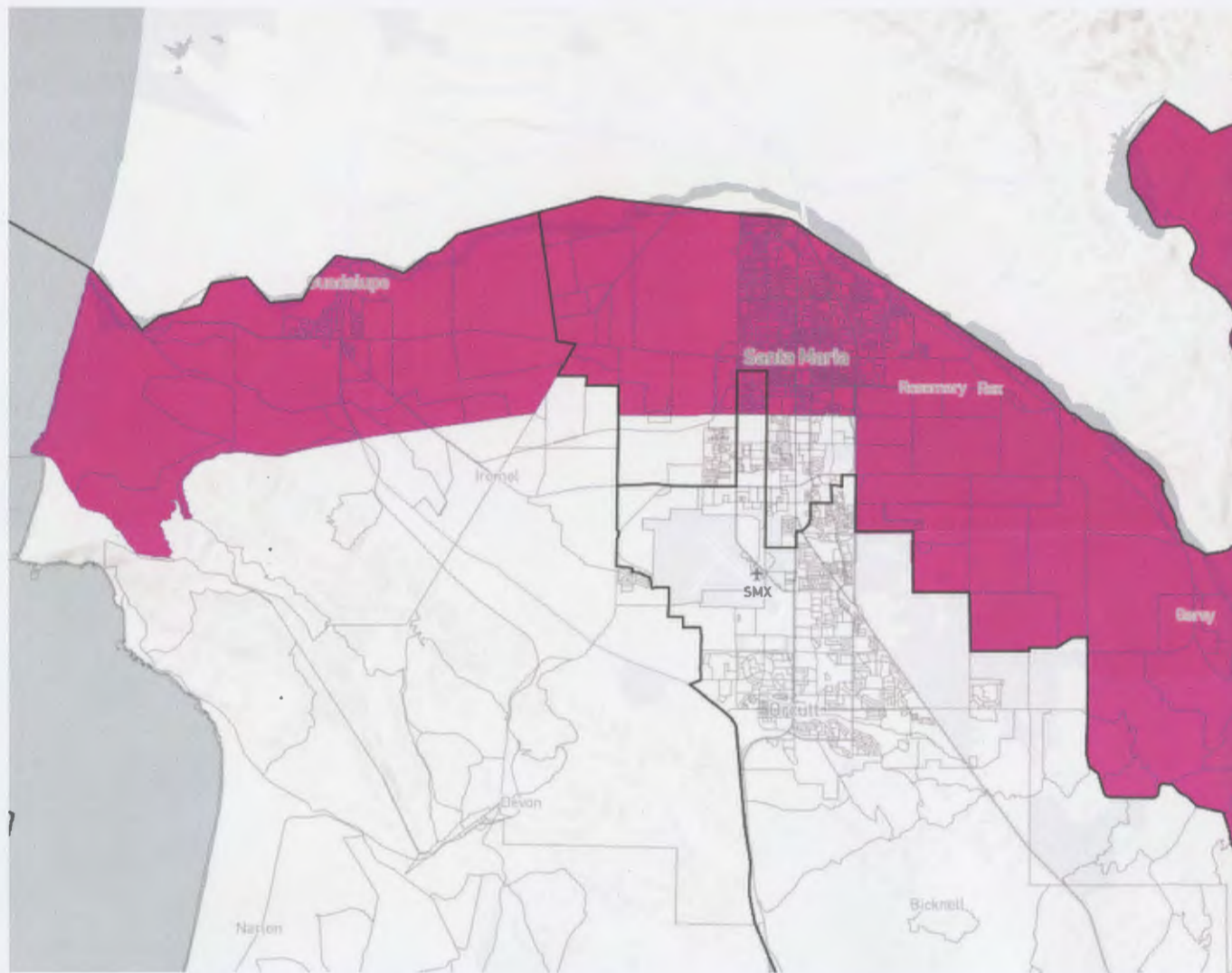


Map 822 with:

822a — including Cuyama, New Cuyama

822b — including Guadalupe

(Note: Existing, 2010 to 2020, Supervisorial lines shown in black)



Population

Data Layers

Evaluation

▼ Population Balance

① Uses adjusted 2020 Decennial Census population with processing by National Demographics Corporation on 2020 Blocks.

<div style="width: 100px; height: 20px; background-color: #c00040;"></div>	89,302 *	
	Ideal: 89,340.8	
UNASSIGNED POPULATION:		357,402
MAX. POPULATION DEVIATION:		0.04%

Map 822b : Detail

Guadalupe and Santa Maria

From: [Donna Will](#)
To: [CEO Redistricting RES](#)
Subject: Redistricting citizen input
Date: Friday, November 19, 2021 5:24:18 PM

Caution: This email originated from a source outside of the County of Santa Barbara. Do not click links or open attachments unless you verify the sender and know the content is safe.

Dear Redistricting Commission,

I favor map 818. Important points are that the 3rd district has historically included the Santa Ynez Valley, the Gaviota Coast, and Isla Vista.

Also, I like how Cuyama and the Chumash land is handled in the 818 map, it makes for an alignment of governance.

Thank you,
Donna Will

From: faas@verizon.net
To: [CEO Redistricting RES](#)
Subject: Public Comment for Nov 22 Meeting - Agenda Item 6 - Narrowing Focus Maps
Date: Friday, November 19, 2021 4:01:18 PM
Importance: High

Caution: This email originated from a source outside of the County of Santa Barbara. Do not click links or open attachments unless you verify the sender and know the content is safe.

To whom it may concern,

I am emailing to express my support for map number 801C. In my judgement, it solves many of the issues raised by the public over the past several months as well as doing the least harm by making too many unnecessary changes.

As was the case 10 years ago, I think it's important to avoid making too many changes, as that confuses people. Map 801C keeps intact most of the current first and second districts. It also keeps the valley connected to the coast, which is very important. The letter from the Chumash Tribe indicates this, as their long heritage connects them to the Gaviota coast and sacred sites.

As for changes that make sense: The commission has heard from many, many people about the importance of increasing Latino representation. Map 801C creates the strongest Latino representation countywide. It unites Santa Barbara County's largest Latino communities together in three different districts: Eastside together with Westside Santa Barbara in the 1st district, Lompoc together with Old Town Goleta in the 3rd, and Santa Maria with Guadalupe in the 5th. Of the five frontrunner maps identified by the commission last Thursday, it has the highest Latino voter population in all three of these districts. That's why it's supported by the county's largest Latino community organizations.

If your goal is to increase Latino representation, why in the world would you put Guadalupe with Orcutt?

Orcutt has one of lowest Latino populations in the entire county, lower than 6 of the county's 8 cities. Orcutt has double Guadalupe's median income, and triple its rate of college attainment. Guadalupe has triple Orcutt's share of Latino population and triple its poverty rate. Orcutt has ten times as many voters as Guadalupe, even in a high turnout presidential election. Putting Guadalupe in an Orcutt district will completely drown out the voice of Guadalupe residents. Anyone saying that putting Guadalupe with Orcutt will increase Latino voter representation has either been highly misinformed about the demographics of our county or has another political agenda altogether. From my experience of having lived here in Orcutt the past 18+ years, I am concerned that the white, middle-class residents of my community would dilute the vote of working class Latinx people.

The purpose of a citizens' commission is to allow the community a voice in the redistricting process. It would send a truly disheartening message if the map with more members of the public speaking in support than any other wasn't even chosen as one of the five focus maps to move forward for discussion. We strongly urge you to respect the community engagement process, and include Map 801C as one of the focus maps.

Finally, I would also like to make a pitch for not changing the numbering system, something I read that was being considered. The south to north numbering is straightforward and we are used to it. Changing the numbering would also change the voting schedules for people and might result in someone not being able to vote in an election they were expecting to be able to participate in.

So please continue considering Map 801C as the best balance between making necessary changes and keeping some things status quo.

Sincerely,

Ron Faas

1650 E. Clark Ave. #248

From: [Lawanda Lyons-Pruitt](#)
To: faas@verizon.net; [CEO Redistricting RES](#)
Subject: RE: Public Comment for Nov 22 Meeting - Agenda Item 6 - Narrowing Focus Maps
Date: Friday, November 19, 2021 5:30:08 PM

Caution: This email originated from a source outside of the County of Santa Barbara. Do not click links or open attachments unless you verify the sender and know the content is safe.

Thank you, Ron. As an fyi, CAUSE MAP moves Joan out of the 3rd and into the 2nd. I don't support it. Only the portion that unites Guadalupe and Northwest Santa Maria.
FYI

Lawanda Lyons-Pruitt
President
Santa Maria-Lompoc NAACP
WEBSITE:

[https://urldefense.com/v3/___https://www.santamarialompocnaacp.org_!!Ifs0MJmijOm0!4w5uRhGAuefHS-8Z1qlqB9C45rds6m73ukuM4Kos-daE48wS8xNgJlz4vMQtuA59h8mJLW4\\$](https://urldefense.com/v3/___https://www.santamarialompocnaacp.org_!!Ifs0MJmijOm0!4w5uRhGAuefHS-8Z1qlqB9C45rds6m73ukuM4Kos-daE48wS8xNgJlz4vMQtuA59h8mJLW4$)

FACEBOOK:

[https://urldefense.com/v3/___http://www.facebook.com/SMLONAACP_!!Ifs0MJmijOm0!4w5uRhGAuefHS-8Z1qlqB9C45rds6m73ukuM4Kos-daE48wS8xNgJlz4vMQtuA59z7UPjBg\\$](https://urldefense.com/v3/___http://www.facebook.com/SMLONAACP_!!Ifs0MJmijOm0!4w5uRhGAuefHS-8Z1qlqB9C45rds6m73ukuM4Kos-daE48wS8xNgJlz4vMQtuA59z7UPjBg$)

Email: lyonspruitt@msn.com or info@santamarialompocnaacp.org
Phone: (805)-448-7869

“I URGE you to answer the highest calling of your heart and STAND UP for what you truly believe.”
Congressman John R. Lewis

“Democracy Dies In Darkness.” The Washington Post

-----Original Message-----

From: faas@verizon.net <faas@verizon.net>
Sent: Friday, November 19, 2021 4:01 PM
To: redistricting@countyofsb.org
Subject: Public Comment for Nov 22 Meeting - Agenda Item 6 - Narrowing Focus Maps
Importance: High

To whom it may concern,

I am emailing to express my support for map number 801C. In my judgement, it solves many of the issues raised by the public over the past several months as well as doing the least harm by making too many unnecessary changes.

As was the case 10 years ago, I think it's important to avoid making too many changes, as that confuses people. Map 801C keeps intact most of the current first and second districts. It also keeps the valley connected to the coast, which is very important. The letter from the Chumash Tribe indicates this, as their long heritage connects them to the Gaviota coast and sacred sites.

As for changes that make sense: The commission has heard from many, many people about the importance of increasing Latino representation. Map 801C creates the strongest Latino representation countywide. It unites Santa Barbara County's largest Latino communities together in three different districts: Eastside together with Westside Santa Barbara in the 1st district, Lompoc together with Old Town Goleta in the 3rd, and Santa Maria with Guadalupe in the 5th. Of the five frontrunner maps identified by the commission last Thursday, it has the highest Latino voter population in all three of these districts. That's why it's supported by the county's largest Latino community organizations.

If your goal is to increase Latino representation, why in the world would you put Guadalupe with Orcutt? Orcutt has one of lowest Latino populations in the entire county, lower than 6 of the county's 8 cities. Orcutt has double Guadalupe's median income, and triple its rate of college attainment. Guadalupe has triple Orcutt's share of Latino population and triple its poverty rate. Orcutt has ten times as many voters as Guadalupe, even in a high turnout presidential election. Putting Guadalupe in an Orcutt district will completely drown out the voice of Guadalupe residents. Anyone saying that putting Guadalupe with Orcutt will increase Latino voter representation has either been highly misinformed about the demographics of our county or has another political

agenda altogether. From my experience of having lived here in Orcutt the past 18+ years, I am concerned that the white, middle-class residents of my community would dilute the vote of working class Latinx people.

The purpose of a citizens' commission is to allow the community a voice in the redistricting process. It would send a truly disheartening message if the map with more members of the public speaking in support than any other wasn't even chosen as one of the five focus maps to move forward for discussion. We strongly urge you to respect the community engagement process, and include Map 801C as one of the focus maps.

Finally, I would also like to make a pitch for not changing the numbering system, something I read that was being considered. The south to north numbering is straightforward and we are used to it. Changing the numbering would also change the voting schedules for people and might result in someone not being able to vote in an election they were expecting to be able to participate in.

So please continue considering Map 801C as the best balance between making necessary changes and keeping some things status quo.

Sincerely,

Ron Faas

1650 E. Clark Ave. #248

From: [Walker Armstrong](#)
To: [CEO Redistricting RES](#)
Subject: Hhhh
Date: Friday, November 19, 2021 7:14:55 PM

Caution: This email originated from a source outside of the County of Santa Barbara. Do not click links or open attachments unless you verify the sender and know the content is safe.

B
Sent from my iPhone

From: [Mccurdy](#)
To: [CEO Redistricting RES](#)
Subject: input on redistricting and support for Maps 816B and 818.
Date: Saturday, November 20, 2021 1:12:45 PM
Attachments: [Redistricting 2021.pdf](#)

Caution: This email originated from a source outside of the County of Santa Barbara. Do not click links or open attachments unless you verify the sender and know the content is safe.

Please consider our input on redistricting and support Maps 816B and 818.

Sincerely,

Albert and Alice McCurdy

Albert and Alice McCurdy
2550 Baseline Avenue
Ballard, CA 93463


November 20, 2021

To the Redistricting Commission:

As longtime residents of the Santa Ynez Valley, we are very concerned that the redistricting process result in supervisorial districts that make sense from both historic and land use perspectives. To that end, we are strongly in favor of Maps 816B and 818. Both of these options would keep the Santa Ynez Valley and its watershed intact. This goal is vital for effective longterm planning. Maps 816B and 818 also respect the interest of the Chumash to keep the Gaviota Coast, from the Goleta Slough to Point Conception, connected to the Valley.

Please respect these land use goals in your decision making process and adopt either Map 816B or Map 818.

Sincerely,



Alice McCurdy

Albert and Alice McCurdy

From: [Susan Bott](#)
To: [CEO Redistricting RES](#)
Subject: Redistricting Preference
Date: Saturday, November 20, 2021 1:29:32 PM

Caution: This email originated from a source outside of the County of Santa Barbara. Do not click links or open attachments unless you verify the sender and know the content is safe.

Dear Redistricting Commission,

Please record our preference for redistricting map #818 which would leave our Third District as close to its current configuration as possible. We feel a connection with the other cities, townships and rural areas in the current Third District.

Thanks for your consideration,

Susan and Robert Bott

160 Willow Drive
Solvang

805-708-6337

From: [George Larson](#)
To: [CEO Redistricting RES](#)
Subject: strange bedfellows? why?
Date: Saturday, November 20, 2021 1:54:14 PM

Caution: This email originated from a source outside of the County of Santa Barbara. Do not click links or open attachments unless you verify the sender and know the content is safe.

Dear Redistricting Commissioners,

My wife and I are in support of maps 804,404,103 and 106 to be considered for final adoption. We feel that cities should be kept as whole as possible and we do not want to see IV and UCSB placed in a North County District.

Thanks for your considerations.

George and Susan Larson

From: [Richard B. Silver](#)
To: [CEO Redistricting RES](#)
Subject: County Redistricting
Date: Friday, November 19, 2021 1:42:05 PM

Caution: This email originated from a source outside of the County of Santa Barbara. Do not click links or open attachments unless you verify the sender and know the content is safe.

Dear Commissioners,

As an active and involved member of our community, I am concerned about the County redistricting process and the outcome of that process. I am writing in support of two maps: 818 and 816B.

My preferred map is map 818 because it makes a few really important changes. By linking voters in the densest portion of Lompoc with voters in communities on the south coast who share similar demographics and interests, it creates the opportunity for the election of a representative whose voters are more heavily renters and working-class to more powerfully represent those voters and more effectively impact legislation that impacts their constituents. Map 818 also links the Santa Ynez Valley with the Gaviota Coast, which communities share many characteristics and interests, and which is important to Chumash communities. That is a much better approach than creating a huge, sprawling rural-communities-only district that would be so geographically large that it would be more difficult for the supervisor who is elected to effectively serve their constituents.

One goal of the redistricting process should be to encourage people to get to know their supervisor and become more engaged in the political process, including by voting. One way to accomplish that goal is to have the new districts reflect as closely as possible the current districts. I worry that too much change will result in less participation in politics in general and voting in particular. If map 818 is not approved, I support the selection of map 816B because it makes fewer changes than most of the other proposed maps.

Thank you for your attention and all your efforts.

Richard Silver
Santa Barbara CA

From: councilmanlgt@aol.com
To: [CEO Redistricting RES](#)
Subject: County Redistricting
Date: Saturday, November 20, 2021 8:42:46 PM

Caution: This email originated from a source outside of the County of Santa Barbara. Do not click links or open attachments unless you verify the sender and know the content is safe.

Dear Commissioners,

I am writing in support of maps #804, 404, 103, and 106 to be considered for final adoption.

We want cities kept whole as possible and we do not want IV and UCSB placed into a North County District.

Sincerely,

Eileen Trujillo

From: [Joan Davidson And John Schnittker](#)
To: [CEO Redistricting RES](#)
Subject: Third District comment
Date: Sunday, November 21, 2021 7:11:33 AM

Caution: This email originated from a source outside of the County of Santa Barbara. Do not click links or open attachments unless you verify the sender and know the content is safe.

Dear Commissioners,

As a resident of the Santa Ynez Valley for over 31 years, I am concerned about the proposed redistricting of the Third District. In order to keep the Valley intact, and to preserve its historic relationship to the South Coast, I urge you to adopt either Map 816B or Map 818. These maps achieve your goal of rebalancing the population served by the five County Supervisors while avoiding unnecessary disruption to the lives of County residents.

I thank you for your consideration of this request.

Sincerely,

Joan H. Davidson
1637 Calzada Avenue
Santa Ynez, CA 93460

Sent from my iPad

From: [Carol Redhead](#)
To: [CEO Redistricting RES](#)
Subject: REDISTRICTING COUNTY OF SANTA BARBARA
Date: Sunday, November 21, 2021 10:04:23 AM

Caution: This email originated from a source outside of the County of Santa Barbara. Do not click links or open attachments unless you verify the sender and know the content is safe.

Good evening redistricting commission. I live in the district 3 portion of Lompoc, split off from the rest of Lompoc in district 4. Lompoc, one small city of approximately 46,000 residents, divided in two! Lompoc should be represented by only one supervisor - not by two different people. Lompoc, and surrounding towns are populated by many farms, vineyards, home owners, small and medium businesses, all of which have little in common with the up to 55,000 young renters: students at UCSB, living in and around Isla Vista. Please take this enormous disparity into consideration while you decide on a new district plan for our different areas. Please do not split Lompoc again, and please separate Isla Vista and UCSB from the northern part of the county. Thank you, Carol Redhead

From: [Judith M. Stauffer](#)
To: [CEO Redistricting RES](#)
Subject: In support of Redistricting Maps 816B and 818
Date: Sunday, November 21, 2021 10:05:18 AM

Caution: This email originated from a source outside of the County of Santa Barbara. Do not click links or open attachments unless you verify the sender and know the content is safe.

Dear Commissioners,

As a 32-year resident in the unincorporated area within the Santa Ynez Valley and 15-year director of community relations at UCSB until my retirement, I am writing in **support of redistricting maps 816B and 818** because they:

- a) understand the importance of keeping the entire Santa Ynez Valley intact (Third District);
- b) honor the Chumash request that the Gaviota Coast from Goleta Slough to Point Conception remain connected to the Santa Ynez Valley; and
- c) maintain the historical inclusion of UCSB and Isla Vista in the Third District.

The additional value of redistricting map 818 is that it also allows for a supermajority of Latino residents in the Fifth District.

Sincerely,

Judi Stauffer

1610 Cougar Ridge Road
Buellton California 93427
rjshow@me.com

From: [LINDA GARDY](#)
To: [CEO Redistricting RES](#)
Subject: Concerns of redistricting
Date: Sunday, November 21, 2021 10:32:09 AM

Caution: This email originated from a source outside of the County of Santa Barbara. Do not click links or open attachments unless you verify the sender and know the content is safe.

Dear Redistricting Commission,

I applied to serve on this commission but was not appointed. However, I remain very interested in the outcome of your efforts and I appreciate all your diligent work. I have lived in Summerland for 40+ years and retired from the County having served for 30+ years in many Departments and in different capacities.

I am very concerned about some of the maps that you are considering. I feel that these make significant but unwarranted changes. In particular it seems to me that the First District works pretty well as it is. We have a lot of water issues in common so it's been really important for us to have a supervisor who can bridge the different communities as we struggle with extreme drought.

Our district is diverse in other ways. For example, I live in Summerland which is certainly not as affluent as Montecito, and is also different from Carpinteria which is right next-door. We do not expect to be in a homogenous District, our shared issues are what unite us.

I also think that a First District that tries to connect us to distant communities like Isla Vista or the Santa Ynez Valley does not make sense in terms of compactness. And of course we all shop in Santa Barbara so it makes sense for us to continue to be linked to the part of the city closest to us.

Thank you for your consideration.

Linda Gardy
Summerland

From: [Mark Oliver](#)
To: [CEO Redistricting RES](#)
Subject: Redistricting Map Comments for 11.22.21 Meeting
Date: Sunday, November 21, 2021 10:33:44 AM
Attachments: [Mark Oliver Redistricting 11.21.21.pdf](#)

Caution: This email originated from a source outside of the County of Santa Barbara. Do not click links or open attachments unless you verify the sender and know the content is safe.

Dear Commissioners,

Please find the attached PDF letter with my comments for the meeting Monday, November 22.

If possible please acknowledge receipt.

Thank you.

Mark Oliver
Former president, Santa Ynez Valley Alliance
606 Alamo Pintado Rd, Ste 3-256
Solvang, CA 93463

November 21, 2021

Citizens Independent Redistricting Commission

**RE: Comments in opposition to Map 821B
and support of maps 816B and 822**

Dear Commissioners,

Map 821B represents partisan gerrymandering:

- It disenfranchises thousands of residents, especially in the Santa Ynez Valley watershed, by lumping them in with residents of Santa Maria and Orcutt, communities with which it shares no common interests.
- It turns out two experienced supervisors and creates uncertainty for residents of the new fourth district by disrupting existing Community Service Districts, and in two cases, their own city governments.
- It significantly reduces indigenous minorities voters' clout (Chumash), a violation of the still-remaining parts of the Voting Rights Act.
- It creates partisan districts that will primarily reflect the interests of the north county residents and create an unhealthy balance of power throughout the county.
- In sum, Map 821B is unconscionable and may lead to costly litigation.

Maps 816B and/or 822 on the other hand, seek to keep the delicate balance necessary for the many diverse voices of the county to be equally heard— regardless of race, social class, income, religion, and political affiliation.

With Map 816B, the current third district will continue to be unified and represented by the largest number of citizens in unincorporated county areas, providing them with much needed representation in county government.

The balance between the urban North County and urban South County would continue to be buffered by the third district—a balance necessary to governing a

fractious County with opposing ideas about where it is headed in the future.

Map 822 may be a more equitable solution for the North County area because it unites the communities of Guadalupe, Orcutt, and part of Santa Maria, areas of common interest and demographics. It, too, grants the Santa Ynez Valley watershed and rural areas of the County the autonomy necessary for their fair representation.

Maps 816B and 822 constitute a more conservative, natural and "evolutionary" change.

I urge rejection of Map 821B and adoption or modification of either Map 816B or 822. Thank you for consideration of my comments.

Sincerely,

Mark Oliver
Former president, Santa Ynez Valley Alliance
Solvang

From: [Mark Preston](#)
To: [CEO Redistricting RES](#)
Subject: 10 Focus Maps
Date: Sunday, November 21, 2021 10:34:30 AM
Attachments: [DRAWSANTABARBARA.docx](#)

Caution: This email originated from a source outside of the County of Santa Barbara. Do not click links or open attachments unless you verify the sender and know the content is safe.

Citizens Independent Redistricting Committee,

My name is Mark Preston. I have lived most of the past 55 years in the 3d District. I have been involved. I have served on the Buellton Planning Commission, Santa Ynez General Plan Advisory Committee, and Santa Ynez River SGMA oversight.

In 2010, I spent many hours laboring over maps for 2011 redistricting. I KNOW it is an almost impossible task. I have boiled down my comments on the 10 maps to 3 critical issues.

1. New Cuyama area must be in the 4th or 5th District.. The inclusion into the 1st district does not make any logistical sense. It is bizarre. The Cuyama area is over 2 hours from 1st District via Santa Maria or Ojai!
2. Isla Vista should not be included in District 2 with Goleta. The City of Goleta purposely excluded Isla Vista from the incorporation of Goleta. With good cause, Isla Vista is historically in the 3d District.
3. The Santa Ynez Valley should always be in the 3d District. I believe the Commission owes some consideration to historical precedent. Every general election winner, AND every loser for 3d District Supervisor, since the middle 80s, has been a resident of the Santa Ynez Valley. Any effort to move the Valley into another district smacks of actionable gerrymandering.

Of the 10 maps offered, only 809 checks all the boxes in a logical way.

Map 818 is reasonable, except for the placement of New Cuyama.

I look forward to any questions you may have regarding my comments.

--

Mark Preston
805 403-3706

November 21, 2021

Citizens Independent Redistricting Committee,

My name is Mark Preston. I have lived most of the past 55 years in the 3d District. I have been involved. I have served on the Buellton Planning Commission, Santa Ynez General Plan Advisory Committee, and Santa Ynez River SGMA oversight.

In 2010, I spent many hours laboring over maps for 2011 redistricting. I KNOW it is an almost impossible task. I have boiled down my comments on the 10 maps to 3 critical issues.

1. New Cuyama area must be in the 4th or 5th District.. The inclusion into the 1st district does not make any logistical sense. It is bizarre. The Cuyama area is over 2 hours from 1st District via Santa Maria or Ojai !
2. Isla Vista should not be included in District 2 with Goleta. The City of Goleta purposely excluded Isla Vista from the incorporation of Goleta. With good cause, Isla Vista is historically in the 3d District.
3. The Santa Ynez Valley should always be in the 3d District. I believe the Commission owes some consideration to historical precedent. Every general election winner, AND every loser for 3d District Supervisor, since the middle 80s, has been a resident of the Santa Ynez Valley. Any effort to move the Valley into another district smacks of actionable gerrymandering.

Of the 10 maps offered, only 809 checks all the boxes in a logical way.

Map 818 is reasonable, except for the placement of New Cuyama.

I look forward to any questions you may have regarding my comments.

--

Mark Preston 805 403-3706

From: [deb.robinson](#)
To: [CEO Redistricting RES](#)
Subject: Is PASSCODE number required for phoning into zoom meeting 11/22/21 6 pm
Date: Sunday, November 21, 2021 9:29:16 AM

Caution: This email originated from a source outside of the County of Santa Barbara. Do not click links or open attachments unless you verify the sender and know the content is safe.

Hello,

I want to phone into the redistricting zoom meeting tomorrow night 11/22/21 at 6:00 pm. because I will not be home with my wifi and laptop. The directions for phoning in include a phone number 669 900-6833 and a meeting ID 966 2781 8457 but do not include a PASSCODE number. When I phone into other zoom meetings - they require a PASSCODE number (a number that does not include letters).

Also, I was wondering if I have to dial *9 to raise my hand when phoning into the meeting and dial *6 to unmute myself after the host has called on me to speak and says that they have unmuted me.

I will be phoning in on my cell phone 626 833-7550.

Thank you,

Deb Robinson

Lompoc, CA

From: [Bobbi McGinnis](#)
To: [deb robinson](#)
Cc: [CEO Redistricting RES](#)
Subject: Re: Is PASSCODE number required for phoning into zoom meeting 11/22/21 6 pm
Date: Sunday, November 21, 2021 11:22:10 AM

Caution: This email originated from a source outside of the County of Santa Barbara. Do not click links or open attachments unless you verify the sender and know the content is safe.

No passcode required

Sent from my iPhone

Bobbi McGinnis
Century 21 Butler Realty Inc
1635 State St
Santa Barbara Ca 93101
Mobile: 805-680-6921
FAX: 805-569-0491

On Nov 21, 2021, at 9:29 AM, deb robinson <debrobinson10@earthlink.net> wrote:

Hello,

I want to phone into the redistricting zoom meeting tomorrow night 11/22/21 at 6:00 pm. because I will not be home with my wifi and laptop. The directions for phoning in include a phone number 669 900-6833 and a meeting ID 966 2781 8457 but do not include a PASSCODE number. When I phone into other zoom meetings - they require a PASSCODE number (a number that does not include letters).

Also, I was wondering if I have to dial *9 to raise my hand when phoning into the meeting and dial *6 to unmute myself after the host has called on me to speak and says that they have unmuted me.

I will be phoning in on my cell phone 626 833-7550.

Thank you,

Deb Robinson
Lompoc, CA

From: [Marian Shapiro](#)
To: [CEO Redistricting RES](#)
Subject: Redistricting
Date: Friday, November 19, 2021 2:54:06 PM

Caution: This email originated from a source outside of the County of Santa Barbara. Do not click links or open attachments unless you verify the sender and know the content is safe.

Dear Commissioners,

My name is Marian Shapiro. I have spoken before you in the past and told you about the many decades that my husband and I have loved living in Isla Vista and western Goleta. We feel very connected to our community. We have been both renters and homeowners and we see the various issues affecting our community as a result.

Map number 818 is our preferred map at this time.

We think that the current map does a pretty good job, but understand that newly drawn districts could improve matters for our least franchised county residents. We support connecting Guadalupe with a good part of Santa Maria because it would empower more Latino voters in the north county especially those from farm worker and immigrant families. These are the people who are least empowered by the current system.

Given the socioeconomics of Isla Vista and our part of Goleta, we feel that it makes sense to be connected to the part of Lompoc that would be in the third district. We have enough in common with them to be considered a community of interest. And we think Lompoc residents would be well served by a third district supervisor elected by majority renters and middle and lower income residents.

We also feel that it is an advantage to have two supervisors for our city, which is actually a good bit smaller than Lompoc. That means we have two people advocating for us on the board of supervisors.

Thank you for your hard work over these past months — we really appreciate all you are doing for our community!

Sincerely,

Marian and Marty Shapiro

249 Savona Ave. Goleta, CA 93117

Landline preferred 805-968-0478. Cell 805-252-8616 Don't always hear it

From: [Walker Armstrong](#)
To: [CEO Redistricting RES](#)
Subject: Redistricting
Date: Friday, November 19, 2021 7:16:33 PM

Caution: This email originated from a source outside of the County of Santa Barbara. Do not click links or open attachments unless you verify the sender and know the content is safe.

Santa Barbara County Redistricting Commission,

My name is Walker Armstrong, I am a resident of the **4th district**. I graduated from St. Joseph Highschool and Allan Hancock College, where I played collegiate Baseball. **I believe that Lompoc and UCSB should not share a supervisorial district.** Having grown up in North County, I know first hand the significant differences between the two areas that are not necessarily visible from a South County view.

Most importantly, Santa Barbara County must respect and acknowledge differences in student populations. Lompoc is the home of many Allan Hancock students. The vast majority of these students are commuters, living at home with their families. They do not share living or education spaces with students of UCSB.

The students of UCSB are almost indistinguishable from the students of SBCC. These students take courses together, live in the same housing complexes. UCSB is the #1 destination for SBCC transfers. UCSB and SBCC actually share professors; educators who teach at both the UCSB and Santa Barbara City College.

I personally knew student athletes who attended UCSB but took courses at SBCC so they could compete in sports on SBCC teams. **SBCC even offers Cross Enrollment, so students can take courses at both UCSB AND SBCC.** UCSB and SBCC are extremely intertwined and immediately related to one another on many levels.

I believe that if UCSB and Lompoc are placed in a supervisor district with UCSB, the voices of north county students will once again be drowned out by students in the South. We already live in a county that spends more than double the amount of money on education in the South than it does in the North.

Thank you,

Walker Armstrong

From: [Ken and Pat](#)
To: [CEO Redistricting RES](#)
Subject: Redistricting
Date: Sunday, November 21, 2021 12:08:04 PM

Caution: This email originated from a source outside of the County of Santa Barbara. Do not click links or open attachments unless you verify the sender and know the content is safe.

Dear people,

I cannot attend your meeting but want to submit my comments about the focus maps you are considering.

I feel that currently, the best approach is what maps 816B and 818 are doing.

Map 816B makes the fewest changes, which would be best, since people are used to the current districts.

However, map 818 makes some changes that would empower more working class and minority voters, which I think is important. It seems to strike the best balance between status quo and beneficial changes.

I do want to say that it does NOT make sense to put all the south coast higher education institutions into one district. UCSB is a large residential 4 year school, with many thousands of non-local students clearly living nearby. City College is a community college, with most of its students living scattered all over the area; the same is true of Antioch. Westmont is more residential but it is quite small, and of course it is nestled in Montecito, so you would have to gerrymander to fit it in with the other schools anyway. Trying to put all these students in a single district doesn't make sense.

Thank you for considering my comments,

Pat Johnson

From: [Gay Infanti](#)
To: [CEO Redistricting RES](#)
Subject: Comment re Latest-Focus Redistricting Maps
Date: Sunday, November 21, 2021 12:44:18 PM

Caution: This email originated from a source outside of the County of Santa Barbara. Do not click links or open attachments unless you verify the sender and know the content is safe.

I am a resident of Solvang and wish to provide my input to the redistricting process. I am in favor of draft maps 104, 809, 408B, and 816B. The Santa Ynez Valley should all be kept in one district and should not be combined with Santa Maria. The maps I referenced in the previous sentence best keep existing communities of interest together. Thank you for your consideration of my comments.

Thank you,
Gay Infanti
920 Nysted Dr
Solvang, CA 93463

From: [Cage Englander](#)
To: [CEO Redistricting RES](#)
Subject: COUNTY OF SANTA BARBARA CITIZENS INDEPENDENT REDISTRICTING COMMISSION PUBLIC MEETING
Date: Sunday, November 21, 2021 2:35:50 PM

Caution: This email originated from a source outside of the County of Santa Barbara. Do not click links or open attachments unless you verify the sender and know the content is safe.

Hey all.

I would like to submit the following question for tomorrow's redistricting meeting:

"I am a long time resident of Santa Barbara and attended SBCC.

I wanted to explain why I support map 408B that unites these two campuses into a shoreline district

1) SBCC is a "feeder" school to UCSB. On SBCC University Transfer page website it states

"The University Transfer Academy (UTA) assures you of transfer in a timely manner to the prestigious [University of California System](#). [UC Santa Barbara](#) leads all campuses with the most SBCC transfer students, who make up about 1/3 of their transfer pool. "

2). Thousands of SBCC students live in Isla Vista.

3) UCSB is currently in the SBCC Trustee District, and votes in SBCC elections. UCSB elected Johnathan Abboud to the city college Board of Trustees, the same individual who works as the Isla Vista's Community Service District General Manager.

4). UCSB students vote on SBCC elected officials and on SBCC school bonds - they do not have ANY relationship with Allen Hancock College. That is why they should be grouped into a district with SBCC students and not with Allen Hancock students. There are 20,000 fallen Hancock students, the vast majority of them from Lompoc, Santa Maria & Santa Ynez.

6. UCSB students work, live, visit, and spend time in Santa Barbara City. They seldom travel to Lompoc, Santa Ynez or Santa Maria.

7. Most students at Allen Hancock are not renters, they are commuting from home. The only argument for putting UCSB into a district with Lompoc is that they share interest as renters - but Santa Barbara City College students rent at a higher rate than UCSB - because nearly half of UCSB students live on campus. UCSB and SBCC are more similar to each other than almost any other group in the county.

8. As it turns out, UCSB doesn't even seem to be interested in Lompoc. I searched the web and was not able to even find an article from UCSB's two student

newspapers (the bottom line and the nexus) that mentioned or discussed issues that Lompoc faces."

Thanks!

--

Cage Englander
Sensor Industries
Cageenglander@gmail.com
(805) 450-0031



SensorIndustries.com

From: penny2ca@aol.com
To: [CEO Redistricting RES](#)
Subject: Feedback re redistricting maps
Date: Sunday, November 21, 2021 2:45:28 PM

Caution: This email originated from a source outside of the County of Santa Barbara. Do not click links or open attachments unless you verify the sender and know the content is safe.

Hello Commissioners:

Thank you for taking on this important task, and thank you for considering my comments about the final 10 maps you are evaluating.

I live in Santa Ynez and am mindful of the important role water plays in our future.

I feel it is important for District 3 to include, if possible, the entire Santa Ynez River watershed, including Lompoc and the mouth of the River, so from that standpoint I would prefer 104, 809, and 818.. However, none of these include Los Alamos. From an economic standpoint, I think Los Alamos shares many of the same characteristics as the rest of District 3.

Aside from those points, I do not endorse the present configuration of District 1, which includes the Cuyama Valley.

Thank you.

Penny Knowles
114 Calzada Ave
Santa Ynez, CA 93460

From: [John Duncan](#)
To: [CEO Redistricting RES](#)
Cc: [John Duncan](#)
Subject: Maps 809 and 818
Date: Sunday, November 21, 2021 3:08:32 PM

Caution: This email originated from a source outside of the County of Santa Barbara. Do not click links or open attachments unless you verify the sender and know the content is safe.

Dear Commissioners,

I hope you have had the opportunity to read my previous letter regarding the merits of Map 818 and how small modifications to it could result in an even better map, while addressing This link shows that revision and small modifications that reduce the number of split places to 4, simplify boundaries and improve the population deviation.

<https://districtr.org/plan/84365?event=sbcounty>

Both Maps 818 and Map 809 achieve the goal of creating a district with a supermajority (67%) of Latino citizens of voting age (CVAP) with almost identical configurations. Both manage to do so without disrupting the entire county or creating an unmanageable Godzilla-like “MegaDistrict” that sprawls across the entire county.

Map 809 already has Cuyama in a northern district but Map 818’s treatment of the boundary in Santa Maria and Lompoc is slightly simpler. Both show boundary lines in clear justifiable locations. 818 relies more on the existing boundary in the City of Santa Barbara and makes minor adjustments while, 809 moves the line to an entirely new location.

Because these two maps are almost identical. I suggest you consider them as a single map (809/818) with two variants, allowing the commission to combine the best elements of both maps to the extent allowed by the population deviation. While working on Map 818 (see above) I was able to reduce the population deviation by making very minor careful adjustments to the boundaries. If you focus too much on minimizing population deviation however, you risk undermining the logic and simplicity of the boundaries.

Both 809 and 818 result in logical proportional districts all tied to the coastline. They honor the Santa Ynez Band of Chumash Indians’ request to preserve the connection between the Santa Ynez Valley and the Gaviota Coast from the Goleta Slough to Point Conception.

Some have tried to make the entire redistricting process about Isla Vista and UCSB. But redistricting should not be about moving a particular community out of a particular district it has always been in, in order to influence future elections. The area of coastline where Isla Vista and UCSB are located, has been a part of the Third District for 137 years.

Although some might wish certain parts of our community to have diminished electoral The point is to represent all the County in all its diversity. Supervisors who represent diverse districts are more likely to understand the multitude of issues that confront Santa Barbara County residents and that are brought to the Board of Supervisors.

Rather than turn the entire county topsy-turvy with a map that disrupts every district with questionable benefit, please consider how Map 809 or Map 818, or a combination of the

best elements of both maps, can result in a map that efficiently addresses the great majority of your goals and comports with the legal requirements of your very challenging responsibility.

Thank you for your consideration,

J. Lansing Duncan

From: [John Douglas](#)
To: [CEO Redistricting RES](#)
Subject: Written Comment for Santa Barbara County Redistricting Decisions
Date: Sunday, November 21, 2021 3:12:39 PM

Caution: This email originated from a source outside of the County of Santa Barbara. Do not click links or open attachments unless you verify the sender and know the content is safe.

Santa Barbara Redistricting Commission

Commissioners:

In your county redistricting decisions, I urge you to adopt map 818 and some elements of maps 801C and 816B.

As a long time resident of the south coast, I am concerned that moving Isla Vista/UCSB and western Goleta into the 2d District would change the voting year for over 30,000 people, needlessly disrupting their voting patterns. In the case of the students, it would take them out of the presidential year voting cycle, which is likely to reduce their participation. We should be dedicated to increasing voter and community participation among young people; it's why California has voter registration for 16 and 17 year olds when they get their driver's licenses, to increase their likelihood of becoming voters when they turn 18.

Isla Vista has been in the 3d District as long as anyone can remember. For those who say that IV somehow reduces the power of Santa Ynez Valley residents, I would point out that almost every supervisor elected over the past 30+ years has been from the valley. So I agree with how all these maps keep IV and UCSB together with western Goleta and in the third district.

I do not believe in making too much change if it can be avoided, which is why I like other elements of 816B, like how it retains key features for the 1st and 2nd districts. But it reduces the chances of a strong majority-minority district for the county by not putting Guadalupe with Santa Maria. That is why I am not supporting maps that put Guadalupe in the 4th district either. Guadalupe voters should not be buried by white suburban and rural voters.

Map 818 makes acceptable changes by putting the more densely populated parts of Lompoc with the south coast. Since Lompoc connects north and south county, this makes sense. It should also make Lompoc

voters feel less isolated from the rest of the county.

I hope you will choose a map that supports strong majority-minority districts by connecting communities of interest, while minimizing unnecessary disruptions.

Thanks for considering my views.

John Douglas
Santa Barbara

--

John Enrico Douglas
(805) 284-2082
jed805@gmail.com
www.JohnEDouglas.com

From: [John Duncan](#)
To: [CEO Redistricting RES](#)
Subject: Addendum to Map 819 and 818 Comment
Date: Sunday, November 21, 2021 3:14:54 PM

Caution: This email originated from a source outside of the County of Santa Barbara. Do not click links or open attachments unless you verify the sender and know the content is safe.

For some reason a sentence was dropped from my first paragraph. This is how it should read:

Dear Commissioners,

I hope you have had the opportunity to read my previous letter regarding the merits of Map 818 and how small modifications to it could result in an even better map, while addressing your commissions preference for north county representation of Cuyama. This link shows that revision and small modifications that reduce the number of split places to 4, simplify boundaries and improve the population deviation.

Thank You

J. Lansing Duncan

From: [John Evarts](#)
To: [CEO Redistricting RES](#)
Subject: Comments on Proposed Redistricting Maps
Date: Sunday, November 21, 2021 3:49:39 PM

Caution: This email originated from a source outside of the County of Santa Barbara. Do not click links or open attachments unless you verify the sender and know the content is safe.

Dear Redistricting Commission Members,

Thank you for your work on this difficult task. I've been a resident of the Santa Ynez Valley, and registered voter in the Third District, for 36 years. In reviewing the 10 Focus maps, I would like to express my support for either Map 818 or Map 816B.

Both maps propose minor changes to our Third District lines, but more importantly, these maps recognize that the Santa Ynez Valley and Gaviota Coast are communities of common interest due to their widespread agricultural zoning that permits and encourages farming, ranching, viticulture, and rural tourism. I served for nine years on the Santa Ynez Valley General Plan Advisory Committee, two years on the Santa Ynez Valley Blueprint (to which I am signatory), and two years on the County's Oak Collaborative, which was based in the Valley and laid the groundwork for Santa Barbara County's Oak Protection Ordinance. Throughout all these citizen-based deliberative processes, it was essential that the Valley and Gaviota Coast were encompassed in one district due to our common interests and rural values — and the incalculable value that only one Supervisor represented the entire area.

On a more personal level, both of my children, who were raised here in the Valley, spent their summers attending (and later teaching) Jr. Lifeguards in the Refugio State Beach section of California's Jr. Lifeguard programs. The majority of the children attending the Refugio program came from the Valley and many of them developed deep connections to the Gaviota Coast's beaches and marine areas. The Santa Ynez Valley Natural History Society, to which I belong, is dedicated to nature education in the Santa Ynez Valley region, but it offers field trips primarily in the Valley *and* the adjacent Gaviota Coast. The links between these two sides of the mountains run deep, and any map that truncates or splits them would cleave apart communities that share geographic, economic, social, cultural, and political currency.

If the Valley and Gaviota Coast remain united, what are the best options for rounding out the necessary voting population in the Third District? Again, both map 818 and 816B offer the best and least-disruptive choices. Yes, Isla Vista is a different world than the Valley, but in my mind, so are many other urban areas of the County. And there are political benefits: the conservative leaning rural and suburban areas of the current Third District are balanced by the more liberal and urban areas of Isla Vista. Since both regions are largely unincorporated, there is some extra commonality in having them combined in one Supervisorial District, as opposed, for example, to combining the Valley with a larger incorporated city like Goleta or Lompoc. Some may say that Isla Vista has no common ground with the Valley, but for a parent like me, whose son attended UCSB for four years and lived in Isla Vista, I don't consider Isla Vista such an alien place. UCSB also has other strong ties to the Valley, such as the Valley's UC Sedgwick Reserve, where many local residents serve as docents.

In summary, when it comes to redistricting options for Santa Barbara County, I would argue that we do not need to make extensive adjustments to the Third District lines nor to

toss out the political "balancing act" between the Valley, Gaviota Coast and Isla Vista, which has served us well. The Third District has been the County's swing district for decades, and that is to be applauded rather than abandoned. Maps 816B and 818 will help continue that reality.

Sincerely,

John Evarts
1875 Still Meadows Rd.
Ballard, CA 93463

From: [Steve Decker](#)
To: [CEO Redistricting RES](#)
Subject: Santa Barbara County Redistricting
Date: Friday, November 19, 2021 12:35:14 PM

Caution: This email originated from a source outside of the County of Santa Barbara. Do not click links or open attachments unless you verify the sender and know the content is safe.

Dear Commissioners,

Please know that the inclusion of the Isla Vista area and U.C. Santa Barbara in the third district has never made sense. The people who live in this area, either permanently or temporarily, have no practical interest in the rest of the third district north of their location. The rest of the voters are consistently out voted by the voters in Isla Vista. It is unfair. The Isla Vista voters are better served to be included in the Second District. And, thereby allowing the rest of the voters in the Third District to vote in their best interests.

Also, I fully support maps #804, 404, 103 and 106 for final consideration.

Respectfully,

photo



STEVE DECKER

Owner/Broker at NextHome Preferred Properties

CASAN Collection Luxury Home Marketing

M 805 708-6400 **E** steve@nhdr.net

W nhpp.re

W joinnhpp.today



From: [Nancy R](#)
To: [CEO Redistricting RES](#)
Subject: Santa Barbara County redistricting
Date: Sunday, November 21, 2021 4:41:01 PM

Caution: This email originated from a source outside of the County of Santa Barbara. Do not click links or open attachments unless you verify the sender and know the content is safe.

To the Redistricting Commission:

I would like to express my support for map 818. I believe it best serves the interests of the residents of Santa Barbara County.

The 1st district is similar to our current first district, which works well for its residents. Minority voting power is enhanced by having Carpinteria and the 'flatlands' of Santa Barbara (all working class/renter/minority) together. And the residents of Cuyama appreciate being with Carpinteria and other areas with GSAs dealing with serious groundwater issues! Cuyama is so far from the rest of the county that I'm not sure it matters if it is in the 5th district with Santa Maria.

The 2nd district should also remain close to as-is, as it works well, and is manageable in size.

The 3rd district is always a bone of contention in Santa Barbara County. But it has long had the Valley and the western Goleta/University/Isla Vista community combined, as long as any of us can remember. This is necessary to provide population numbers for the Valley, which is otherwise too thinly populated. I think it makes a lot of sense to connect it to part of Lompoc also, as that would provide more minority voting power for those residents and residents of IV and the working and minority residents of Goleta.

I know less about the north county but it looks to me like map 818 makes sense for the 4th and 5th districts as well.

Sincerely,

Nancy Robins
Santa Barbara

From: [Carla Frisk](#)
To: [CEO Redistricting RES](#)
Subject: Santa Barbara County Redistricting comment
Date: Sunday, November 21, 2021 4:54:57 PM

Caution: This email originated from a source outside of the County of Santa Barbara. Do not click links or open attachments unless you verify the sender and know the content is safe.

SB County Redistricting Commission:

As a former long-time resident of the Santa Ynez Valley, I want to express my support for the adoption of Maps 818, which keeps the Santa Ynez Valley, the Gaviota Coast and the community of Isla Vista in the same supervisorial district, as they have been for decades. In addition, this map achieves the goal of creating a Guadalupe / Santa Maria Fifth District with a Latino supermajority.

In addition, Map 818 respects the Chumash belief that their cultural lineage is connected from north to south, from Point Conception to the Goleta Slough because it contains the bulk of this area (including Isla Vista, the Gaviota Coast and the Santa Ynez Valley. While at first blush, these areas may appear to be diverse, however, such is the case with all supervisorial districts as Santa Barbara County is a diverse county.

Finally, as required, these communities are geographically contiguous.

Again, I am urging the Commission to adopt Map 818, or in the alternative, Map 816B which attains most of the benefits noted above.

Sincerely,

Carla Frisk
2830 Kenmore Place
Santa Barbara, CA 93105

From: [Julie Bischoff](#)
To: [CEO Redistricting RES](#)
Subject: Redistricting of Santa Barbara County
Date: Sunday, November 21, 2021 4:55:38 PM

Caution: This email originated from a source outside of the County of Santa Barbara. Do not click links or open attachments unless you verify the sender and know the content is safe.

Dear Redistricting Commissioners,

Thank you for all the time you are taking to hear our concerns about the districts of Santa Barbara County.

I live near Turnpike Ave. I grew up in Santa Barbara, attending SBHS, SBCC, and UCSB. When I drive over the Santa Ynez Mountains on 154 it is entering into a very different environment, whether it is going over 154 or going North on 101. Santa Ynez, Buellton, Lompoc and Solvang are rural areas with lots of open spaces and agricultural interests. The divide is easy to see and feel.

Please do not put UCSB and Isla Vista students with the communities “over the hill”. They need their own representation and district on the Board of Supervisors.

Please do what is right for all the communities involved.

Thank you,

Julie Bischoff

Santa Barbara, CA

From: [Teresa McNeil MacLean](#)
To: [CEO Redistricting RES](#)
Subject: My Preferred Map
Date: Sunday, November 21, 2021 5:12:42 PM

Caution: This email originated from a source outside of the County of Santa Barbara. Do not click links or open attachments unless you verify the sender and know the content is safe.

re: Santa Barbara County Redistricting Project & Maps

To whom it may concern:

I sent a previous letter asking that the Santa Ynez Valley remain together in the same district, and said I preferred Map #816. My updated preference is:

First Choice #818

(Second Choice #816B)

Sincerely, Teresa McNeil MacLean
Santa Ynez

From: [GARY MINAR](#)
To: [CEO Redistricting RES](#)
Subject: Redistributing
Date: Thursday, November 18, 2021 1:03:33 PM

Caution: This email originated from a source outside of the County of Santa Barbara. Do not click links or open attachments unless you verify the sender and know the content is safe.

I support 804, 404, 103 and 106 plans in order to remove the impact of the University complex from county control. We know that they mostly live outside the county and do not contribute to our community with taxes.

From: [claudette.roehrig](#)
To: [CEO Redistricting RES](#)
Subject: Redistributing
Date: Sunday, November 21, 2021 5:18:56 PM

Caution: This email originated from a source outside of the County of Santa Barbara. Do not click links or open attachments unless you verify the sender and know the content is safe.

Dear Commissioners,

I am a long-term resident of the Santa Barbara second district and I am emailing to express a preference for maps that do not make major changes to my current district. That would include 818 and 816B.

Our current district makes a lot of sense in terms of geography and population. We all have a connection to both Goleta and Santa Barbara. And our district is not spread out which makes it better since our supervisor doesn't have to spend so much time traveling to different areas.

I also want to say that I don't think it makes sense to try to put the University and city college together or to create a district that puts all of the schools in higher education together. They are all very different and most of them are not residential but serve people living all over the area. I think the suggestion to do that is just an excuse to try to dilute the voting power of students by putting them all together in one district that is already more Democratic.

Thank you.

Claudette Roehrig

From: [Mac Duncan](#)
To: [CEO Redistricting RES](#)
Subject: Redistricting Maps Citizen Input
Date: Sunday, November 21, 2021 5:48:05 PM

Caution: This email originated from a source outside of the County of Santa Barbara. Do not click links or open attachments unless you verify the sender and know the content is safe.

Dear Commissioners,

I grew up in the Santa Ynez Valley and am currently a resident of Santa Ynez. After looking at the redistricting maps, I support map 818 which keeps the historical connection of the Santa Ynez Valley to Isla Vista and UCSB, respecting the request of the Santa Ynez Band of Chumash to maintain the connection of the Santa Ynez Valley to the county's south coast. I would also support maps 816B and 809.

Thank you for your hard work, and for your careful consideration of citizen input,
Mary Mackenzie Duncan
Santa Ynez

From: [Deborah Hall](#)
To: [CEO Redistricting RES](#)
Subject: I support maps 818 & 816B
Date: Sunday, November 21, 2021 7:23:11 PM

Caution: This email originated from a source outside of the County of Santa Barbara. Do not click links or open attachments unless you verify the sender and know the content is safe.

To the Redistricting Commission:

I lived in the Santa Ynez Valley for 25 years, running my winery, vineyards and raising my family. I only recently moved to Santa Barbara to be near my grandchildren.

I disagree with those who claim that Santa Ynez Valley residents do not want to be linked to Isla Vista and feel they should have an all-agricultural all-rural district. Many of us feel that it makes a lot of sense to have a 3rd district that connects the Valley with the south coast.

The Valley is much more diverse in its own right than some would like to believe: we have working class renters and Latino community members scattered throughout Santa Ynez, Solvang, and Buellton, and they have a lot in common with Isla Vista and Goleta. As the Valley became more modernized, with the wine industry (the growth of which exploded over the past two decades) and now cannabis, the Valley has much more in common with Goleta, Isla Vista, and the Gaviota coast than back when there was a clearer difference between inland agriculture and the more urban coastal area. Indeed, tourism has become increasingly important in the Valley, as it already is on the south coast.

With so much in common, it has made sense to have a mixed district, because our interests are not simply inland/agricultural vs. coastal/urban anymore.

For that reason I support maps 818 and 816B.

Sincerely,

Deborah Hall
Santa Barbara

Sent from my iPhone

From: [Jacob Bates](#)
To: [CEO Redistricting RES](#)
Subject: Redistricting
Date: Friday, November 19, 2021 5:14:06 AM

Caution: This email originated from a source outside of the County of Santa Barbara. Do not click links or open attachments unless you verify the sender and know the content is safe.

Dear Commissioners,

I am writing in support of maps #804, 404, 103, and 106 to be considered for final adoption. We want cities kept whole as possible and we do not want IV and UCSB placed into a North County District.

Sincerely,

Jacob Bates
7796 Paxton Ct
Goleta, CA 93117
805-245-0639

Sent from my iPhone

From: [patriciaforrest47](#)
To: [CEO Redistricting RES](#)
Subject: Redistricting
Date: Friday, November 19, 2021 1:57:20 PM

Caution: This email originated from a source outside of the County of Santa Barbara. Do not click links or open attachments unless you verify the sender and know the content is safe.

Dear Commission Members,

Now that the Commission has dramatically reduced the number of maps being considered in making your redistricting decisions down to a manageable 10, I wanted to share a few reactions to those that remain.

1. I live in Goleta and have been happy to have 2 supervisors, from the second and third district, representing Goleta's concerns and available to address issues I might have. I think that is a plus for people who live in Goleta and makes a great deal of sense. I think the same would be true for other areas as well.
2. I've also been happy to have UCSB and IV in the Third District as they have been for all the years I've lived here and even before. I believe that the residents of Isla Vista and UCSB should remain in the Third District. They have a lot in common with the renters who make up a large part of the population of the Ellwood area of Goleta. And Western Goleta is the area most impacted by students and faculty of UCSB.
3. I've lived in Goleta through many supervisor elections and don't think it has hurt Goleta that the Supervisors we have had for decades all come from the Santa Ynez Valley. I think keeping Goleta with the Valley provides a good mix of people and places.
4. Some of the maps propose huge changes to who is in each district and I think it would be better for as many people as possible to stay in the same district they are in right now.

I support the maps that accomplish this and thank you for giving them careful consideration.

Sincerely,

Pat Forrest, Goleta resident

Sent from my T-Mobile 4G LTE Device

From: [Max Golding](#)
To: [CEO Redistricting RES](#)
Subject: Redistricting
Date: Sunday, November 21, 2021 5:34:26 PM

Caution: This email originated from a source outside of the County of Santa Barbara. Do not click links or open attachments unless you verify the sender and know the content is safe.

Dear Commissioners,

Now that you have whittled the 100 or so maps submitted down to a manageable number, I feel able to comment.

I know that you prefer comment in favor of specific maps, but I want to point out some problems with your focus maps first:

1) It makes no sense to pack the colleges into a single district, as some try to do. Not only does that not result in a compact district, but it makes no sense substantively. Having attended UCSB and lived in IV, I can tell you that it is very different, as a four-year residential university, than SBCC or Antioch, which are commuter schools serving local residents who live all over Santa Barbara, Goleta, etc. Yes, some SBCC students live in IV, but not enough to justify this approach. As for the rest, even if you put the campuses in the same district, you would likely not put most of the student-voters in that district, so you would have gerrymandered to no purpose.

2) the huge rural district in some maps, like 821B, is just too big. It's the only district which is designed to serve a single interest group, and it definitely comes at the expense of compactness. I appreciate that rural and agricultural interests would like to be kept together, but no other district can be a special-single-interest district, so this one shouldn't be either.

3) As I understand it, Cuyama residents want to be in the 1st or 5th districts because of shared concerns about water. Yet several of the selected maps put it in the 4th, which also just makes that district too geographically large.

If the goal is to keep communities of interest together, and empower more majority-minority voting, then map 818 is the best choice. Map 801C does a good job with its 5th District, but it actually reduces the voting power of south coast communities of interest by separating Carp from the combined eastside/westside area (where I currently live). In 801C, Carp would be silenced by the wealthier white property owning voters. Also, that district is not compact as it goes around Santa Barbara to get to the Valley.

Map 818 does the best job of protecting and connecting communities of interest throughout the County, keeping districts compact and contiguous, and respecting traditional relationships, like the Chumash connection between the valley and the coast.

I do appreciate all your hard work, and hope that you can find a map that best serves us all!

Max Golding

From: [Steve Daniels](#)
To: [CEO Redistricting RES](#)
Subject: Redistricting
Date: Sunday, November 21, 2021 7:40:15 PM

Caution: This email originated from a source outside of the County of Santa Barbara. Do not click links or open attachments unless you verify the sender and know the content is safe.

As a resident of the Second District of S.B. County, and an affiliate of UCSB, I urge you to adopt Map 818 or Map 816B.

It is important to keep the Gaviota Coast connected with the Santa Ynez Valley and retain Isla Vista and UCSB in the Third District. Keeping the S.Y. Valley and its watershed intact is also salient.

Thank you.

Steve Daniels
Santa Barbara

From: [Victor Lund](#)
To: [CEO Redistricting RES](#)
Subject: redistricting
Date: Monday, November 22, 2021 7:51:17 AM

Caution: This email originated from a source outside of the County of Santa Barbara. Do not click links or open attachments unless you verify the sender and know the content is safe.

Dear Commissioners,

I have been following the redistricting efforts and appreciate your work and contributions.

We are in support of maps #106, 103, 404, and 804 for final adoption.

Please understand that Isla Vista and UCSB are vastly different communities than the rest of north county and Lompoc. Any effort to merge them can only be understood as gerrymandering and an offense to the residents of all three communities.

Victor Lund

From: [Kym Paszkeicz](#)
To: [CEO Redistricting RES](#)
Subject: In support of 801C
Date: Monday, November 22, 2021 8:09:14 AM

Caution: This email originated from a source outside of the County of Santa Barbara. Do not click links or open attachments unless you verify the sender and know the content is safe.

Hello Citizens Independent Redistricting Commission,

I want to voice my support for Map 801C because it creates the strongest Latino representation countywide. It unites Santa Barbara County's largest Latino communities together in three different districts: Eastside together with Westside Santa Barbara in the 1st district, Lompoc together with Old Town Goleta in the 3rd, and Santa Maria with Guadalupe in the 5th. Of the five frontrunner maps identified by the commission last Thursday, it has the highest Latino voter population in all three of these districts. That's why it's supported by the county's largest Latino community organizations.

The purpose of a citizens' commission is to allow the community a voice in the redistricting process. It would send a truly disheartening message if the map with more members of the public speaking in support than any other wasn't even chosen as one of the five focus maps to move forward for discussion. We strongly urge you to respect the community engagement process and include Map 801C as one of the focus maps.

Best,

--

Kym Paszkeicz (she/her)
kympasz@gmail.com
805 448-3067

"Hope is invented every day." ~ James Baldwin