

From: [Glenn Morris](#)
To: [CEO Redistricting RES](#)
Subject: Fwd: Letter to Commissioners
Date: Friday, December 3, 2021 5:02:11 PM
Attachments: [image001.png](#)
[Dear Commissioners.docx](#)

Caution: This email originated from a source outside of the County of Santa Barbara. Do not click links or open attachments unless you verify the sender and know the content is safe.

----- Forwarded message -----

From: Kathy Vreeland <kathy@buellton.org>
Date: Dec 3, 2021 16:56
Subject: Letter to Commissioners
To: Glenn Morris <glenn@santamaria.com>
Cc:

Hi Glenn,

Please find attached a letter to the Commissioners for tomorrow's meeting. I'm not able to be on zoom, but I do hope the Commission finds Map 822 viable and the proper option to proceed with.

Thank you for your time to this process.

Kathy



Kathy Vreeland

Executive Director

597 Avenue of Flags, Unit 101
PO Box 231
Buellton, CA 93427

O: 805.688.7829

F: 805.688.5399

www.DiscoverBuellton.com

www.Buellton.org

[COVID-19 Resources and Information](#)

[#TogetherApart](#)

Dear Commissioners,

I appreciate your time and dedication to this process, it is long overdue and although grueling and overwhelming, it is very detrimental to the future of our county.

In listening to past meetings and the issues at hand, it seems very clear that map 822 will accommodate most if not all requests and bring a unified voice to our county. This map also makes the most sense when looking at the demographics and common interests in all districts.

I would encourage the commission to adopt map 822 as it equally divides the county and will lead to a unified voice across the districts.

Thank you for your time and consideration.

Sincerely,

Kathy Vreeland, Buellton Chamber of Commerce

From: [Heather J. Rose](#)
To: [CEO Redistricting RES](#)
Subject: Please support Map 821
Date: Friday, December 3, 2021 4:17:51 PM

Caution: This email originated from a source outside of the County of Santa Barbara. Do not click links or open attachments unless you verify the sender and know the content is safe.

Dear Redistricting Committee,

I am writing as a long time resident of Santa Barbara (both the East and Westside neighborhoods over the years) and also I have been an instructor at SBCC for over a decade.

- **I support Finalist 821** because it keeps Santa Barbara City College with downtown unlike map 822. SBCC is literally the community's college and should be kept with the main downtown areas of Santa Barbara.
- 821 also honors the wishes of the Chumash to have their reservation included in the 3rd district.
- I oppose map 818 because it puts Isla Vista not only with Santa Ynez but also Orcutt, **student and renter voices will be completely drowned out** in this district. Similarly map 822 would do the same by pairing Isla Vista with Hope Ranch. **Please vote for map 821.**
- Map 821 also honors our northern neighbor farmers with the chance for appropriate representation that they are long overdue.

If you do not choose map 821 please make sure to at least alter the chosen map to create a 5th district that unites Santa Maria and Guadalupe because **Since the beginning of this process people from Santa Maria and Guadalupe have requested to be united in the 5th district**

Thank you for your service.
Sincerely,
Dr. Heather J Rose

From: [Ras Yaser](#)
To: [CEO Redistricting RES](#)
Subject: Please support Map 821
Date: Friday, December 3, 2021 5:02:28 PM

Caution: This email originated from a source outside of the County of Santa Barbara. Do not click links or open attachments unless you verify the sender and know the content is safe.

Dear Redistricting Committee,

I am writing as a long time resident of Santa Barbara (both the East and Westside neighborhoods over the years) and also I have worked at SBCC for over a decade.

- **I support Finalist 821** because it keeps Santa Barbara City College with downtown unlike map 822. SBCC is literally the community's college and should be kept with the main downtown areas of Santa Barbara.
- 821 also honors the wishes of the Chumash to have their reservation included in the 3rd district.
- I oppose map 818 because it puts Isla Vista not only with Santa Ynez but also Orcutt, **student and renter voices will be completely drowned out** in this district. Similarly map 822 would do the same by pairing Isla Vista with Hope Ranch. **Please vote for map 821.**
- Map 821 also honors our northern neighbor farmers with the chance for appropriate representation that they are long overdue.

If you do not choose map 821 please make sure to at least alter the chosen map to create a 5th district that unites Santa Maria and Guadalupe because **Since the beginning of this process people from Santa Maria and Guadalupe have requested to be united in the 5th district**

Thank you for your service.
Jesse Felix

From: [Jen Lemberger](#)
To: [CEO Redistricting RES](#)
Subject: Support for Redistricting Map Finalist 821
Date: Friday, December 3, 2021 5:07:57 PM

Caution: This email originated from a source outside of the County of Santa Barbara. Do not click links or open attachments unless you verify the sender and know the content is safe.

To the County of Santa Barbara Citizens Independent Redistricting Commissioners:

As an individual deeply interested in fair representation in our government, I want to first thank all of the Commissioners for the massive amount of time and brain power that has been invested in the process of redistricting for Santa Barbara County.

I am writing today as a resident of the Eastside of Santa Barbara and the current First District. To truly look towards equitable representation at the County Board of Supervisors level I support the map Finalist 821.

This map keeps SBCC with the downtown Santa Barbara area, representing working class families, renters, and many of the families that send their children to the community college.

Map 821 also keeps the Chumash reservation in the 3rd district, as asked by their members.

Map 821 allows renter voices to be more fully heard, from downtown Santa Barbara to Isla Vista to Lompoc to swaths of Santa Maria. With Map 821 they will not be lost in comparison to Santa Ynez, Orcutt, and Hope Ranch homeowners.

If another map is chosen, it is imperative that the fifth district be taken as represented in the previous maps 821C and original 818. This brings the communities of interest in Guadalupe and Santa Maria together so as to best represent the voices of farmworkers, immigrant communities, and others.

Again, I thank you for your time, and look forward to a more representative Board of Supervisors based on the decisions you all will be making for the future of Santa Barbara County.

Jen Lemberger

--

Man cannot discover new oceans unless he has the courage to lose sight of the shore.
- Andre Gide

From: [Gregory Feitt](#)
To: [CEO Redistricting RES](#)
Subject: County Redistricting support for map 821
Date: Friday, December 3, 2021 5:08:29 PM

Caution: This email originated from a source outside of the County of Santa Barbara. Do not click links or open attachments unless you verify the sender and know the content is safe.

As a constituent from County district 1, I support map 821 as it helps to ensure a 5th district that gives a voice to the large population of Latino voters in the North County who will be underrepresented with other map choices. I support it also because it keeps SB City College combined with our downtown district in Santa Barbara. Furthermore, it honors the wishes of the Chumash to be a part of district 3.

Sincerely,

Greg Feitt
District 1

From: [Jerry Rounds](#)
To: [CEO Redistricting RES](#)
Subject: Please approve map 822
Date: Friday, December 3, 2021 4:54:34 PM

Caution: This email originated from a source outside of the County of Santa Barbara. Do not click links or open attachments unless you verify the sender and know the content is safe.

Dear Redistricting Committee,

I am a 30 year resident of Santa Ynez. Previously I lived in Montecito and before that, Isla Vista. I support map 822 which offers a more even blend of unified communities. Residents of the Lompoc and Santa Ynez Valley include older residents, retirees, farmers, and ranchers, and those seeking a quiet place to live, while Isla Vista is full of young naïve idealists more familiar with the urban environment.

Please remove Isla Vista/UCSB from District 3 and placing it with South County where they have numerous common interests. Support map 822.

Sincere regards,

Gerald Rounds

East Oak Trail Road

Santa Ynez, CA 93460

From: [Bobbi McGinnis](#)
To: [Jerry Rounds](#)
Cc: [CEO Redistricting RES](#)
Subject: Re: Please approve map 822
Date: Friday, December 3, 2021 5:10:26 PM

Caution: This email originated from a source outside of the County of Santa Barbara. Do not click links or open attachments unless you verify the sender and know the content is safe.

Thank you Jerry!

On Fri, Dec 3, 2021 at 4:54 PM Jerry Rounds <blueray@silcom.com> wrote:

Dear Redistricting Committee,

I am a 30 year resident of Santa Ynez. Previously I lived in Montecito and before that, Isla Vista. I support map 822 which offers a more even blend of unified communities. Residents of the Lompoc and Santa Ynez Valley include older residents, retirees, farmers, and ranchers, and those seeking a quiet place to live, while Isla Vista is full of young naïve idealists more familiar with the urban environment.

Please remove Isla Vista/UCSB from District 3 and placing it with South County where they have numerous common interests. Support map 822.

Sincere regards,

Gerald Rounds

East Oak Trail Road

Santa Ynez, CA 93460

--

R.Bobbi McGinnis
Century 21 Butler Realty, Inc.
1635 State St.
Santa Barbara, Ca. 93101
DRE Lic.00628934
Ph.805 680-6921
Fx.805 569-0591

From: [Ron Palladino](#)
To: [CEO Redistricting RES](#)
Subject: Re districting
Date: Friday, December 3, 2021 5:45:27 PM

Caution: This email originated from a source outside of the County of Santa Barbara. Do not click links or open attachments unless you verify the sender and know the content is safe.

Dear Commissioners,

Throughout the course of your many months of service, you have stated time and time again, that commissioners would NOT draw their own maps. Instead, they would “adjust” maps as necessary based on final commission deliberations.

Unfortunately, Map 818 is an aberration of your intentions. No one from the public requested that Orcutt be placed in the same district as Isla Vista and UCSB!

This version of Map 818 came from one commissioner only and not the public.

This late in the process, the community should not have been shocked at the last minute by way of this commissioner drawn and submitted map!

Orcutt, the Santa Ynez Valley and IV/UCSB are disparate communities, not communities of interest.

Orcutt is primarily working class families.

SY Valley is a semi-rural community primarily comprised estates and vineyards with many retirees.

IV and UCSB are single students here on a temporary basis living in a densely populated coastal community.

Please reject map 818 from further consideration accordingly.

Furthermore, please place IV and UCSB in a south county district, where IT IS and where IT BELONGS!

Sincerely,
Ron Palladino
Santa Ynez Valley

Sent from my iPhone

From: [Gail Osherenko](#)
To: [CEO Redistricting RES](#)
Subject: 3 finalist maps
Date: Friday, December 3, 2021 5:47:45 PM
Attachments: [X0i6Spzrmy4Miw2y.png](#)

Caution: This email originated from a source outside of the County of Santa Barbara. Do not click links or open attachments unless you verify the sender and know the content is safe.

Dear Commission Members,

I am not able to attend the 12/4 meeting but wanted to share my thoughts with you re: the 3 Finalist plans posted at the website.

Of the three, 821C Rios is the best choice. It attempts to honor the wishes of most of the communities that have participated in this process. This includes shifting the Chumash Reservation into the 3rd District so that they can maintain a connection between their inland and coastal territories. But as it is drawn, I can not even support that map without tweaking.

A better version of 821c would also include changes suggested by a member of the public's adjustments, numbered as 88189 in District R. It moves the boundary between the 3rd and 4th districts on the western side to the actual western edge of the Santa Ynez Valley, at the 101. The currently drawn boundary is a natural feature, a creek, but the 101 is a more 'real' dividing line between the Valley and the area west of Buellton. Buellton should be drawn into the 4th district as it is in effect the western boundary of the Valley region. This then allows the area west, which is a separate wine appellation, to share a community of interest with the adjacent Lompoc wine regions (and the lovely wine ghetto in downtown Lompoc!)

I would also like to question the decision, apparently made after these 'finalist' plans were chosen on Wed. night, to change the district boundary between the 1st and 2nd districts in plan 822 finalist. I live in the Santa Barbara City, so this matters to me personally. This adjustment moves a lot of voters currently in the 2nd district, north of State St. and for a small area, north as far as Los Olivos St., from one district into another. That means a different voting schedule, and the line change doesn't reflect the reality of those neighborhoods. Please restore that line to what it is in 822 Bray/Trosky/Turley, as pictured here:



Although this plan does move some people, the move is more logical, follows neighborhood boundaries, and is disruptive to fewer voters. Given the low population deviation in plan 822, there is no reason to move people for arbitrary and unnecessary reasons.

Thank you for your consideration.

Sincerely,

Gail Osherenko, J.D.
Santa Barbara CA

From: [Dustin Hoiseth](#)
To: [CEO Redistricting RES](#)
Subject: Plan 822 - Santa Barbara South Coast Chamber of Commerce
Date: Friday, December 3, 2021 6:32:32 PM
Attachments: [SBSCChamber_Final_Plan_822.pdf](#)

Caution: This email originated from a source outside of the County of Santa Barbara. Do not click links or open attachments unless you verify the sender and know the content is safe.

Dear Santa Barbara County Citizens Independent Redistricting Commission,

Attached is a letter detailing the Santa Barbara South Coast Chamber of Commerce's support of Plan 822.

Thank you,

[DUSTIN HOISETH](#) | Public Policy Manager
SANTA BARBARA SOUTH COAST CHAMBER OF COMMERCE
(805) 967-2500 | Dustin@SBSCChamber.com



805.967.2500

www.SBSCChamber.com

Mailing Address: 5662 Calle Real #204, Goleta, CA 93117

Visitor Center: 120 State Street, St F, Santa Barbara, CA 93101

December 3, 2021

RE: Plan 822

Dear Chair Morris and the Santa Barbara County Citizens Independent Redistricting Commission:

The Santa Barbara South Coast Chamber of Commerce supports Plan 822 for final consideration. Of the remaining plans, 822 best preserves the integrity of our coastal communities by avoiding unnecessary splits along the coast. Plan 822 is also the only remaining plan that places Isla Vista in the same district as Santa Barbara, keeping our local college communities together. Unlike Plans 818 and 821, which draw districts spanning unnecessarily large geographic areas, Plan 822 avoids merging communities that have little in common geographically. Plan 822 instead draws succinct and common-sense boundaries across all five districts, which are the best representation of local communities that can be reached, given the restrictions of population distribution. Even still, Plan 822 manages to only have a population deviation of 0.07%. Overall, Plan 822 is the best remaining choice for maintaining community identity throughout Santa Barbara County, while still adhering to the proper guidelines of the redistricting process.

We hope the commission will take these points into consideration as they move forward with this important decision.

Thank you,

KRISTEN MILLER | President/CEO
SANTA BARBARA SOUTH COAST CHAMBER OF COMMERCE
(805) 967-2500 ext. 108 | Kristen@SBSCChamber.com

From: [janjurt](#)
To: [CEO Redistricting RES](#)
Subject: Redistricting concerns email
Date: Friday, December 3, 2021 6:36:18 PM

Caution: This email originated from a source outside of the County of Santa Barbara. Do not click links or open attachments unless you verify the sender and know the content is safe.

Dear County Commissioners,

I am a third generation Santa Barbara resident and feel the need to reach out to you to let you know my concerns regarding your redistricting maps.

I have been watching over the last few months when your commission has stated repeatedly that you would not draw your own maps for redistricting and that the current maps would be adjusted. Your comments on record have given me peace of mind -believing that the redistricting would serve the larger majority of Santa Barbara residents.

Unfortunately, Map 818 does not honor your previous verbal commitments.. Further I can't imagine how you would consider placing Orcutt in the same district as Isla Vista and UCSB.

In my opinion this is a last minute change order which I'm sure the public would not support and not do I.

Santa Ynez Valley is a semi-rural community primarily comprised estates and vineyards with many retirees.

Isla Vista and UCSB are primarily students here on a temporary basis living in a densely populated coastal community.

I sincerely request that you reject map 818 from further consideration accordingly.

Furthermore, I would please request that you place Isla vista and the University in a southern district where it currently is and where I truly feel it does continue to belong .

Thank you for your continued efforts in representing the people of this community and taking to heart the comments and wishes of our beautiful community and its residents.

Most Sincerely,

Joanna von yurt
Santa Barbara Calif

Sent from my iPhone

From: [Mikey](#)
To: [CEO Redistricting RES](#)
Subject: 822C
Date: Friday, December 3, 2021 6:36:51 PM

Caution: This email originated from a source outside of the County of Santa Barbara. Do not click links or open attachments unless you verify the sender and know the content is safe.

Please select map 822C, a responsible future today.

Thank you,
Michael C. Schaumburg
805 679-3068

From: [A Balliet](#)
To: [CEO Redistricting RES](#)
Subject: Please vote for map 822c
Date: Friday, December 3, 2021 6:38:02 PM

Caution: This email originated from a source outside of the County of Santa Barbara. Do not click links or open attachments unless you verify the sender and know the content is safe.

I would like to ask you to please vote for map 822c as I believe this one to be the most fair.
Thank you

Sent from my iPod

From: [Laurie Punches](#)
To: [CEO Redistricting RES](#)
Subject: Please do not accept unreasonable new redistricting
Date: Friday, December 3, 2021 6:39:03 PM

Caution: This email originated from a source outside of the County of Santa Barbara. Do not click links or open attachments unless you verify the sender and know the content is safe.

Dear Commissioners,
Why was Map 818 elected where the communities
when have very little to nothing in common with each other.
These districts are not adjacent but some over an hour away
from each other. Please end this insanity.
Bring back Map 822 where boundaries are shared
and interests whether school boards, parks, libraries,
water boards are shared concerns.
Thank-you for stopping these illogical, impractical boundaries
in new maps that make no sense.
Sincerely,
Laurie Punches

From: headfiddle@fiddleheadcellars.com
To: [CEO Redistricting RES](#)
Subject: Redistricting comment
Date: Friday, December 3, 2021 4:40:29 PM

Caution: This email originated from a source outside of the County of Santa Barbara. Do not click links or open attachments unless you verify the sender and know the content is safe.

To the County of Santa Barbara Redistricting Committee,

Fiddlehead Cellars and owner Kathy Joseph support map 822 for its social, economic, and demographic balance and because, 1) it places Isla Vista in a more appropriate district given that areas interest and 2) it reflects realities of land and people better in North County.

Best, KJ

Kathy Joseph
Fiddlehead Cellars
Owner-Winemaker
805-735-7728

From: [Maria Cincotta](#)
To: [CEO Redistricting RES](#)
Subject: redistricting comment
Date: Friday, December 3, 2021 6:48:48 PM

Caution: This email originated from a source outside of the County of Santa Barbara. Do not click links or open attachments unless you verify the sender and know the content is safe.

Hello,

I would like to ask you to please vote for map 822c, as I believe this one to be the most fair.

Sincerely,

Maria Cincotta

From: [Katie Hay](#)
To: [CEO Redistricting RES](#)
Subject: Redistricting alert
Date: Friday, December 3, 2021 7:27:06 PM

Caution: This email originated from a source outside of the County of Santa Barbara. Do not click links or open attachments unless you verify the sender and know the content is safe.

Dear Commissioners,

Throughout the course of your many months of service, you have stated time and time again, that commissioners would NOT draw their own maps. Instead, they would “adjust” maps as necessary based on final commission deliberations.

Unfortunately, Map 818 is an aberration of your intentions. No one from the public requested that Orcutt be placed in the same district as Isla Vista and UCSB!

This version of Map 818 came from one commissioner only and not the public.

This late in the process, the community should not have been shocked at the last minute by way of this commissioner drawn and submitted map!

Orcutt, the Santa Ynez Valley and IV/UCSB are disparate communities, not communities of interest.

Orcutt is primarily working class families.

SY Valley is a semi-rural community primarily comprised estates and vineyards with many retirees.

IV and UCSB are single students here on a temporary basis living in a densely populated coastal community.

Please reject map 818 from further consideration accordingly.

Furthermore, please place IV and UCSB in a south county district, where IT IS and where IT BELONGS!

Sincerely,

Best regards
Katie Hay
KHay@CCREmanagement.com

From: [Sheridan Rosenberg](#)
To: [CEO Redistricting RES](#)
Subject: REJECT MAP 818!!!!
Date: Friday, December 3, 2021 7:38:24 PM
Attachments: [image002.png](#)
Importance: High

Caution: This email originated from a source outside of the County of Santa Barbara. Do not click links or open attachments unless you verify the sender and know the content is safe.

Dear Commissioners,

Throughout the course of your many months of service, you have stated time and time again, that commissioners would NOT draw their own maps. Instead, they would “adjust” maps as necessary based on final commission deliberations.

Unfortunately, Map 818 is an aberration of your intentions. No one from the public requested that Orcutt be placed in the same district as Isla Vista and UCSB!

This version of Map 818 came from one commissioner only and not the public.

This late in the process, the community should not have been shocked at the last minute by way of this commissioner drawn and submitted map!

Orcutt, the Santa Ynez Valley and IV/UCSB are disparate communities, not communities of interest.

Orcutt is primarily working class families.

SY Valley is a semi-rural community primarily comprised estates and vineyards with many retirees.

IV and UCSB are single students here on a temporary basis living in a densely populated coastal community.

Please reject map 818 from further consideration accordingly.

Furthermore, please place IV and UCSB in a south county district, where IT IS and where IT BELONGS!

Sincerely,

Sheridan Rosenberg

Santa Barbara Aviation, Inc.
515 Marxmiller Place
Santa Barbara, CA 93117
(805) 967-9000 ext. 2
(805) 895-9758 cell
(866) 799-2456
sheridan@santabarbaraaviation.com
www.santabarbaraaviation.com

Santa Barbara **Aviation**



From: [Sarah Lyons](#)
To: [CEO Redistricting RES](#)
Subject: Support for Map 822 - Redistricting Plan Proposal
Date: Friday, December 3, 2021 8:16:52 PM

Caution: This email originated from a source outside of the County of Santa Barbara. Do not click links or open attachments unless you verify the sender and know the content is safe.

I support map 822 for both its social, economic, and demographic balance and because it places Isla Vista in a more appropriate district given that area of interest and it reflects realities of land and people better in north county.

Thank you,
Sarah Lyons
Owner
Lyons Vineyard

Sent from my iPad

From: [Ian Baucke](#)
To: [CEO Redistricting RES](#)
Subject: Letter to Commission - Public Comment for 12/4 Meeting
Date: Friday, December 3, 2021 11:01:49 PM
Attachments: [Letter to Redistricting Commission - Ian Baucke.pdf](#)

Caution: This email originated from a source outside of the County of Santa Barbara. Do not click links or open attachments unless you verify the sender and know the content is safe.

Hello,

If it's not too late please include this attached letter to the commission with the written public comment for tomorrow's meeting.

If this is no longer possible, please ensure that the letter is at least provided to the commissioners before the meeting. Please confirm receipt and thank you so much!

All the best,

Ian Baucke

Dear Chair Morris and Commissioners,

I am writing to you as a District 2 constituent, life-long Santa Barbara resident, and a recent graduate. I care deeply about young people like myself being adequately represented in local government, that is why I take the time to be engaged in processes like these.

That is also why **I strongly urge you to adopt the 821 map as your final map**. The public has provided the commission with many reasons as to why 821 is the strongest map in uniting diverse communities of interest and for the commission to meet its statutory obligations.

One compelling reason to support 821 is that it does a better job of creating renter-majority districts than the other two maps. Respectfully, statements made at the prior hearing that all maps were essentially equal in this respect do not paint the whole picture.

In map 821 the three renter-majority districts are 61%, 55%, and 53% renters, ensuring they are adequately represented in a majority of supervisorial districts, a compelling priority in our county. Meanwhile, map 818 creates districts that are 53%, 50%, and 50% renters respectively. In map 822 they are 53% 52% and 50%. As you know 50%, while close, is not a majority. **Map 821 is the only map to create three renter-majority districts.**

I also fear the 822 map's attempt to swap Isla Vista and Goleta into new districts does not serve either community well. I feel compelled to write this letter outlining why this change is unnecessary and counterproductive when compared to map 821 uniting Isla Vista with Lompoc, a community with far more similar interests to IV than the Santa Barbara neighborhoods to its east.

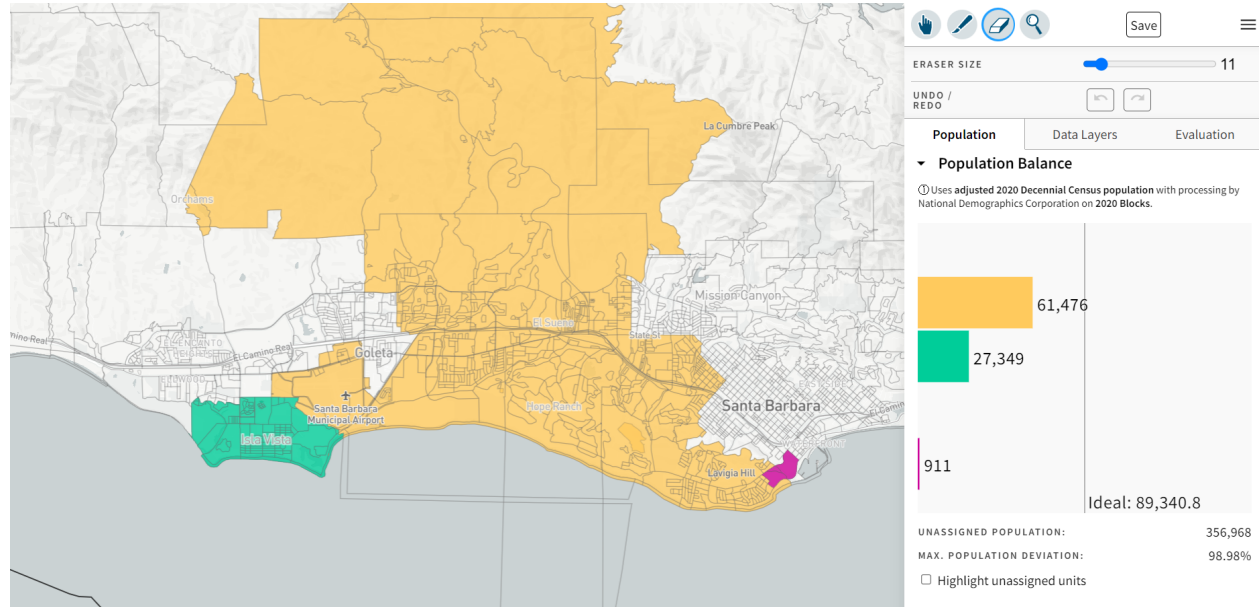
As a young resident of Hidden Valley, a Santa Barbara neighborhood between Hope Ranch and the Mesa, I know that Isla Vista has very little in common with my area. Proponents of map 822 claim moving Isla Vista into District 2 creates a "college district" where "students will finally have a voice." My lived experience informs me that this is simply not the case, and the data available to the commission proves this as well.

Below is the proposed "College District" in map 822. As you will see, according to the 2020 census, **the population of the Isla Vista area and UCSB is just over 27,000. The population of SBCC is 911.** This discrepancy reflects the fact that UCSB is a four-year residential university, while SBCC is a two-year commuter college that primarily serves students living in neighborhoods across the area. It does not serve Santa Barbara's students or the Isla Vista community to go against their express wishes to place them in a district otherwise dominated by some of the most dissimilar neighborhoods of the South Coast, just for the sake of reaching 911 people.

If the goal of 822's District 2 was to unite students, why does the district not include the denser, more diverse Santa Barbara neighborhoods where students are likely to actually reside? I don't need to tell you that neither the average SBCC nor UCSB student can afford to live in Hope

Ranch or The Mesa. This is not to mention that none of the three other institutions of higher education in the Santa Barbara area, serving thousands of students, are placed in 822's so-called "college district."

Population breakdown of Isla Vista + UCSB and SBCC in 822's "College District"



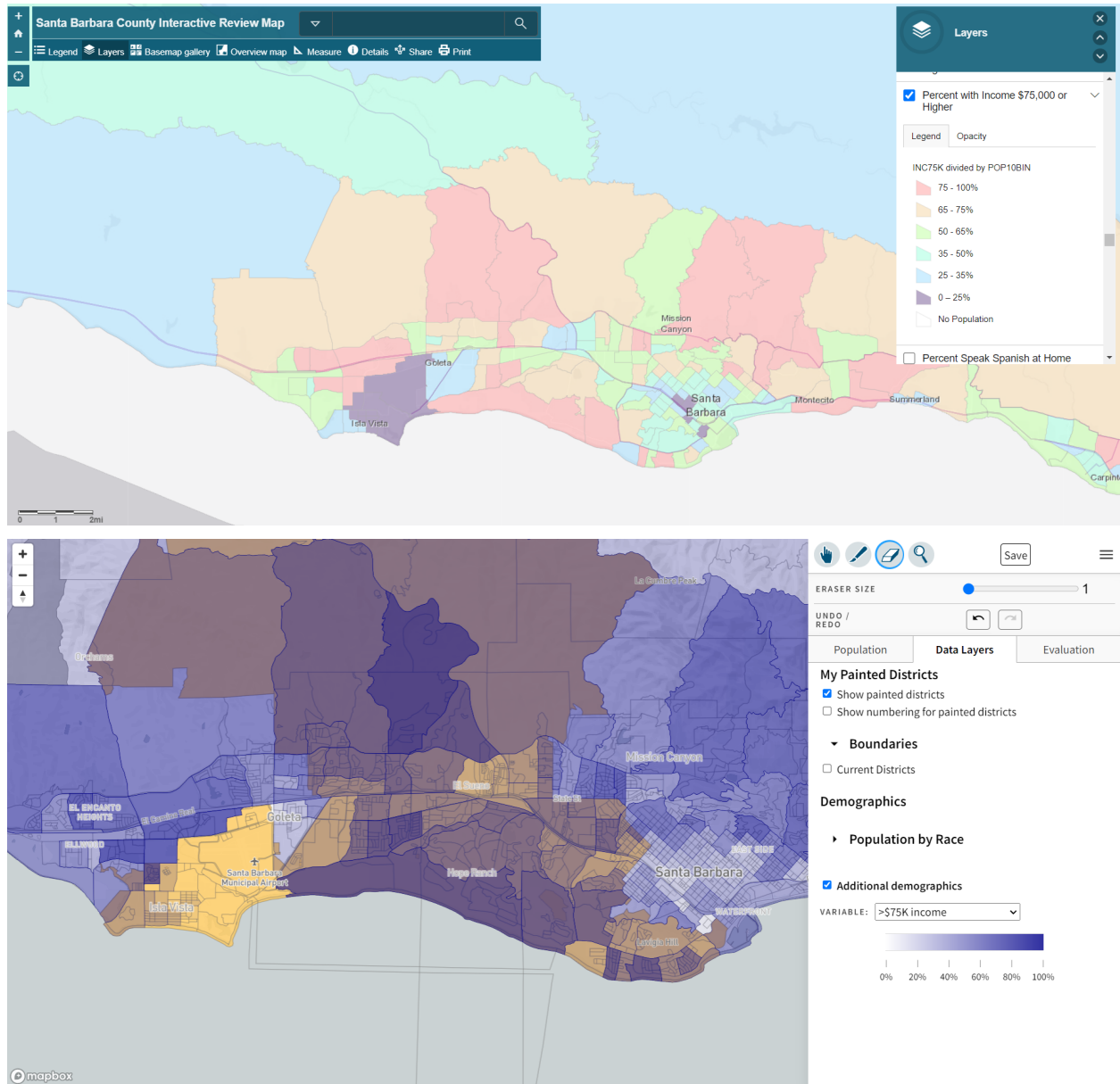
Worth noting is that the areas south of the 101 comprise a majority of the people in the yellow areas of the proposed district. As you will see, this area and much of the north Goleta Valley east of San Roque is far wealthier, whiter, and where residents are more likely to be single-family home owners than most of Santa Barbara County, especially distinct from the demographics of both Isla Vista and Lompoc.

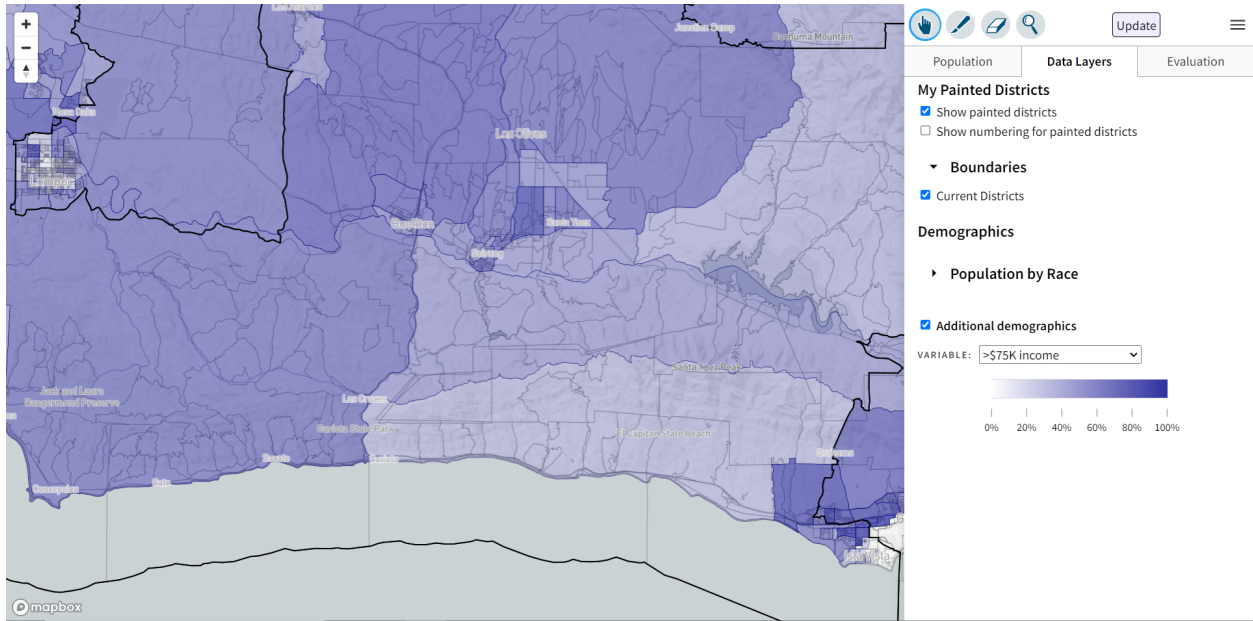
On the major issues facing Santa Barbara County residents, from housing to income, a data driven analysis overwhelmingly shows that Isla Vista has far more similar needs to Lompoc than Hope Ranch, Hidden Valley, The Mesa, and north Goleta Valley.

The UCSB Associated Students has made this abundantly clear to the commission. The City of Goleta has affirmatively opposed maps that put Isla Vista in District 2 and move Goleta into District 3. Why should the commission reject the lived experience and express wishes of these communities simply to appease residents of other communities seeking to exclude Isla Vista from shared representation? Why should tens of thousands of voters be moved into different election cycles to create districts on a false premise?

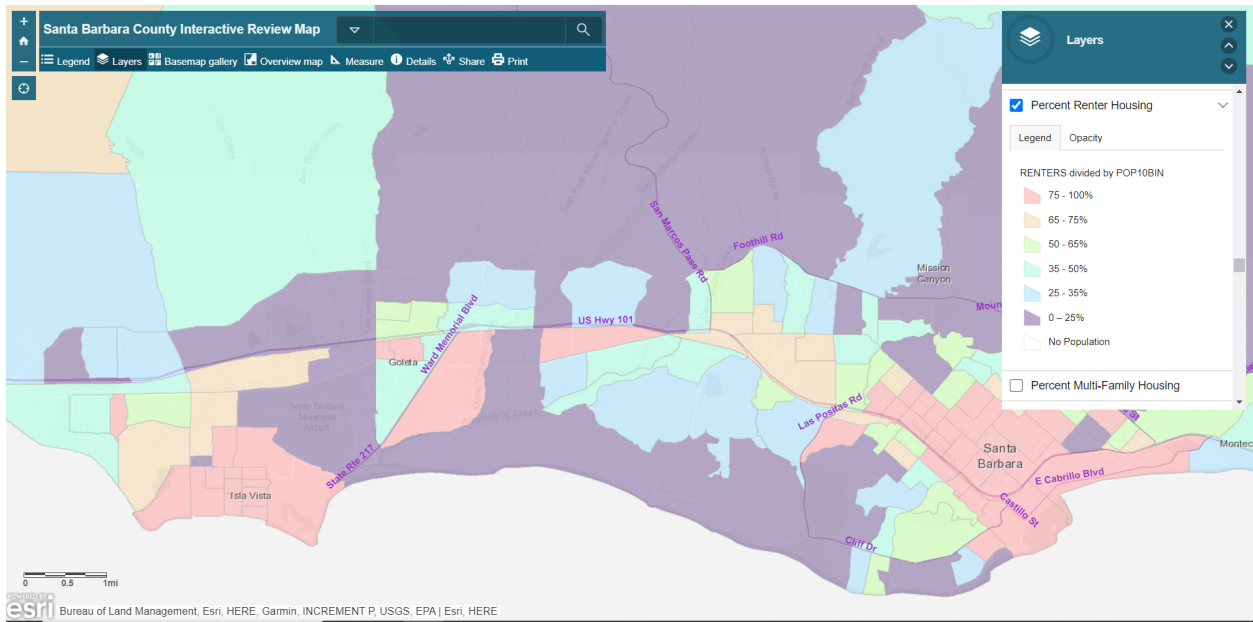
Please review the following data-overlaid maps that clearly demonstrate the shared needs of Lompoc and Isla Vista, and that Isla Vista is not a Community of Interest with Hope Ranch, The Mesa and other areas of District 2.

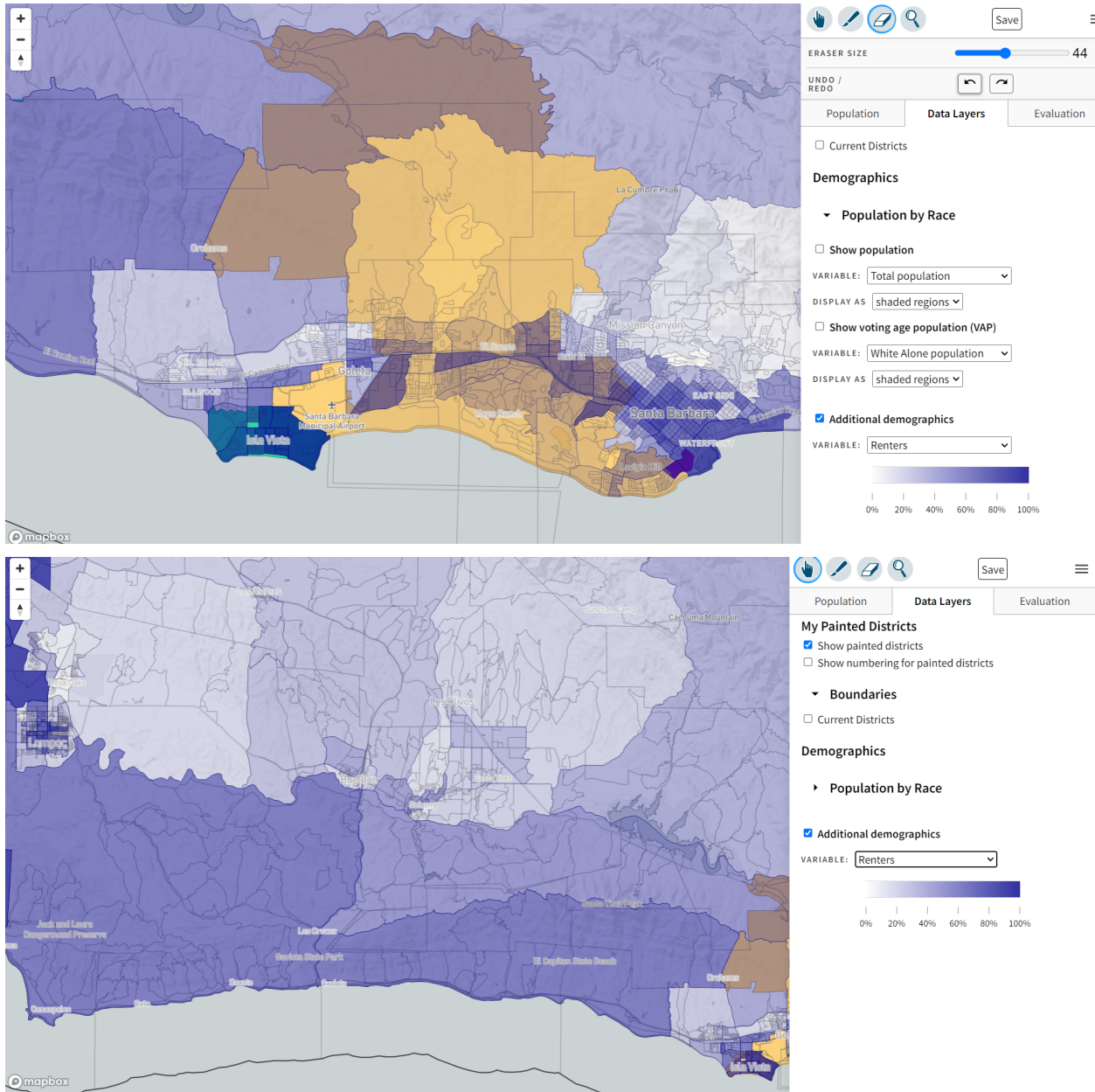
Income Demographics:



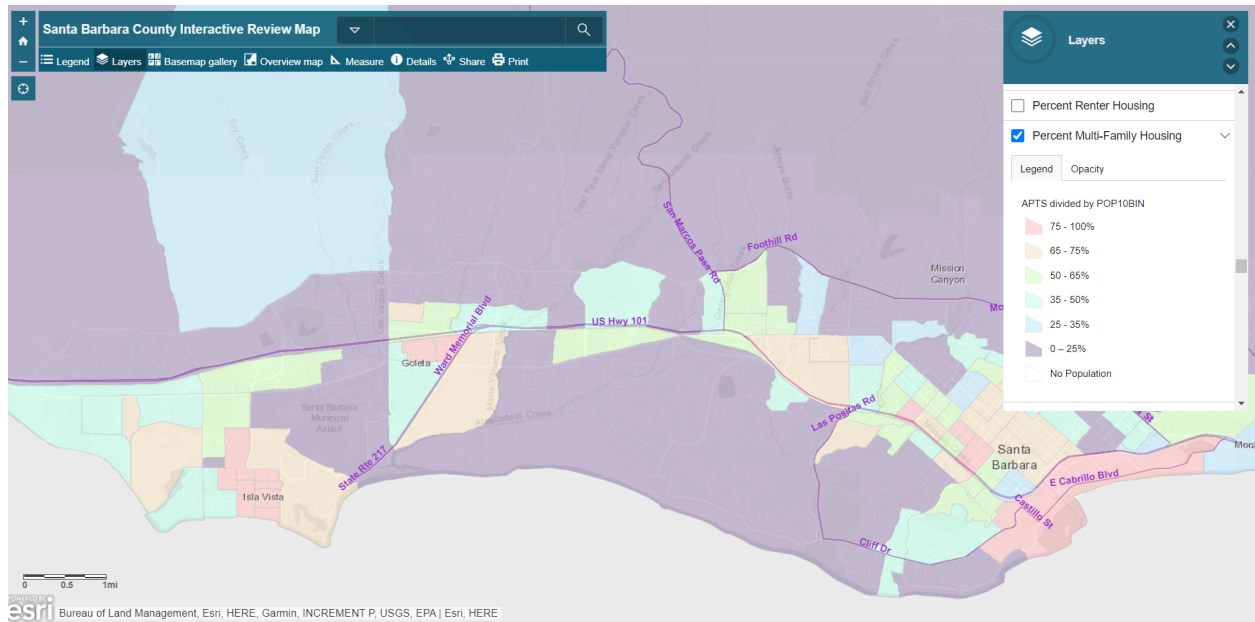


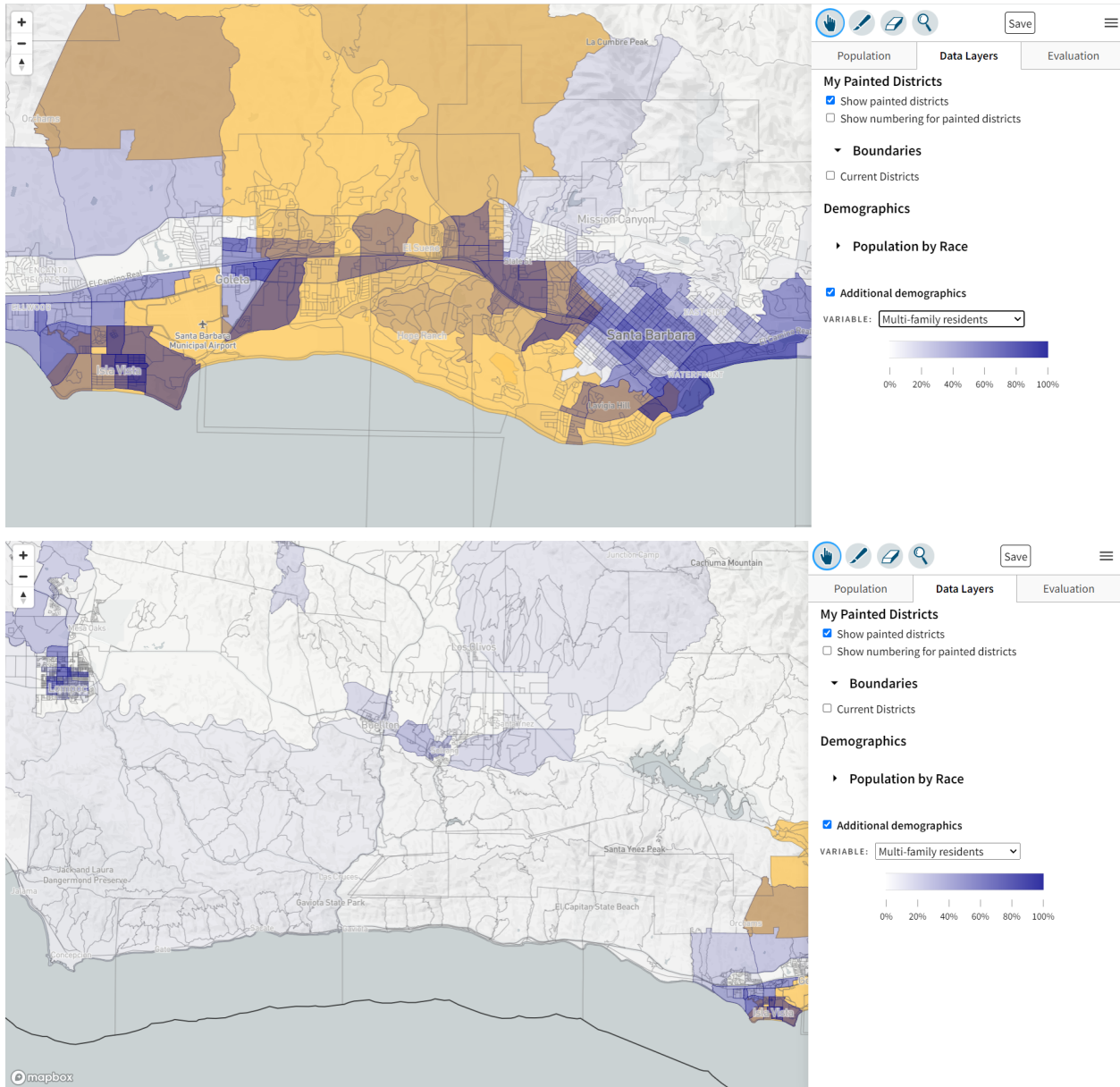
Renting Demographics:





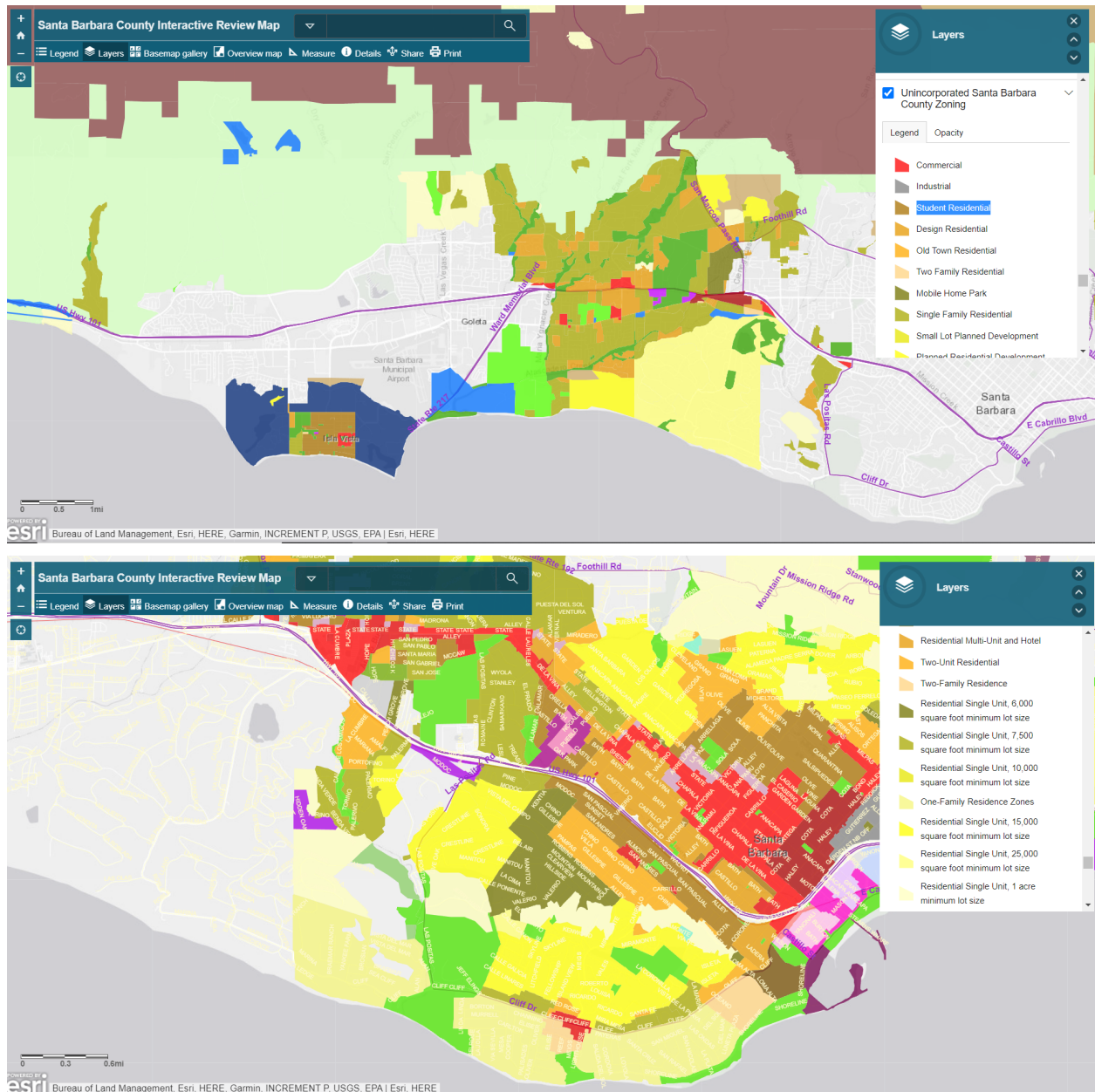
Multi-Family Housing Demographics:

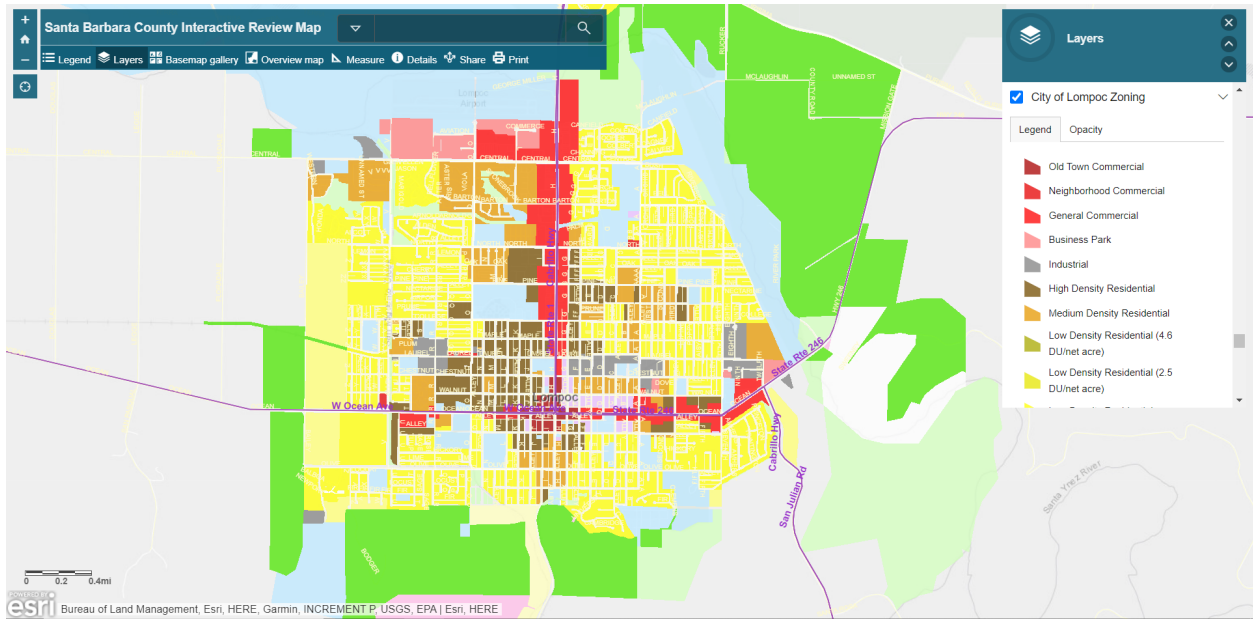




Zoning Breakdown:

Additionally, a comparison of the zoning maps for the City of Santa Barbara, unincorporated Santa Barbara County, and the City of Lompoc clearly shows that Isla Vista has a much more similar pattern of density and land use with Lompoc than the Santa Barbara and Goleta Valley neighborhoods in the proposed District 2.





Thank you for considering my input. To reiterate, the map that will best serve the communities of Lompoc, Isla Vista, and the rest of Santa Barbara County is map 821.

Sincerely,

Ian Baucke

District 2
Santa Barbara

From: [DENNIS DURHAM](#)
To: [CEO Redistricting RES](#)
Subject: Redistricting
Date: Friday, December 3, 2021 4:21:38 PM

Caution: This email originated from a source outside of the County of Santa Barbara. Do not click links or open attachments unless you verify the sender and know the content is safe.

Dear Commissioners,

Throughout the course of your many months of service, you have stated time and time again, that commissioners would NOT draw their own maps. Instead, they would “adjust” maps as necessary based on final commission deliberations.

Unfortunately, Map 818 is an aberration of your intentions. No one from the public requested that Orcutt be placed in the same district as Isla Vista and UCSB!

This version of Map 818 came from one commissioner only and not the public.

This late in the process, the community should not have been shocked at the last minute by way of this commissioner drawn and submitted map!

Orcutt, the Santa Ynez Valley and IV/UCSB are disparate communities, not communities of interest.

Orcutt is primarily working class families.

SY Valley is a semi-rural community primarily comprised estates and vineyards with many retirees.

IV and UCSB are single students here on a temporary basis living in a densely populated coastal community.

Please reject map 818 from further consideration accordingly.

Furthermore, please place IV and UCSB in a south county district, where IT IS and where IT BELONGS!

Sincerely,

Dennis C Durham &

Sheila M Durham

From: [Ferial Sadeghian](#)
To: [CEO Redistricting RES](#)
Subject: Redistricting
Date: Saturday, December 4, 2021 8:00:40 AM

Caution: This email originated from a source outside of the County of Santa Barbara. Do not click links or open attachments unless you verify the sender and know the content is safe.

Dear commissioners, I am a resident and business owner in cuyama valley, and been following the redistricting maps in last few weeks. We have held few meetings in the valley, and few items have became very important,

1. For cuyama valley to be a whole, we have a population of 1100, and it's very important not to divide the small valley we have
2. There are a lot of projects underway , that has been under district one, and we would like to keep the continuity.
3. District one has been very involved and very reachable, and personable.
4. A big portion of the valley is on highway 33 and very connected to Ventura, and carpenteria, we feel it's very important to keep that connection
5. District 5 is big ag and doesn't support small ags in cuyama

We vote for map 818.

Thankyou,
Ferial sadeghian

Sent from my iPhone

From: [Brian Campbell](#)
To: [CEO Redistricting RES](#)
Subject: Map 802 is my vote
Date: Saturday, December 4, 2021 8:13:06 AM

Caution: This email originated from a source outside of the County of Santa Barbara. Do not click links or open attachments unless you verify the sender and know the content is safe.

The other mods do not make sense as they combine completely different areas with different needs.

They are not districts of our peers.

Lompoc is in Hancock community college district; not SBCC.

Support MAP 822 that keeps all City of SB governed/taxed properties together: UCSB, airport and sbcc.

--

Take care,

Brian E. Campbell JD, GPA, ABR
Grubb Campbell Real Estate Group
Village Properties
805.294.2890
LIC#01410304
www.GrubbCampbell.com

LOCALLY OWNED, GLOBALLY CONNECTED
LEADING REAL ESTATE COMPANIES OF THE WORLD

From: [Brian Campbell](#)
To: [CEO Redistricting RES](#)
Subject: Map 822 is my vote
Date: Saturday, December 4, 2021 8:15:16 AM

Caution: This email originated from a source outside of the County of Santa Barbara. Do not click links or open attachments unless you verify the sender and know the content is safe.

Map 822 is my vote

The other mods do not make sense as they combine completely different areas with different needs.

They are not districts of our peers.

Lompoc is in Hancock community college district; not SBCC.

Support MAP 822 that keeps all City of SB governed/taxed properties together: UCSB, airport and sbcc.

--

Take care,

Brian E. Campbell JD, GPA, ABR
Grubb Campbell Real Estate Group
Village Properties
805.294.2890
LIC#01410304
www.GrubbCampbell.com

LOCALLY OWNED, GLOBALLY CONNECTED
LEADING REAL ESTATE COMPANIES OF THE WORLD

--

Take care,

Brian E. Campbell JD, GPA, ABR
Grubb Campbell Real Estate Group
Village Properties
805.294.2890
LIC#01410304
www.GrubbCampbell.com

LOCALLY OWNED, GLOBALLY CONNECTED
LEADING REAL ESTATE COMPANIES OF THE WORLD

From: [Ron](#)
To: [CEO Redistricting RES](#)
Subject: Supporting map 822C
Date: Saturday, December 4, 2021 8:26:20 AM

Caution: This email originated from a source outside of the County of Santa Barbara. Do not click links or open attachments unless you verify the sender and know the content is safe.

I strongly support map 822C <https://drawsantabarbaracounty.org/wp-content/uploads/2021/12/Plan-822-Bray-Trosky-Turley-Plan.pdf>

Of the 3 maps under consideration it is the only one that adheres to the principles of geographic continuity and maintains communities of interest.

The other two maps use a contorted plan to include Isla Vista with the north county by way of using the beach to the south of Goleta to connect it to District 3. Both should be rejected because they fail to meet the standards included in the Voting Rights Act.

Ron Fink
Lompoc

From: [Ulrick, Greg](#)
To: [CEO Redistricting RES](#)
Subject: Redistricting Draft Map - My Vote
Date: Saturday, December 4, 2021 9:30:48 AM

Caution: This email originated from a source outside of the County of Santa Barbara. Do not click links or open attachments unless you verify the sender and know the content is safe.

Greetings,

Over the years I note that north county voters do not like being districted in with Isla Vista. Voters may have even passed a redistrict vote in 2018 to drop Isla Vista. (I could be wrong)

Regardless, I believe the overwhelming popular belief in Lompoc, Santa Ynez Valley, and Santa Maria Valley is that Isla Vista does not belong in the northern voting district. I say this based on county government hearings and public comment posts that I am exposed to.

Please note I support Map 822c.

Thank you,

Greg Ulrick
Regional Technical Manager
Pacific & STX Regions

ChampionX
9201 Camino Media, Suite 130, Bakersfield, CA 93311
M 805-895-3497
E greg.ulrick@championx.com

CONFIDENTIALITY NOTICE: This e-mail communication and any attachments may contain proprietary and privileged information for the use of the designated recipients named above. Any unauthorized review, use, disclosure or distribution is prohibited. If you are not the intended recipient, please contact the sender by reply e-mail and destroy all copies of the original message.

From: [John Duncan](#)
To: [CEO Redistricting RES](#)
Subject: Fwd: Maps 818, 818 B, Commissioner Turley 818, 818C, 821 B/C
Date: Saturday, December 4, 2021 9:52:32 AM

Caution: This email originated from a source outside of the County of Santa Barbara. Do not click links or open attachments unless you verify the sender and know the content is safe.

This letter was sent to your commission 12 hours before the deadline on Friday but was not included in the Public Comment package. I called this to the attention of Dr. Phillips late Friday evening when I discovered the omission. He asked the County website person to add it to the packet and forwarded it to commissioners directly. It is unclear whether they had the chance to read it before Saturday's hearing. Here it is for the record. Please include it in your next Public Comment packet.
Thank You

Begin forwarded message:

From: John Duncan <jldsylv@icloud.com>
Subject: Maps 818, 818 B, Commissioner Turley 818, 818C, 821 B/C
Date: December 3, 2021 at 5:09:09 AM PST
To: redistricting@countyofsb.org

Dear Commissioners,

Once again you were up late (until 11pm) Wednesday night and I don't believe the late hour served you well. In your hurry to get to the finish line your process to evaluate the maps and their various revisions and modifications was slipshod and inconsistent.

A map like Map 818 that had been selected as one of your top five out of a hundred maps, and had received immense written and oral public support over a number of weeks, was casually tossed aside in favor of a commissioner-inspired revision that had little or no resemblance to Map 818. And it was done in a twinkling, even though no member of the public and almost no members of the commission had seen it before the meeting. There was hardly any discussion of how the map was consistent with the original Map 818, or the map posted on the website as "Commissioner Turley 818."

The map submitted by the public was gone and it was replaced by a map drawn by the commission. The public has repeatedly been told that the commission would not be drawing their own maps and that the commission would only be requesting minor modifications. This was not a minor modification. I would suggest that a minor modification might involve moving a population of a few thousand from one district to another, no more. Since every move of a line is in effect a doubling of the population involved, even a few thousand quickly becomes twice a few thousand. 818 C Turley moves at least 80,000 residents, virtually an entire district. It moves them twice, in that they are moved out of one district and into another district. Why didn't any member of your commission question a map change of that

magnitude?

Many members of the public supported Map 818 because it created a supermajority Latino CVAP district, and it did so without turning the entire county upside down. Map 818 C Turley no longer creates a supermajority Latino district CVAP, but does turn the county upside down.

I request that your commission return to Map 818 or “Commissioner Turley 818”. Both of those maps were posted on the website prior to the meeting with their statistics and the public has endorsed them.

I would refer to “Commissioner Turley 818” as 818 B, I thought it was 818 B and it was being referred to as 818 B, but then I found a quite different map that divides the Santa Ynez Valley labeled Map 818 B. I asked Dr. Phillips about the map and he told me it was “a commissioner-revised version of publicly-submitted 818.” But on your website under View Draft Maps it is listed as “Public 818 B.” Your numbering system is a mess. I was given three different numbers when I asked to know what number my District R map would be given, as a result my public comment referred to an erroneous number.

The commission’s review and acceptance of the modification to Map 821B/C that places both the Fourth and the Third District in the heart of the Santa Ynez Valley was also woefully inadequate. I have pointed out in my previous letter how ill-conceived this modification is. It further complicates regional planning in an area that is already immensely complex, with 2 cities, 3 unincorporated townships, the Chumash Reservation, multiple special districts, and the surrounding unincorporated rural area. The Valley is crossed by busy federal, state and local highways and contains the Santa Ynez River, a primary water source for much of Santa Barbara County and a priceless environmental resource. This is not a situation where having two districts involved will be helpful.

Considering that the “solution” was a “fix” to a problem that the map itself created (separating the reservation and Chumash lands in the Valley from their historic sites on the Gaviota Coast,) the commission should have viewed the rough patchwork “fix” skeptically. But only one commissioner questioned whether the “fix” was actually appropriate. No commissioner pointed out that the Chumash had supported the “Least Disruptive” Map 816B and the less disruptive Map 818 as the appropriate means to ensure their request was honored. No commissioner pointed out that the Santa Ynez Valley was clearly a “community of interest” that should not be divided.

Therefore, I also request that your commission reconsider and reverse the map modification of Map 821B contained within 818C Rios that divides the heart of the Santa Ynez Valley with two different districts. If you can modify it, you can also reverse that modification.

It is clear that the commission’s process to reach this point has been deeply flawed. Early in the process the commission and staff were slow to provide needed information for the public to fulfill the task assigned to it. There was no preliminary analysis and feedback for the many public maps submitted before your deadline, until you necessarily moved the deadline briefly. The many members of the public working in DistrictR did not have ready access to important data (such as city /district lines and CVAP) and needed that analysis

to perfect their maps. The updated census data was incorporated in the map-drawing software too late and DistrictR never incorporated CVAP for Santa Barbara County despite its availability in other counties.

Now that you are near the end of your process you are going too fast to provide the thorough review and discussion your complicated task requires. Public comment time has been shortened repeatedly so that it is impossible for any member of the public to actually comment on the various maps and your process. Reducing comment time to a minute only encourages superficial public interaction.

Early in the process there was lots of time between your meetings for the public to absorb and understand the process and the maps. Now, at the most critical part of your process, your meetings are occurring in such rapid succession (apart from a Thanksgiving break) that the public has very little time to understand what happened at the last meeting, let alone prepare for the next meeting. And the length and time of your evening meetings, with your deliberations occurring at the very last minute, is problematic for many members of the public. Yes, recent meetings have involved many speakers, but that could have been foreseen at the tail end of the process and planned for.

Looking at the three “finalist” maps that are before you in their current form, I cannot encourage you to adopt any of them. All three are needlessly disruptive to the lives of Santa Barbara County residents.

I encourage you to unmodify Map 818 C and adopt Map 818 or the slightly improved “Commissioner Turley 818”. If you can modify it, then you can also reverse that modification.

Thank you for your consideration,

J. Lansing Duncan

Solvang

From: [Pat Roberts](#)
To: [CEO Redistricting RES](#)
Subject: Redistricting SB County
Date: Friday, December 3, 2021 4:42:32 PM

Caution: This email originated from a source outside of the County of Santa Barbara. Do not click links or open attachments unless you verify the sender and know the content is safe.

Dear Commissioners,

Throughout the course of your many months of service, you have stated time and time again, that commissioners would NOT draw their own maps. Instead, they would “adjust” maps as necessary based on final commission deliberations.

Unfortunately, Map 818 is an aberration of your intentions. No one from the public requested that Orcutt be placed in the same district as Isla Vista and UCSB!

This version of Map 818 came from one commissioner only and not the public.

This late in the process, the community should not have been shocked at the last minute by way of this commissioner drawn and submitted map!

Orcutt, the Santa Ynez Valley and IV/UCSB are disparate communities, not communities of interest.

Orcutt is primarily working class families.

SY Valley is a semi-rural community primarily comprised estates and vineyards with many retirees.

IV and UCSB are single students here on a temporary basis living in a densely populated coastal community.

Please reject map 818 from further consideration accordingly.

Furthermore, please place IV and UCSB in a south county district, where IT IS and where IT BELONGS!

Sincerely,

Pat Roberts
Monty Roberts
Laurel Lee Roberts

December 4, 2021

Dear Commissioners,

We support Map 822. Obviously, Isla Vista and UCSB share a common interest in Goleta and Santa Barbara. Their children attend schools in Goleta. They vote for Goleta School Boards, Goleta Water District, Goleta Sanitation District, and not for Santa Ynez or Lompoc.

We do NOT support map 818.

Please support Map 822.

Thank you,

Mike Solodon
Mary Ann Solodon

363 Cannon Green Drive
Unit E
Goleta, CA. 93117

From: [Graham Farrar](#)
To: [CEO Redistricting RES](#)
Subject: Public Comment Support Map Plan 821
Date: Friday, December 3, 2021 5:48:52 PM

Caution: This email originated from a source outside of the County of Santa Barbara. Do not click links or open attachments unless you verify the sender and know the content is safe.

Public Comment Support Map Plan 821

Honorable Redistricting Commissioners

I'm a resident in Santa Barbara County, specifically on the Mesa. I've lived here for 30+ years.

I encourage your Commission to support **map 821**. This map (compared to the others) represents logical proposed county district boundaries.

It also keeps similar neighborhoods and constituencies in the same district. **I support the district boundary between District 1 and 2 which is currently Mission and State.** Mission and State is a natural and clear dividing line between these cities and neighborhoods.

Thank you,

Graham

From: [Winfred Vanwingerden](#)
To: [CEO Redistricting RES](#)
Subject: Public Comment Support Map Plan 821
Date: Saturday, December 4, 2021 10:15:07 AM

Caution: This email originated from a source outside of the County of Santa Barbara. Do not click links or open attachments unless you verify the sender and know the content is safe.

Good afternoon Honorable Commissioners,

Thank you for your service. You are doing very important work, helping guide our community through this process. I know this has been a lengthy commitment.

My name is Winfred Van Wingerden and I am a 54 year resident of Carpinteria. I've been a part of this community, and love how our Carpinteria's agricultural community has been preserved. I've been a farmer for over 40 years and feel strong support for our industry. I **encourage you to vote in support of map 821.**

I like that 821 keeps District 1 including Carpinteria and the Cuyama Valley, because these are both agricultural communities. They also both have been introduced to cannabis cultivation recently.

Map 821 also makes sense because the dividing line between D1-2 includes Mission/State.

We support minor adjustments to D3 to include the unincorporated area of Buellton, which has a lot in common with the Santa Rita Hills AVA.

Finally, I encourage a minor adjustment to the D5 district to include all communities west of Hwy 101, which is a logical dividing line.

Thank you again for considering my comments.

Winfred Van Wingerden
Maximum Nursery Inc.
President
Foothill Rd Carpinteria, CA 93013

From: [Julee Shea](#)
To: [CEO Redistricting RES](#)
Subject: Rejecting Map 818
Date: Saturday, December 4, 2021 10:15:32 AM

Caution: This email originated from a source outside of the County of Santa Barbara. Do not click links or open attachments unless you verify the sender and know the content is safe.

Dear Commissioners,

Throughout the course of your many months of service, you have stated time and time again, that commissioners would NOT draw their own maps. Instead, they would “adjust” maps as necessary based on final commission deliberations.

Unfortunately, Map 818 is an aberration of your intentions. No one from the public requested that Orcutt be placed in the same district as Isla Vista and UCSB!

This version of Map 818 came from one commissioner only and not the public.

This late in the process, the community should not have been shocked at the last minute by way of this commissioner drawn and submitted map!

Orcutt, the Santa Ynez Valley and IV/UCSB are disparate communities, not communities of interest.

Orcutt is primarily working class families.

SY Valley is a semi-rural community primarily comprised estates and vineyards with many retirees.

IV and UCSB are single students here on a temporary basis living in a densely populated coastal community.

Please reject map 818 from further consideration accordingly.

Furthermore, please place IV and UCSB in a south county district, where IT IS and where IT BELONGS!

Sincerely,
Julee Shea

Sent from Julee's iPhone

From: [Connie Ford](#)
To: [CEO Redistricting RES](#)
Cc: [Connie Ford](#)
Subject: Dec 4 Public Comments
Date: Saturday, December 4, 2021 11:54:34 AM

Caution: This email originated from a source outside of the County of Santa Barbara. Do not click links or open attachments unless you verify the sender and know the content is safe.

Dec 4, 2021

Hello Commissioners.

I live in Orcutt. I have noticed over the last 40 years that home ownership has increased dramatically in the areas where there are residents earning higher incomes, like the eastern and southern portion of Santa Maria and Orcutt where newer homes have been built, while the lower income areas, where there are also new homes, have more rentals, multiple families sharing housing costs, and there are more high density, congested neighborhoods. Specifically, west of Broadway and north of Betteravia in Santa Maria.

In an expensive area like the Central Coast, lower income residents are at a big disadvantage. Home ownership is one of the most community stabilizing and wealth building things we have in this country. Entry level retail and farmwork, necessary to the local economy, is unlikely to ever be on the higher income scale, so in this equation, it has to be affordable housing, and preferably home ownership, but also rents, that will have to be modified to meet this challenge.

Your discussions are already focused on this, so I concur with your assessment that these areas should be grouped together with a representative as much as possible. Guadalupe and Tanglewood also share many of the lower income similarities.

So far, Map 821C connects these areas for this particular criteria the best.

Thank you for how thorough and thoughtful you have all been to this important process. I feel confident your final choices will have received the attention necessary for the best outcome.

Connie Ford
Orcutt

From: [Justin Ruhge](#)
To: [CEO Redistricting RES](#)
Subject: Lompoc in 4th
Date: Saturday, December 4, 2021 12:22:51 PM

Caution: This email originated from a source outside of the County of Santa Barbara. Do not click links or open attachments unless you verify the sender and know the content is safe.

As a resident of Lompoc for 27 years and activist and members of the city council I urge you at the Redistricting Commission to place Lompoc in the 4th district where it is today, and please do not divide it with Goleta or IV. IV and UCSB must be placed in district 2 where it fits with that agenda. Please include Vandenberg Village and Mission Hills with Lompoc, because they act as one today. Lompoc is 45 miles from IV and is an agricultural , aerospace, mining and commuter town and as a whole provides our sense of identity. We have our own green energy and will be the home of one of the largest wind energy farms in the State of California. We have nothing in common with IV or UCSB and should not be incorporated in their areas. Lompoc was founded in 1787 as one of the ancient towns in California and was the second city formed in Santa Barbara County in 1888 so we have a long and rich tradition which we do not want diluted by redistricting plans. We support the proposed map 822C as the best compromise.. We wish to keep Lompoc Valley undivided, and in the north County district 4, and move IV and UCSB to District 2 where they fit.

Thank you for your consideration.

Justin M. Ruhge, Lompoc, CA 805-7379536, County resident for 40 years.

From: [Mario Alberto Espinoza](#)
To: [CEO Redistricting RES](#)
Subject: Public Comment 12/4
Date: Saturday, December 4, 2021 1:03:01 PM

Caution: This email originated from a source outside of the County of Santa Barbara. Do not click links or open attachments unless you verify the sender and know the content is safe.

Good afternoon commissioners,

My name is Dr. Mario Espinoza-Kulick. I am a resident of Santa Barbara County, educator, and a concerned community member and voter. These are my own views.

Map 822 is an insult to Latinx voters in Guadalupe and Santa Maria, as well as the many renters, including students, that are struggling against a housing crisis that many of the wealthy homeowners in Santa Barbara and Montecito benefit from. How are we at a place where we are deliberately dividing protected groups and neighborhoods? Is that not Gerrymandering? I am strongly opposed to Map 822 because of the seemingly unintended consequences it will have on Isla Vista, Goleta, and the Santa Maria Valley.

For that reason, I am expressing my full support for maps 821 and 818. Not only does this provide an opportunity for politically diverse Latinx voices to be heard, it also preserves the geographical integrity of each district and is more close in respecting the interests of our Native Chumash Community. This is my public comment, thank you.

Sincerely,

Dr. Mario Espinoza-Kulick, MA, PhD
Department of Sociology | College of Letters & Science | University of California, Santa Barbara

Health Policy Research Scholar | Robert Wood Johnson Foundation

Health Policy Research Scholars is a national leadership program supported by the Robert Wood Johnson Foundation to build equity by investing in scholars from populations traditionally underrepresented in graduate programs whose research, connections, and leadership will inform and influence policy toward a Culture of Health.

www.healthpolicyresearch-scholars.org

www.mespinozakulick.com

From: [Simone Temkin](#)
To: [CEO Redistricting RES](#)
Subject: Fwd: Urgent! Redistricting....LAST CALL! Please Send An Email As Follows today!
Date: Saturday, December 4, 2021 1:11:46 PM

Caution: This email originated from a source outside of the County of Santa Barbara. Do not click links or open attachments unless you verify the sender and know the content is safe.

Dear Commissioners,

Throughout the course of your many months of service, you have stated time and time again, that commissioners would NOT draw their own maps. Instead, they would “adjust” maps as necessary based on final commission deliberations.

Unfortunately, Map 818 is an aberration of your intentions. No one from the public requested that Orcutt be placed in the same district as Isla Vista and UCSB!

This version of Map 818 came from one commissioner only and not the public.

This late in the process, the community should not have been shocked at the last minute by way of this commissioner's drawn and submitted map!

Orcutt, the Santa Ynez Valley and IV/UCSB are disparate communities, not communities of interest.

Orcutt is primarily working class families.

SY Valley is a semi-rural community primarily comprising estates and vineyards with many retirees.

IV and UCSB are single students here on a temporary basis living in a densely populated coastal community.

Please reject map 818 from further consideration accordingly.

Furthermore, please place IV and UCSB in a south county district,

where IT IS and where IT BELONGS!

Sincerely,

--

Simone Temkin
Simonetemkin@gmail.com
805.252.3179 cell

From: [Dennis Kittle](#)
To: [CEO Redistricting RES](#)
Subject: Redistricting Orcutt, Santa Ynez, and Isla Vista
Date: Saturday, December 4, 2021 2:33:44 PM

Caution: This email originated from a source outside of the County of Santa Barbara. Do not click links or open attachments unless you verify the sender and know the content is safe.

The joining of Isla Vista/UCSB with Santa Ynez, and Orcutt as a voting district shows a lack of understanding of the three communities.

This seems to be a blatant case of gerrymandering for the purpose of negating the vote of both Santa Ynez and Orcutt with the lockstep voting of Isla Vista and UCSB.

The populations of the three communities are separated by age, employment, housing, and geography to name just a few.

I would strongly urge the commission to remap the three communities by moving Isla Vista and UCSB into south coast districts where they share geography, or perhaps make Isla Vista and UCSB a district unto itself. I do understand that finding a community with similar characteristics and goals to Isla Vista and UCSB is a thankless and possibly unachievable job, but that is your charge.

Sincerely,
Dennis Kittle,
Santa Barbara

From: [Catherine Harper](#)
To: [CEO Redistricting RES](#)
Subject: .
Date: Saturday, December 4, 2021 4:06:54 PM

Caution: This email originated from a source outside of the County of Santa Barbara. Do not click links or open attachments unless you verify the sender and know the content is safe.

Do not lump Orcutt into district 3. We are a working class community. Isla Vista is primarily students and transient singles. Santa Ynez is higher socioeconomic class of ranchers and vineyard owners. Map 818 was submitted by a commissioner without Orcutt community input. Please reject putting Orcutt in with these NON-SIMILAR communities!

Sent from my T-Mobile 4G LTE Device

From: [Carly Jones](#)
To: [CEO Redistricting RES](#)
Subject: 818 and 821
Date: Saturday, December 4, 2021 4:22:51 PM

Caution: This email originated from a source outside of the County of Santa Barbara. Do not click links or open attachments unless you verify the sender and know the content is safe.

As a member of the Los Alamos community I would like to submit a vote for the final maps 818 and 821.

Thanks!

Carlin Jones
Sent from my iPhone

From: [Thumb](#)
To: [CEO Redistricting RES](#)
Subject: Re: Redistricting of District 3
Date: Saturday, December 4, 2021 7:41:47 PM

Caution: This email originated from a source outside of the County of Santa Barbara. Do not click links or open attachments unless you verify the sender and know the content is safe.

Sent from my iPhone

On Dec 3, 2021, at 15:59, Neal Abello <nealabello@comcast.net> wrote:

Subject: Redistricting of District 3

I support map 822. As a long-time resident (38 years) of (Santa Ynez), I can attest to the fact that District 3 currently includes dissimilar communities with little in common. Many of the residents of the Lompoc and Santa Ynez Valley include older residents, retirees, farmers, and ranchers, and those seeking a quiet place to live, while Isla Vista is a fast-paced urban environment with a young population. These communities, given their inherent and obvious differences, often have diverging interests, creating a divided district. In all of the time that I have lived in the Valley, I have seen an overwhelming takeover of the wishes and desires of voters in the Valley by part-time residents (mainly UCSB students) whose votes go against what we, the full-time residents want. It would be much more democratic for the students to vote in their home districts where they can be fairly represented.

The residents of the rural communities in the Lompoc and Santa Ynez Valley do not want to be subject to the desires and interests of urban areas. Yet, the political representation of those of us in the Santa Ynez Valley and Lompoc Valley have often been overshadowed by the voice of Isla Vista. (This NEW Map 818c violates CA Elections Code 21500.)

Please remove Isla Vista/UCSB from District 3 and placing it with South County where they have numerous common interests. Support map 822.

<Map_822.pdf>

From: [griffenboy41](#)
To: [CEO Redistricting RES](#)
Subject: Fwd: Redistricting of District 3
Date: Saturday, December 4, 2021 7:49:14 PM

Caution: This email originated from a source outside of the County of Santa Barbara. Do not click links or open attachments unless you verify the sender and know the content is safe.

Subject: Redistricting of District 3

I support map 822. As a long-time resident (38 years) of (Santa Ynez), I can attest to the fact that District 3 currently includes dissimilar communities with little in common. Many of the residents of the Lompoc and Santa Ynez Valley include older residents, retirees, farmers, and ranchers, and those seeking a quiet place to live, while Isla Vista is a fast-paced urban environment with a young population. These communities, given their inherent and obvious differences, often have diverging interests, creating a divided district. In all of the time that I have lived in the Valley, I have seen an overwhelming takeover of the wishes and desires of voters in the Valley by part-time residents (mainly USCB students) whose votes go against what we, the full-time residents want. It would be much more democratic for the students to vote in their home districts where they can be fairly represented.

The residents of the rural communities in the Lompoc and Santa Ynez Valley do not want to be subject to the desires and interests of urban areas. Yet, the political representation of those of us in the Santa Ynez Valley and Lompoc Valley have often been overshadowed by the voice of Isla Vista. (This NEW Map 818c violates CA Elections Code 21500.)

Please remove Isla Vista/UCSB from District 3 and placing it with South County where they have numerous common interests. Support map 822.

<Map_822.pdf>

From: [Elyse](#)
To: [CEO Redistricting RES](#)
Subject: Re: Great decision
Date: Sunday, December 5, 2021 6:23:58 AM

Caution: This email originated from a source outside of the County of Santa Barbara. Do not click links or open attachments unless you verify the sender and know the content is safe.

Dear Commissioners,

I fulling support your redistricting map as you outlined this past week. It was always crazy to have IV included with Solvang! I live in District 2 but always thought that was odd all these years!

Merry Christmas, Happy Hanukkah to you all

Cheers,
Elyse Reitzin.

From: [Justin Shores](#)
To: [CEO Redistricting RES](#)
Subject: Final Map
Date: Sunday, December 5, 2021 7:34:06 AM

Caution: This email originated from a source outside of the County of Santa Barbara. Do not click links or open attachments unless you verify the sender and know the content is safe.

Dear Commissioners,

I live and work in Goleta. Thank you for your decision to use map 822, it was the most balanced and fair map to work off of.

I have no political party that I align with and your decision will help give voice to our individual communities, not a political party. I believe local government is the best way to insure people have representation outside of the 2 party system.

I pulled up one of the most recent Dem candidates endorsement lists and recognized many familiar names. I noticed they were the ones pushing maps 818 and 821. A lot of the voices that spoke yesterday were either on staff or endorsed candidates. CAUSE has endorsed many of the candidates who spoke in favor of the map.

<https://cathymurillo.com/endorsements/>

Your lawyers were approved with a vote of 3 to 2 by the 3 supervisors who are endorsed by the party as well. These 3 supervisors have also endorsed party candidates and have “skin in the game”. As an observer from the outside this looks very suspect.

Another major concern is the amount of time given to Commissioner Rios who continually went off camera during the day. Her exparte communication list is short but includes CAUSE and other party loyalists. She was also the one to introduce the map that was illegally submitted. Is there any accountability for this behavior?

Best Regards,
Justin Shores

From: [Janet Price](#)
To: [CEO Redistricting RES](#)
Subject: Thank you!!
Date: Sunday, December 5, 2021 11:31:14 AM

Caution: This email originated from a source outside of the County of Santa Barbara. Do not click links or open attachments unless you verify the sender and know the content is safe.

Dear Commissioners,

I live in the city and county of Santa Barbara. I want to thank you so much for your time and hard work to determine a fair map for our county. I support map 822 with IV no longer in district 3 as drawn. I am so pleased that this map was chosen. It will ensure fair representation for all districts.

Thank you again for your hard work and dedication during this process.

Janet Price

From: [Gianna Colombo](#)
To: [CEO Redistricting RES](#)
Subject: Good for You - Choosing Map 822
Date: Sunday, December 5, 2021 12:51:56 PM

Caution: This email originated from a source outside of the County of Santa Barbara. Do not click links or open attachments unless you verify the sender and know the content is safe.

Dear Commissioners,

I am a native Californian and I live in both Los Olivos and Montecito. Santa Barbara County is arguably the most beautiful land in the entire state and deserves the best leadership to keep it a wonderful place to live.

Thank you very much for choosing Map 822. It is the best option for me and my neighbors in Los Olivos. Our lifestyle is 180 degrees opposite than anyone living in Isla Vista. I still do not understand why the two areas were ever in the same district as they are drastically different in geography and demographics.

Congratulations on your selection. All of you made the right decision in choosing Map 822.

Sincerely,

Gianna Colombo

From: [Michelle Kristoffersen](#)
To: [CEO Redistricting RES](#)
Subject: 822
Date: Sunday, December 5, 2021 1:33:51 PM

Caution: This email originated from a source outside of the County of Santa Barbara. Do not click links or open attachments unless you verify the sender and know the content is safe.

I just wanted to send a quick note in support of the map you chose, 822.
I live in the Santa Ynez Valley and I'm very pleased we are not with Isla Vista anymore!
Thank You,
Michelle Kristoffersen

Sent from my iPhone

From: [Tammy Hughes](#)
To: [CEO Redistricting RES](#)
Subject: Redistricting
Date: Saturday, December 4, 2021 5:24:38 AM

Caution: This email originated from a source outside of the County of Santa Barbara. Do not click links or open attachments unless you verify the sender and know the content is safe.

Dear Commissioners,

Throughout the course of your many months of service, you have stated time and time again, that commissioners would NOT draw their own maps. Instead, they would “adjust” maps as necessary based on final commission deliberations.

Unfortunately, Map 818 is an aberration of your intentions. No one from the public requested that Orcutt be placed in the same district as Isla Vista and UCSB!

This version of Map 818 came from one commissioner only and not the public.

This late in the process, the community should not have been shocked at the last minute by way of this commissioner drawn and submitted map!

Orcutt, the Santa Ynez Valley and IV/UCSB are disparate communities, not communities of interest.

Orcutt is primarily working class families.

SY Valley is a semi-rural community primarily comprised estates and vineyards with many retirees.

IV and UCSB are single students here on a temporary basis living in a densely populated coastal community.

Please reject map 818 from further consideration accordingly.

Furthermore, please place IV and UCSB in a south county district, where IT IS and where IT BELONGS!

Sincerely,
Tammy Hughes

Tammy Hughes Design
C. 805 331 8284

From: [gretchen.smith](#)
To: [CEO Redistricting RES](#)
Cc: c21bobbie@gmail.org
Subject: Redistricting
Date: Saturday, December 4, 2021 7:29:54 AM

Caution: This email originated from a source outside of the County of Santa Barbara. Do not click links or open attachments unless you verify the sender and know the content is safe.

As a long-time resident of Solvang, I can attest to the fact that District 3 currently includes dissimilar communities with little in common. Many of the residents of the Lompoc and Santa Ynez Valley include older residents, retirees, farmers, and ranchers, and those seeking a quiet place to live, while Isla Vista is a fast-paced urban environment with a young population.

These communities, given their inherent and obvious differences, often have diverging interests, creating a divided district. The residents of the rural communities in the Lompoc and Santa Ynez Valley do not want to be subject to the desires and interests of urban areas. Yet, the political representation of those of us in the Santa Ynez Valley and Lompoc Valley have often been overshadowed by the voice of Isla Vista. (This NEW Map 818c violates CA Elections Code 21500.)

Please remove Isla Vista/UCSB from District 3 and placing it with South County where they have numerous common interests.

Gretchen Smith
342 Bakke Way, Solvang, CA 93463

From: [Alec Lilburn](#)
To: [CEO Redistricting RES](#)
Subject: Redistricting
Date: Saturday, December 4, 2021 10:03:50 AM
Attachments: [Redistricting.msg](#)

Caution: This email originated from a source outside of the County of Santa Barbara. Do not click links or open attachments unless you verify the sender and know the content is safe.

From: [Susie](#)
To: [CEO Redistricting RES](#)
Cc: c21bobbi@gmail.com
Subject: Redistricting
Date: Sunday, December 5, 2021 12:09:59 PM

Caution: This email originated from a source outside of the County of Santa Barbara. Do not click links or open attachments unless you verify the sender and know the content is safe.

I support Map 822. As a lifelong resident of the Santa Ynez Valley, I feel District 3 currently includes communities with little in common. The rural communities of Santa Ynez Valley and Lompoc don't want to be subject to the interests of the urban areas. We have often been overshadowed by the voice of Isla Vista. Please remove Isla Vista/UCSB from District 3 and move to the south county where they have more interests in common. Please support Map 822. Thank you for your consideration, Carolyn Sanchez

[Sent from the all new AOL app for iOS](#)

From: [Tammy Hughes](#)
To: [CEO Redistricting RES](#)
Subject: Redistricting
Date: Sunday, December 5, 2021 2:26:43 PM

Caution: This email originated from a source outside of the County of Santa Barbara. Do not click links or open attachments unless you verify the sender and know the content is safe.

Dear Commissioners,

I live in the County of Santa Barbara. Thank you for your time and hard work to determine a fair map for our county.

I support map 822 with IV no longer in district 3 as drawn.

Thank you all for your hard work and dedication during this process.

Sincerely,
Tammy and Kim Hughes

Tammy Hughes Design
C. 805 331 8284

From: [Michael English](#)
To: [CEO Redistricting RES](#)
Subject: Support map 822
Date: Friday, December 3, 2021 4:45:35 PM

Caution: This email originated from a source outside of the County of Santa Barbara. Do not click links or open attachments unless you verify the sender and know the content is safe.

I have been following the committee's efforts with interest, as redistricting is important to repair the damage the previous gerrymandered district boundaries have done to our communities. I remarked to you in previous writings and commented during the public meetings that I primarily support map 408B, with map 822 as a second choice. It appears that, in spite of the fact that a number of people had expressed their support of map 408B at the December 1 meeting, map 408B was removed from the final list under consideration. At this point, the only map I can see being anywhere close to representative of our populations is map 822, though it has a significant problem in artificially dividing Santa Barbara.

Measure G established this commission so that citizens could create district boundaries that are not gerrymandered, but it is shocking to see the politicalization that is going on. Maps are supposed to be contributed by citizens so why was CAUSE, a special interest group, allowed to submit maps? High school students are not able to vote, so why were high school students making comments at the December 1 meeting? Those high school students were clearly given scripts to speak from. It is also unconscionable for the commission to make last minute modifications to the final list of maps just hours before the meeting. The combination of all this gives the commission an appearance of carefully crafting a predetermined outcome rather than guiding an open and transparent process.

The districts need to be redrawn in a more logical manner that reflects our communities' similar interests and needs, especially with respect to Districts 2 and 3. The characteristics of Isla Vista are much more urban than those of areas north, and as such it does not belong in District 3. Isla Vista better fits in the more urban District 2 since residents of Isla Vista vote for members of the Goleta School Board, the Goleta Sanitation District, and the Goleta Water District and their children attend schools in Goleta. They also vote for a member of the SBCC Trustees and for the Santa Barbara Unified School Board. They don't vote for Santa Ynez or Lompoc local political seats. The residents of Isla Vista live, work, play and shop in Goleta and Santa Barbara. Isla Vista belongs with Goleta and Santa Barbara -- not Santa Ynez, Lompoc or Orcutt.

Of the three final maps you are now considering, map 822 is the only one that comes close to following California Election Code 21500, which requires geographic and demographic cohesion. It provides equitable boundaries throughout the county. The other maps in your final selection are illogical in my view and appear to be gerrymandered just as the current district map is. Please give your support for map 822.

Sincerely,
Michael English
534 Tepic Place, Santa Barbara CA 93111

--

— Michael

From: [Heather Katsev](#)
To: [CEO Redistricting RES](#)
Subject: Support map 822
Date: Sunday, December 5, 2021 2:47:50 PM

Caution: This email originated from a source outside of the County of Santa Barbara. Do not click links or open attachments unless you verify the sender and know the content is safe.

Dear Commissioners,

I live in the city of Santa Barbara. Thank you for your time and hard work to determine a fair map for our county.

I support map 822 with IV no longer in district 3 as drawn.

Thank you all for your hard work and dedication during this process.

Sincerely,
Heather Katsev

From: [Michael English](#)
To: [CEO Redistricting RES](#)
Date: Sunday, December 5, 2021 3:40:09 PM

Caution: This email originated from a source outside of the County of Santa Barbara. Do not click links or open attachments unless you verify the sender and know the content is safe.

Dear Commissioners,

Thank you all for your hard work and dedication during the redistricting process. I live in the unincorporated part of Santa Barbara. It's important to me that our district boundaries are fair, and your decision to use map 822 with Isla Vista as part of District 2 instead of District 3 is one that I support. Thank you again for your time and hard work in getting to this decision.

Sincerely,
Michael English

--

— Michael

From: [diane.mazur](#)
To: [CEO Redistricting RES](#)
Subject: Redistricting Map 822
Date: Sunday, December 5, 2021 4:20:19 PM

Caution: This email originated from a source outside of the County of Santa Barbara. Do not click links or open attachments unless you verify the sender and know the content is safe.

[Sent from Yahoo Mail on Android](#)

Dear Commissioners,

Want to thank you for a decision well thought-out. We live in the Third District and after so many attempts to divorce IV from the 3rd due to so much dissimilarity, we finally have a solution to an overdue problem. We have requested this for so many years, but unfortunately politics played the major role in keeping the status quo. Thank you for not being a part of that scene and doing what the citizens of the 3rd have requested.

We appreciate all the hard work you expended on this project, a rather thankless task.

Sincerely,

Diane and Stefan Mazur
1128 Fredensborg Cyn Rd
Solvang, CA

We want to thank you

From: [stefanmazur](#)
To: [CEO Redistricting RES](#)
Subject: Redistricting Map 822 Third District
Date: Sunday, December 5, 2021 4:44:10 PM

Caution: This email originated from a source outside of the County of Santa Barbara. Do not click links or open attachments unless you verify the sender and know the content is safe.

Sent from [Mail](#) for Windows

Dear Commissioners,

We want to thank you for a decision well thought-out regarding the Third District. We live in the Third District and after so many attempts to divorce IV from the 3rd due to so many dissimilarities, we finally have a solution to an overdue problem which is in the best interest of both parties. We have requested this for so many years, but unfortunately politics played a major role in keeping the status quo. Thank you for not basing your decision on politics but on the requests of the residents of the Third District.

We appreciate all the hard work you expended on this project, a rather thankless task.

Sincerely,

Stefan and Diane Mazur
1128 Fredensborg Cyn. Rd.
Solvang, CA 93463



Virus-free. www.avast.com

From: angelalcerda@gmail.com
To: [CEO Redistricting RES](#)
Subject: Thank you!
Date: Sunday, December 5, 2021 5:17:28 PM

Caution: This email originated from a source outside of the County of Santa Barbara. Do not click links or open attachments unless you verify the sender and know the content is safe.

Dear Commissioners,

I live in the city of Buellton. I wanted to thank each of you for your time and hard work to determine a fair map for our Santa Barbara county.

I support map 822 with IV no longer in district 3 as drawn.

Thank you all for your hard work and dedication during this process.

Sincerely,
Angela L. Cerda

From: [Zoë Guess](#)
To: [CEO Redistricting RES](#)
Subject: Fair map for our county...
Date: Sunday, December 5, 2021 5:17:35 PM

Caution: This email originated from a source outside of the County of Santa Barbara. Do not click links or open attachments unless you verify the sender and know the content is safe.

Dear Commissioners,

I am a Santa Barbara native. Thank you for your time and hard work to determine a fair map for our county.

I support map 822 with IV no longer in district 3 as drawn.

Thank you all for your hard work and dedication during this process.
God bless you.

Warmly,
Zoë Guess

From: [Cara Ferrick](#)
To: [CEO Redistricting RES](#)
Subject: please consider- IV Map
Date: Sunday, December 5, 2021 5:21:36 PM

Caution: This email originated from a source outside of the County of Santa Barbara. Do not click links or open attachments unless you verify the sender and know the content is safe.

Dear Commissioners,

I live in the city/county of Santa Barbara. Thank you for your time and hard work to determine a fair map for our county.

I support map 822 with IV no longer in district 3 as drawn.

Thank you all for your hard work and dedication during this process.

thank you,
Cara F

From: [Fred Lageman](#)
To: [CEO Redistricting RES](#)
Subject: Map 822
Date: Saturday, December 4, 2021 7:23:23 AM

Caution: This email originated from a source outside of the County of Santa Barbara. Do not click links or open attachments unless you verify the sender and know the content is safe.

I support map 822.

Sent from my iPhone

From: [Gina Brooke](#)
To: [CEO Redistricting RES](#)
Subject: Map 822
Date: Sunday, December 5, 2021 2:47:58 PM

Caution: This email originated from a source outside of the County of Santa Barbara. Do not click links or open attachments unless you verify the sender and know the content is safe.

Dear Commissioners,

I live in the county of Santa Barbara, I sincerely Thank you for your time and hard work to determine a fair map for our county.

I support map 822 with IV no longer in district 3 as drawn.

Thank you all for your hard work and dedication during this process.

Sincerely,

Gina Ete

CONFIDENTIALITY NOTE: The information contained in this e-mail message and any attachments is highly confidential information intended only for the use of the individual or entity to whom it is addressed. If the reader of this message is not the intended recipient, you are hereby notified that any dissemination, distribution or copy of this message or its attachments is strictly prohibited. If you have received this e-mail in error, please immediately notify us by telephone or email and delete the message. Thank you.

From: [Lydia](#)
To: [CEO Redistricting RES](#)
Subject: Map 822
Date: Sunday, December 5, 2021 3:47:30 PM

Caution: This email originated from a source outside of the County of Santa Barbara. Do not click links or open attachments unless you verify the sender and know the content is safe.

Dear Commissioners,

I live in the city/county of Goleta. Thank you for your time and hard work to determine a fair map for our county.

I support map 822 with IV no longer in district 3 as drawn.

Thank you all for your hard work and dedication during this process.

Sincerely,
Lydia Kaestner

From: [Robin Serritslev](#)
To: [CEO Redistricting RES](#)
Subject: Map 822
Date: Sunday, December 5, 2021 5:36:02 PM

Caution: This email originated from a source outside of the County of Santa Barbara. Do not click links or open attachments unless you verify the sender and know the content is safe.

Dear Commissioners,

I support map 822 as someone living and working in Solvang. Thank you for listening and for volunteering.

Sincerely,

Robin Serritslev

Sent from my iPhone

From: [Kathy](#)
To: [CEO Redistricting RES](#)
Subject: Redistricting SB
Date: Sunday, December 5, 2021 5:41:08 PM

Caution: This email originated from a source outside of the County of Santa Barbara. Do not click links or open attachments unless you verify the sender and know the content is safe.

Dear Commissioners,

I want to thank you for creating a fair and impartial map, and listening to your fellow constituents. I live in the Santa Ynez Valley, and I truly appreciate your hard work. I support map 822 with IV no longer in district 3 as drawn. This makes so much sense.

Thank you all for your hard work and dedication during this process.

Sincerely,

Kathy Grace-Velazquez

Sent from ProtonMail for iOS

From: [HerbB](#)
To: [CEO Redistricting RES](#)
Subject: We are writing in support of the map 822 which excludes Isla Vista from district 3
Date: Sunday, December 5, 2021 8:05:59 PM

Caution: This email originated from a source outside of the County of Santa Barbara. Do not click links or open attachments unless you verify the sender and know the content is safe.

Dear Commissioners! Thank you for your hard work and dedication and the many hours of volunteer work, away from your families. You have come to a fair conclusion which is fitting the needs of our district. We live over 40 in district 3 outside of the City of Solvang.

We are most grateful for your service. Sincerely, Herbert and Helen Bundgen

From: [Ulrick, Greg](#)
To: [CEO Redistricting RES](#)
Subject: Redistricting Draft Map - Your 12-8 Vote
Date: Sunday, December 5, 2021 8:09:02 PM

Caution: This email originated from a source outside of the County of Santa Barbara. Do not click links or open attachments unless you verify the sender and know the content is safe.

Greetings Commissioners,
I live in Solvang, Santa Barbara County, CA

Thank you for removing Isla Vista from County District 3 when you heard public comment on 12/4.

Please vote on 12/8 to adopt Map 822c and finalize the removal of Isla Vista.

Thank you,
Greg Ulrick
Regional Tech Mngr.
805-895-3497

From: Ulrick, Greg
Sent: Saturday, December 4, 2021 9:31 AM
To: redistricting@countyofsb.org
Subject: Redistricting Draft Map - My Vote

Greetings,
Over the years I note that north county voters do not like being districted in with Isla Vista. Voters may have even passed a redistrict vote in 2018 to drop Isla Vista. (I could be wrong)

Regardless, I believe the overwhelming popular belief in Lompoc, Santa Ynez Valley, and Santa Maria Valley is that Isla Vista does not belong in the northern voting district. I say this based on county government hearings and public comment posts that I am exposed to.

Please note I support Map 822c.

Thank you,

Greg Ulrick
Regional Technical Manager
Pacific & STX Regions

ChampionX
9201 Camino Media, Suite 130, Bakersfield, CA 93311
M 805-895-3497
E greg.ulrick@championx.com

CONFIDENTIALITY NOTICE: This e-mail communication and any attachments may contain proprietary and privileged information for the use of the designated recipients named above. Any unauthorized review, use, disclosure or distribution is prohibited. If you

are not the intended recipient, please contact the sender by reply e-mail and destroy all copies of the original message.

From: [Thomsen](#)
To: [CEO Redistricting RES](#)
Subject: Support for map 822
Date: Sunday, December 5, 2021 8:48:54 PM

Caution: This email originated from a source outside of the County of Santa Barbara. Do not click links or open attachments unless you verify the sender and know the content is safe.

Dear Commissioners,

We live in the unincorporated area of Solvang and want to thank you for your time and hard work to determine a fair map for our county.

As a 43 year valley resident I have often wondered what we as a community have in common with Isla Vista and why transitory college students had an equal voice in decisions that they cared little about but which effected our livelihoods.

My husband and I strongly support map 822 with IV no longer in District 3 as drawn.

Thank you for listening to all the deliberations and for your dedication to making this process as fair as possible.

Sincerely,
Pete & Kristen Thomsen

From: [daniblunk](#)
To: [CEO Redistricting RES](#)
Subject: I support Map 822
Date: Sunday, December 5, 2021 11:22:41 PM

Caution: This email originated from a source outside of the County of Santa Barbara. Do not click links or open attachments unless you verify the sender and know the content is safe.

Dear Comissionares,

I am a resident of Santa Barbara and I believe map 822 with IV being removed from district 3 is the best choice.

Thank you for your hard work!

Dani Blunk

Sent from ProtonMail for iOS

From: [David Billesbach](#)
To: [CEO Redistricting RES](#)
Subject: Vote for Map 821
Date: Monday, December 6, 2021 8:53:09 AM

Caution: This email originated from a source outside of the County of Santa Barbara. Do not click links or open attachments unless you verify the sender and know the content is safe.

Honorable Redistricting Commission - please consider voting in support of 821. I've reviewed the maps that have been selected by your Commission, and 821 is the best for the constituents of the county. The proposed boundaries are logical and natural based on the communities of SBC.

For example, I support including IV with District 3, and honoring the Chumash request to keep their reservation and other traditional lands in the same district. Furthermore, the proposed boundary for District 1 is sensible because Carpinteria and Cuyama are largely agricultural communities. And the constituents of Carp are similar to the constituents of the SB Eastside and Westside, which are largely Latinx.

Thank you for your consideration. I'm a resident of the County and invested in this process.

From: [Phyllis Moore](#)
To: [CEO Redistricting RES](#)
Subject: December 8, 2021 Vote
Date: Monday, December 6, 2021 11:29:30 AM

Caution: This email originated from a source outside of the County of Santa Barbara. Do not click links or open attachments unless you verify the sender and know the content is safe.

December 6, 2021

Dear Commissioners,

I would like to express to you that I support map 822 with IV no longer in district 3 as drawn. I have lived in Santa Ynez for over 20 years and believe Santa Barbara County is the most wonderful place in the world to live.

Thank you for your time, energy and dedication in making a fair map for the county.

Sincerely,
Phyllis Moore

From: [Lucille Boss](#)
To: [CEO Redistricting RES](#)
Subject: Thank you
Date: Saturday, December 4, 2021 6:55:52 PM

Caution: This email originated from a source outside of the County of Santa Barbara. Do not click links or open attachments unless you verify the sender and know the content is safe.

Good evening, Chair Morris and Commissioners,

Just a note to THANK YOU for your service. I've participated in most meetings virtually (live or watching a recording), and I appreciate the grace with which you have moved through a complicated, challenging process. Your commitment came with a sacrifice of time and energy, but as you know, it is a worthy investment considering the impact your service has on our communities.

In deep gratitude,
Lucille T. Boss

Lucille Boss (she, her, hers)
pineapplesandpink@yahoo.com
805.637.5129

From: [Amy Blair](#)
To: [CEO Redistricting RES](#)
Subject: Thank you
Date: Monday, December 6, 2021 1:26:39 PM

Caution: This email originated from a source outside of the County of Santa Barbara. Do not click links or open attachments unless you verify the sender and know the content is safe.

Hello to the members of the redistricting commission,

I would like to take this time to deliver my appreciation of your hard work. Your due diligence honored the people of Santa Barbara county, and I couldn't be happier and more proud. I believe the map that was finalized on Saturday night will be amazing in representing the many beautiful equitable voices of SB county. Especially by placing Isla Vista in district 2, contingent with the like-minds of their southern coastal neighbors!

Thank you greatly!!

Amy Blair
Long time student, employee and resident of SB county

From: [Denice Searcy](#)
To: [CEO Redistricting RES](#)
Subject: District Map for Santa Barbara County
Date: Monday, December 6, 2021 1:27:35 PM

Caution: This email originated from a source outside of the County of Santa Barbara. Do not click links or open attachments unless you verify the sender and know the content is safe.

Dear Commissioners,

I live in the city of Santa Maria/Santa Barbara County. Thank you for your time and hard work to determine a fair map for our county. I appreciate your service.

I support map 822 with Isla Vista no longer in district 3 as drawn. Your decision will help give voice to our individual communities, not a political party. I believe local government is the best way to insure people have representation outside of the 2 party system. This change will reflect the current demographics; this update is badly needed as the districts have been the same for at least 20 years.

Sincerely,
Evelyn Denice Searcy

From: [Brad V](#)
To: [CEO Redistricting RES](#)
Subject: Redistricting updates
Date: Monday, December 6, 2021 4:33:38 PM

Caution: This email originated from a source outside of the County of Santa Barbara. Do not click links or open attachments unless you verify the sender and know the content is safe.

I would like to be signed up for updates and information about the County Supervisorial Redistricting process

Brad Vidro

From: [David Pera](#)
To: [CEO Redistricting RES](#)
Subject: Redistricting Maps
Date: Monday, December 6, 2021 4:46:15 PM

Caution: This email originated from a source outside of the County of Santa Barbara. Do not click links or open attachments unless you verify the sender and know the content is safe.

Commissioners,

I want to support maps #804,404,103 &106 to be considered for final adoption.

I'd like cities to be kept as whole as possible and do not want Isla Vista and UCSB placed into a North County District.

Sincerely,
David Pera

From: [Julie Bischoff](#)
To: [CEO Redistricting RES](#)
Subject: Final Preferred Map
Date: Monday, December 6, 2021 8:28:15 PM

Caution: This email originated from a source outside of the County of Santa Barbara. Do not click links or open attachments unless you verify the sender and know the content is safe.

December 6, 2021

Dear Redistricting Commissioners,

Thank you!

You all are to be commended for not only surviving the grueling day last Saturday, December 4, 2021 in the Santa Barbara County Administration Building, but for having pushed through to approve a map that embodies the wishes of the voters who passed Measure G.

The new Final Preferred Map which evolved from Map 822 was a compromise, representing your best efforts and which is something that the voters have been wanting for a very long time.

Watching how the numbers changed when neighborhoods were moved around, gave us in the audience a much better understanding of the difficulty of your job. Regardless, you pressed on and did your jobs, and the result works.

Finally, Lompoc and the Santa Ynez Valley are together in a district that makes sense, and UCSB and IV will be voting with the areas where they live, work and go to school.

Thank you again.

Julie Bischoff

Santa Barbara – Turnpike Area

From: [Franziska Shepard](#)
To: [CEO Redistricting RES](#)
Subject: Adopt Preferred Map without Modification
Date: Tuesday, December 7, 2021 12:16:51 PM

Caution: This email originated from a source outside of the County of Santa Barbara. Do not click links or open attachments unless you verify the sender and know the content is safe.

Chair Morris and Commissioners:

I am writing to urge you to adopt the Preferred District Map 822 which you approved by an 11-0 vote during your December 4th meeting.

That map is an excellent example of cooperation and collaboration which will result in improved representation and government for our County.

Again, I urge you to adopt it as-is, without further modification.

Sincerely,

Franziska Shepard
1418 E Main St. Ste 130
Santa Maria, Ca. 93454
805-614-7591 Office
805-614-7592 Fax
805-878-2775 Cell
franzi93454@yahoo.com

From: [Brett Filippin](#)
To: [CEO Redistricting RES](#)
Subject: I support the Finalized Preferred Map
Date: Tuesday, December 7, 2021 1:37:29 PM

Caution: This email originated from a source outside of the County of Santa Barbara. Do not click links or open attachments unless you verify the sender and know the content is safe.

Hi,

I am a 10th generation resident of Northern Santa Barbara County. My family came to the region in 1765 and has permanently resided in the Santa Ynez Valley since 1804. I want to say I am very happy with the finalized preferred map. For the first time in my life, I feel as though the Santa Ynez Valley will have a consequential voice in its government.

It appeared to me that map 822 had the votes on 12/4 to go through, but you the commissioners still made adjustments that allowed all voices to be heard and for a map to pass unanimously. Coming from 2 Oaxacan families, I am very pleased that we have 3 Latino districts in the county for the first time in decades.

I believe this map will prove to be the fairest - within the legal parameters - and that the CIRC was a success. I want to personally thank commissioners Megan Turley and Kevin Kaseff, I felt they represented the Santa Ynez Valley very well.

Thank you for all of your time and consideration,

Brett

From: [Chris Curiel](#)
To: [CEO Redistricting RES](#)
Subject: Support D5 Amendment
Date: Tuesday, December 7, 2021 4:05:06 PM

Caution: This email originated from a source outside of the County of Santa Barbara. Do not click links or open attachments unless you verify the sender and know the content is safe.

Good afternoon, Redistricting Commissioners - I'm a resident of SBC and live in Santa Maria. I'm very interested in your final meeting on Wednesday. I've reviewed the final proposed district map, which largely looks good. But I would suggest that you make a minor adjustment to the fifth district to include the communities west of Hwy 101. Being familiar with the Santa Maria area, the 101 is a clear and natural boundary dividing line between District 4 and 5. This would be a minor change that your Commission could make tomorrow (Wednesday). Thank you for your consideration.

Best,

Chris Curiel

From: [Justin Kiel](#)
To: [CEO Redistricting RES](#)
Subject: Support D5 Ammendment
Date: Tuesday, December 7, 2021 4:25:30 PM

Caution: This email originated from a source outside of the County of Santa Barbara. Do not click links or open attachments unless you verify the sender and know the content is safe.

Honorable Commissioners

My name is Justin Kiel and I've lived in the County of Santa Barbara for over 10 years. I'm raising a family here and am deeply interested in the redistricting process for the County. I support the proposed map on the table, for final adoption, but urge you to make a minor modification to include everything east of the 101 in the 4th district. This dividing line of the 101 makes sense to separate these communities. Thank you for all of your work on behalf of our County.

Best Regards,
Justin Kiel

Sent from my iPad

From: [Margaret L. Hammel](#)
To: [CEO Redistricting RES](#)
Subject: Final Preferred Map 822
Date: Tuesday, December 7, 2021 4:34:48 PM

Caution: This email originated from a source outside of the County of Santa Barbara. Do not click links or open attachments unless you verify the sender and know the content is safe.

Dear Santa Barbara Redistricting Committee,

Thank you for the final preferred map of 822.
This work was done by people such as yourselves, Representing and caring for their neighbors and communities one and all, proving that we can bring ourselves to mutual respect and compromise.
That is a great legacy. We will pay it forward.
Thank you again for the patience and hard work.
This will not be forgotten.
Sincerely,
Miki Hammel

Sent from my iPhone

From: [Christina Kerr](#)
To: [CEO Redistricting RES](#)
Subject: SB County District Map
Date: Tuesday, December 7, 2021 4:40:01 PM

Caution: This email originated from a source outside of the County of Santa Barbara. Do not click links or open attachments unless you verify the sender and know the content is safe.

Thank you all for your ongoing work to select the most accurate districting map for our county. We appreciate that you've listened to the community in selecting a map that reflects fair boundaries.

I live in Buellton and fully support map 822 with IV and UCSB moved out of District 3 boundaries. We really are different communities that warrant different representation. I kindly ask that you please finalize this preferred map.

Regards,
Christina Kerr

From: [Michael English](#)
To: [CEO Redistricting RES](#)
Subject: Goleta, Isla Vista, and Santa Barbara in District 2
Date: Tuesday, December 7, 2021 4:48:48 PM

Caution: This email originated from a source outside of the County of Santa Barbara. Do not click links or open attachments unless you verify the sender and know the content is safe.

Thank you for all the time and effort you have poured into our community by serving on this independent commission. I live in the unincorporated area of Santa Barbara commonly known as “Noleta” and wanted to express my gratitude for the commission choosing to base the final map off Map 822. When I first saw the final map, I failed to notice, however, that there were some odd lines drawn for Goleta. I request correction of those oddities before finalizing the map.

Living in “Noleta,” my neighbors and I all shop at the Camino Real Marketplace, where Costco and Home Depot are located, and Target is just across the street. This is all part of one community. It doesn’t make sense to me that my residence would be in District 3, while the areas we all shop in are in District 2. It would make much more sense to have Goleta – up to Winchester Canyon Road – to be part of District 2, along with Isla Vista. So many that I have discussed this matter with are confused why you felt the need to carve part of Goleta out of District 2 and give it to District 3 in the process.

The California State Law and Measure G requirements that were shown on your “Rules for Drawing the Lines” slide on Saturday indicate that “geographic-contiguity,” “undivided neighborhoods and ‘communities of interest,’” and “undivided cities” are important characteristics to consider for drawing these boundaries. Those characteristics led to the inclusion of Isla Vista in District 2, and they should also lead to the inclusion of Goleta in District 2.

I understand that the Goleta city council was promoting the idea that it is good for Goleta to be in two different districts, but doing so clearly violates the Rules. Goleta isn’t entitled to have two County Supervisors beholden to them, in fact it is just plain wrong. Please finish the good work you have begun by keeping Goleta, Isla Vista and Santa Barbara together in District 2.

Sincerely,

Michael English
534 Tepic Place, Santa Barbara CA 93111

--

— Michael

From: [Nicholle Montalvo](#)
To: [CEO Redistricting RES](#)
Subject: Map 822
Date: Tuesday, December 7, 2021 4:44:33 PM

Caution: This email originated from a source outside of the County of Santa Barbara. Do not click links or open attachments unless you verify the sender and know the content is safe.

Dear Commissioners,

As a life-long resident of Santa Barbara, I want to thank you for considering public input regarding the proposed maps for the upcoming redistricting. I fully support map 822 and appreciate the time and efforts you have put in to make this extremely important decision.

Sincerely,
Nicholle Montalvo

From: [Charles Williams](#)
To: [CEO Redistricting RES](#)
Subject: Document1 Final Preferred Map
Date: Tuesday, December 7, 2021 4:26:44 PM
Attachments: [Document1.docx](#)

Caution: This email originated from a source outside of the County of Santa Barbara. Do not click links or open attachments unless you verify the sender and know the content is safe.

Commissioner s please see attached.

Thanks,

Chuck Williams

From: [Michele WeslanderQuaid](#)
To: [CEO Redistricting RES](#)
Subject: Redistricting: Map 822
Date: Tuesday, December 7, 2021 4:41:24 PM
Attachments: [Letter to Santa Barbara County Redistricting Committee - 7 DEC 2021.pdf](#)

Caution: This email originated from a source outside of the County of Santa Barbara. Do not click links or open attachments unless you verify the sender and know the content is safe.

RE: Santa Barbara County Redistricting

Thank you to the commissioners for the time and effort you have spent on this independent commission.

Please read the attached letter that includes my inputs for your consideration as you deliberate on the final map.

Regards,
Michele R. Weslander Quaid

From: [Barbara Anne](#)
To: [CEO Redistricting RES](#)
Cc: [Barbara Anne](#)
Subject: Thank you Commissioners!
Date: Tuesday, December 7, 2021 4:59:05 PM

Caution: This email originated from a source outside of the County of Santa Barbara. Do not click links or open attachments unless you verify the sender and know the content is safe.

Dear Commissioners,

I am a native Santa Barbara Citizen , and my family has lived in this community for 5 generations. I have been paying attention and have been involved in the public comments for the last several meetings. I applaud you all for being respectful and for selecting the preferred map which moves IV and UCSB back to Goleta.

Thank you for your hard labor over the last year and being committed to the process of selecting a new map that represents our county districts.

Please finalize the preferred map 822 tomorrow night.

Sincerely,

Barbara Batastini

7 December 2021

Hello, Santa Barbara County Redistricting Committee,

Thank you for your time and effort serving on this independent commission.

I was raised in Santa Barbara and spent the first 14 years of my life here. My mom and I moved away in 1983 and I returned with my family in 2016. I reside at the property that originally belonged to my grandparents off Patterson Avenue towards Cathedral Oaks in what is now known as “Noleta” because it is not in the City of Santa Barbara or the City of Goleta.

Voters acknowledged via Measure G that the districts needed to be redrawn in a more logical manner, specifically Districts 2 and 3. Isla Vista is urban and does not belong in District 3, which is primarily rural Santa Ynez Valley. Isla Vista better fits in the more urban District 2. So, we greatly appreciate your 11-0 vote on 6 December in favor of map 822.

As I expressed in my previous letters and public comment at your meetings, my one concern with map 822 is that while it shows Isla Vista as a part of District 2, which is as it should have been all along, it cuts out parts of Goleta and puts it with District 3, which doesn’t make sense. This is why I stated at your meeting – virtually on 1 December and in person on 4 December – that I support map 822 with the modification to keep Goleta with Santa Barbara where it belongs.

Living in “Noleta,” I shop in the areas of Goleta that you have carved out of District 2 and put in District 3, and so do the residents of Isla Vista. For example, we all go to the Camino Real Marketplace, where COSTCO and Home Depot are located, and Target is just across the street. This is all part of one community. To me and my neighbors, Goleta – up to Winchester Canyon Road – belongs in District 2. While we are glad to finally have Isla Vista in District 2 where it belongs, we don’t understand why you felt the need to carve part of Goleta out of District 2 and give it to District 3 in the process.

Furthermore, by carving out portions of Goleta from District 2 to put in District 3, you appear to have violated some of the California State Law and Measure G requirements that were shown on your “Rules for Drawing the Lines” slide on Saturday. Specifically, “geographic-contiguity,” “undivided neighborhoods and ‘communities of interest,’” and “undivided cities.” To that end, my husband – who works at Karl Storz in that area that has been carved out – and I cannot comprehend why the Goleta city council would lobby so hard for Goleta to be in two different districts, as Goleta isn’t entitled to have two County Supervisors beholden to them, and doing so would violate the Rules. We believe the boundary of District 2 should extend to Winchester Canyon Road to include Goleta as part of our community because, in reality, it is.

Thank you for your time and consideration.

Regards,

M. Weslander Quaid

Michele R. Weslander Quaid

534 Tepic Place, Santa Barbara CA 93111

Dec.7th2021

Commissioners, please approve the final preferred map. There is no good reason to revisit this issue. This choice will work for everyone much better than the others.

Thank you all for your time spent on the difficult job!

Chuck Williams,

Orcutt

From: [Lizbeth Savage](#)
To: [CEO Redistricting RES](#)
Subject: Map 822
Date: Tuesday, December 7, 2021 5:58:29 PM

Caution: This email originated from a source outside of the County of Santa Barbara. Do not click links or open attachments unless you verify the sender and know the content is safe.

Dear Commisioners,

I am in favor of map 822. I LIVE IN Goleta and I would like UCSB and Isla Vista not to be in district 3. It would be great to finish this up soon. Let's not drag this out forever. Thanks for all your hard work. Its been a crazy year. Lets keep doing the right things for our area.

Lizbeth and William Savage

From: [Laurie Punches](#)
To: [CEO Redistricting RES](#)
Subject: Redistributing Santa Barbara /Goleta
Date: Tuesday, December 7, 2021 6:00:43 PM

Caution: This email originated from a source outside of the County of Santa Barbara. Do not click links or open attachments unless you verify the sender and know the content is safe.

Dear Commissioners ,

Thank you all for your commitment and choosing a fair boundary map. this last year.
I went to Westmont college, city college and UCSB in the 70's and have have made Santa Barbara my home to raise my kids.

I, with many, want an thank you for listening to the community.

I support map 822 with IV and UCSB no longer in district 3 .

Thanks for finalizing the preferred map tomorrow night .

Sincerely ,
Laurie Punches

From: [Peggy Wilson](#)
To: [CEO Redistricting RES](#)
Subject: In Support of voted for and Approved Map 822
Date: Tuesday, December 7, 2021 7:09:33 PM

Caution: This email originated from a source outside of the County of Santa Barbara. Do not click links or open attachments unless you verify the sender and know the content is safe.

Commissioners,

Thank you all for your commitment and hard work on making this a citizen led map redistricting plan for SB County.

I am in support of Map 822 voted on and approved with IV and UCSB no longer in district 3. It meets all requirements cited below and seems to be the most concise map presented.

Meets Federal Law

US Constitution says reasonable and equal populations

No gerrymandering

Voting Rights Act

Meets CA State Law & Measure G

Geographical Contiguity

Communities of interest

Compact

Cohesiveness

Please finalize the preferred map tomorrow night .

Peggy Wilson
Resident of Santa Barbara

From: [Laurie Huarte](#)
To: [CEO Redistricting RES](#)
Subject: 822 Redistricting
Date: Tuesday, December 7, 2021 8:32:43 PM

Caution: This email originated from a source outside of the County of Santa Barbara. Do not click links or open attachments unless you verify the sender and know the content is safe.

Sent from my iPhone
Thank You for voting on 822 Redistricting! Stay strong!
Move forward for the people!
We've put up with this unfair ruling for too long.

From: [Darlene Bayer](#)
To: [CEO Redistricting RES](#)
Subject: District 3 redistricting
Date: Tuesday, December 7, 2021 8:45:01 PM

Caution: This email originated from a source outside of the County of Santa Barbara. Do not click links or open attachments unless you verify the sender and know the content is safe.

Dear Commissioners,

My husband and I live in the city of Solvang, North Santa Barbara county. Thank you for all your time and tremendous hard work in determining a very fair map for our county.

We support map 822 with IV no longer in district 3 as drawn.

With Appreciation,

Darlene Bayer
208 Valhalla Drive
Solvang, CA 93463

From: [Sue Voshell](#)
To: [CEO Redistricting RES](#)
Subject: Redistricting Santa Barbara County
Date: Tuesday, December 7, 2021 9:06:46 PM

Caution: This email originated from a source outside of the County of Santa Barbara. Do not click links or open attachments unless you verify the sender and know the content is safe.

Dear Commissioners,

When considering redistricting Santa Barbara County, it seems intuitive that individual cities should be considered as "stand alone" units. Cities should be kept "in totale" and not have pieces of other geographic locations added to them. When mixing areas, it effectively "dilutes" the the will of the individuals from different areas when this "melding" is done. The will of the people in specific areas should be expressed in their home areas without impact from other places.

Maps numbered 804, 404, 103, and 106 should be seriously considered for final adoption.

Thank you for your attention to this very important issue.

Sincerely,

E. Sue Voshell

From: [D&LWhite](#)
To: [CEO Redistricting RES](#)
Subject: Public Comment on the Redistricting map
Date: Tuesday, December 7, 2021 9:53:06 PM

Caution: This email originated from a source outside of the County of Santa Barbara. Do not click links or open attachments unless you verify the sender and know the content is safe.

Dear Commissioner,

I have been a resident of the Lompoc Valley for over 55 years.

I am pleased that you have not let the City of Lompoc be split, and how the commission recognized the importance of keeping the agricultural areas of Lompoc & Santa Ynez together. We in Lompoc are pleased with the final map and that it received a 11-0 vote from the commissioners was amazing. Thank you all!

We voted in 2018 for this commission and thank you for taking Isla Vista and UCSB out of the Agricultural corridor of Lompoc and Santa Ynez Valley, District 3, and moving them to South County where they are live, work and play. This appears to be well thought out and fair to all. This has been inspiring to see!

Please finalize the preferred map tonight.

Respectfully,

Dallas White


From: [Alejandro Benavides](#)
To: [CEO Redistricting RES](#)
Subject: Support D5 Amendment
Date: Tuesday, December 7, 2021 6:04:24 PM

Caution: This email originated from a source outside of the County of Santa Barbara. Do not click links or open attachments unless you verify the sender and know the content is safe.

Good afternoon Redistricting Commissioners - I'm a resident of SBC and live in 1213 Cobblestone Ln, I'm very interested in your final meeting on Wednesday. I've reviewed the final proposed district map, which largely looks good. But I would suggest that you make a minor adjustment to the boundary between district 4 and 5 and include communities to the east in district 4. Being familiar with the SM area, the 101 is a clear and natural boundary dividing line between District 4 and 5. This would be a minor change that your Commission could make tomorrow (Wednesday). Thank you for your consideration.

Best,

Alex Benavides | General Manager

signature_66177554


1637 W Central Ave
Lompoc, CA 93436

Mobile: [\(661\)578-7075](tel:(661)578-7075)

Email: abenavides@glasshousegroup.com

Web: www.glasshousegroup.com

This message is intended only for the use of the individual or entity to which it is addressed, and might contain information that is PRIVILEGED, CONFIDENTIAL and exempt from disclosure under applicable law. If the reader of this message is not the intended recipient, or the employee or agent responsible for delivering the message to the intended recipient, you are hereby notified that any dissemination, distribution or copying of this communication is strictly prohibited. If you have received this communication in error, please notify sender immediately by telephone, and delete the original without making a copy. Thank you.

Sent from my Verizon, Samsung Galaxy smartphone
Get [Outlook for Android](#)

From: [Jim Bray](#)
To: [CEO Redistricting RES](#)
Subject: Fwd: SB County Redistricting
Date: Wednesday, December 8, 2021 6:56:29 AM

Caution: This email originated from a source outside of the County of Santa Barbara. Do not click links or open attachments unless you verify the sender and know the content is safe.

-----Original Message-----

From: kevingwalters@gmail.com
To: jimdenbray@verizon.net
Sent: Tue, Dec 7, 2021 9:44 pm
Subject: SB County Redistricting

Hello Jim,

I'm writing tonight to some of my friends about tomorrow's meeting (Wednesday, December 8) of the Santa Barbara County redistricting commission. This is the final meeting to adopt the map that will define our county commissioner boundaries for the next decade.

There is a lot of concern (that I share) that the [final draft map](#) splits the city of Santa Maria in a way that is not equitable for the county's largest city. As the map stands now, the core of Santa Maria (including the Town Center Mall, city hall, the library, the Abel Maldonado Center, and the surrounding neighborhoods) are included in a district that includes not only Orcutt, but also Vandenberg Village, , Mission Hills, Los Alamos and Sisquoc.

You can attend the meeting on Zoom tomorrow and comment about the final map by following the instructions on the [posted agenda](#). The agenda says that written public comment should have been received by 5 PM today, but you can still send comments to redistricting@countyofsb.org. Hopefully the commission will recognize the importance of hearing from the community - particularly given that the short time frame between the meeting on Saturday to get to a "final draft" and the next meeting to finalize that choice.

Thanks for taking a minute to read this. I hope your holiday season is awesome!



From: [Jim Bray](#)
To: [CEO Redistricting RES](#)
Subject: Fwd: SB County Redistricting
Date: Wednesday, December 8, 2021 6:56:55 AM

Caution: This email originated from a source outside of the County of Santa Barbara. Do not click links or open attachments unless you verify the sender and know the content is safe.

-----Original Message-----

From: Kate Ferguson <just_kate@live.com>
To: Jim Bray <jimdenbray@verizon.net>
Sent: Tue, Dec 7, 2021 10:04 pm
Subject: Fwd: SB County Redistricting

Did he send this to you? Would he rather have isla vista in our district?

Guess I shouldn't comment, I haven't seen any of the maps.

Get [Outlook for Android](#)

From: kevingwalters@gmail.com <kevingwalters@gmail.com>
Sent: Tuesday, December 7, 2021 9:45:00 PM
To: just_kate@live.com <just_kate@live.com>
Subject: SB County Redistricting

Hello Kate,

I'm writing tonight to some of my friends about tomorrow's meeting (Wednesday, December 8) of the Santa Barbara County redistricting commission. This is the final meeting to adopt the map that will define our county commissioner boundaries for the next decade.

There is a lot of concern (that I share) that the [final draft map](#) splits the city of Santa Maria in a way that is not equitable for the county's largest city. As the map stands now, the core of Santa Maria (including the Town Center Mall, city hall, the library, the Abel Maldonado Center, and the surrounding neighborhoods) are included in a district that includes not only Orcutt, but also Vandenberg Village, , Mission Hills, Los Alamos and Sisquoc.

You can attend the meeting on Zoom tomorrow and comment about the final map by following the instructions on the [posted agenda](#). The agenda says that written public comment should have been received by 5 PM today, but you can still send comments to redistricting@countyofsb.org. Hopefully the commission will recognize the importance of hearing from the community - particularly given that the short time frame between the meeting on Saturday to get to a "final draft" and the next meeting to finalize that choice.

Thanks for taking a minute to read this. I hope your holiday season is awesome!

